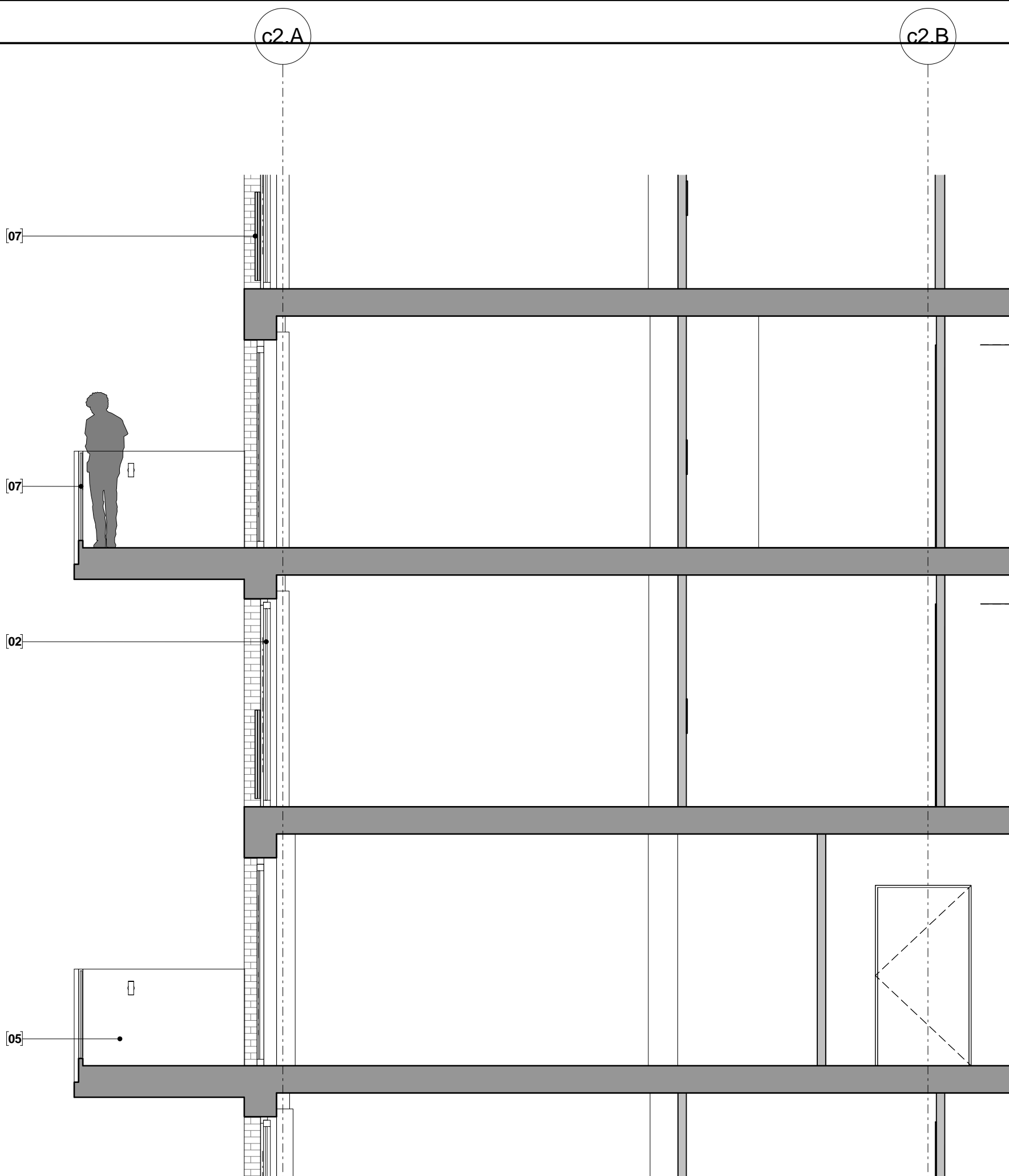
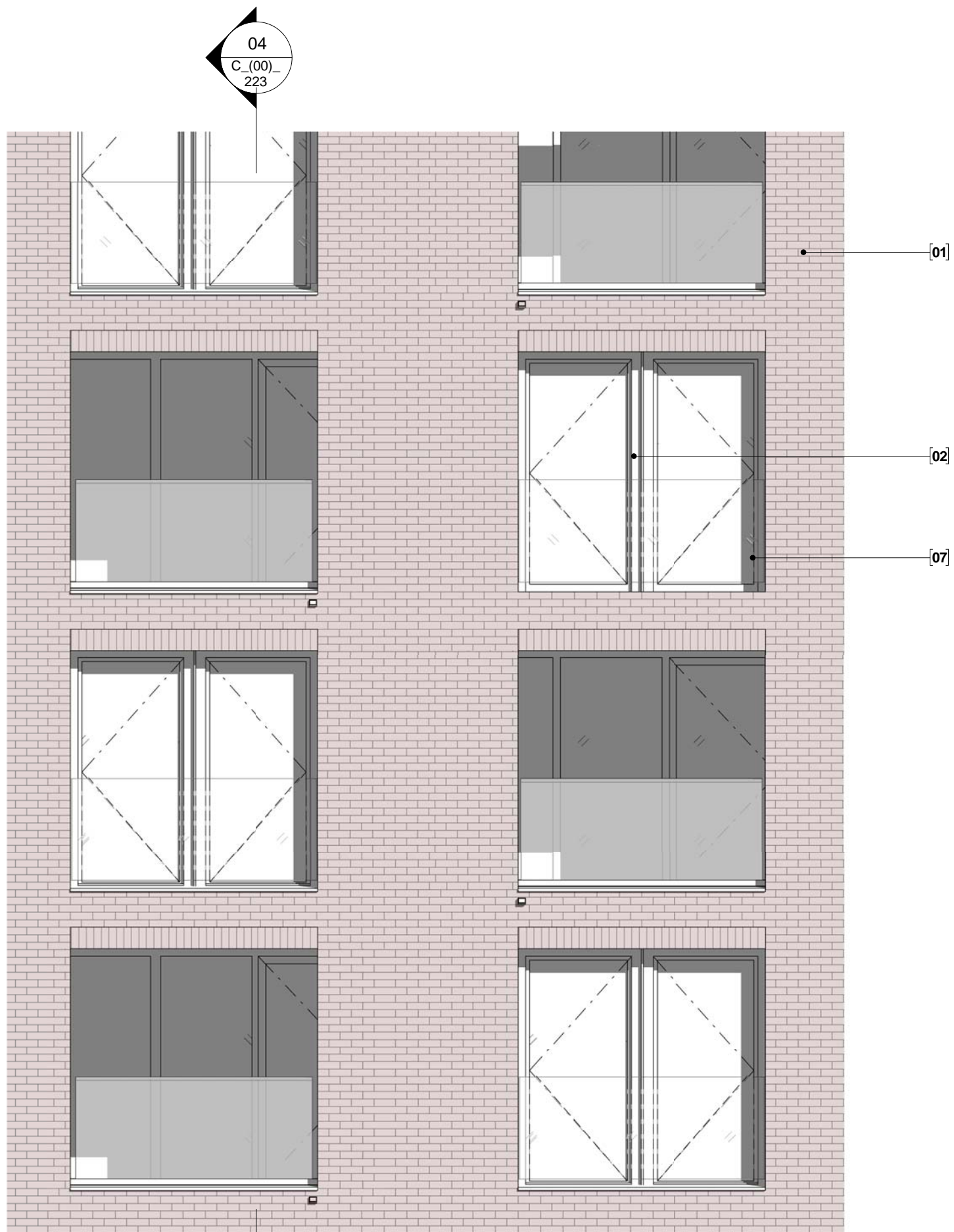


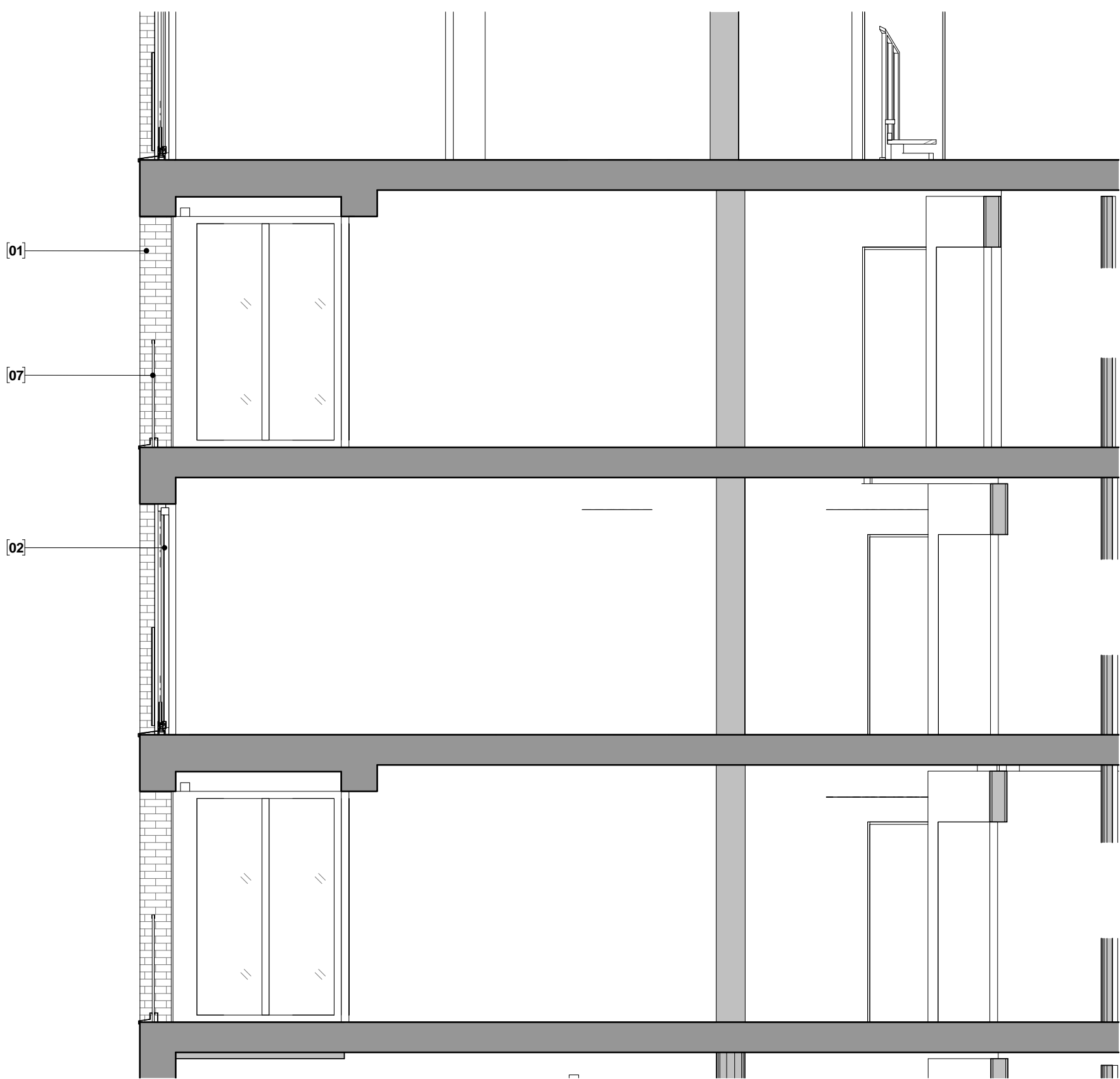
01 BUILDING C2_ EXTERNAL BALCONY TYPICAL BAY ELEVATION



02 BUILDING C2_ EXTERNAL BALCONY TYPICAL BAY SECTION



03 BUILDING C2_ RECESSED BALCONY TYPICAL BAY ELEVATION



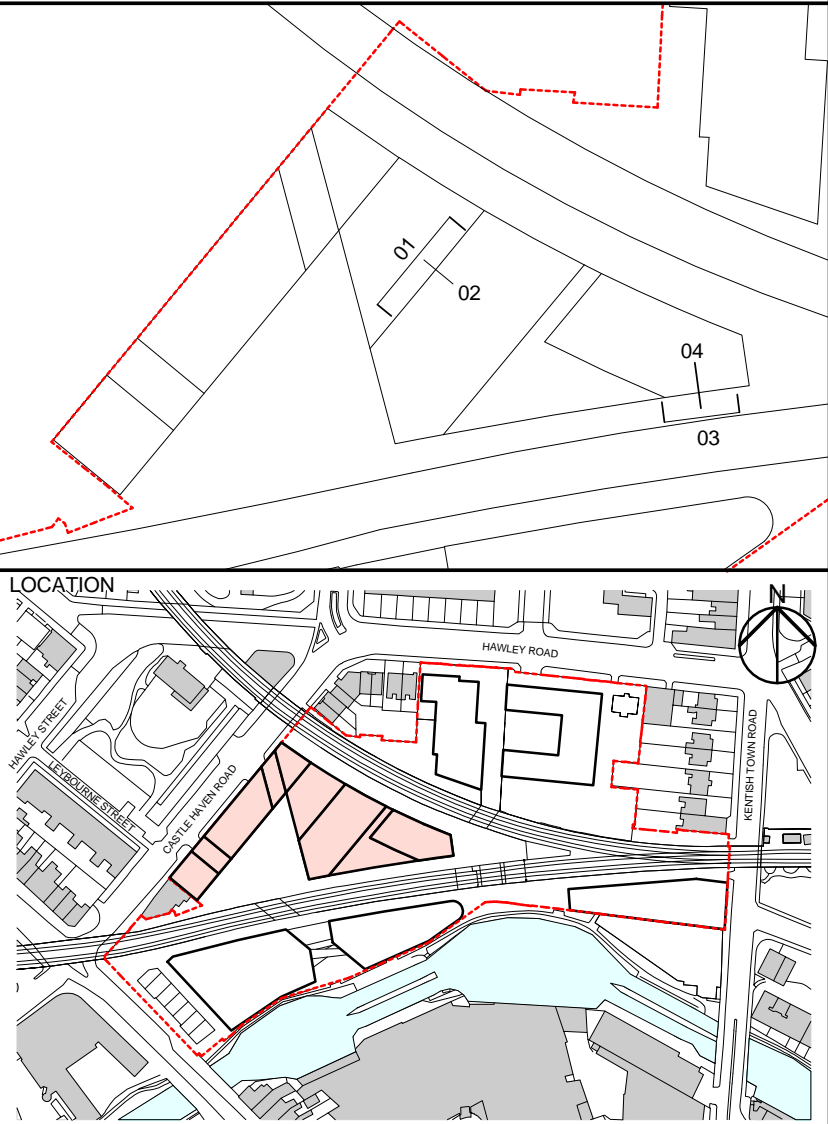
04 BUILDING C2_ RECESSED BALCONY TYPICAL BAY SECTION

- KEY
- 01 BRICK
 - 02 METAL FRAMED WINDOW SYSTEM
 - 03 METAL FRAMED DOOR SYSTEM
 - 04 CURTAIN WALLING GLAZING SYSTEM
 - 05 GRC PANEL
 - 06 LIFT OVERUN
 - 07 GLASS BALUSTRADE
 - 09 METAL LOUVRE PANEL
 - 10 METAL PERFORATED DOOR
 - 11 METAL PERFORATED PANEL
 - 12 METAL PANEL

Rev A 09/02/18 Regularisation Planning Submission
REV DATE DESCRIPTION

CONSULTANTS	
CLIENT:	Stanley Sidings
CONTRACTOR:	Mace
STRUCTURAL ENGINEER:	Walsh Group
MEP ENGINEER:	Aecom
COST CONSULTANT:	Gardiner & Theobald
PROJECT MANAGER:	Gardiner & Theobald
ACOUSTIC CONSULTANT:	Hoare Lea
TRANSPORT CONSULTANT:	Arup
PLANNING CONSULTANT:	Gerald Eve
LANDSCAPE ARCHITECT:	Fabrik
CDM CO-ORDINATOR:	Gardiner & Theobald

- NOTE
1. Do not scale from this drawing.
 2. All dimensions to be checked on site by the contractor and such dimensions to be his responsibility.
Report all drawing errors, omissions and discrepancies to the architect.
 3. This document may be issued in an uncontrolled CAD format to enable others to use it as background information to make alterations and/or additions. In that instance the file will be accompanied by a PDF version. It is for those making such alterations and additions to ensure that they make use of current background information.
 4. AHMM Ltd accepts no liability for any such alterations or additions to the background information or arising out of changes to background information which occur prior to alterations or additions being made.



ALFORD HALL MONAGHAN MORRIS
ARCHITECTS Ltd
6-23 OLD STREET, LONDON, EC1V 9HL
TEL 020 7251 5261 FAX 020 7251 5123 WEB WWW.AHMM.CO.UK

job title
CAMDEN LOCK VILLAGE

drawing title / location
BUILDING C2 PROPOSED BAY STUDY 04

drawn by ABL	checked KH	scale 1 : 50 @ A1	status PLANNING
project 12001	drawing no. C_(00)_ 223	revision A	