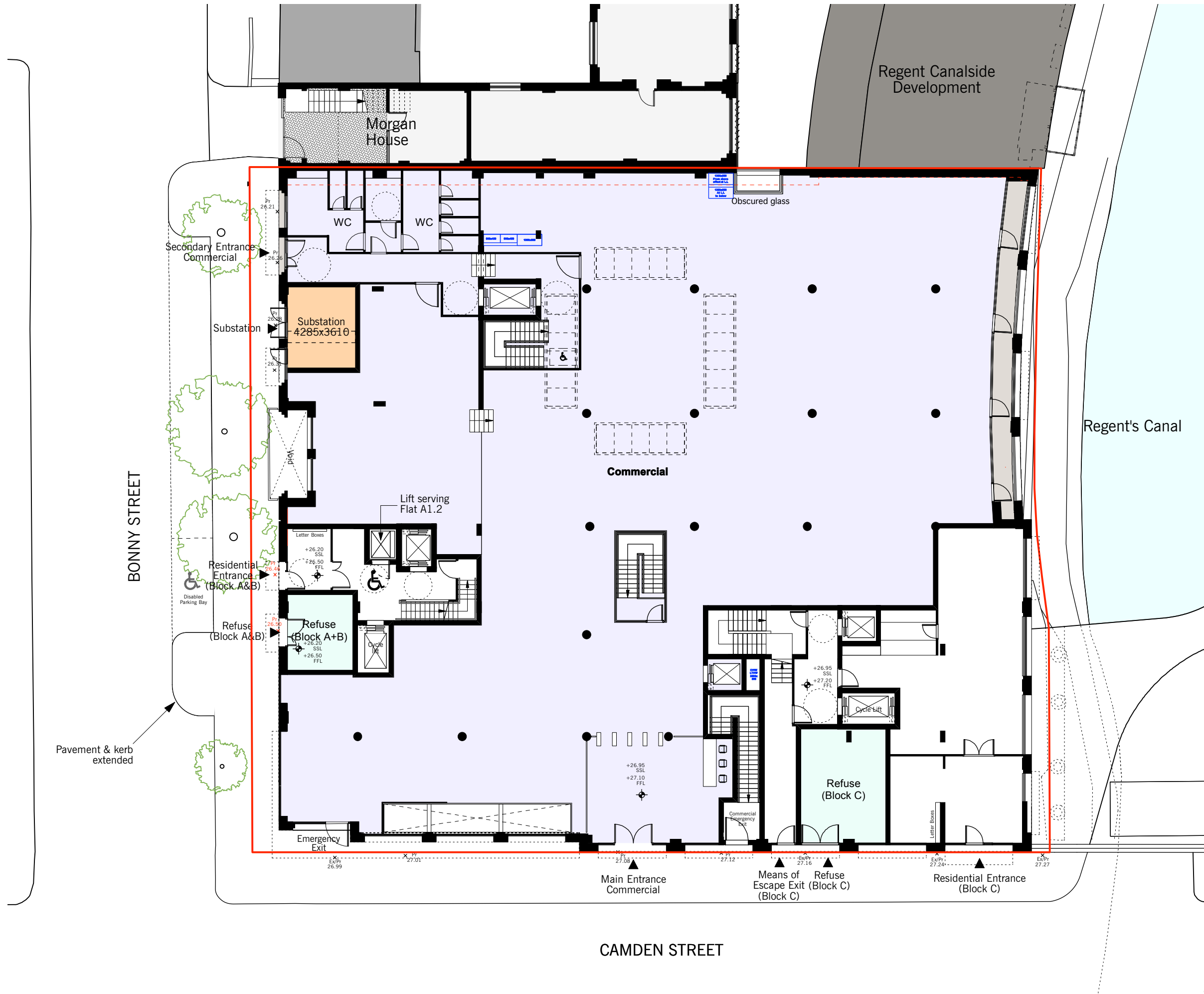


S73-1 Planning Approved Drawings Ref: 2019/3403/P



Residential Areas S73-1

- Private Residential
- Intermediate Housing
- Social Rented

Commercial & Communal Area

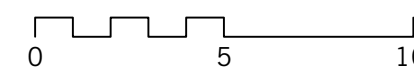
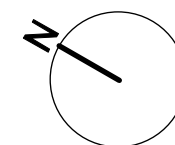
- Commercial Area
- Communal Areas
- Sub Station

- Site Boundary
- Red Line Boundary

Rev.J 18/06/2019: (WITHDRAWN)

- Rev.K 20/06/2019:
- 1.RESIDENTIAL:
 - R.1) Lift serving Block A omitted
 - R.2) Block A cycle store repositioned to lower ground floor.
 - R.3) Block C cycle store and cycle lift repositioned, staircase amended.
 - R.4) Wheelchair unit repositioned to first floor, lift serving wheelchair unit indicated
 - R.5) Block C entrance repositioned, entrance hall amended, staircase amended, refuse store repositioned.
 - 2.COMMERCIAL:
 - C.1) Staircases repositioned, passenger lift added, general revision to accord with the amendments to staircases.
 - C.2) Floor voids omitted.

- Rev.L 01/08/2019:
- 1.RESIDENTIAL:
 - R.1) Entrance/means of escape doors revised.
 - 2.COMMERCIAL:
 - C.1) Emergency exit doors and secondary entrance door revised.



S73-1 MINOR MATERIAL AMENDMENTS APPROVED REF:2019/3403/P

Residential Areas

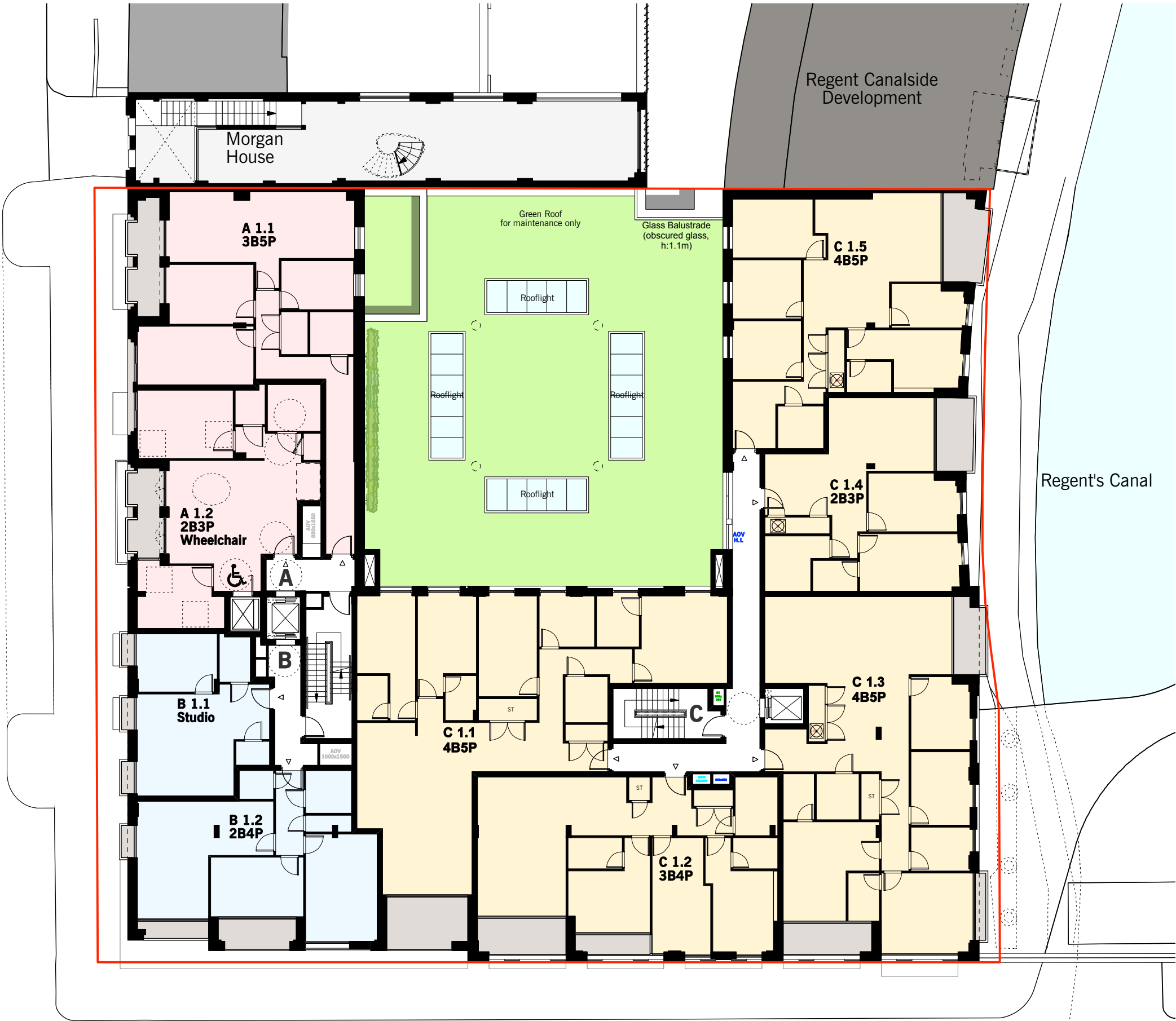
- Private Residential
- Intermediate Housing
- Social Rented

Commercial & Communal Area

- Commercial Area
- Communal Areas
- Site Boundary
- Red Line Boundary

Rev.H 18/06/2019: (WITHDRAWN)

Rev.J 20/06/2019:
1.RESIDENTIAL:
R.1) Lift serving Block A omitted
R.4) Wheelchair unit repositioned to first floor, lift serving wheelchair unit indicated
R.6) Mix of flats in Block A,B & C amended
2.COMMERCIAL:
C.3) Roof lights added to roof above commercial area



S73-1 MINOR MATERIAL AMENDMENTS APPROVED REF:2019/3403/P

Residential Areas

- Private Residential
- Intermediate Housing
- Social Rented

Commercial & Communal Area

- Commercial Area
- Communal Areas

Rev.G 14/05/2019:
1.RESIDENTIAL:
R.1) Core B lift and staircase repositioned,
Core of Block A and B combined.
R.6) General amendments to the internal
layout in Block A&B to suit the amendments
to the cores.
R.9) Services risers indicated.

Rev.H 18/06/2019: (WITHDRAWN)

Rev.J 20/06/2019:
1.RESIDENTIAL:
R.1) Lift serving Block A omitted
R.6) Mix of flats in Block A,B & C amended
R.7) Residents' garden room and gym
indicated



S73-1 MINOR MATERIAL AMENDMENTS APPROVED REF:2019/3403/P



Residential Areas S73-1

- Private Residential
- Intermediate Housing
- Social Rented

Commercial & Communal Area

- Commercial Area
- Communal Areas

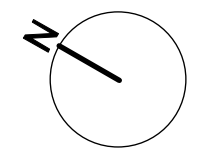
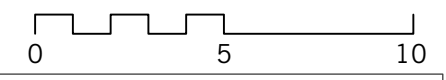
Rev.G 14/05/2019:
1.RESIDENTIAL:
R.6) General amendments to the internal layout in Block B&C to suit the amendments to the cores.
R.10) Core B lift and staircase omitted on the fourth floor, access to Flats B4.1 and B4.2 via Core C
R.11) Lift overrun over Core A roof indicated, roof access hatch repositioned

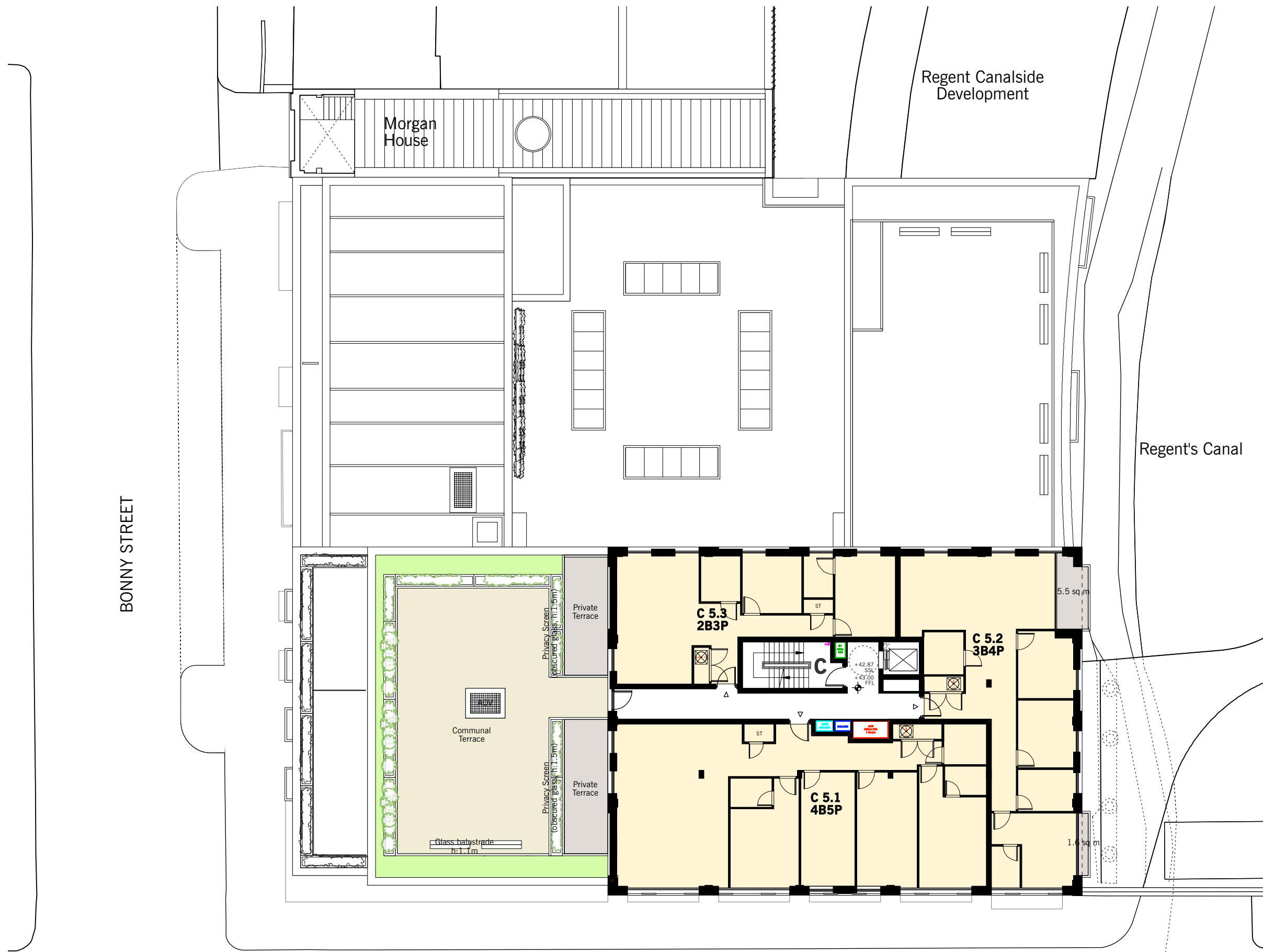
Rev.H 18/06/2019: (WITHDRAWN)

Rev.J 20/06/2019:
1.RESIDENTIAL:
R.6 Mix of flats in Block C amended
R.8) AOV on the roof above the third floor of Block A indicated, lift overrun not required and omitted, roof access hatch repositioned

CAMDEN STREET

S73-1 MINOR MATERIAL AMENDMENTS APPROVED REF:2019/3403/P





Residential Areas S73-1

- Private Residential
- Intermediate Housing
- Social Rented

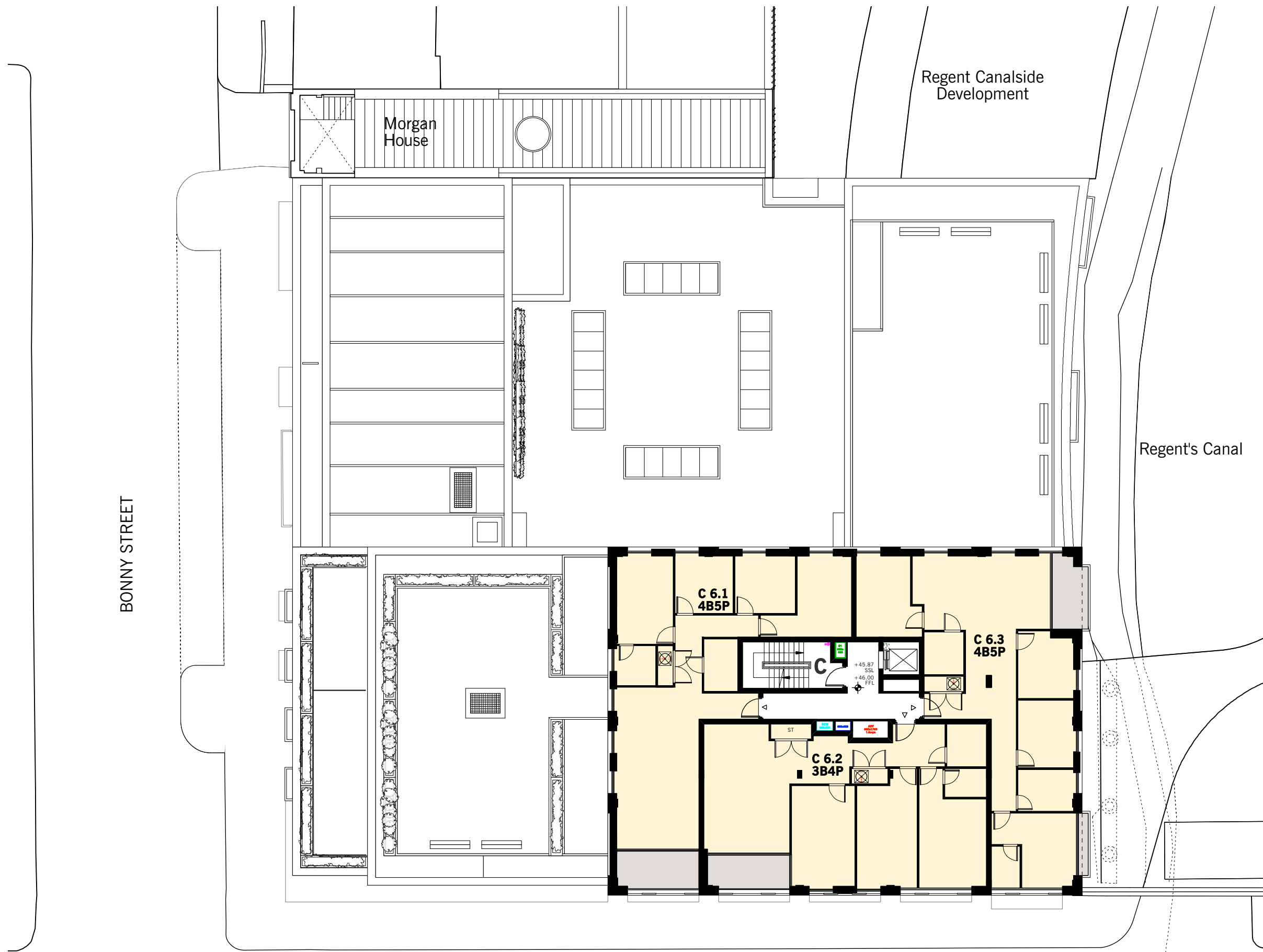
Commercial & Communal Area

- Commercial Area
- Communal Areas

Rev.G 14/05/2019:
1.RESIDENTIAL:
R.12) Stair access to Block B roof omitted, lift overrun not required and omitted, AOV repositioned.
R.13) Block B roof layout revised, communal terrace changed to private terrace.

Rev.H 18/06/2019: (WITHDRAWN)

Rev.J 20/06/2019:
1.RESIDENTIAL:
R.6) Mix of flats in Block C amended
R.9) Part of the private terrace on the roof above the fourth floor of Block B converted to communal terrace.



Residential Areas S73-1

- Private Residential
- Intermediate Housing
- Social Rented

Commercial & Communal Area

- Commercial Area
- Communal Areas

Rev.F 27/11/2017:

1.RESIDENTIAL:
Roofs updated

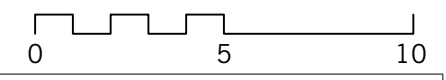
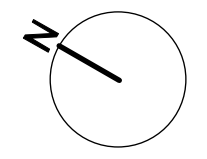
Rev.G 14/05/2019:

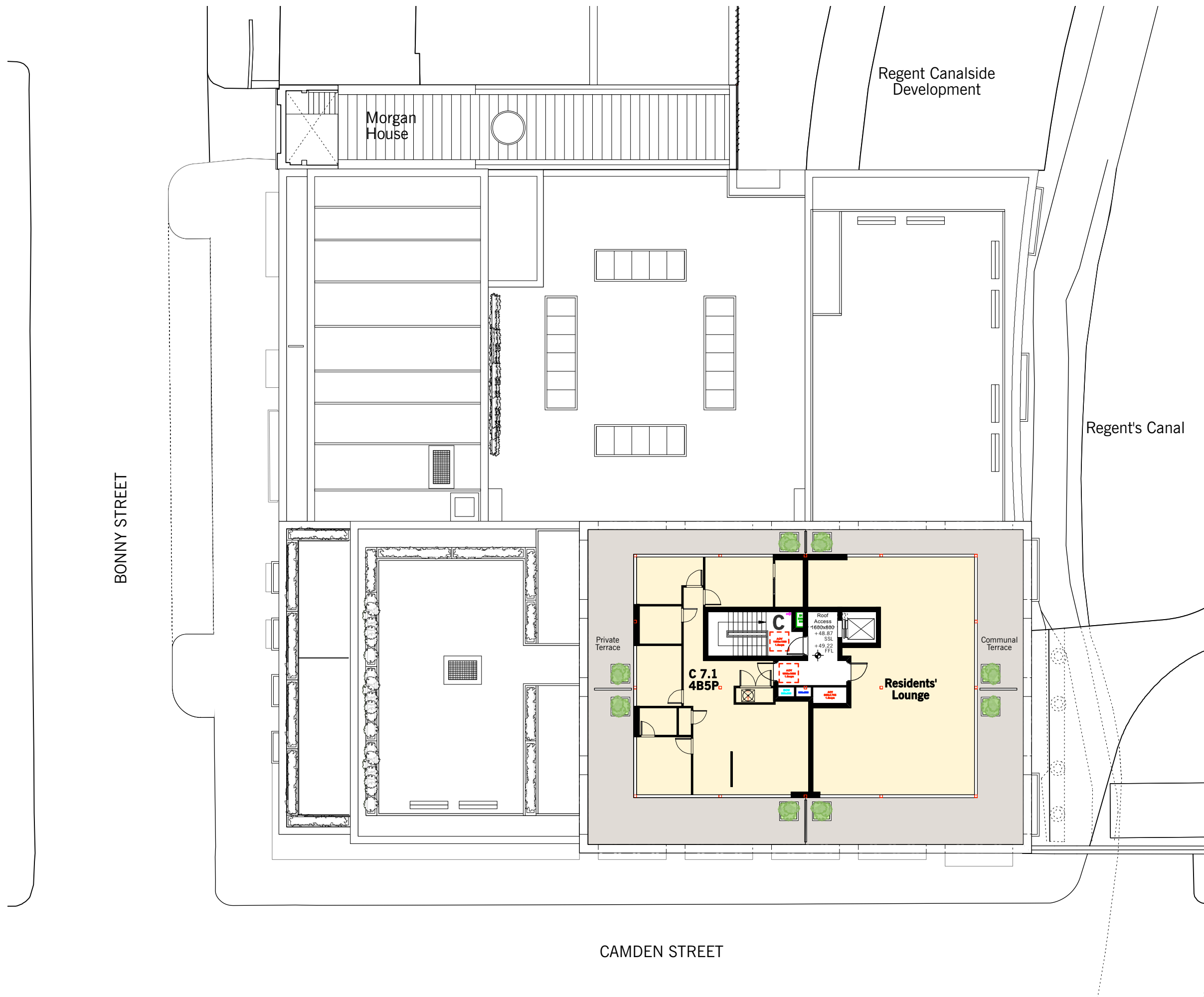
1.RESIDENTIAL:
Roofs updated

Rev.H 18/06/2019: (WITHDRAWN)

Rev.J 20/06/2019:

1.RESIDENTIAL:
R.6) Mix of flats in Block C amended





Residential Areas S73-1

- Private Residential
- Intermediate Housing
- Social Rented

Commercial & Communal Area

- Commercial Area
- Communal Areas

Rev.F 27/11/2017:

1.RESIDENTIAL:
Roofs updated

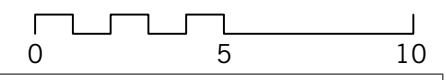
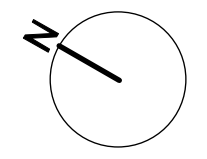
Rev.G 14/05/2019:

1.RESIDENTIAL:
Roofs updated

Rev.H 18/06/2019: (WITHDRAWN)

Rev.J 20/06/2019:

1.RESIDENTIAL:
R.6) Mix of flats in Block C amended
R.10) Residents' lounge indicated.
R.11) Part of private terrace converted to communal terrace



S73-1 MINOR MATERIAL AMENDMENTS APPROVED REF:2019/3403/P

Rev.G 14/05/2019:

1.RESIDENTIAL:

- R.7) Lightwell to rear of Resi Unit A1.1 enlarged
 R.8) Private terraces on the roof above ground floor commercial area omitted.
 R.9) Services risers indicated.
 R.11) Lift overrun over Core A roof indicated, roof access hatch repositioned
 R.12) Stair access to Block B roof omitted, lift overrun omitted, AOV repositioned.
 R.13) Block B roof layout revised, communal terrace changed to private terrace.

2. COMMERCIAL

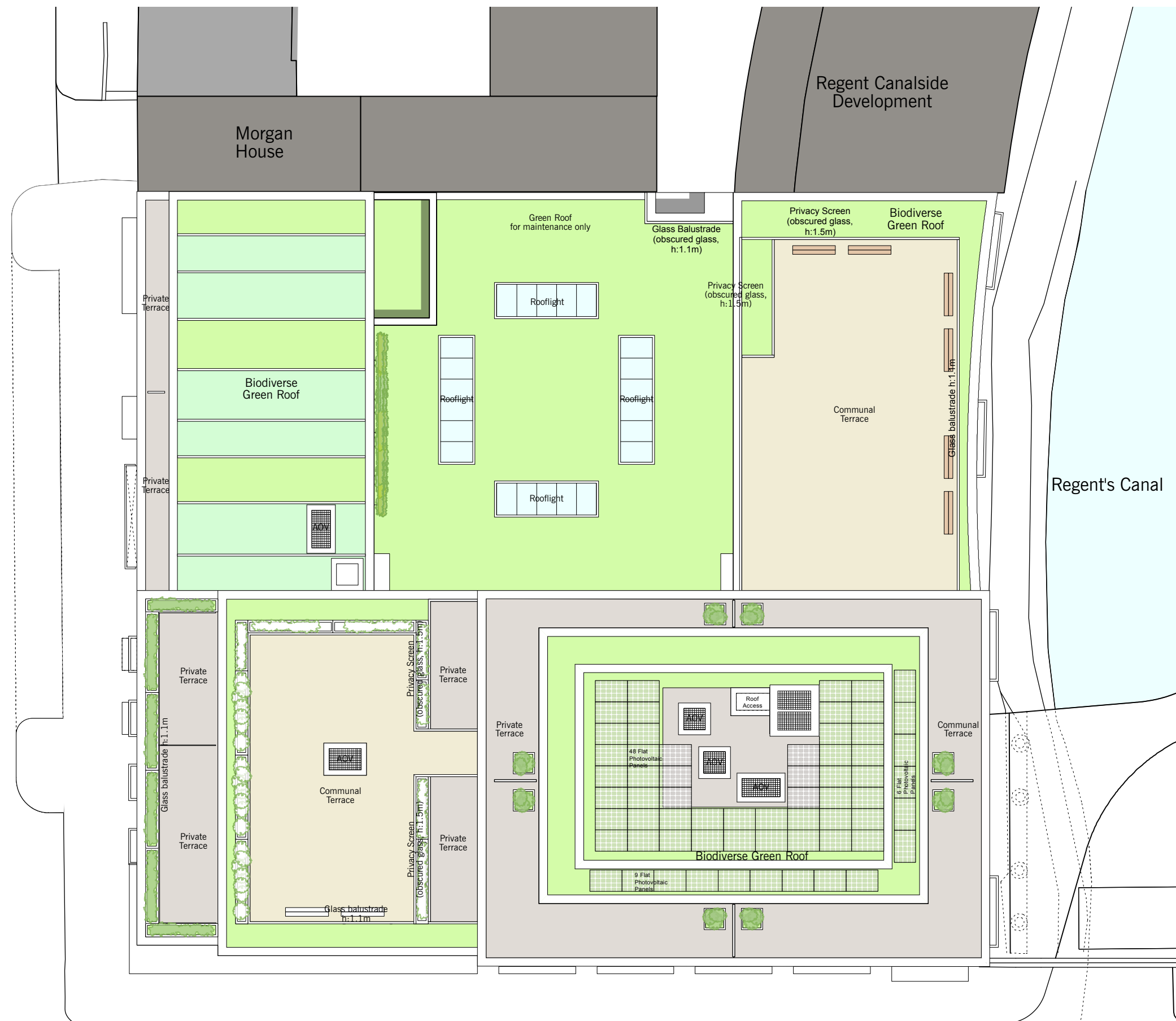
- C.2) Rooflight design revised.
 C.3) Roof above ground floor commercial area revised.

Rev.H 18/06/2019: (WITHDRAWN)**Rev.J 20/06/2019:**

1.RESIDENTIAL:

- R.8) AOV on the roof above the third floor of Block A indicated, lift overrun not required and omitted, roof access hatch repositioned
 R.9) Part of the private terrace on the roof above the fourth floor of Block B converted to communal terrace.
 R.11) Part of the private terrace to the roof above the sixth floor of Block C converted to communal terrace.
 R.12) AOVs on the roof above the seventh floor of Block C indicated, arrangement of PV panels revised.
 2.COMMERCIAL:
 C.3) Roof lights added to the roof above ground floor commercial area

BONNY STREET



CAMDEN STREET

S73-1 MINOR MATERIAL AMENDMENTS APPROVED REF:2019/3403/P