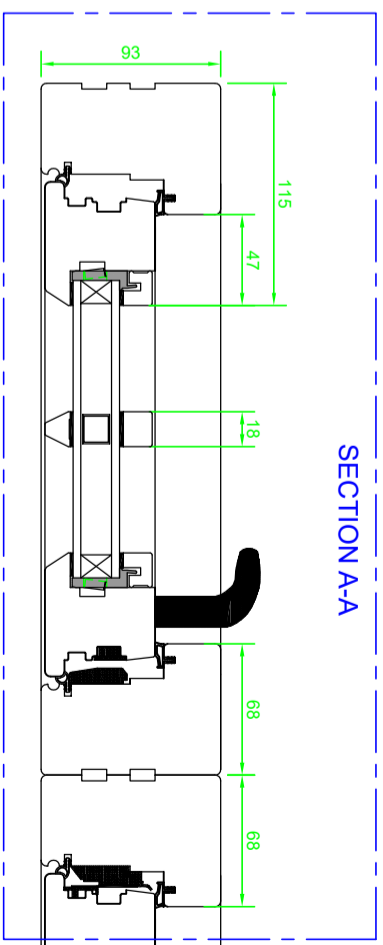
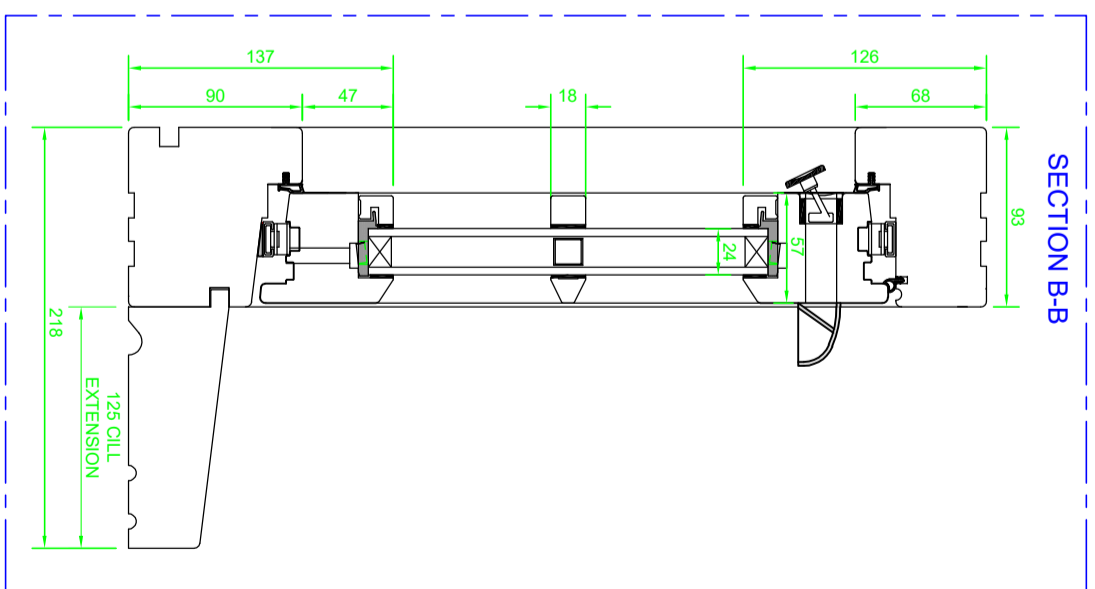


WINDOWS
 29 / 32 / 36 / 37 / 39 / 42 / 44 / 45 /
 47 / 51 / 52 / 56



PRODUCTION		CUSTOMER		PRJ - no.		17091077		REVISIONS		Description	
Approved by		Drawing no.	03	rev	by	Date					
Sign		Date	09/05/2019	A	DF	23/01/20					G/BAR AMENDED TO 18mm
Date		Drw	MB	Scale	1:16/1:4						
Title WINDOWS 29/32/36/37/39/42/44/45/47/51/52/56 ELEVATION & SECTIONS											
PROJECT BUILDING & CONSULTANCY											
13 TAVISTOCK PLACE, LONDON											



Mumford & Wood Limited,
 Tower Business Park, Kelvedon Road,
 Tiptree, Essex CO5 0LX
 Tel: (01621) 818155 Fax: (01621) 818175
 Web: www.mumfordwood.com