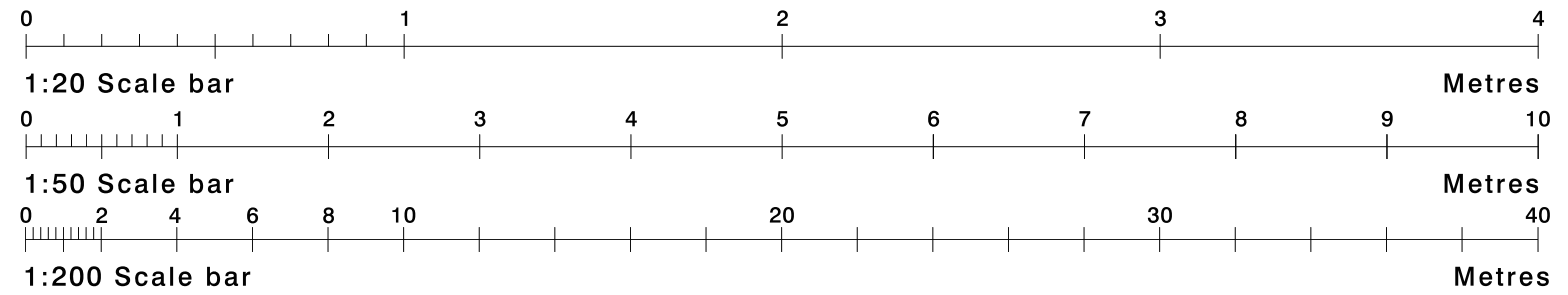


101256A-MOR-CAMDEN-ChalkFarmRdElevation

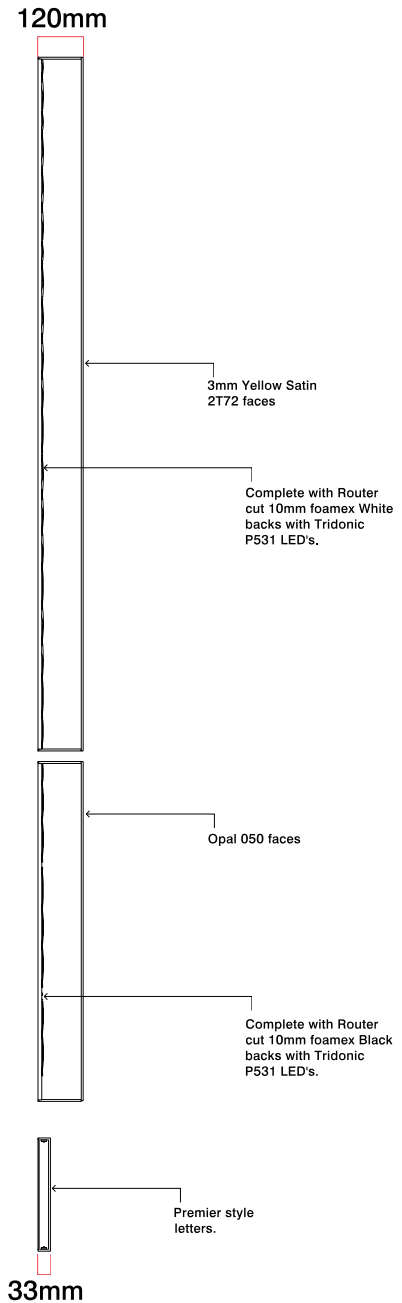
Sign 1 (Sign Ref: S1CFRE) - Scale 1:50  
 900mm Cap Height Morrisons Letters with Core logo

Height from ground level to underside of sign - 3800mm

Luminance - >600cd/m<sup>2</sup>

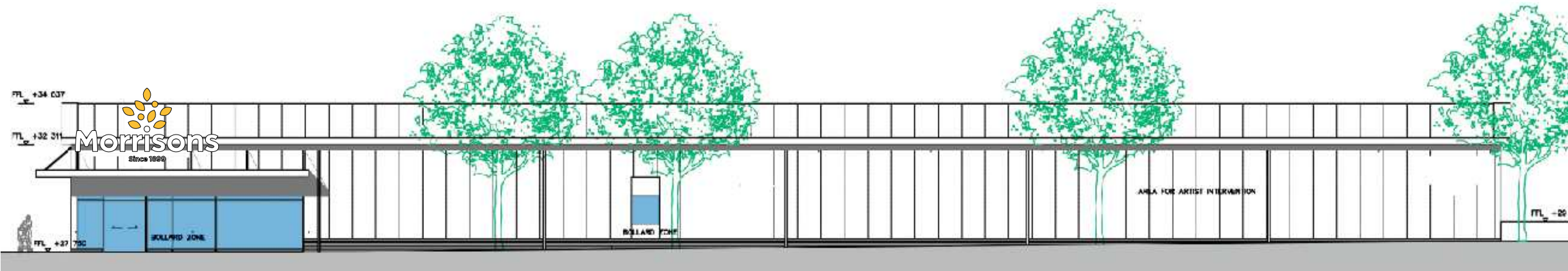


Section through - Scale 1:20



Proposed Signage

Chalk Farm Road Elevation - Scale 1:200



Site  
 Morrisons  
 Camden

Page 1  
 Sign 1  
 Sign Ref  
 (S1CFRE)

Job Number  
 101256A-MOR-CAMDEN-ChalkFarmRd  
 Elevation  
 Drawing Location  
 U:\2020\2020 Drawings\Morrisons

Scale  
 1:20, 1:50, 1:200  
 @ A3  
 Issue / Rev  
 4

Drawn By  
 BF

Checked By  
 PM

Sales Rep  
 GS

Date  
 24/01/2020



BUTTERFIELD SIGNS LTD  
 174 Sunbridge Rd  
 Bradford  
 West Yorkshire  
 BD1 2RZ  
 Tel: 01274 722244  
 Fax: 01274 848996  
 Web: www.butterfieldsigns.co.uk