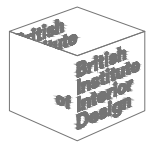
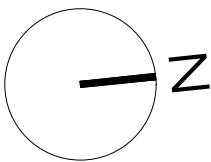
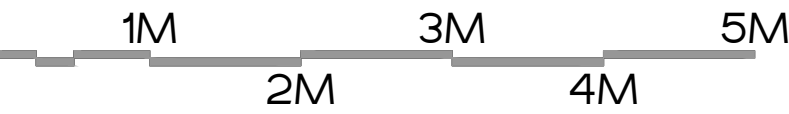


PROPOSED GROUND FLOOR

**DISCLAIMER**  
THIS DRAWING IS THE COPYRIGHT OF RIGBY & RIGBY. DO NOT SCALE. ALL DIMENSIONS TO BE CHECKED ON SITE. PLEASE REFER TO [WWW.RIGBYANDRIGBY.COM/LEGAL](http://WWW.RIGBYANDRIGBY.COM/LEGAL) FOR ALL TERMS & CONDITIONS.



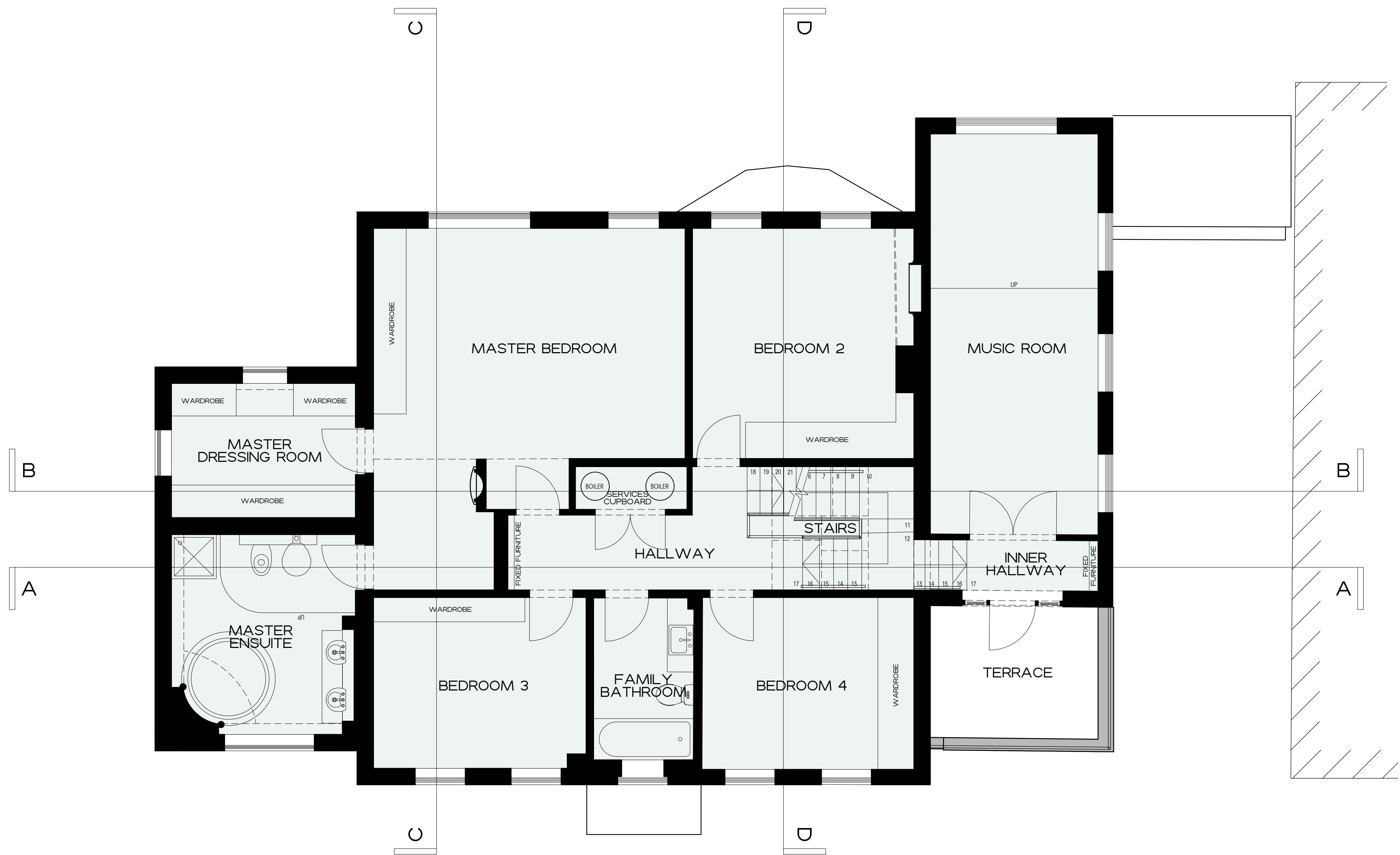
REVISIONS		
A	17.01.20	Updated with revised scheme
B	22.01.20	Updated with comments
C	23.01.20	Updated with comments



7 ST JOHNS WOOD PARK  
CAMDEN  
PROPOSED GROUND  
FLOOR PLAN  
187\_270 REV C  
1:50 @ A1, 1:100 @ A3  
PRELIMINARY



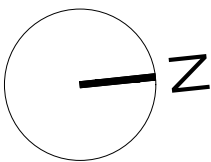
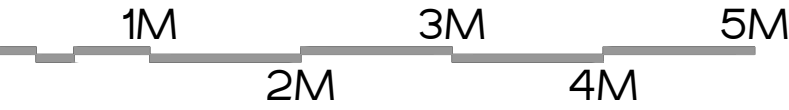
+44 (0)20 3418 0446  
[RIGBYANDRIGBY.COM](http://RIGBYANDRIGBY.COM)



PROPOSED FIRST FLOOR

**DISCLAIMER**  
THIS DRAWING IS THE COPYRIGHT OF RIGBY & RIGBY. DO NOT SCALE. ALL DIMENSIONS TO BE CHECKED ON SITE. PLEASE REFER TO [WWW.RIGBYANDRIGBY.COM/LEGAL](http://WWW.RIGBYANDRIGBY.COM/LEGAL) FOR ALL TERMS & CONDITIONS.

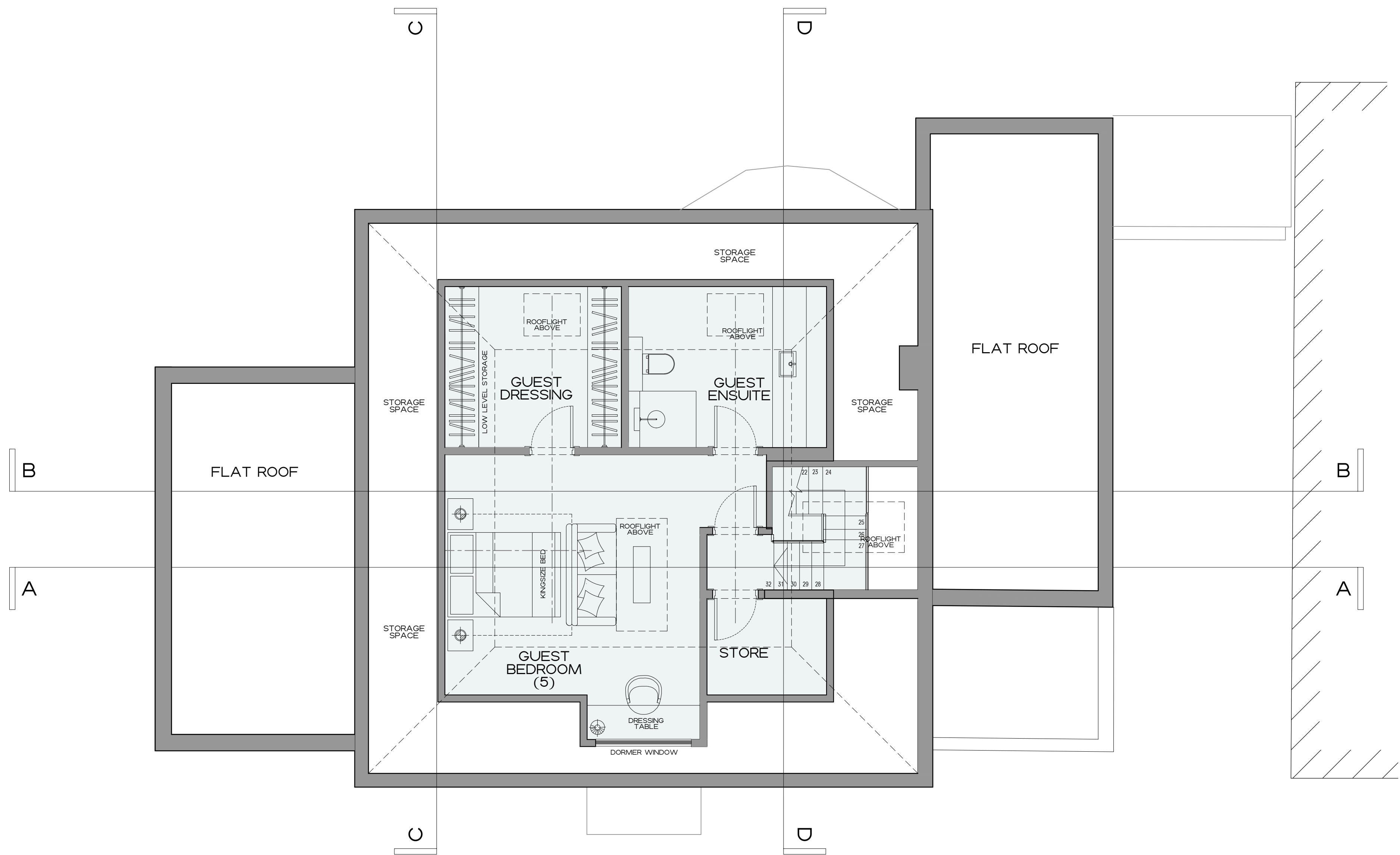
REVISIONS		
A	17.01.20	Updated with revised scheme
B	22.01.20	Updated with comments
C	23.01.20	Updated with comments



7 ST JOHNS WOOD PARK  
CAMDEN  
PROPOSED FIRST  
FLOOR PLAN  
187\_271 REV C  
1:50 @ A1, 1:100 @ A3  
PRELIMINARY

RIGBY & RIGBY

+44 (0)20 3418 0446  
RIGBYANDRIGBY.COM

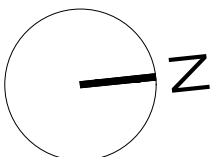
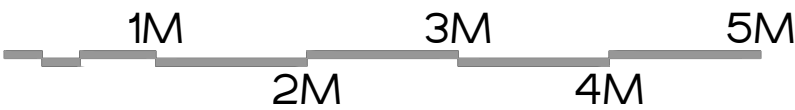


PROPOSED SECOND FLOOR

**DISCLAIMER**  
THIS DRAWING IS THE COPYRIGHT OF RIGBY & RIGBY. DO NOT SCALE. ALL DIMENSIONS TO BE CHECKED ON SITE. PLEASE REFER TO WWW.RIGBYANDRIGBY.COM/LEGAL FOR ALL TERMS & CONDITIONS.



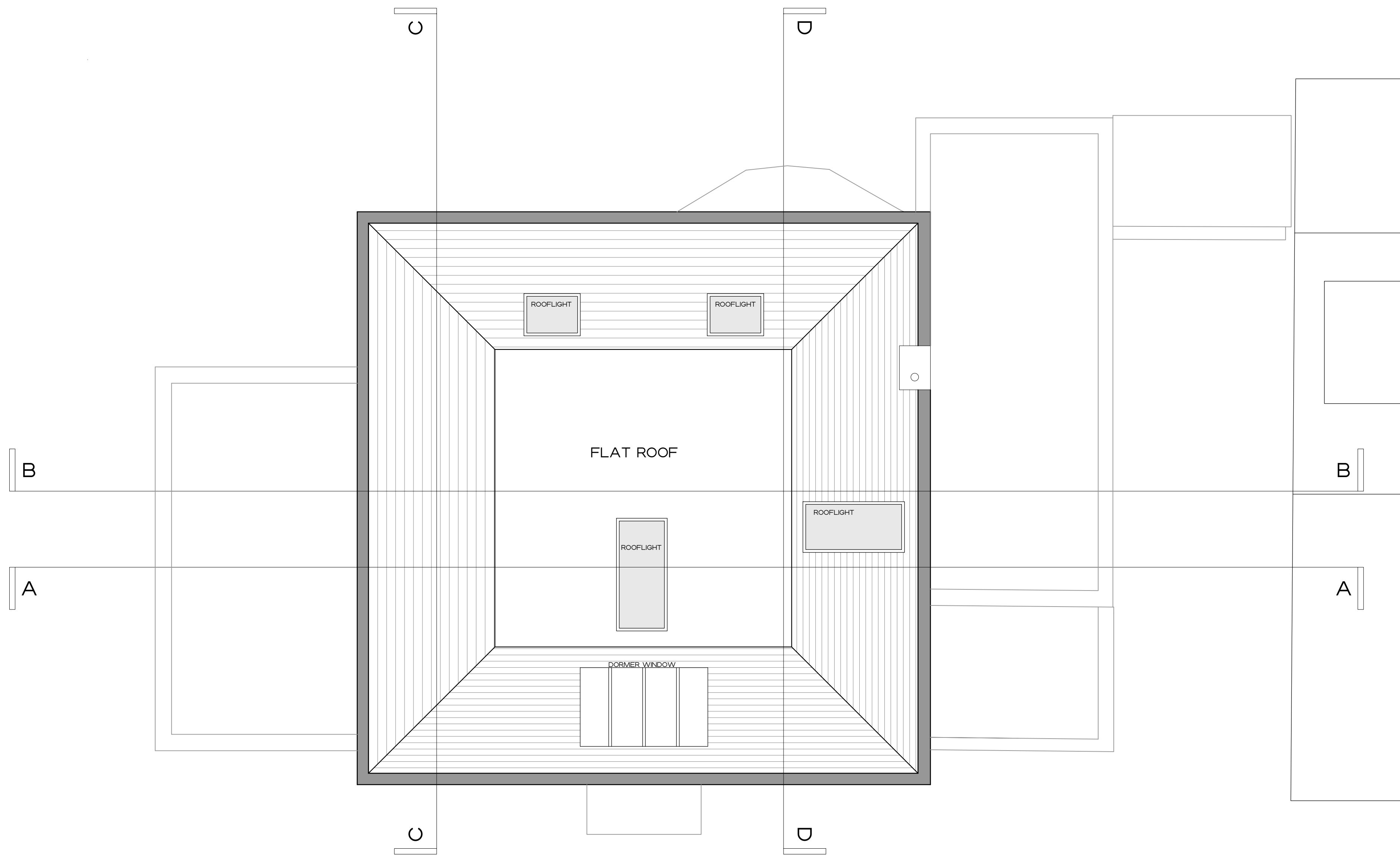
REVISIONS		
A	17.01.20	Updated with revised scheme
B	22.01.20	Updated with comments
C	23.01.20	Updated with comments



7 ST JOHNS WOOD PARK  
CAMDEN  
PROPOSED SECOND  
FLOOR PLAN  
187\_272 REV C  
1:50 @ A1, 1:100 @ A3  
PRELIMINARY



+44 (0)20 3418 0446  
RIGBYANDRIGBY.COM

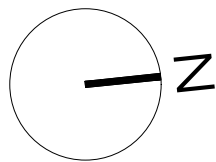
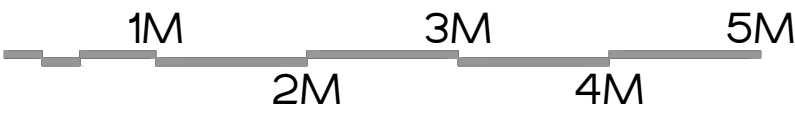


PROPOSED  
ROOF PLAN

**DISCLAIMER**  
THIS DRAWING IS THE COPYRIGHT OF RIGBY & RIGBY. DO NOT SCALE. ALL DIMENSIONS TO BE CHECKED ON SITE. PLEASE REFER TO [WWW.RIGBYANDRIGBY.COM/LEGAL](http://WWW.RIGBYANDRIGBY.COM/LEGAL) FOR ALL TERMS & CONDITIONS.



REVISIONS		
A	17.01.20	Updated with revised scheme
B	22.01.20	Updated with comments
C	23.01.20	Updated with comments



7 ST JOHNS WOOD PARK  
CAMDEN  
PROPOSED ROOF  
PLAN  
187\_273 REV C  
1:50 @ A1, 1:100 @ A3  
PRELIMINARY



+44 (0)20 3418 0446  
[RIGBYANDRIGBY.COM](http://RIGBYANDRIGBY.COM)