



Photo 1

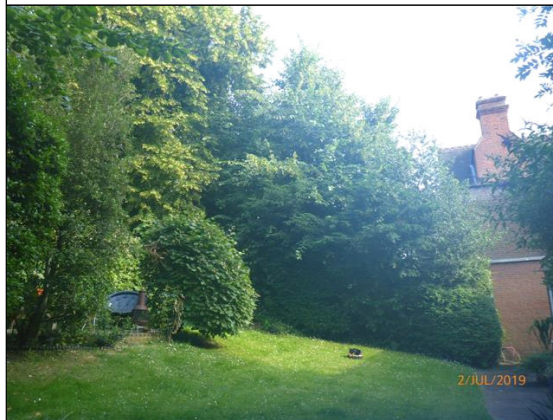


Photo 2

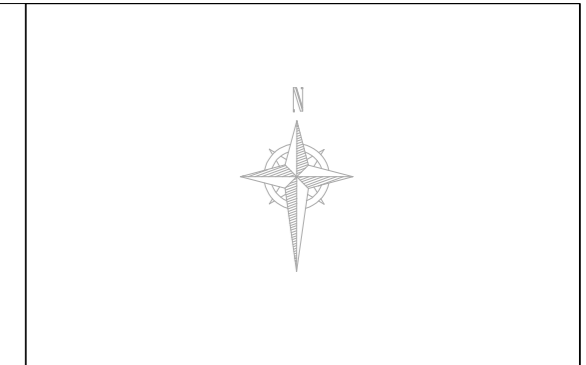


Photo 3



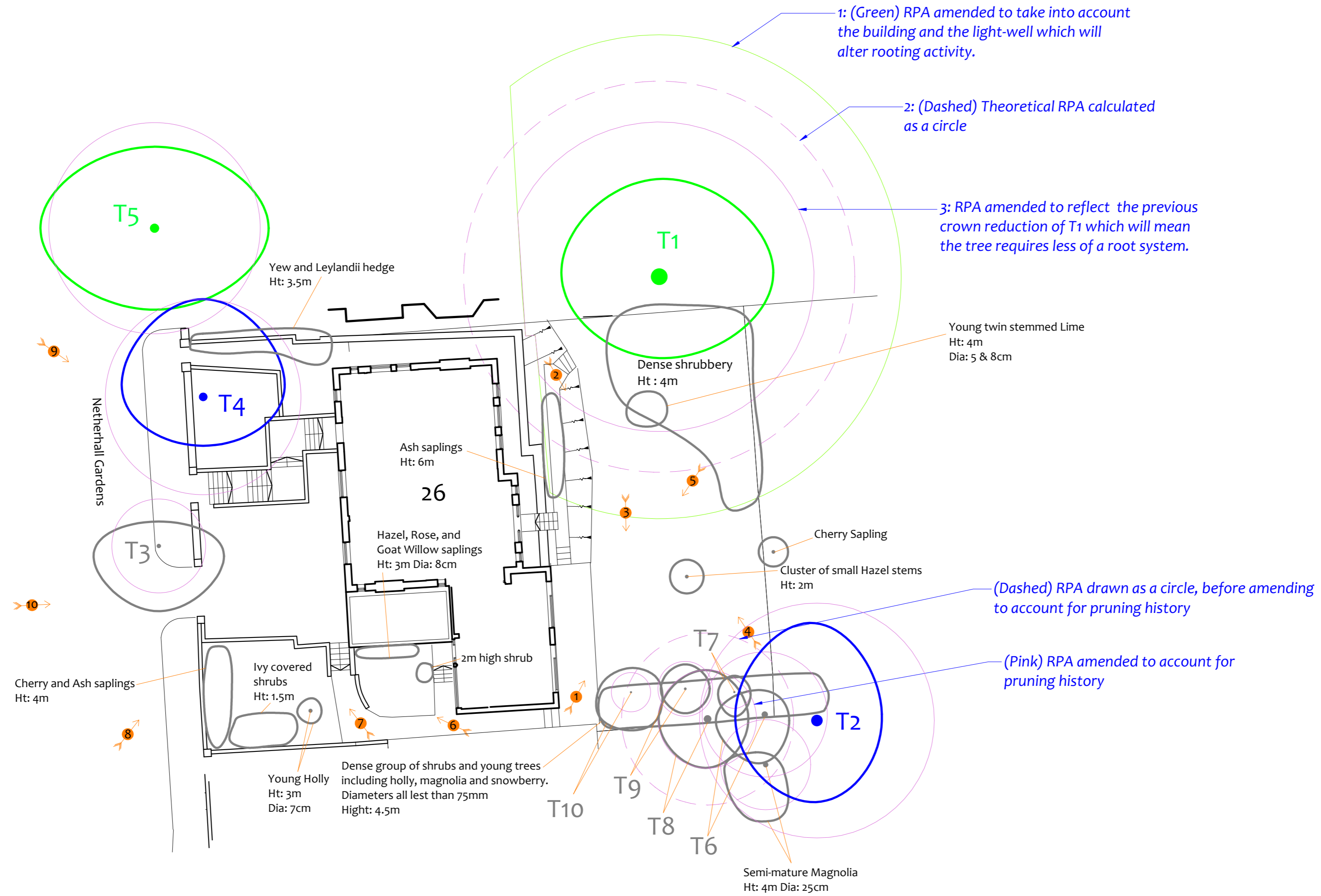
Photo 4

See the accompanying report for more photographs



Tree Constraints Plan

(Existing Layout)



Drawing No: CCL 09552 / TCP Rev: 3

Title: Tree Constraints Plan (Existing Layout)

Site: 26 Netherhall Gardens Camden, NW3 5TL

Scale: 1:200 Paper Size: A2

Tree Retention Categories
Stems & canopies shown

- Category A tree
- Category B tree
- Category C tree
- Category U tree

Trees of high quality with an estimated life expectancy of 40+ years. Usually large trees with significant presence or smaller trees with excellent form. Retention of these trees is highly desirable.

Trees of moderate quality with a life expectancy of 20+ years. Usually maturing trees, or younger trees with good form. Retention of these trees is desirable though less than Category A trees

Unremarkable trees of low quality and merit. Individual specimens are not considered to be a material planning consideration.

Trees unsuitable for retention due to their very poor condition.

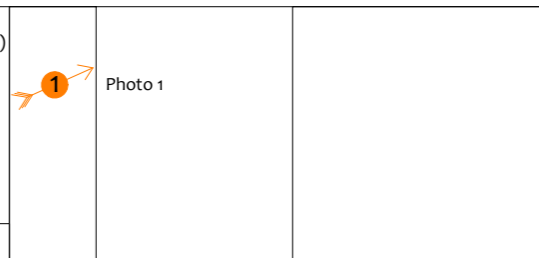
Tree Constraints Plan

BS 5837 Root Protection Area (radius = 12xstem diameter)

Root Protection Area needing amendment due to site conditions, e.g. presence of existing road or building.

Root Protection Area having been amended to account for site conditions

T1 = Tree No 1 G2 = Group No 2 H3 = Hedge No 3

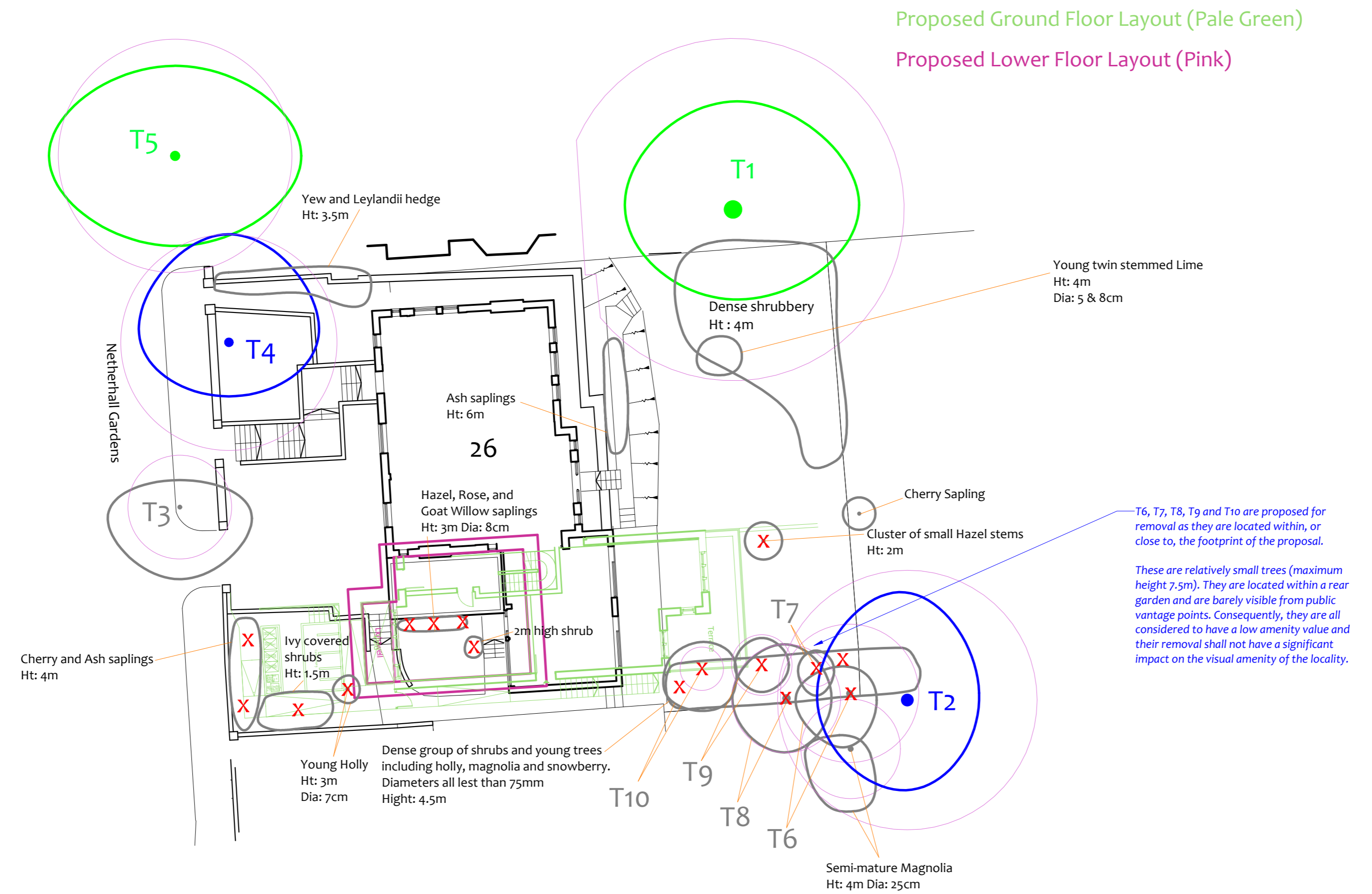


Tree Ref.	Species	Height (m)	Root Protection Area		
			Radius (m)	m ²	Square (m)
T1	Oak	18	12.0	452	21.3
T2	Lime	18	8.2	209	14.5
T3	Cherry	9	2.9	26	5.1
T4	Lime	16	6.0	113	10.6
T5	Silver Maple	19	6.5	132	11.5
T6	Lime	6.5	3.8	46	6.8
T7	Holly	5	1.0	3	1.8
T8	Lime	10	5.3	88	9.4
T9	Yew	4.5	1.7	9	3.0
T10	Holly	6.5	1.2	5	2.1



Impact Assessment Plan

(Existing Layout with Proposals Overlaid)



T6, T7, T8, T9 and T10 are proposed for removal as they are located within, or close to, the footprint of the proposal.

These are relatively small trees (maximum height 7.5m). They are located within a rear garden and are barely visible from public vantage points. Consequently, they are all considered to have a low amenity value and their removal shall not have a significant impact on the visual amenity of the locality.

Tree Ref.	Species	Height (m)	Root Protection Area		
			Radius (m)	m ²	Square (m)
T1	Oak	18	12.0	452	21.3
T2	Lime	18	8.2	209	14.5
T3	Cherry	9	2.9	26	5.1
T4	Lime	16	6.0	113	10.6
T5	Silver Maple	19	6.5	132	11.5
T6	Lime	6.5	3.8	46	6.8
T7	Holly	5	1.0	3	1.8
T9	Yew	4.5	1.7	9	3.0
T10	Holly	6.5	1.2	5	2.1

Drawing No: CCL 09552 / IAP Rev: 4
 Title: Impact Assessment Plan (Existing Layout with Proposals Overlaid)
 Site: 26 Netherhall Gardens Camden, NW3 5TL
 Scale: 1:200 Paper Size: A2



Tree Retention Categories		Stems & canopies shown
	Category A tree	Trees of high quality with an estimated life expectancy of 40+ years. Usually large trees with significant presence or smaller trees with excellent form. Retention of these trees is highly desirable.
	Category B tree	Trees of moderate quality with a life expectancy of 20+ years. Usually maturing trees, or younger trees with good form. Retention of these trees is desirable though less than Category A trees.
	Category C tree	Unremarkable trees of low quality and merit. Individual specimens are not considered to be a material planning consideration.
	Category U tree	Trees unsuitable for retention due to their very poor condition.

Impact Assessment Plan

BS 5837 Root Protection Area (radius = 12xstem diameter)

Root Protection Area needing amendment due to site conditions, e.g. presence of existing road or building.

Root Protection Area having been amended to account for site conditions

Tree to be removed to facilitate the proposal

Tree to be removed due to its low quality

Proposed pruning

T1 = Tree No 1 G2 = Group No 2 H3 = Hedge No 3

Excerpts from the Arboricultural Method Statement

Section B: Restrictions on Activities – Specific Zones

Construction Exclusion Zones
Within Construction Exclusion Zones (shaded purple on the Tree Protection Plan) the following restrictions shall apply:

- Tree Protection Barriers shall be erected and maintained throughout the entire project as indicated on the Tree Protection Plan and specified in Section 9 - Tree Protection Barriers.
- No construction activity whatsoever shall occur.
- No excavation whatsoever shall occur.
- No vehicles or plant machinery shall be driven or parked.
- No tree works, other than those specified in this report shall be undertaken.
- No alterations of ground levels or conditions.
- No chemicals or cement washings permitted.
- No temporary structures shall be installed.
- No spoil shall be stored.
- No fires shall be permitted.
- All hazardous materials (including non-essential cement products) shall be forbidden.

Restricted Activity Zone

Within this zone (indicated on the Tree Protection Plan) trees roots are likely to be present. Access will be required to facilitate construction. The following restrictions shall apply:

- A suitable load spreading surface shall be installed and/or maintained as specified in Section 10 - Ground Protection Measures. This shall remain in place throughout the entire construction phase.
- No new permanent or temporary structures shall be erected without written approval from the local authority.
- Existing ground levels shall be retained undisturbed or raised by no more than 150mm. Ground levels may only be raised using granular topsoil (not rich in clay) or where new surfacing is proposed.
- Storage of materials and spoil shall be avoided unless it has been agreed with the project arborist that the ground protection measures are adequate to ensure no soil compaction or contamination occurs. All hazardous materials (including non-essential cement products) shall be forbidden.
- No fires shall be permitted.

See Section 6 for more restrictions that apply throughout the site

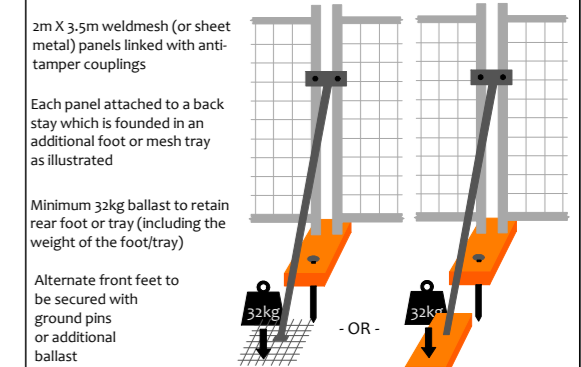


Tree Protection Plan

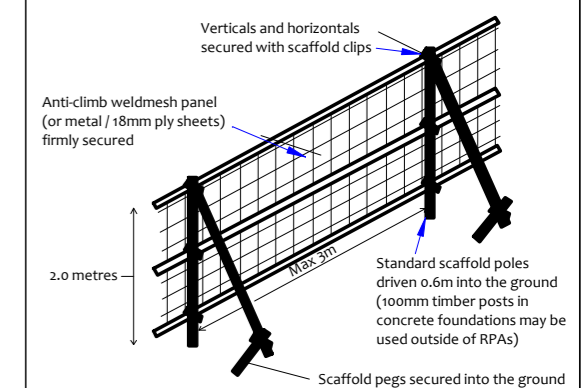
Tree Protection Barriers:

	Fixed protective barrier: The 'In-Ground System' or the 'Backstay System'. To remain in place for all construction activity		Construction Exclusion Zone Stem protected to a height of 2.5m with thick cloth & wire
	Moveable protective barrier: The 'Backstay System'. To remain in place except when approved works are being undertaken in the Restricted Zone		

The 'Back Stay System'



The 'In-Ground' System

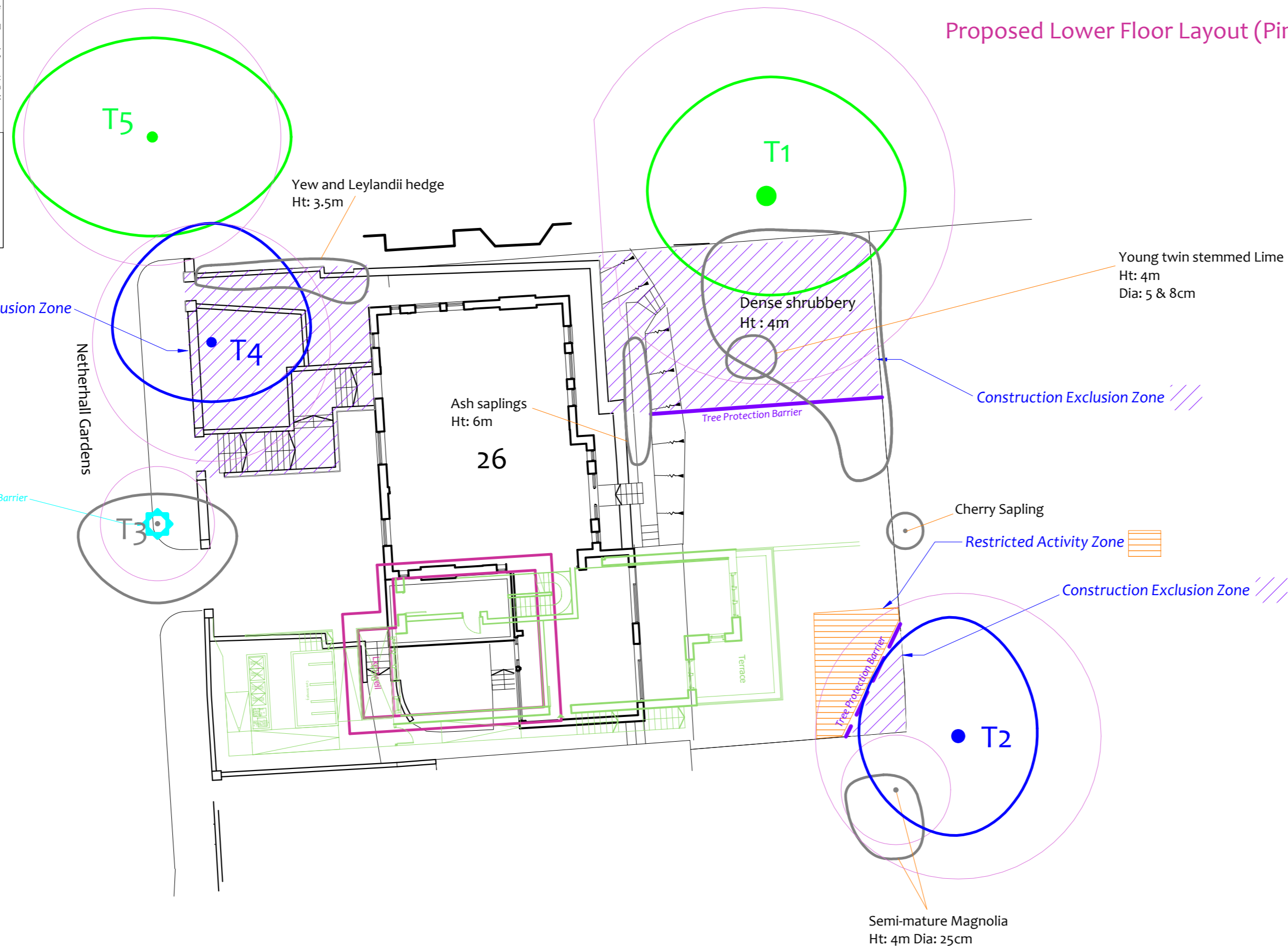


Construction Exclusion Zone

- Within this area the following restrictions shall apply:
- No excavation or land regrading whatsoever.
 - No storage of materials, rubble, soil or spoil.
 - No fires within the exclusion zone or within 10m of any tree canopy.
 - No site cabins or other temporary structures.
 - No discharge of polluted water, cement or chemicals of any kind.
 - No use of any machinery, or passage or parking of vehicles.
 - No tree works without council consent.

Restricted Activity Zone

Restrictions are detailed within the accompanying Method Statement



Tree Protection Plan

Drawing No:	CCL 09552 / TPP Rev: 4
Title:	Tree Protection Plan (Existing Layout with Proposals Overlaid)
Site:	26 Netherhall Gardens Camden, NW3 5TL
Scale: 1:200	Paper Size: A2



Tree Retention Categories	
Stems & canopies shown	
	Category A tree
	Category B tree
	Category C tree
	Category U tree

- Trees of high quality with an estimated life expectancy of 40+ years. Usually large trees with significant presence or smaller trees with excellent form. Retention of these trees is highly desirable.
- Trees of moderate quality with a life expectancy of 20+ years. Usually maturing trees, or younger trees with good form. Retention of these trees is desirable though less than Category A trees
- Unremarkable trees of low quality and merit. Individual specimens are not considered to be a material planning consideration.
- Trees unsuitable for retention due to their very poor condition.

- BS 5837 Root Protection Area (radius = 12xstem diameter)
 - Root Protection Area needing amendment due to site conditions, e.g. presence of existing road or building.
 - Root Protection Area having been amended to account for site conditions
- T1 = Tree No 1 G2 = Group No 2 H3 = Hedge No 3

Tree Ref.	Species	Height (m)	Root Protection Area		
			Radius (m)	m ²	Square (m)
T1	Oak	18	12.0	452	21.3
T2	Lime	18	8.2	209	14.5
T3	Cherry	9	2.9	26	5.1
T4	Lime	16	6.0	113	10.6
T5	Silver Maple	19	6.5	132	11.5
T6	Lime	6.5	3.8	46	6.8
T7	Holly	5	1.0	3	1.8
T8	Lime	10	5.3	88	9.4
T9	Yew	4.5	1.7	9	3.0
T10	Holly	6.5	1.2	5	2.1

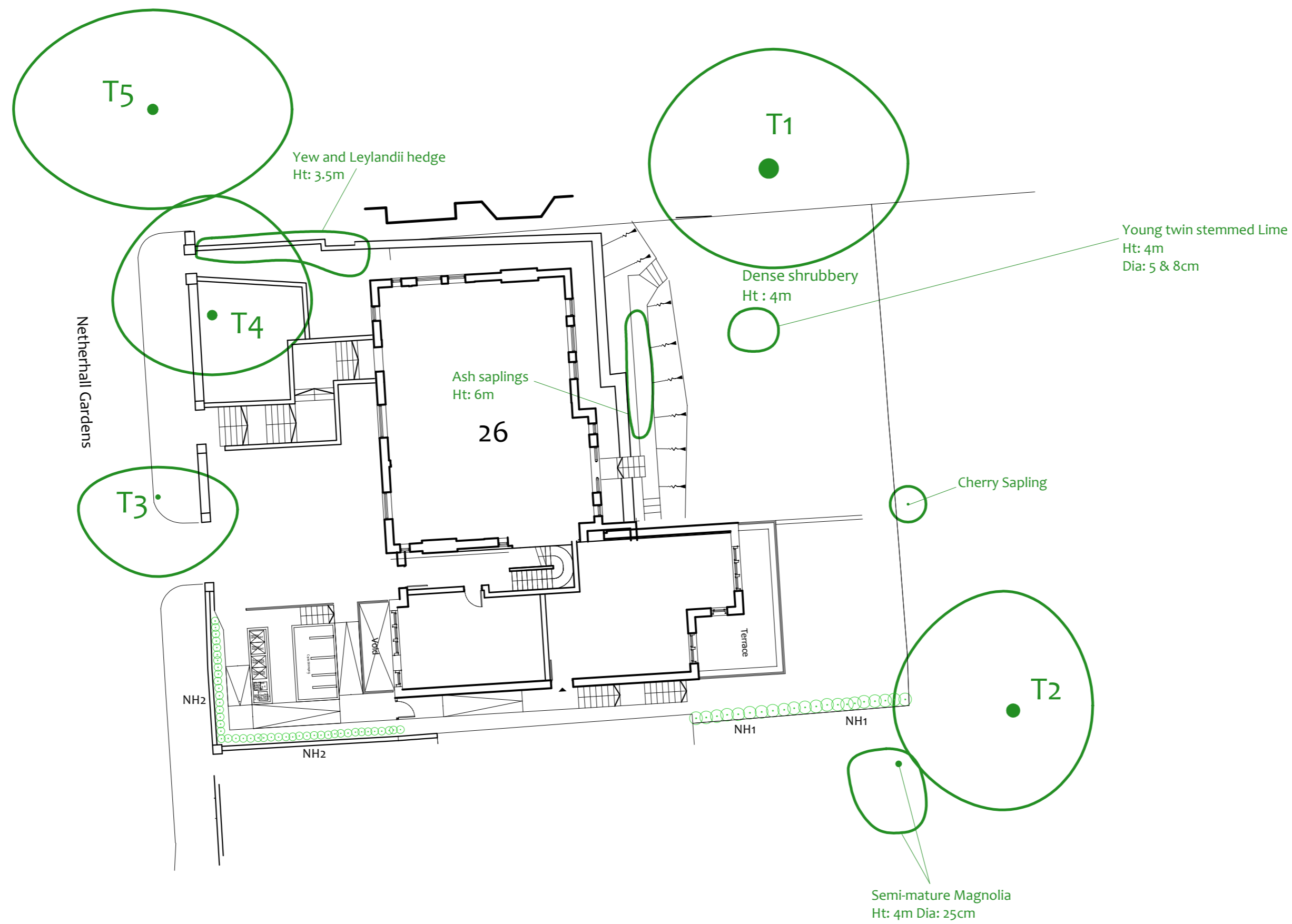


Proposed Planting Plan

(Tree Planting)

Hedge Planting Schedule:

Ref:	Species:	Hedge Length	No:	Size:
NH1	Lawson Cypress <i>Chamaecyparis lawsoniana</i>	10.5m in length, 0.6m spacing	18 specimens	120-150cm height (3 litre pot)
NH2	Common Holly <i>Ilex aquifolium</i>	15m in length, 3 per metre	44 specimens	30-40cm height (1 litre pot)



Tree Ref.	Species	Height (m)	Root Protection Area		
			Radius (m)	m ²	Square (m)
T1	Oak	18	12.0	452	21.3
T2	Lime	18	8.2	209	14.5
T3	Cherry	9	2.9	26	5.1
T4	Lime	16	6.0	113	10.6
T5	Silver Maple	19	6.5	132	11.5
T6	Lime	6.5	3.8	46	6.8
T7	Holly	5	1.0	3	1.8
T8	Lime	10	5.3	88	9.4
T9	Yew	4.5	1.7	9	3.0
T10	Holly	6.5	1.2	5	2.1

Drawing No: CCL 09552 / PPP Rev: 1

Title: Proposed Tree Planting Plan
(Proposed Layout)

Site: 26 Netherhall Gardens
Camden, NW3 5TL

Scale: 1:200 Paper Size: A2

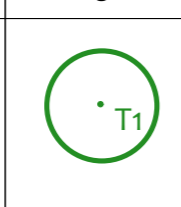


Proposed Hedge Planting

NH1 Proposed location of new hedge reference NH1 (*Chamaecyparis lawsoniana*).

NH2 Proposed location of new hedge reference NH2 (*Ilex aquifolium*).

Existing Trees



Proposed Planting Plan