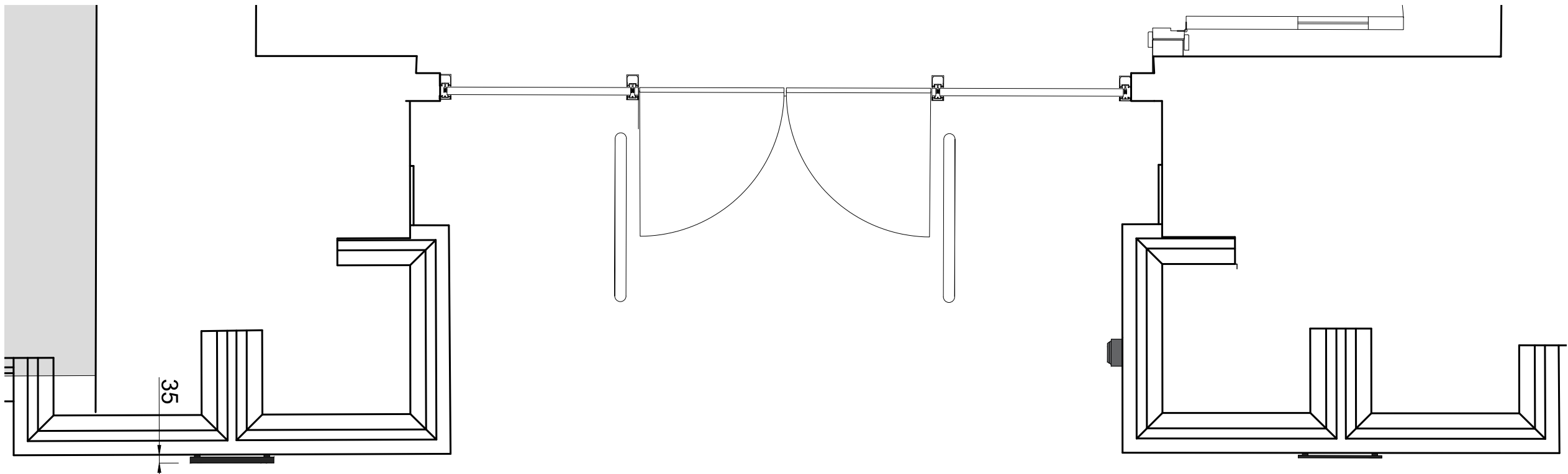


dD05 | Assembly detail: Proposed Kingsway Entrance  
01 | Detailed elevation (scale 1/20)

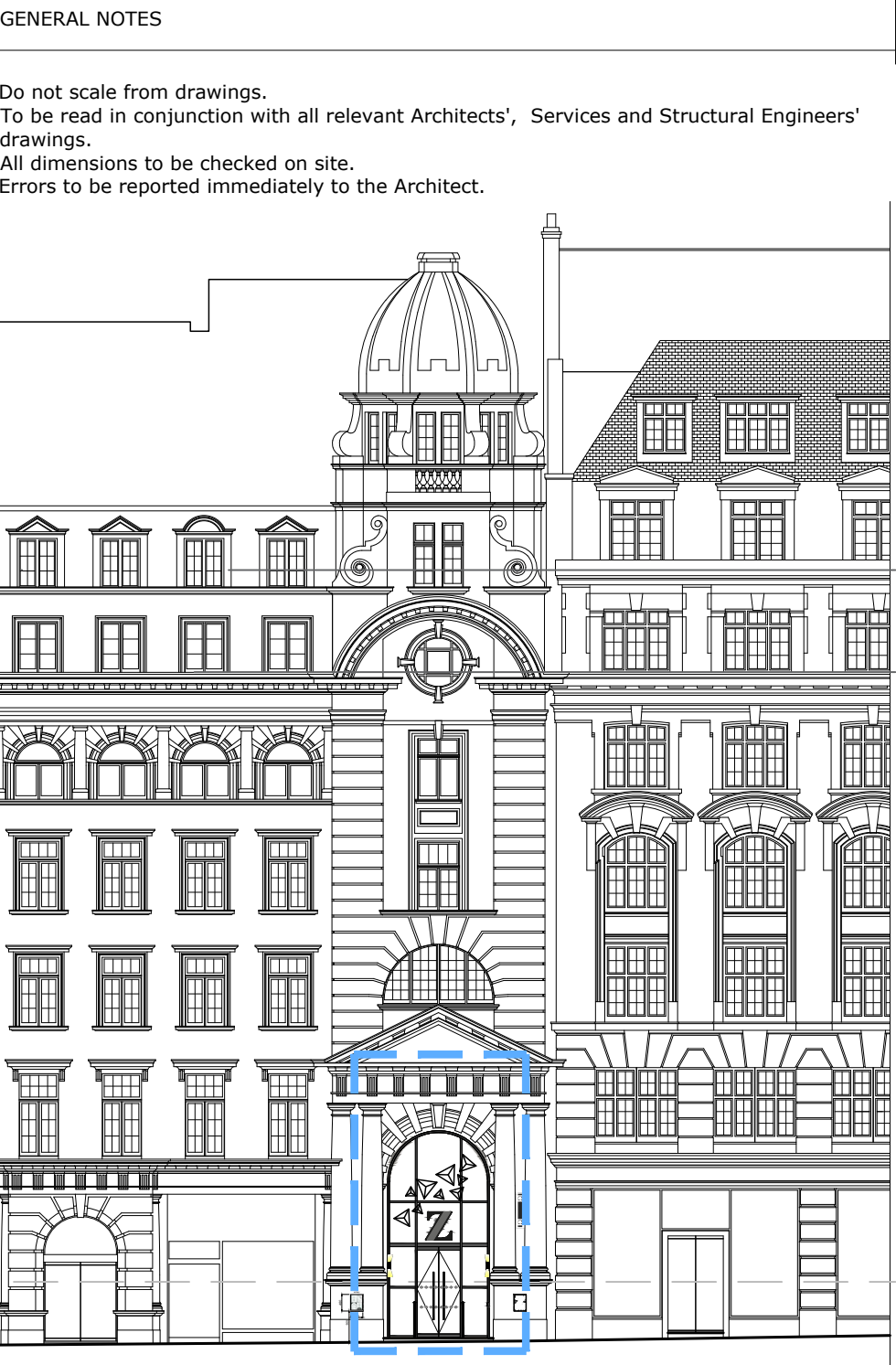
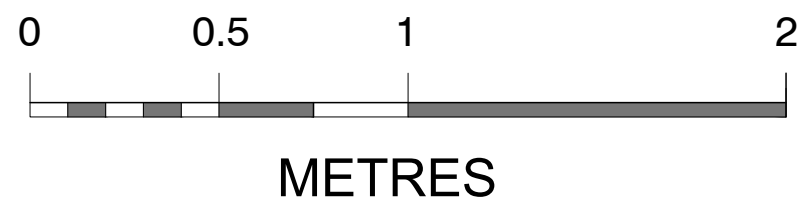


dD05 | Assembly detail: Proposed Kingsway Entrance  
02 | Detailed plan (scale 1/20)

**Menu board**  
Aluminum frame: powder-coated black  
Case: 3mm clear acrylic glazing  
Text colour: black  
Background: white



dD05 | Assembly detail: Proposed Kingsway Entrance  
03 | Reference picture



dD05 | Assembly detail: Kingsway Entrance  
04 | Main front elevation

P2	22.01.2020	For Planning	MS	PA
P1	02.12.2019	For Planning	MS	PA
Rev.	Date	Description	DB	CB

## TT Architects

2 Eustace House  
Old Paradise Street  
London, SE11 6AN

Project  
Z-WILD COURT  
4 Wild Court & 75 Kingsway  
London  
WC2B 4AU

Client  
Z Hotels

Drawing Name  
Assembly detail: Proposed Kingsway Entrance  
Detailed Elevation

Date  
20.03.2019  
Issue  
For Planning

Scale  
1:20 @ A1  
Drawn/Checked  
PA/PA

Drawing No. & Revision

005-dD05-P2