

Orms

Project

St Giles Circus

Title

Planning Condition Discharge - Materials

Client

Consolidated Developments

Date

October 2019



Project name	Orms project number	Project team code	File
ST GILES CIRCUS	1793	SGC	1793 SGC Planning Condition Discharge

Revision	Date	Description	Status	Created	Checked
PL01	03.10.19	Planning Conditions Discharge - Materials	PL - PLANNING	DP	RV
PL02	20.01.20	Planning Conditions Discharge - Materials	PL - PLANNING	DP	RV

Contents

Consent 2019/2268/L - Condition 5

Roof tiles	p.05
Lead	p.08
Cast iron	p.11
Brickwork	p.12
Stone	p.14
Shopfronts	p.17
Timber decking	p.19

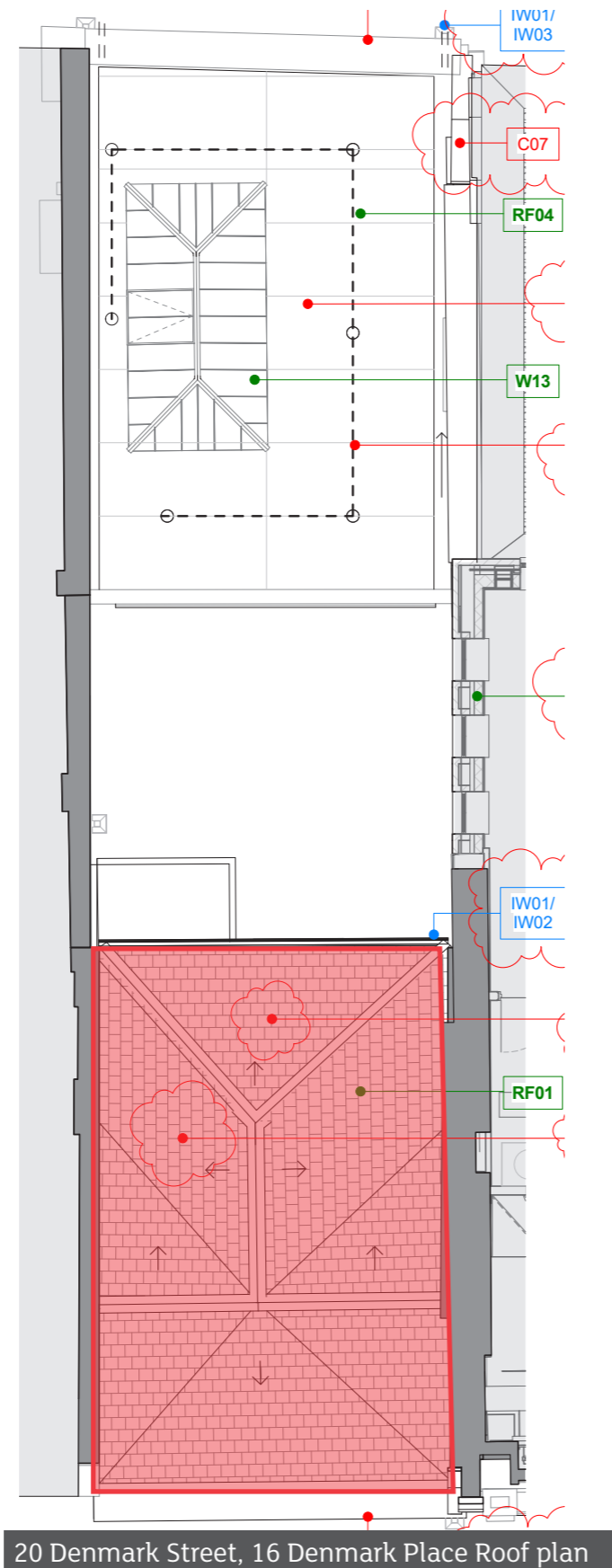
Consent 2019/2268/L Condition No 5
Consent 2019/1762/P Condition No 2

Property: 20 Denmark Street and 16 Denmark Place

Roof tiles


20 Denmark Street

 Roof tiles



20 Denmark Street, 16 Denmark Place Roof plan



DECLARATION OF PERFORMANCE Number DOP: (135195) - 23997		Hangman's Wood Industrial Park Stifford Road South Ockendon Essex RM15 6RL	
			
1) Identification code of product type:	Clay Roofing Tiles & Fittings		
2) Identification of the construction product:	Clay Roofing Tiles & Fittings		
6) Assessment and variation of constancy of performance: system	4		
9) Declared Performances:	3) Intended Uses		
Essential Characteristics	Roof Coverings	External Wall Cladding	
Mechanical Resistance	Pass	-	
External Fire Performance	Conform	-	
Reaction To Fire	A1	A1	EN 1304: 2013
Water Impermeability - Category - Test Method	1 1	1 1	
Dimensions & Dimensional Tolerance	Pass	-	
Durability	Level 1 (150)	Level 1 (150)	
Release Of Dangerous Substances	NPD	NPD	
10) The performance of the product is in conformity with the declared performance in point 9. This declaration of performance is issued under the sole responsibility of the manufacturer identified in point 4.			
Hangman's Wood Industrial Park Stifford Road South Ockendon Essex RM15 6RL	SIGN:		



50 YEAR GUARANTEE

Heritage Clay Tiles Limited gives 50 year guarantee for products produced and delivered to Heritage Clay Tiles Limited.

The warranty covers the following quality parameters in accordance with **EN-1304:2013:**

1. Water Absorption
2. Impermeability
3. Strength
4. Freeze/Thaw Resistance

The warranty does not cover mechanical damage caused by misuse, storage, transport, loading or unloading in the UK after delivery of products to the company Heritage Clay Tiles Limited.

The warranty does not include improper installation of roof tiles and a failure to follow installation instructions tile.

The complaint requires notification to Heritage Clay Tiles Ltd and consultation on how to proceed before considering the complaint.

The warranty is issued only to Heritage Clay Tiles Limited and includes products in the first grade. This warranty does not cover products downgraded to second quality grade and products for which was granted for a discount.

Heritage Clay Tiles Ltd
 Hangman's Wood Industrial Park
 Stifford Road
 South Ockendon
 Essex RM15 6RL
 TEL: 01708 853953
 WEB: www.heritagetiles.co.uk



EN 1304 : 2013

DOP: (135195 – 23997)

**Hangman's Wood Industrial Park
Stifford Road
South Ockendon
Essex RM15 6RL**

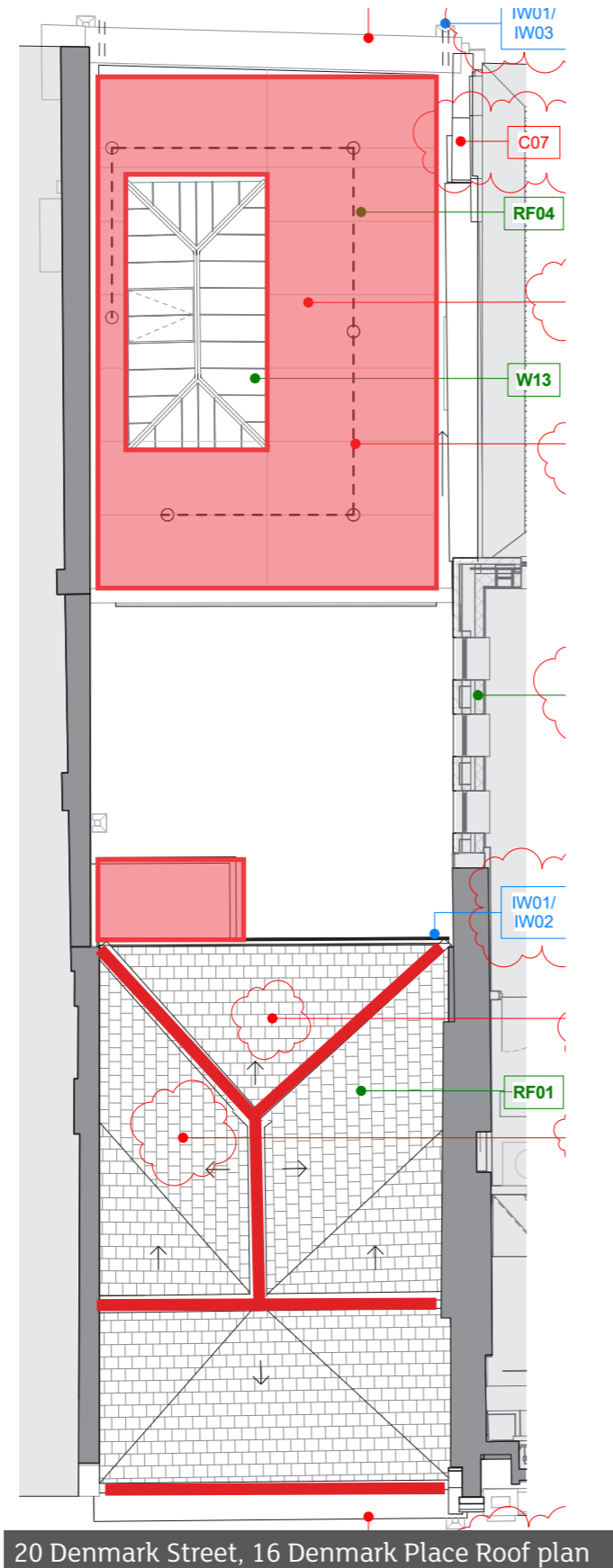
Clay Roofing Tiles & Fittings

Mechanical Resistance	Pass
External Fire Performance	Conform
Reaction To Fire	A1
Water Impermeability:	
- Category	1
- Test Method	1
Dimensions & Dimensional Tolerance	Pass
Durability	Level 1 (150)
Release Of Dangerous Substances	NPD

Lead

20 Denmark Street and 16 Denmark Place

 Lead



20 Denmark Street, 16 Denmark Place Roof plan





British Lead

Metallic Lead

1. IDENTIFICATION OF SUBSTANCE/PREPARATION AND COMPANY/UNDERTAKING

Product Name:	Metallic Lead
Use:	Used in the construction industry for roofing, flashing and cladding applications. Also used as shielding in the x-ray and nuclear industries and sound attenuation applications.
Supplier:	British Lead Peartree Lane Welwyn Garden City Hertfordshire AL7 3UB Telephone: 01707 324595 Fax: 01707 328941

2. COMPOSITION/INFORMATION ON INGREDIENTS

Ingredient:	Lead
EU No:	231-100-4
Cas No:	7439-92-1
Content %:	>99

3. HAZARDS IDENTIFICATION

Main Hazards:	Lead in its solid metallic state (Lead sheet) would not normally present a hazard. However, Lead is a toxic metal and may present a hazard via Lead fumes when melted and/or from Lead dust. Low concentrations of other various elements will be present, some as alloying constituents, others, as impurities. Oxidation of the surface of the Lead will occur forming a surface layer of Lead compounds.
----------------------	---

4. FIRST AID MEASURES

Inhalation of Fumes or Dust:	The measures below are unlikely to be relevant whilst Lead is in its solid metallic state. However they are relevant if there is a likelihood of exposure to fumes from melting Lead and Lead dust compounds on the surface caused by oxidation. Move person to fresh air. Seek medical attention.
Ingestion of Dust:	Do not induce vomiting, encourage drinking of water. Seek immediate medical attention.
Eye Contact from Dust:	Ensure that any contact lenses are removed from the eyes before rinsing. Irrigate eyes with plenty of water for 5 minutes and seek medical attention if irritation persists.
Skin Contact:	Remove potentially contaminated clothing after using Lead products. Wash affected area with soap and water. Lead would not normally irritate the skin. Seek medical attention if irritation persists as it may be due to contact with other substances or chemicals.

5. FIRE-FIGHTING MEASURES

Extinguishing Media:	Non flammable but molten Lead may ignite adjacent materials. Use Dry powder, CO ₂ or Foam. Do not use water.
Exposure Hazards:	Toxic Fumes may be produced during a fire.
Protection of Firefighters:	Wear positive pressure self contained breathing apparatus and suitable protective clothing.

6. ACCIDENTAL RELEASE MEASURES

Personal Protection:	No special measures required whilst Lead is in its solid metallic state. When melting Lead or cleaning up any Lead spillage protective clothing must be worn, this would include eye protection, gloves and an approved face mask. This precaution also applies if Lead dust is present.
Environmental Precaution:	Avoid entry into water courses.
Clean-up Procedures:	Spillages should be cleaned and placed in to a sealed container and then sent to a Lead processing company for treatment.

7. HANDLING AND STORAGE

Handling Precautions:	Lead is a heavy metal; extreme care should be taken when lifting the material. Follow the guidelines set out in the HSE Manual Handling Regulations. Wear gloves, protective clothing and boots and follow standard personal hygiene procedures.
Storage:	Store in a dry area, ensure that the floor loading is not exceeded.

8. EXPOSURE CONTROLS/PERSONAL PROTECTION

Component:	TWA Lead 8 Hours 0.15mg/m ³
Respiratory Protection:	Wear approved face masks when melting Lead or working in the vicinity of Lead dust particles especially when stripping old Lead roofs – make sure the face mask meets the standard required. Employ mechanical ventilation equipment when melting Lead in enclosed areas.
Hand Protection:	Wear suitable gloves.
Eye Protection:	Wear safety goggles when melting Lead or Lead welding.
Skin Protection:	Wear gloves and protective clothing. Follow standard personal hygiene procedures.

9. PHYSICAL AND CHEMICAL PROPERTIES

Appearance:	Bluish grey soft metal
Melting Temperature:	327°C
Fuming Temperature:	500°C
Density:	11.34g/cm ³
Odour:	None
Flash Point:	N/A
Solubility in Water:	Insoluble

10. STABILITY AND REACTIVITY

Stability:	Stable under normal conditions at low temperature.
Conditions to Avoid:	N/A
Materials to Avoid:	Ammonium nitrate, chloride trifluoride, hydrogen peroxide, potassium, sodium azide, sodium carbide and zirconium.
Hazardous Decomposition Products:	Lead is a toxic metal and may produce hazardous fumes when melted.

11. TOXICOLOGICAL INFORMATION

Inhalation:	The details below are unlikely to be relevant whilst Lead is in its solid metallic state. However they are relevant when exposed to fumes from melting Lead and Lead compounds on the surface caused by oxidation and from Lead dust. Prolonged unprotected exposure could lead to various symptoms typical of Lead poisoning although this is extremely rare.
Ingestion:	Could cause nausea or abdominal pain. Prolonged exposure could lead to various symptoms typical of Lead poisoning although this is extremely rare.
Skin Contact:	Prolonged unprotected contact with Lead could lead to absorption of Lead particles into the blood stream, eventually leading to various symptoms typical of Lead poisoning although this is extremely rare.
Eye Contact:	Possible irritation.

12. ECOLOGICAL INFORMATION

Mobility:	Not considered mobile whilst Lead is in its solid metallic state. Particles can be dispersed through the air or in water courses.
Degradation:	Not biodegradable.
Accumulation:	Lead compounds have bioaccumulation potential.
Other Adverse Effects:	Lead compounds are toxic to aquatic organisms.

13. DISPOSAL CONSIDERATIONS

Waste from Residues:	Surplus metal may be returned to British Lead for recycling. Disposal of compounds must be to a licensed waste collection point, observe any local and national regulations.
Contaminated Packaging:	N/A

14. TRANSPORT INFORMATION:

No restrictions on transportation.



15. REGULATORY INFORMATION

Label for Supply:	N/A
Text of Risk Phrases Used in Section 2:	N/A
Text of Safety Phrases Used in Section 2:	N/A
Statutory Instrument:	Chemicals (Hazards Information and Packaging) Regulations 2009 SI 716. Control of Substances Hazardous to Health 2002; SI 1000/437. Control of Lead at Work Regulations 2002; SI 2002/2676.
Approved Codes of Practice:	Classification and Labelling of Substances and Preparations Dangerous for Supply. The Compilation of Safety Data Sheets (3rd Edition).
Guidance:	Occupational Exposure Limits EH40 COSHH Essentials: Easy steps to control chemicals. Control of Substances Hazardous to Health Regulations; HSG193 CHIP for Everyone HSG108.

16. OTHER INFORMATION

The application of the soft metal presents negligible risks providing standard sensible workplace cleanliness is adopted. Working with molten Lead or Lead alloys requires the use of approved eye protection and other recognized personal protection such as approved protective face masks. The appropriate health and safety requirements are defined in the Control of Lead at Work Regulations 2009. It is recommended that a simple work place risk assessment is made in accordance with the point stated on pages 1, 2 & 5 of the regulations. In general, working with the metal in the open air presents negligible risk providing adequate washing facilities are available at the workplace for hand cleaning.

The data contained in this Safety Data Sheet has been supplied as required by the Chemical (Hazard Identification and Packaging) Regulations 2009, as amended, for the purpose of protecting the health and safety of industrial and commercial users who are deemed capable of understanding and acting on the information provided. Please ensure that it is passed to the appropriate person(s) in your company, who are capable of acting on the information. This information is given in good faith, being based on the latest knowledge available to British Lead. No known relevant information has been omitted from this Material Safety Data Sheet and the information provided is designed to enable the user to use the product safely. The user should not assume on the basis of the information provided in this sheet that the product is suitable for any abnormal use. The company can not accept liability to any customer, their employees or any other person whatsoever for any loss, injury or damage, whether direct or consequential, which may be caused by any error or omission from this sheet, whether such error or omission is negligent or otherwise. If the information provided is insufficient to ensure safety in any particular application, contact British Lead for further advice before the proposed application is undertaken.

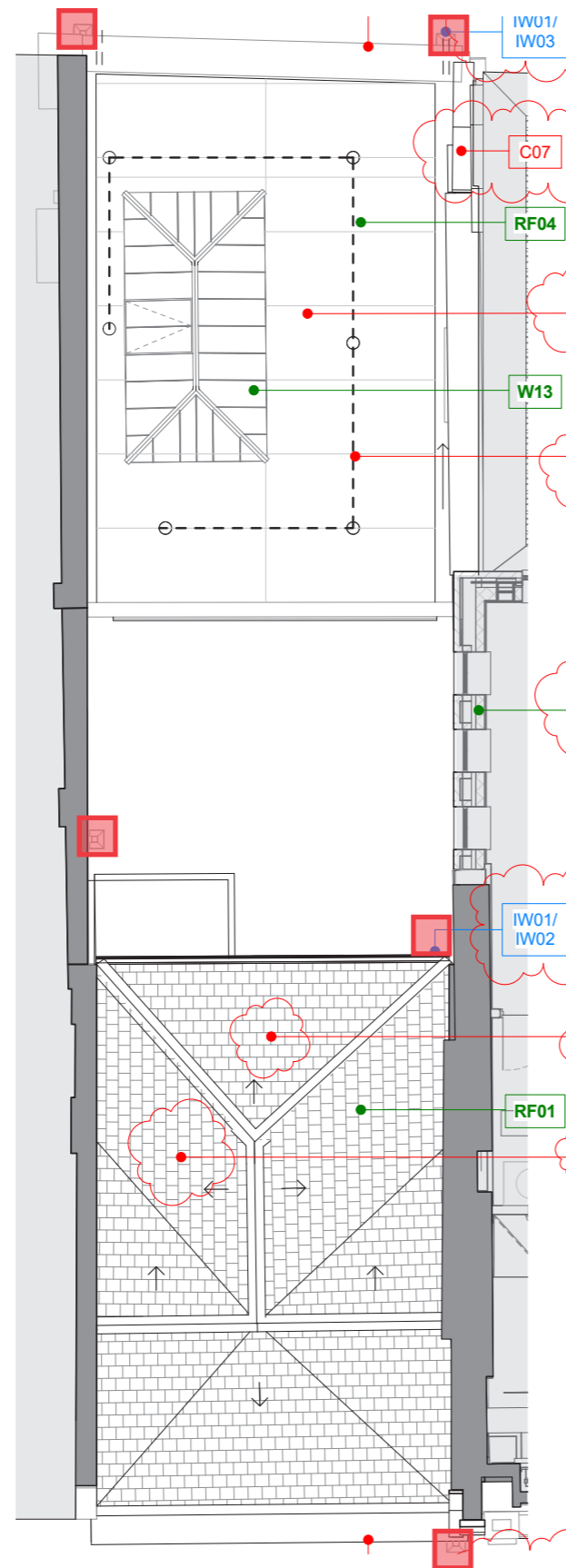
02/11

British Lead, Peartree Lane, Welwyn Garden City, Hertfordshire AL7 3UB
Tel: 01707 324 595 Fax: 01707 328 941 email: sales@britishlead.co.uk

Cast Iron

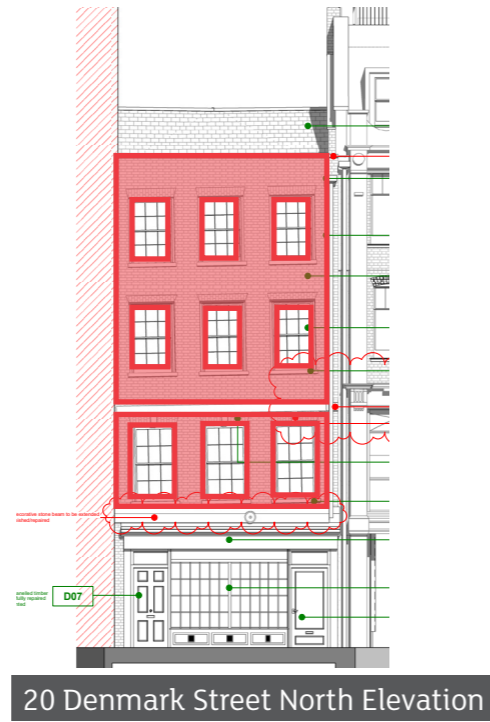
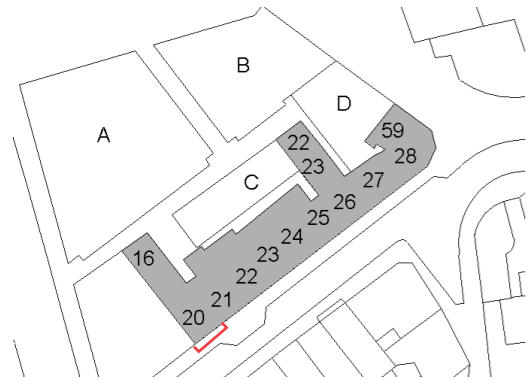
20 Denmark Street

 Roof tiles

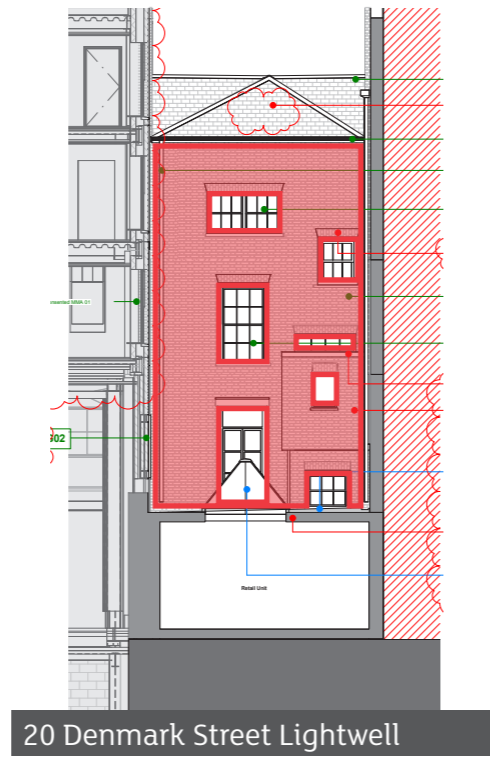
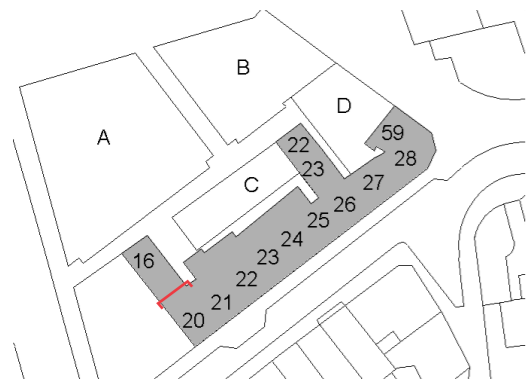


Existing Brickwork

 Brickwork



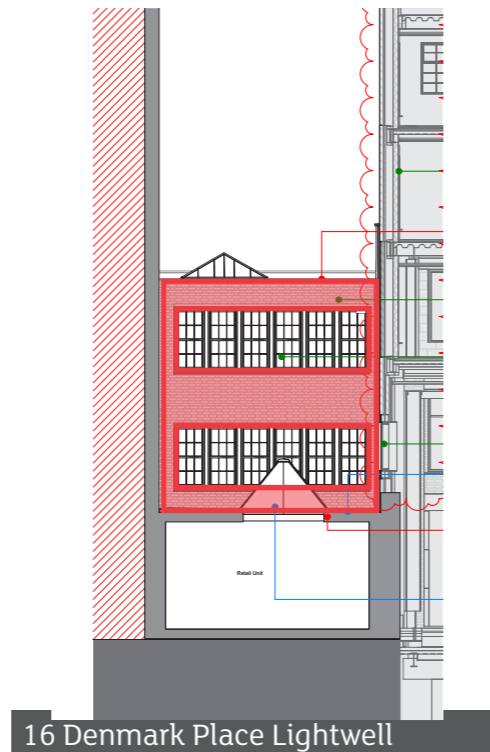
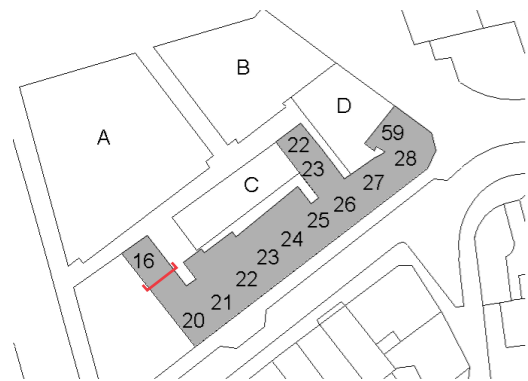
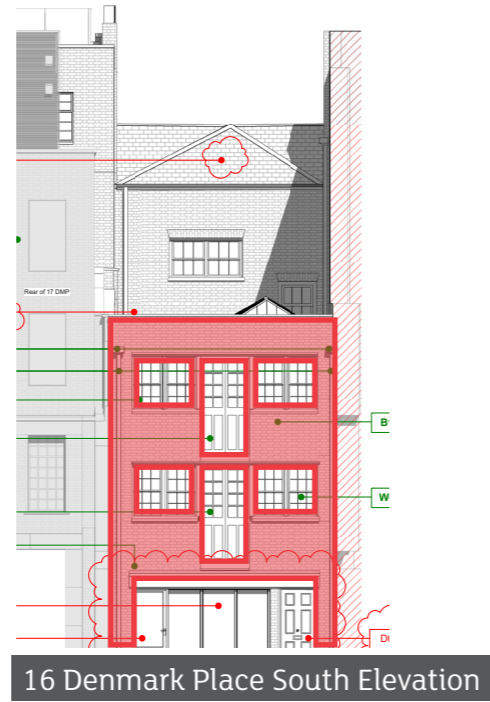
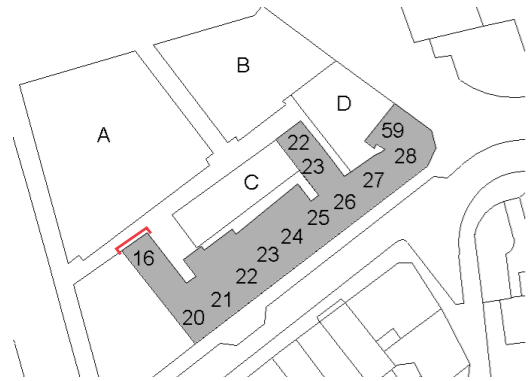
20 Denmark Street North Elevation



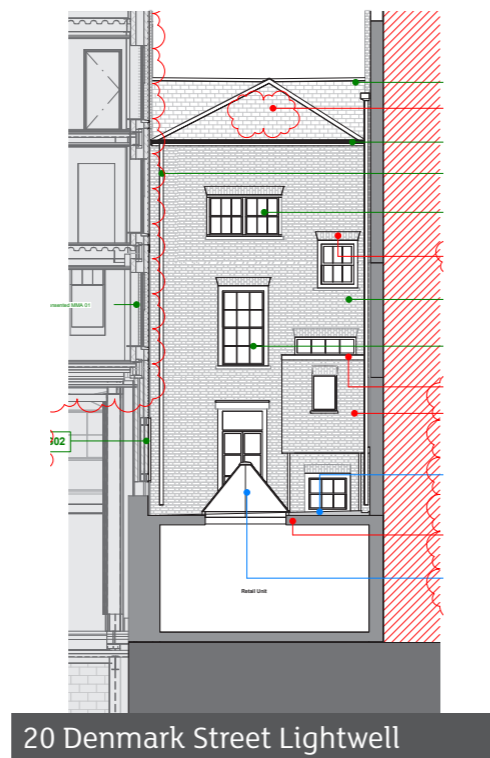
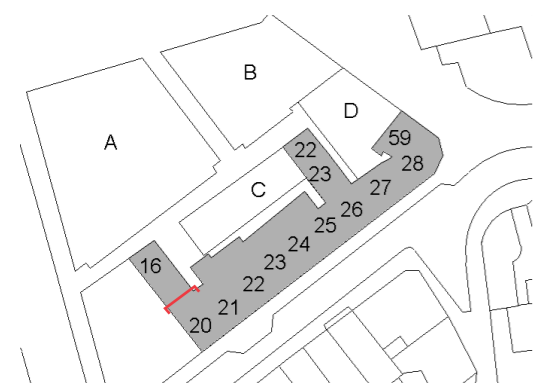
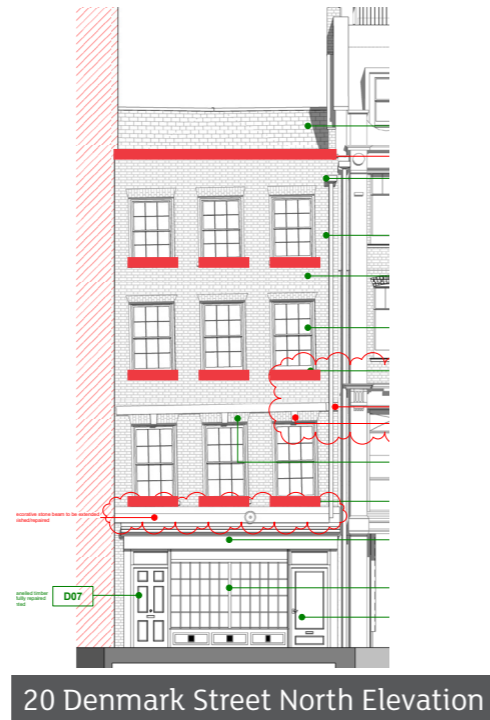
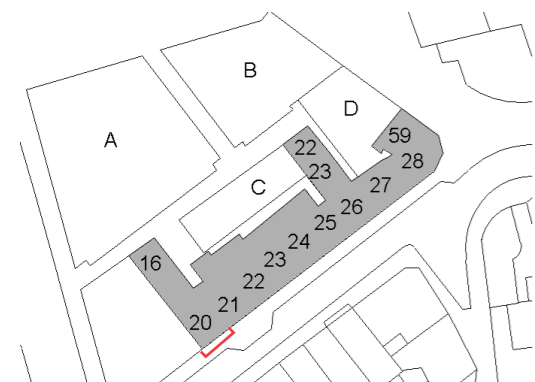
20 Denmark Street Lightwell

Existing Brickwork

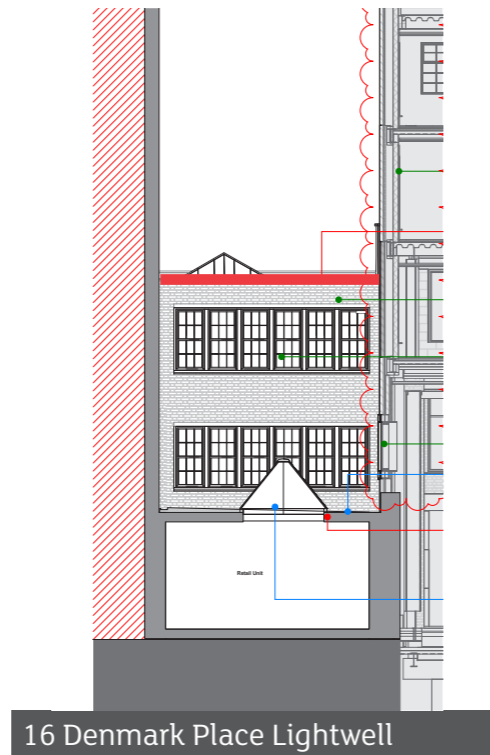
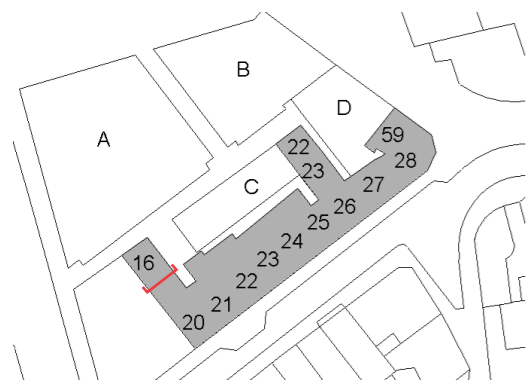
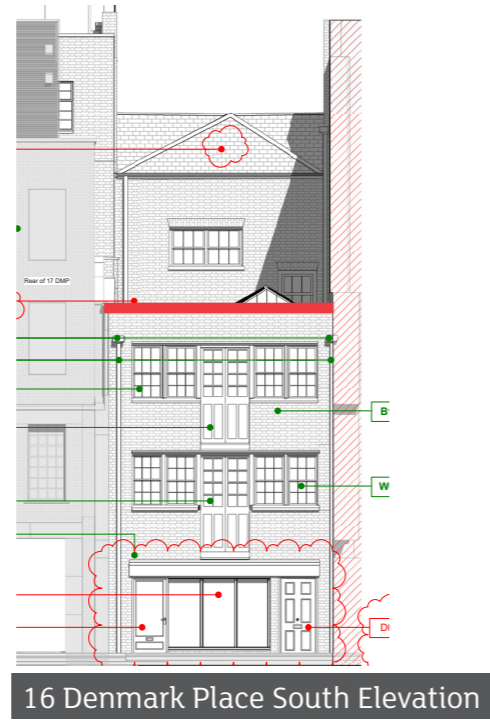
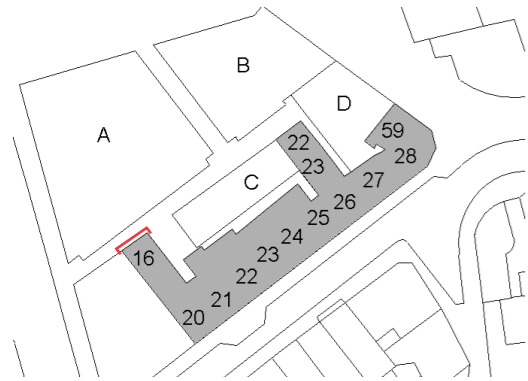
 Brickwork



 Stonework




 Stonework



portland stone - naturally



ALBION STONE

 Ref. No: AS/CE/MU05/CPR/012017		
Reference Standard: EN 771-6 2011 Product: Natural stone Masonry Units Denomination: Portland Jordans Whitbed, Limestone <i>Jordans Mine, Easton Street, Portland, Dorset, England</i> Mine Coordinates for Jordans: 50°32'52.4"N 2°26'28.0"W End Uses: Masonry units greater than 80mm thick manufactured in natural stone.		
Albion Stone plc, Easton Street, Portland, Dorset DT5 1BW		
Characteristics	Declared Values	Test Method
Dimensions	Project Specific Testing: NPD (No Performance Determined)	-
Dimensional Tolerances	Category D2	Visual
Configuration	Project Specific Testing: NPD (No Performance Determined)	-
Apparent Density	Mean Value: 2,198 MPa	BS EN 1936
Compressive Strength	Mean Value: 47.04 MPa Lowest Expected Value: 35.53 MPa	BS EN 1926
Flexural Strength	Mean Value: 5.88 MPa	BS EN 13161
Shear Bond Strength	Project Specific Testing: NPD (No Performance Determined)	-
Flexural Bond Strength	Project Specific Testing: NPD (No Performance Determined)	-
Porosity	Mean Value: 18.48%	BS EN 1936
Water Absorption coefficient by Capillarity	59.41g/m ² .sec ⁻²	BS EN 1925
Freeze/Thaw	168 freeze/thaw cycles, 33.7% reduction in strength	BS EN 13161
Reaction to Fire	Class A1	Without testing (see decision 96/603/EC, as amended)
Water Vapour Permeability	(Figures from EN 12524) 0.02 Wet 0.025 Dry	BS EN 12524

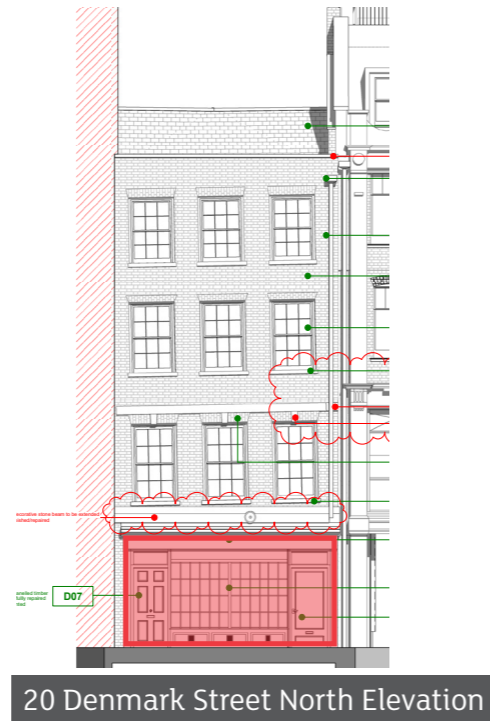
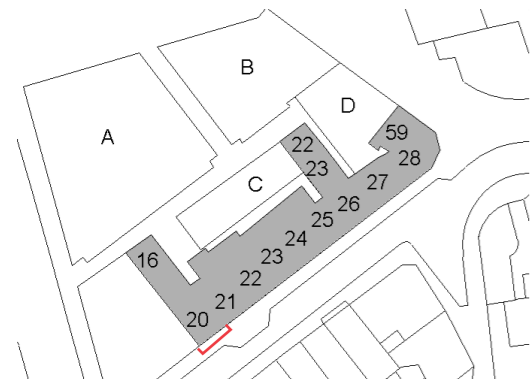
www.albionstone.com

t 01737 771772 e enquiries@albionstone.com

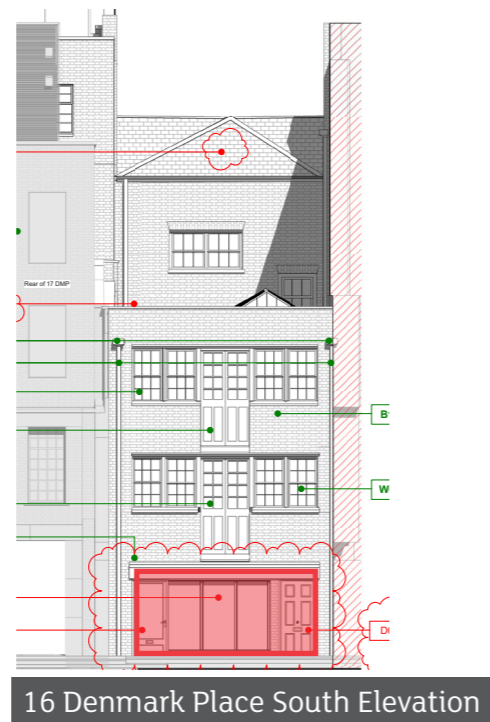
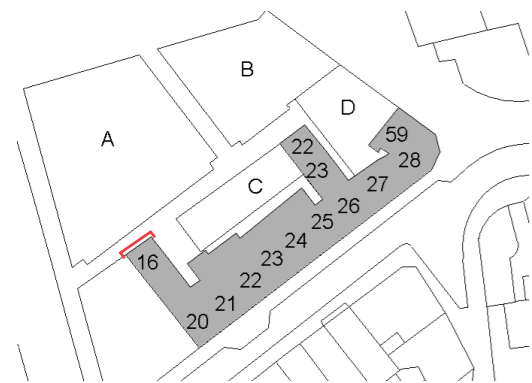
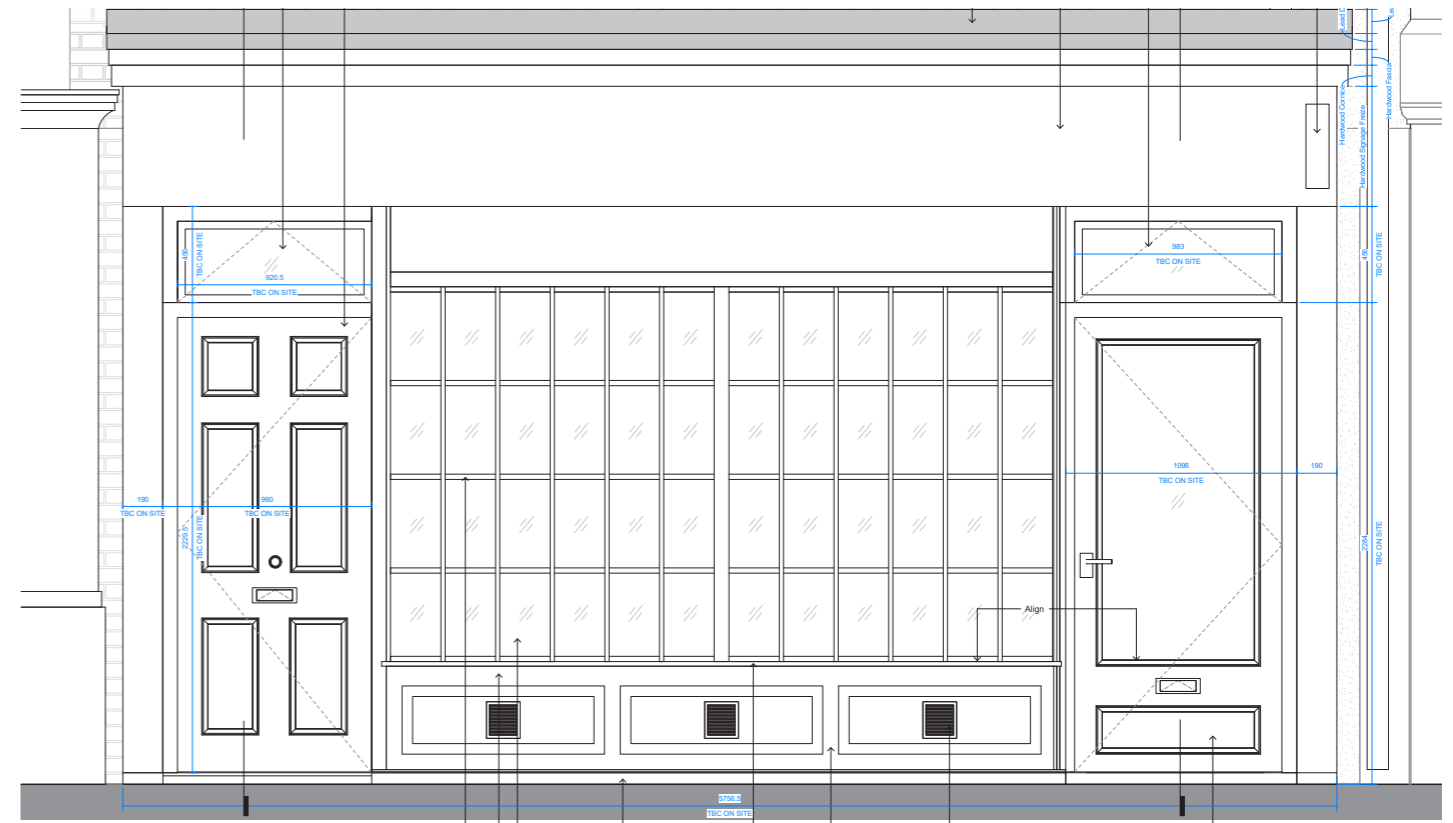
Shopfronts

Condition discharged under the reference 2018/5311/L

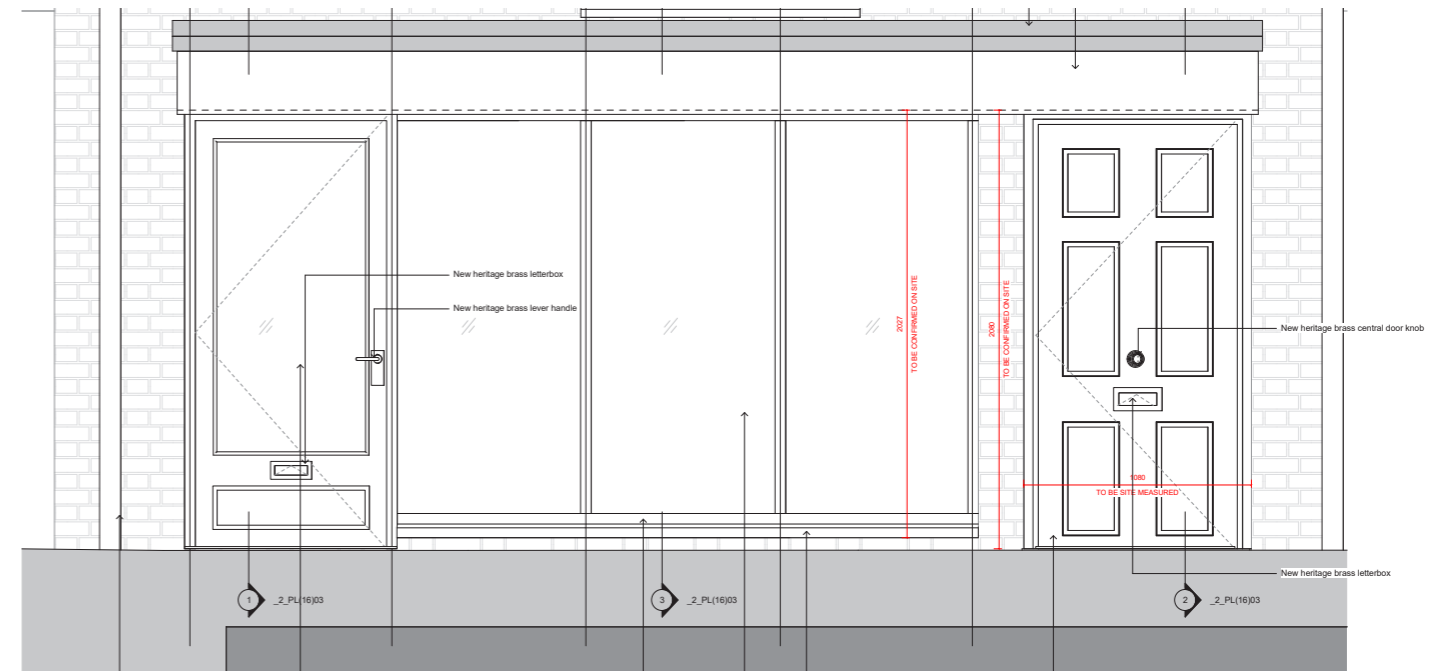
 Shopfronts



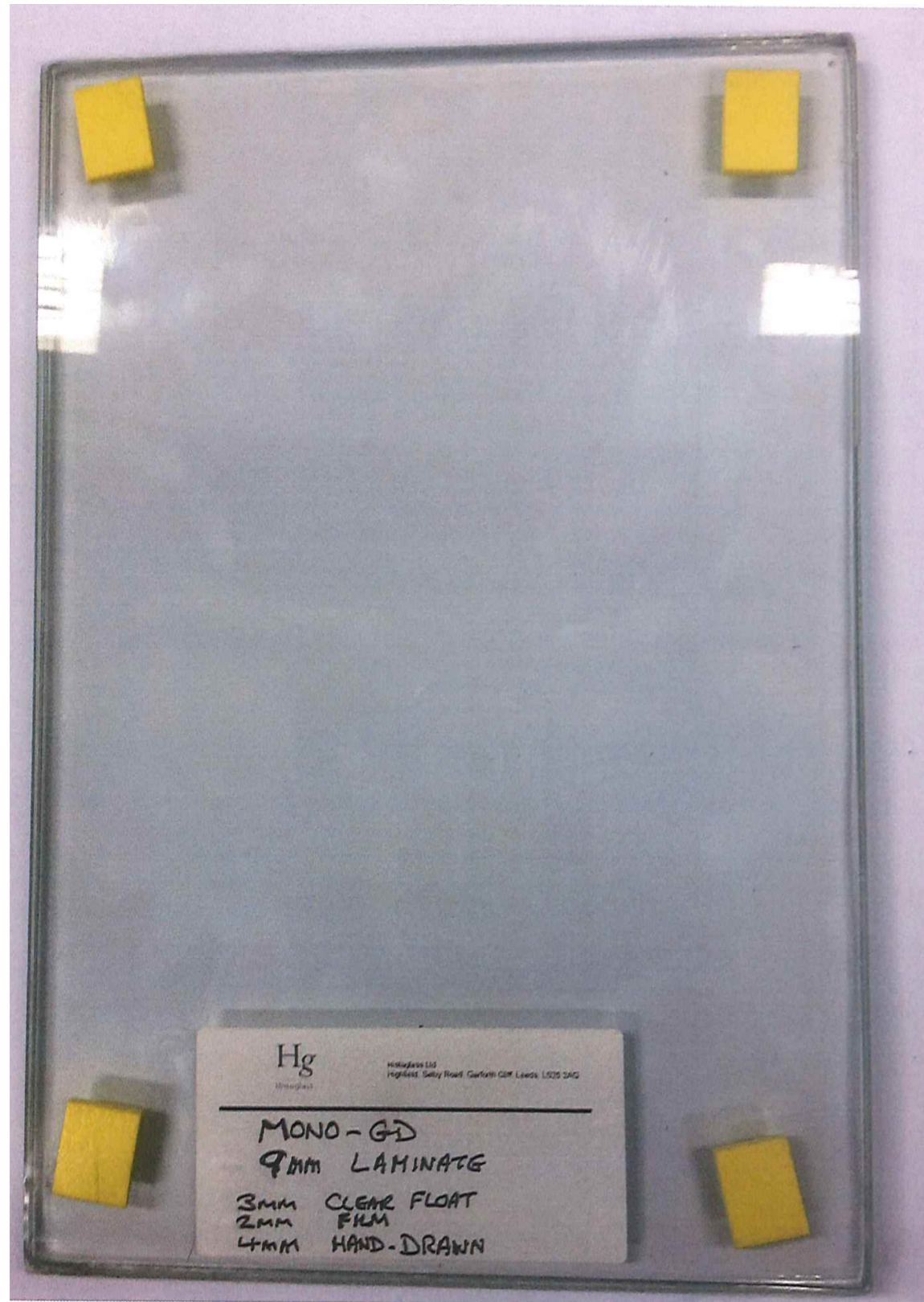
20 Denmark Street - Shopfront



16 Denmark Place - Shopfront



Glass

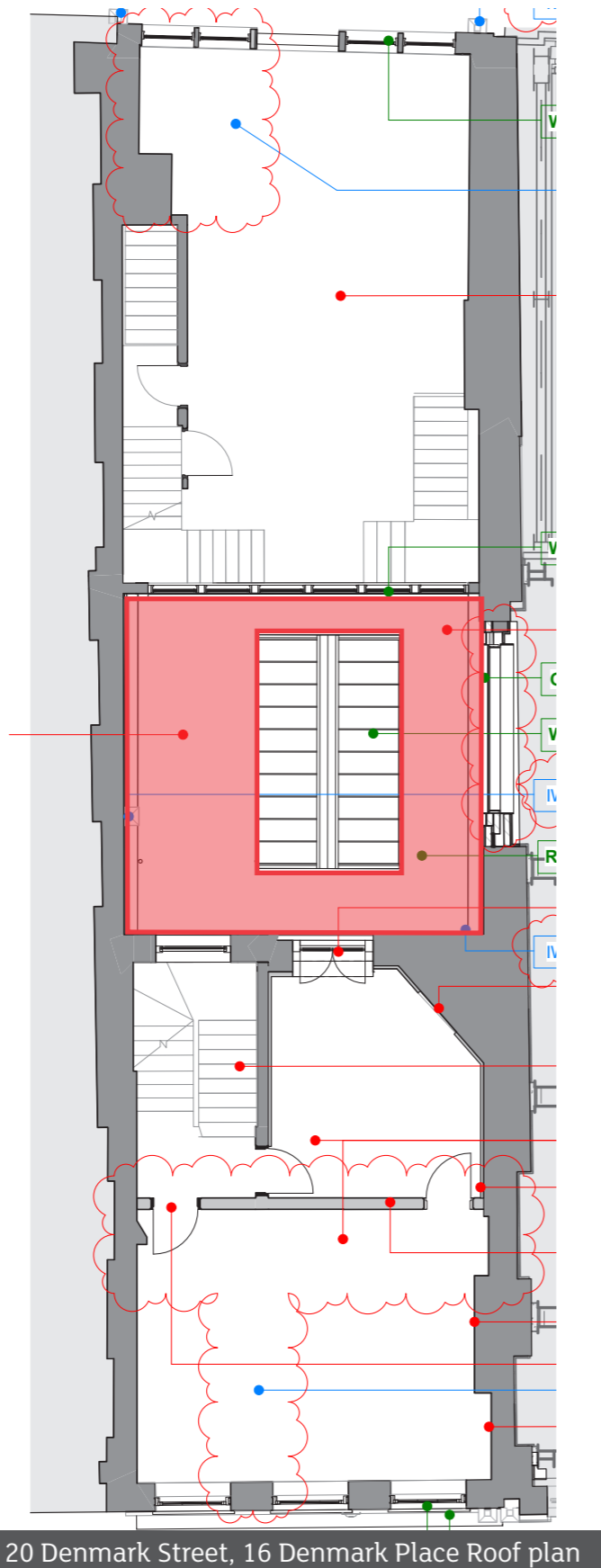


Frame Paint Colour

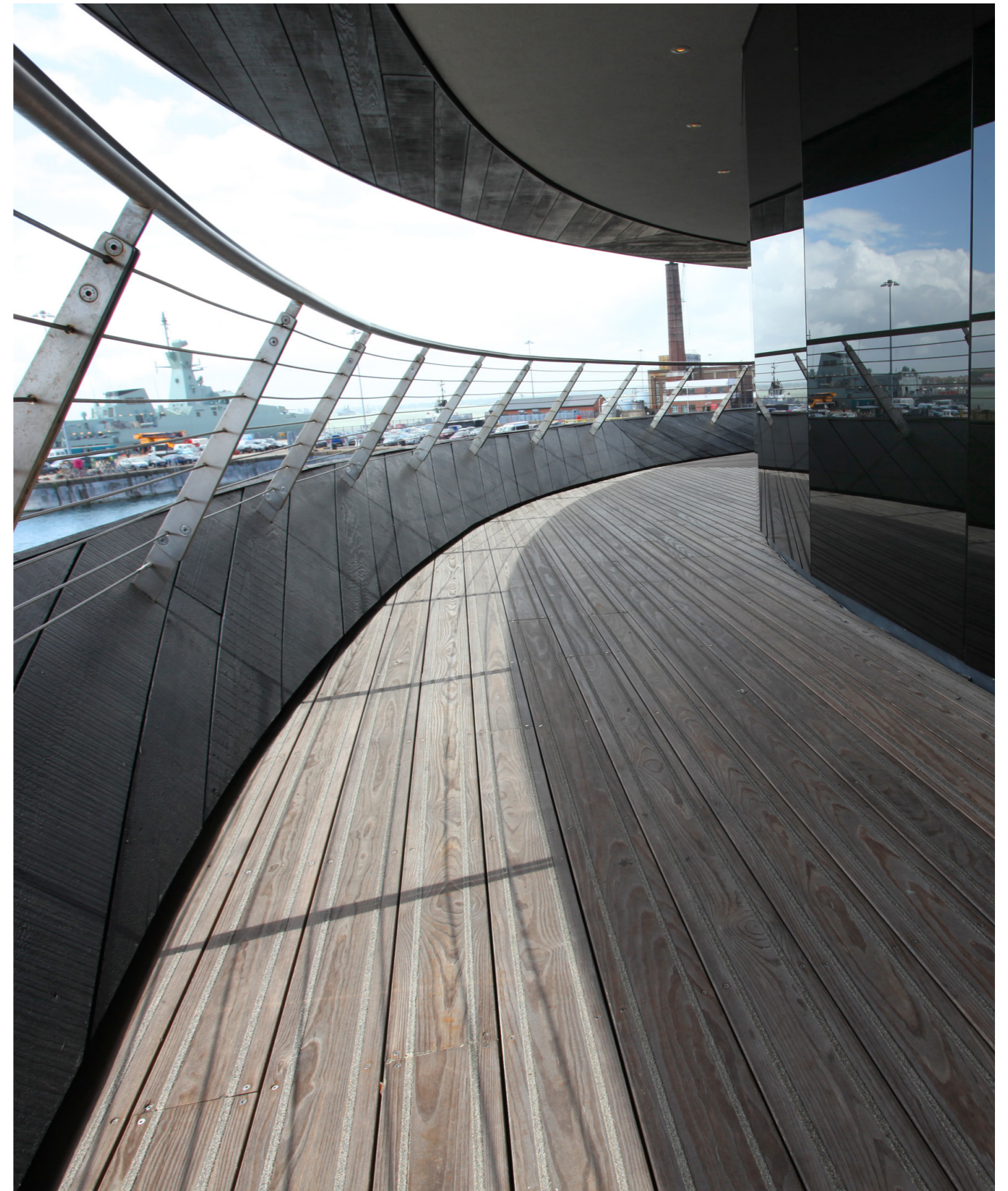


Timber Decking

 Timber Decking



20 Denmark Street, 16 Denmark Place Roof plan



Product datasheet
2019-01-09

Item no: 2131

Kebony Norge AS
+47 06125
www.kebony.com
info@kebony.com



Kebony Clear

Kebony Clear RAP terrace smooth w/side slits 22 x 142 mm

Product description

Kebony Clear Radiata products are produced from FSC® certified Radiata Pine modified with a bio-based liquid.

The patented Kebony technology permanently alters the wood cell structure to give a unique wood product with outstanding durability and no maintenance needs beyond normal cleaning.

Kebony Clear Radiata products have a primarily clear front surface and are treated through the board.



Note: As of the 2019 season, the side slits are made narrower and shallower. Some traditional fixing clips may no longer be suitable. Kebony H-clip can still be used.

Quality and appearance upon delivery

Profile	Rectangular with smooth surface
Dimension	22 x 142 mm
Length	For available lengths, please consult the 'Overview of available lengths' on www.kebony.com
Knots/Pitch pockets	Maybe visible and are a natural occurrence in wood
Cupping	Max 1 % of width
Crook	3-3,6 m: max 10 mm; 4,2-4,8 m: max 13 mm
Moisture	4-8 %
Cracks	Surface cracks and checks maybe visible
Wane	May occur on the back
NOTE	There may be defects on the back side. These will not affect the technical quality of the product.



The Kebony technology gives the wood a deep rich brown colour. After exposure to sun and rain the wood will develop a natural silver grey patina. Natural colour and grain variations will be visible both upon delivery and after installation. This will not influence the performance and durability of the wood.

Technical data (average values)

	Kebony	Untreated	Unit
Density (12 % mc)	670	480	Kg/m ³
Hardness (EN 1534)	4,2	2,5	Brinell
Characteristic bending strength (MOR - EN 408 / EN 384)	36,1	N/A	MPa
Stiffness (MOE - EN 408 / EN 384)	12,4	8,1	GPa
Max swelling (dry to wet, tangential direction)	4	8	%
Decay resistance (EN 350)	1	5	Durability class 1-5
Use class (EN 335)	3*	1**	

* Suitable for outdoor applications above ground

** Not suitable for outdoor applications

Documents / Certificates / Compliance

Kebony installation guide for decking - www.kebony.com
FSC CU-COC-813689 - www.fsc.org
Nordic Ecolabel 2086 0001 - www.nordic-ecolabel.org
EPD: NEPD-407-287-EN - www.epd-norge.no
Complies with EU Timber Regulation (EUTR)
AbZ: Z-9.1-863 - www.dibt.de



Environment

Kebony products are exempted from the EU's biocide directive (76/769/EEC).
Waste handling as ordinary wood.

Disclaimer

Kebony products will change in appearance when exposed to rain and sun. Colour changes and surface cracks will occur due to natural weathering. The manufacturer cannot be held liable for any such variations in colour and surface appearance. This will not influence durability and overall performance of the product.

This data sheet applies for the original profile – any alterations may influence the technical performance of the product.

Kebony is continuously working on product development. Information in this datasheet may be changed without further notice.