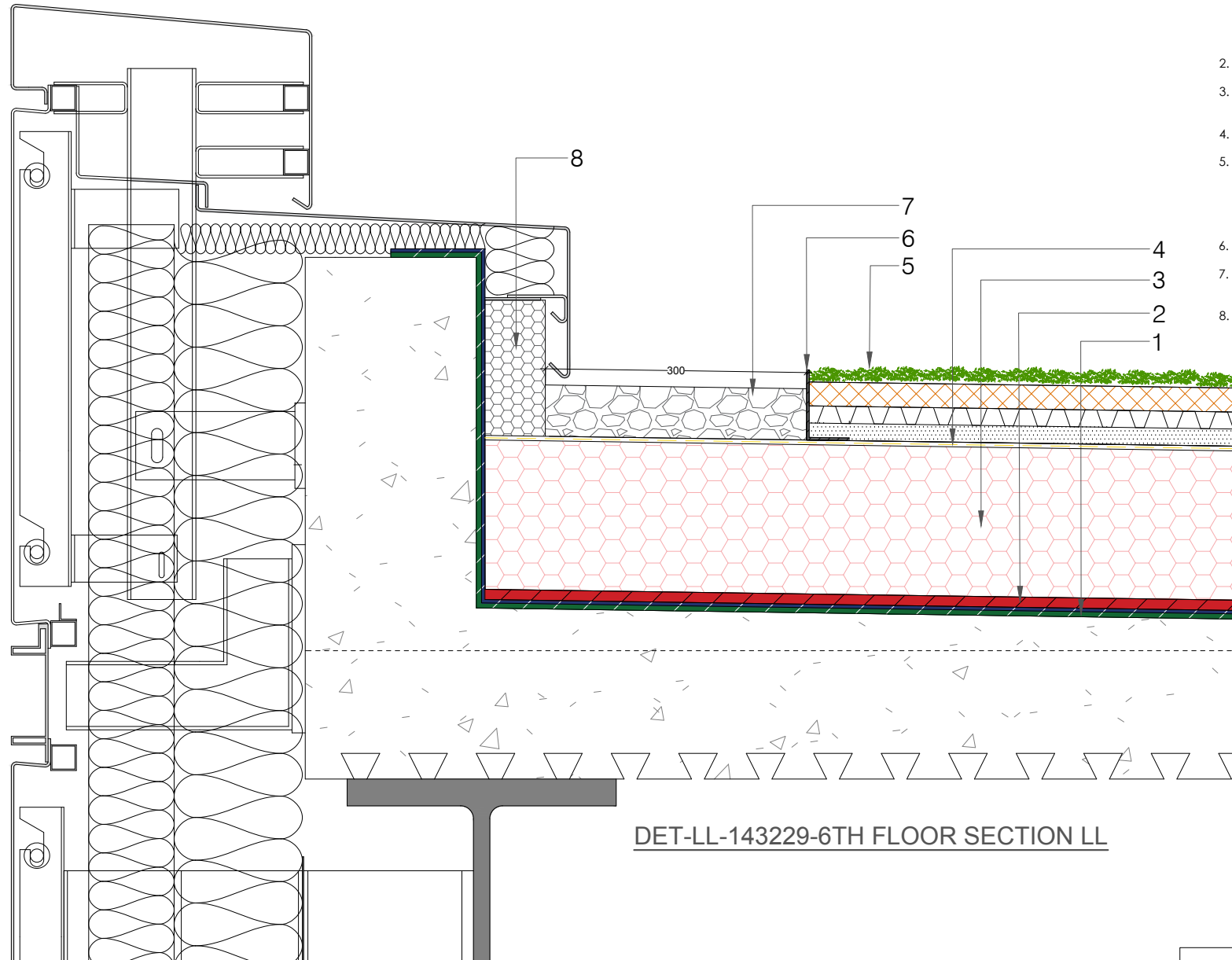
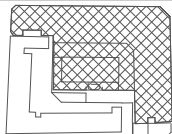


1. 10mm GuaraTEC Waterproofing System  
(4mm GuaraFELT PS Protection Sheet,  
3mm GuaraTEC Self Healing Bitumen,  
GuaraFLEECE,  
3mm GuaraTEC Self Healing Bitumen,  
GuaraPRIME)
2. GuaraFLEX P 12mm Mastic Asphalt protection layer
3. 180mm Efyos XPS Insulation Lambda 0.036w/mk  
(achieves 0.18w/m2k 'U' Value)
4. Geotextile Filter Layer
5. Lightweight Sedum Blanket System:  
-20mm Filter-wrapped non-retentive drainage layer  
-20mm Light-weight mineral fibre wool substrate layer  
-30mm Sedum blanket, Depth = 70mm, Saturated  
weight = 40 L/m<sup>2</sup>
6. 2mm Aluminum Edge Retaining Angle
7. 20-40mm Stone Washed Ballast, 60mm depth  
min 300mm width around perimeter upstands
8. Upstand Insulation by others



**DET-LL-143229-6TH FLOOR SECTION LL**

ARCHITECTS REFERENCE: P4PBT-STW-AFA-SL-SEC-A31-143229



REFERENCE INFORMATION SCHEDULE

University College London Hospitals **NHS**  
NHS Foundation Trust



Main Contractor - Bouygues UK  
Beckett House  
1 Lambeth Palace Rd  
Lambeth, London SE1 7EU  
Tel: 020 7401 0020

ORIGINATOR



GUARANTEED ASPHALT  
GUARANTEED HOUSE, 2 MERCURY WAY,  
LONDON, SE14 5ER  
WWW.GUARANTEED ASPHALT.COM  
T 0207 2776 773

SCALE @A3

N/A

FIRST ISSUE DATE

28.09.2018

CAD FILE NAME - REVISION

P4PBT-GTA-ALL-06-DET-3.03-000052

PROPOSED STATUS

S4 FOR APPROVAL

B	23.01.2019	UPDATED TO S4 FOR APPROVAL	HN	DB	DB
A	28.09.2019	FIRST ISSUE	HN	DB	DB
REVISION	DATE	DESCRIPTION	DRW	CHK	APP
<b>DRAWING TITLE</b>					
<b>UCLH Phase 4 &amp; P4PBT</b>					
<b>Roof Package - Detail Through 6th Floor - L</b>					
PROJECT	ISSUER	AREA	LEVEL	TYPE	TRADE
P4PBT	GTA	ALL	06	DET	3.03
SEQUENCE	REVISION				
000052	B				