

NOTES

THIRDWAY INTERIORS DO NOT ACCEPT LIABILITY FOR ANY ERRORS AND OMISSIONS ARISING FROM THE PREPARATION OF BASE BUILD DRAWINGS WHICH ARE DERIVED FROM ORIGINAL MATERIAL PROVIDED BY OTHERS.

ALL DISCREPANCIES ARE TO BE REPORTED TO THIRDWAY INTERIORS.

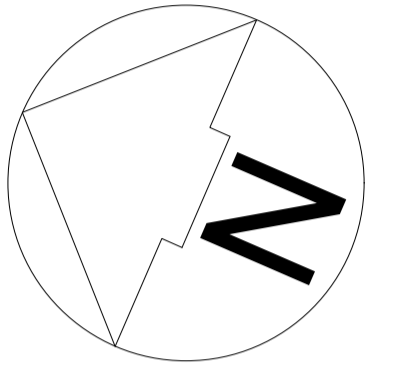
GRID LINES ARE FOR REFERENCE PURPOSES ONLY.

ALL DIMENSIONS TO BE VERIFIED BY CONTRACTOR ON SITE PRIOR TO ANY WORKS COMMENCING.

DO NOT SCALE FROM THIS DRAWING.

THIS DOCUMENT IS THE PROPERTY OF THIRDWAY INTERIORS. COPYRIGHT IS RESERVED BY THEM, AND THE DRAWING IS ISSUED ON THE CONDITION THAT IT IS NOT COPIED, REPRODUCED OR RETAINED BY, NOR DISCLOSED TO ANY UNAUTHORISED PERSON, EITHER WHOLLY OR IN PART, WITHOUT THE CONSENT IN WRITING FROM THIRDWAY INTERIORS.

© THIRDWAY INTERIORS



STATUS

- Approval / Comment**
- Building Control**
- Contract**
- Construction**
- As-Built**

REVISION DETAIL

REV	DETAIL	BY	DATE
A	ISSUE FOR PLANNING	RS	10/12

CLIENT

JOHN ADAM FASHION

PROJECT ADDRESS

**MODE, CENTRIC CLOSE
OVAL ROAD
CAMDEN, LONDON.
NW1 7EP**

PLANNING APPLICATION

DRAWING TITLE

**PROPOSED
GROUND FLOOR PLAN**

DWG NO: **19136 PLN 08**

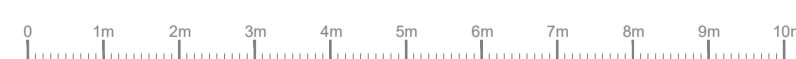
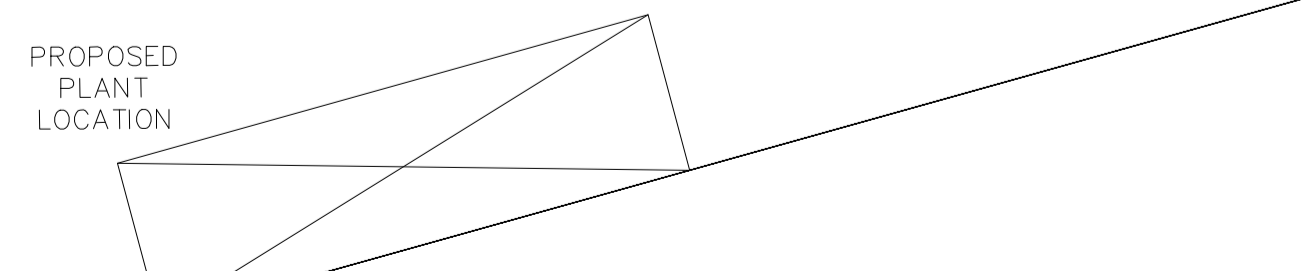
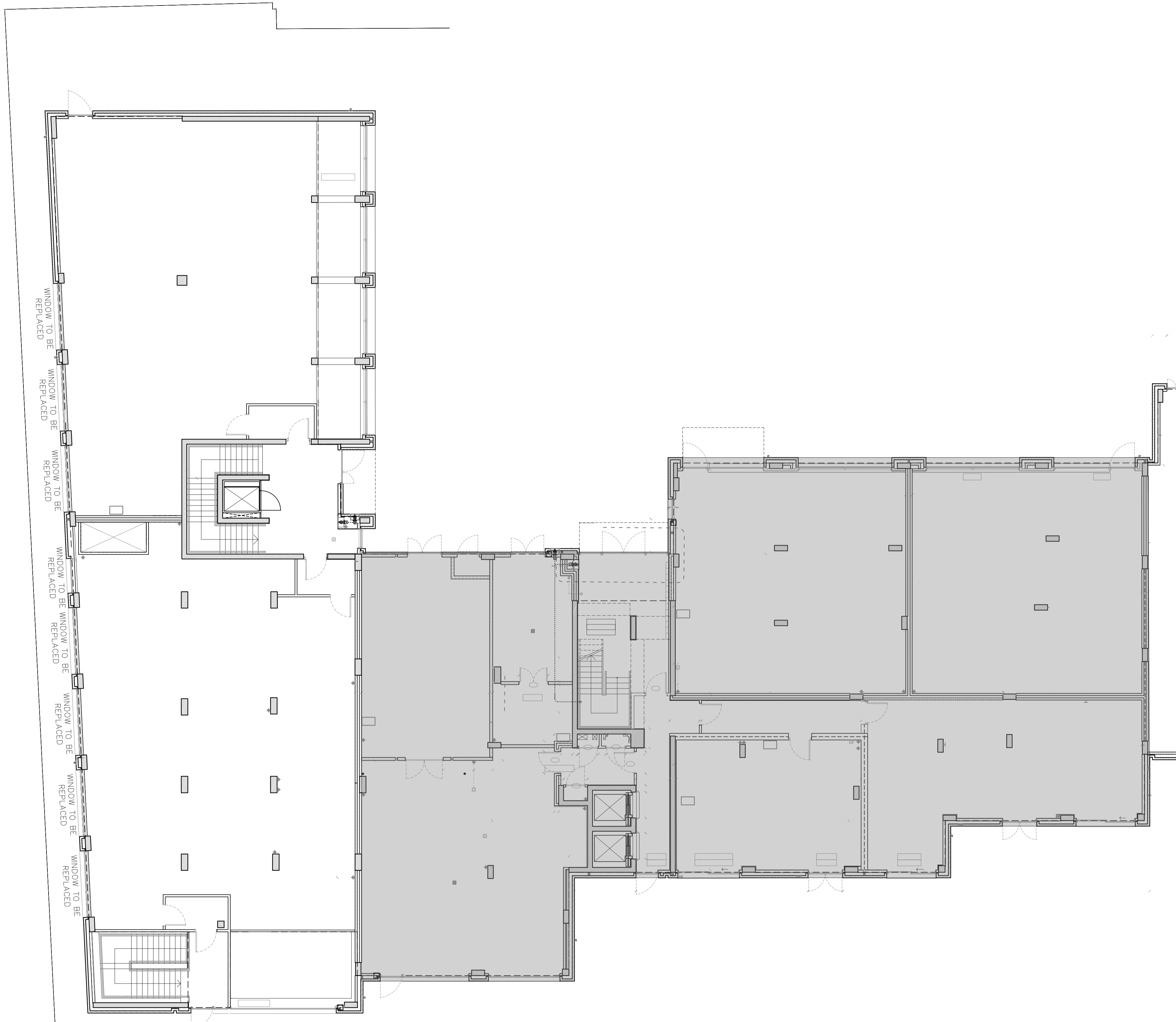
REVISION: **C**

SCALE @A1: **1:100**

DATE: **10/12/19**

DRAWN BY: **RS**

CHECKED BY: **TL**



01 GROUND FLOOR PLAN - PROPOSED
Scale: 1:100



THIRDWAY