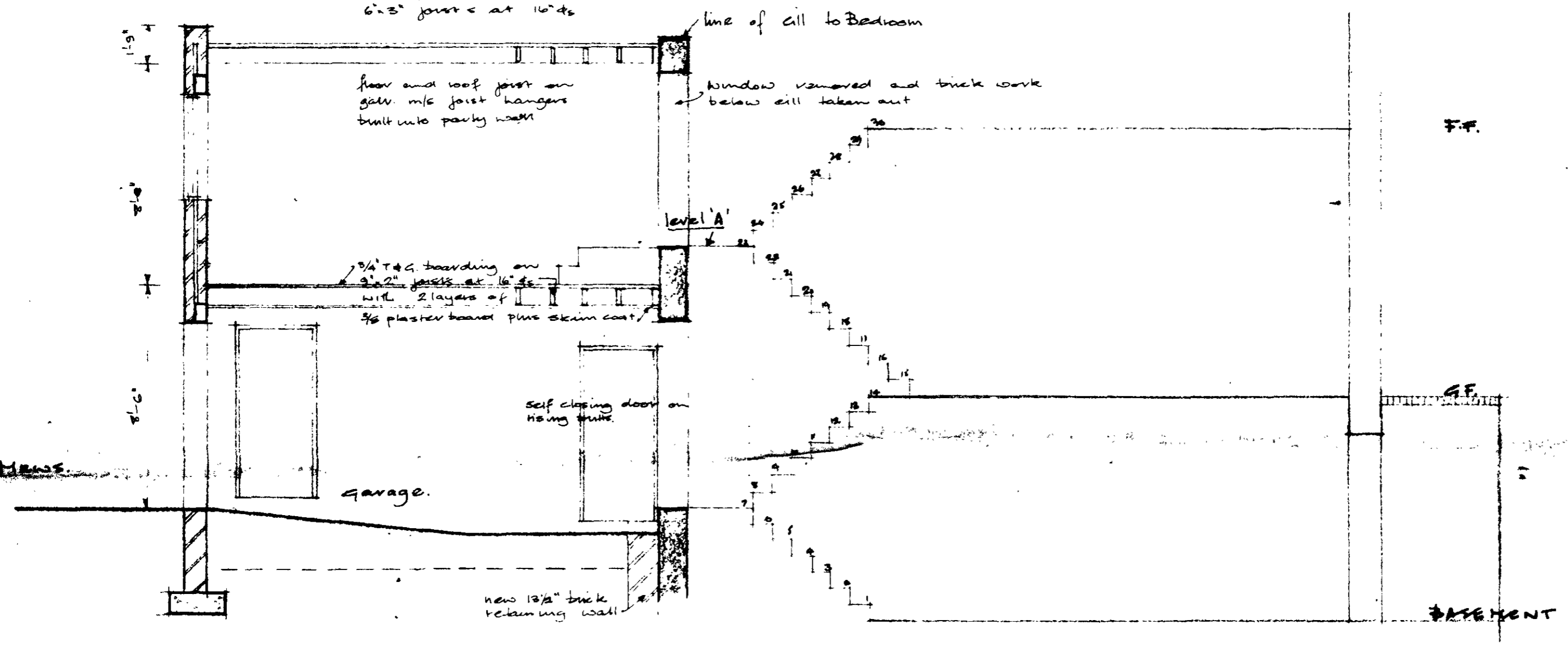
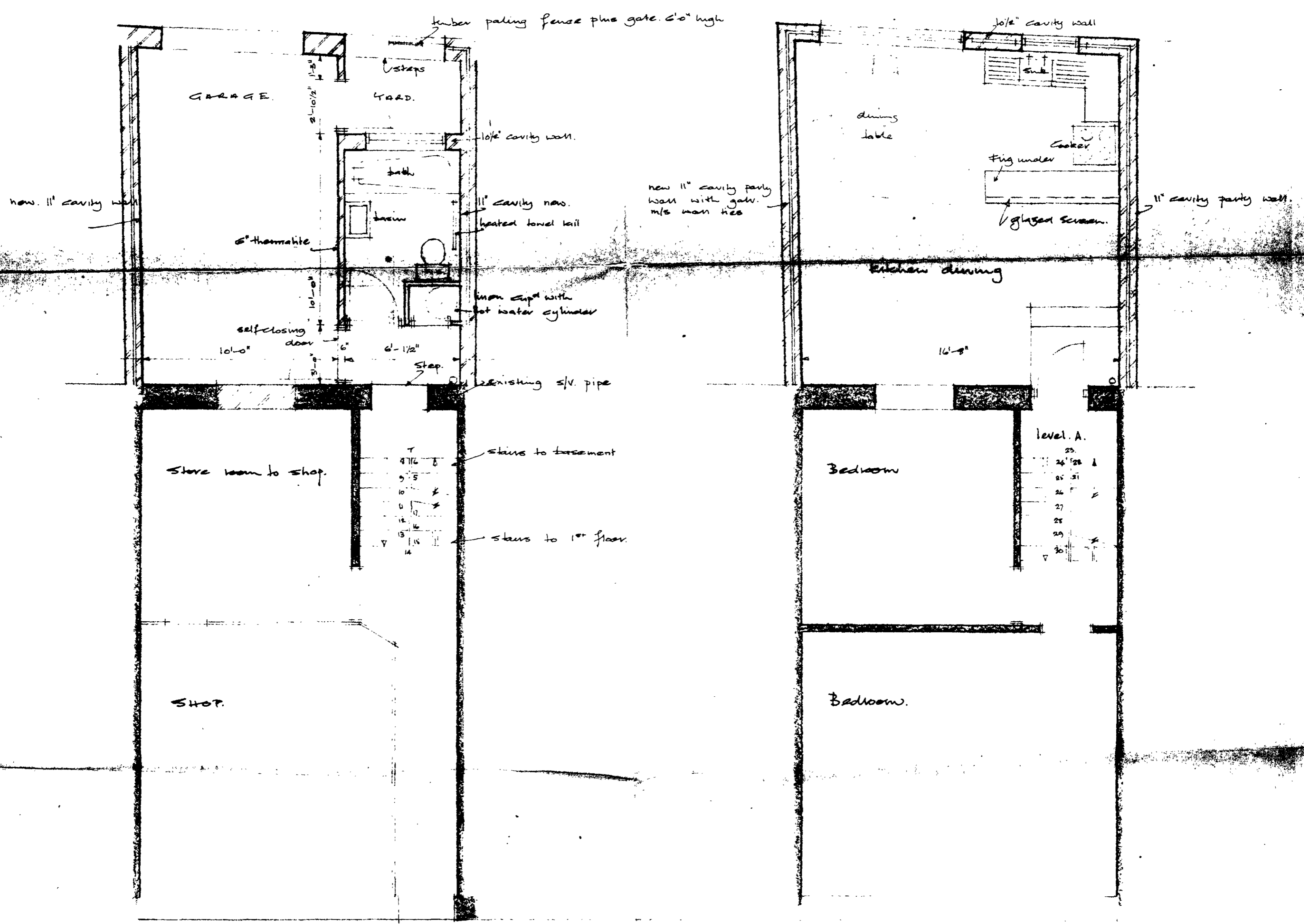


Stone chipping  
3 layers asbestos based felt on  
1/2" screed on 2" wood wool on  
6" x 3" joists at 16" ds



LONGITUDINAL SECTION



GROUND FLOOR PLAN

FIRST FLOOR PLAN

ARCHITECTS, L.L.C.  
No. 1986V  
13 DEC 1962

EXTENSION AT REAR OF 112 CLEVELAND STREET N.I. FOR MR. BAKER Esq.  
Scale 1/4" to 1'-0"