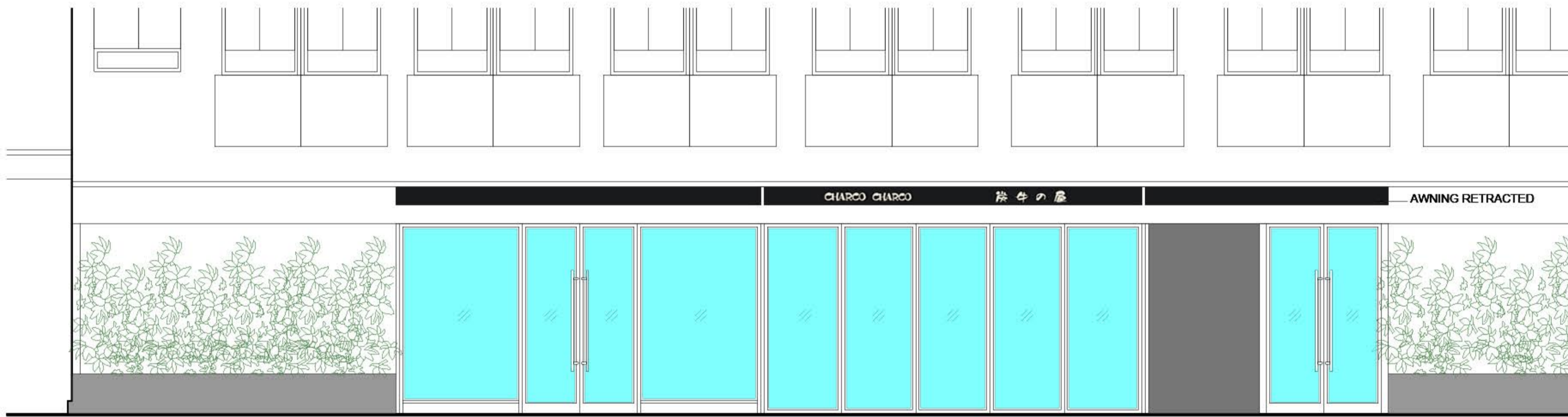
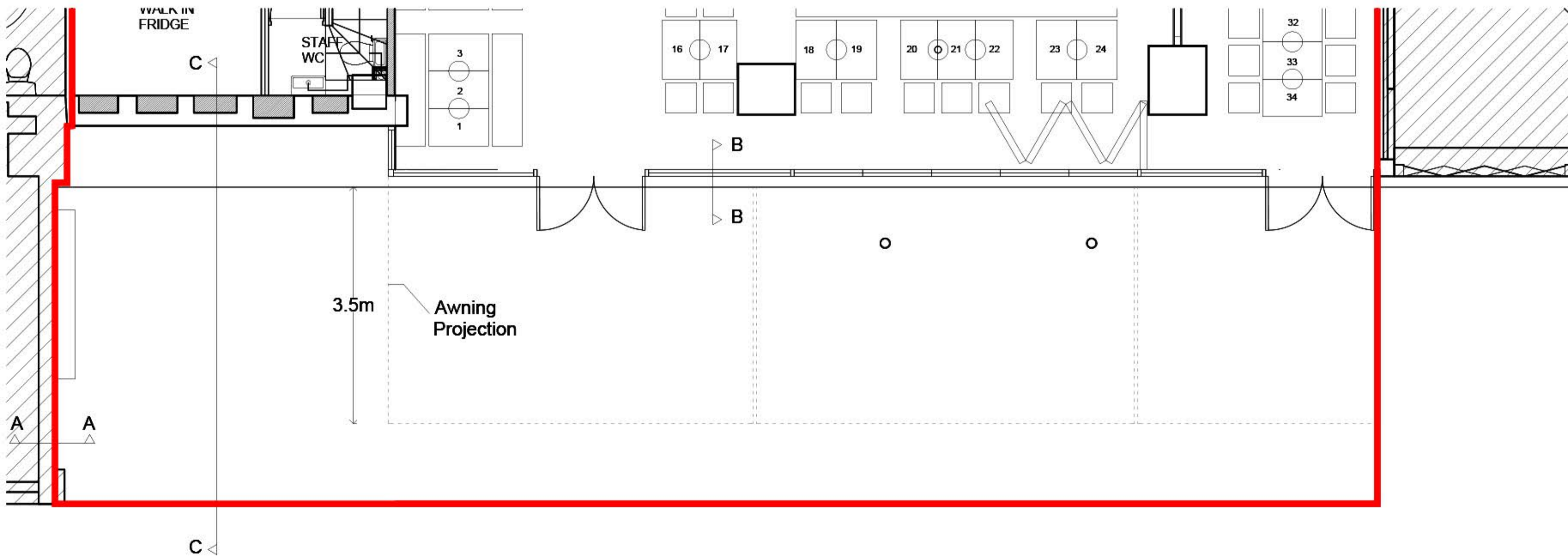


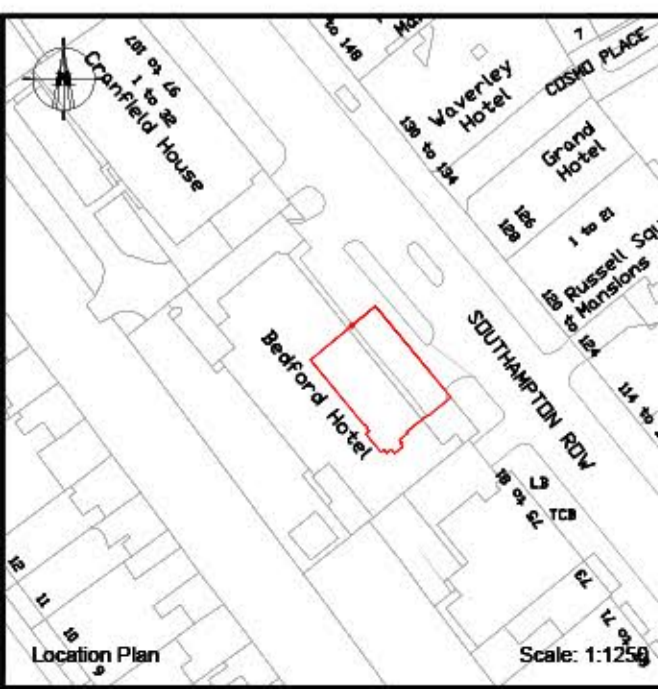
PROPOSED (awning projected)
SCALE 1:50



PROPOSED (awning retracted)
SCALE 1:50



PROPOSED GROUND FLOOR PLAN
SCALE 1:50



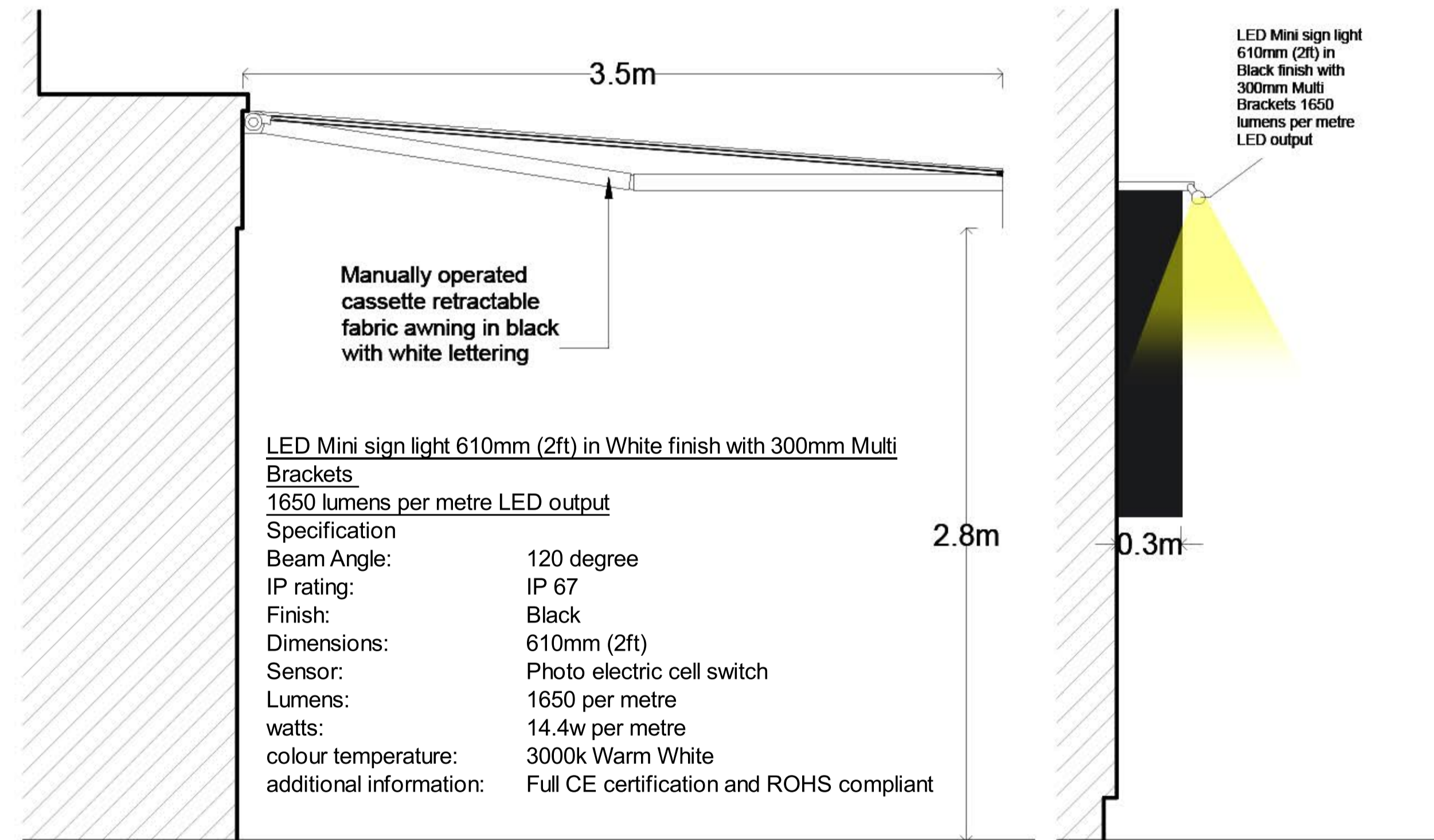
SOUTHAMPTON ROW

Black acrylic panel with Charco Charco logo



SECTION C - C (Signage)
PROPOSED

SCALE 1:20



SECTION B-B (awning projected)
PROPOSED

SCALE 1:20

SECTION A - A (Signage)
PROPOSED

SCALE 1:20

Manually operated cassette retractable fabric awning in black with white lettering

LED Mini sign light 610mm (2ft) in White finish with 300mm Multi Brackets
1650 lumens per metre LED output
Specification
Beam Angle: 120 degree
IP rating: IP 67
Finish: Black
Dimensions: 610mm (2ft)
Sensor: Photo electric cell switch
Lumens: 1650 per metre
watts: 14.4w per metre
colour temperature: 3000k Warm White
additional information: Full CE certification and ROHS compliant

LED Mini sign light 610mm (2ft) in Black finish with 300mm Multi Brackets 1650 lumens per metre LED output



REV	DESCRIPTION	DATE	BY
A	MINOR AMENDMENTS	05-08-2019	AG

address 83-89 SOUTHAMPTON ROW, LONDON WC1B 4HD	date MAY 2019
project description PROPOSED SIGNAGE TO RESTAURANT AND AWNINGS	scale 1:50 & 1:20 (atA1)
drawing title PROPOSED FLOOR PLANS, ELEVATIONS AND SECTIONS	dwn by A.G
	drg.no REV. 193-502A
BLUELINE	
ARCHITECTURAL CONSULTANTS LIMITED	
20 THE TRAMWORKS, HATHERLEY MEWS, LONDON E17 4QP	t: 020 8521 0158 e: blueinelondon@gmail.com