

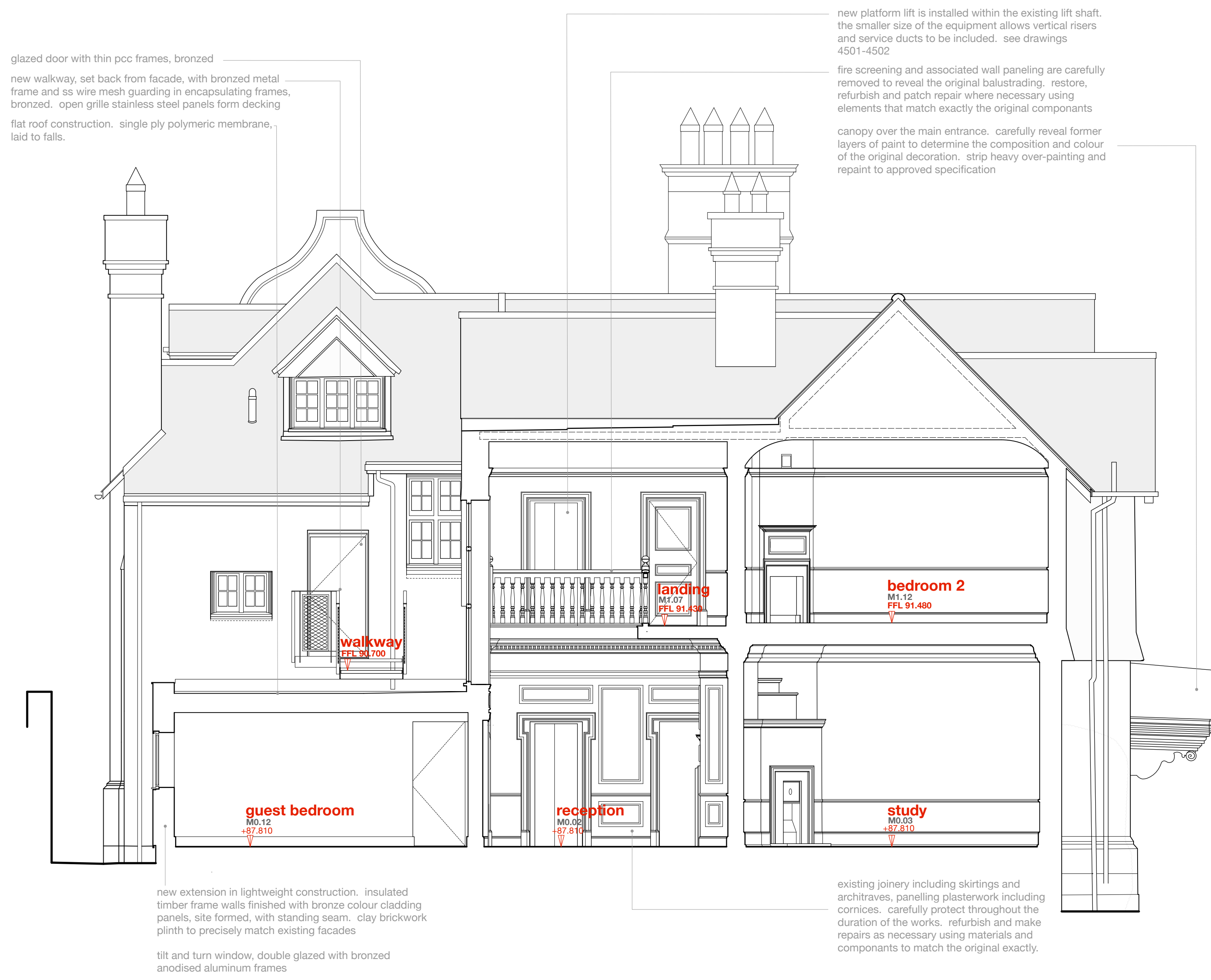
© BOWKER SADLER PARTNERSHIP LIMITED  
 THIS DRAWING IS THE SUBJECT OF COPYRIGHT WHICH VESTS IN BOWKER SADLER PARTNERSHIP LIMITED. IT IS AN INSTRUMENT OF COPYRIGHT TO REPRODUCE THIS DRAWING BY ANY MEANS, INCLUDING ELECTRONIC, WITHOUT THE EXPRESS WRITTEN CONSENT OF BOWKER SADLER PARTNERSHIP LIMITED WHICH RESERVES ALL ITS RIGHTS.  
 BOWKER SADLER PARTNERSHIP LIMITED ASSERTS ITS RIGHTS TO BE IDENTIFIED AS THE AUTHOR OF THIS DESIGN.  
 REPORT ERRORS & OMISSIONS TO ARCHITECT  
 CHECK ALL DIMENSIONS ON SITE  
 DRAWING TO BE READ IN CONJUNCTION WITH THE HEALTH AND SAFETY PLAN AND ALL RELEVANT RISK ASSESSMENTS

Survey drawings are kindly provided by Mazon Hughes Land Surveys Ltd and are assumed to accurately describe the existing buildings, services and external spaces.

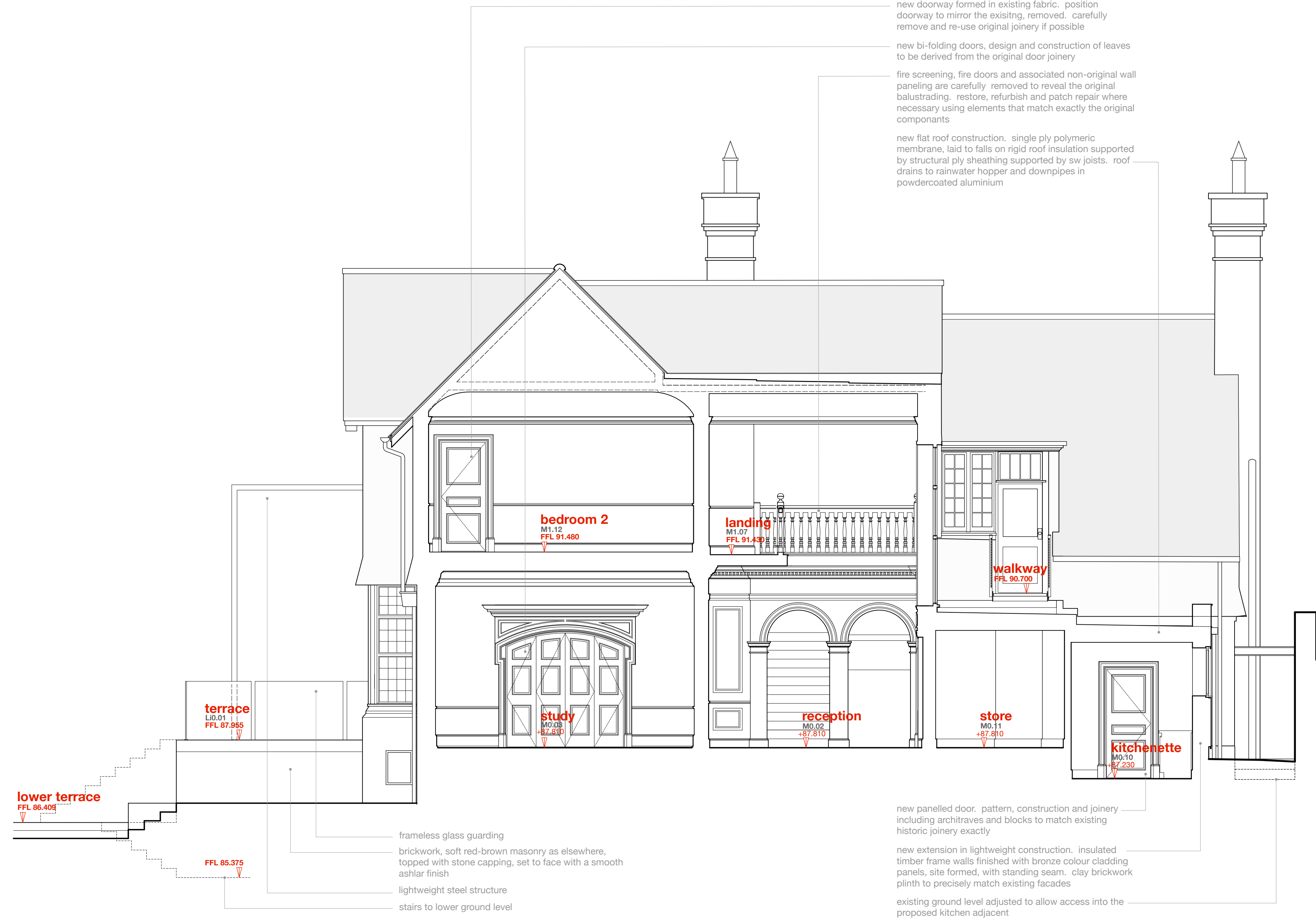
**KEY**  
 Access to be demolished and removed

**Features**

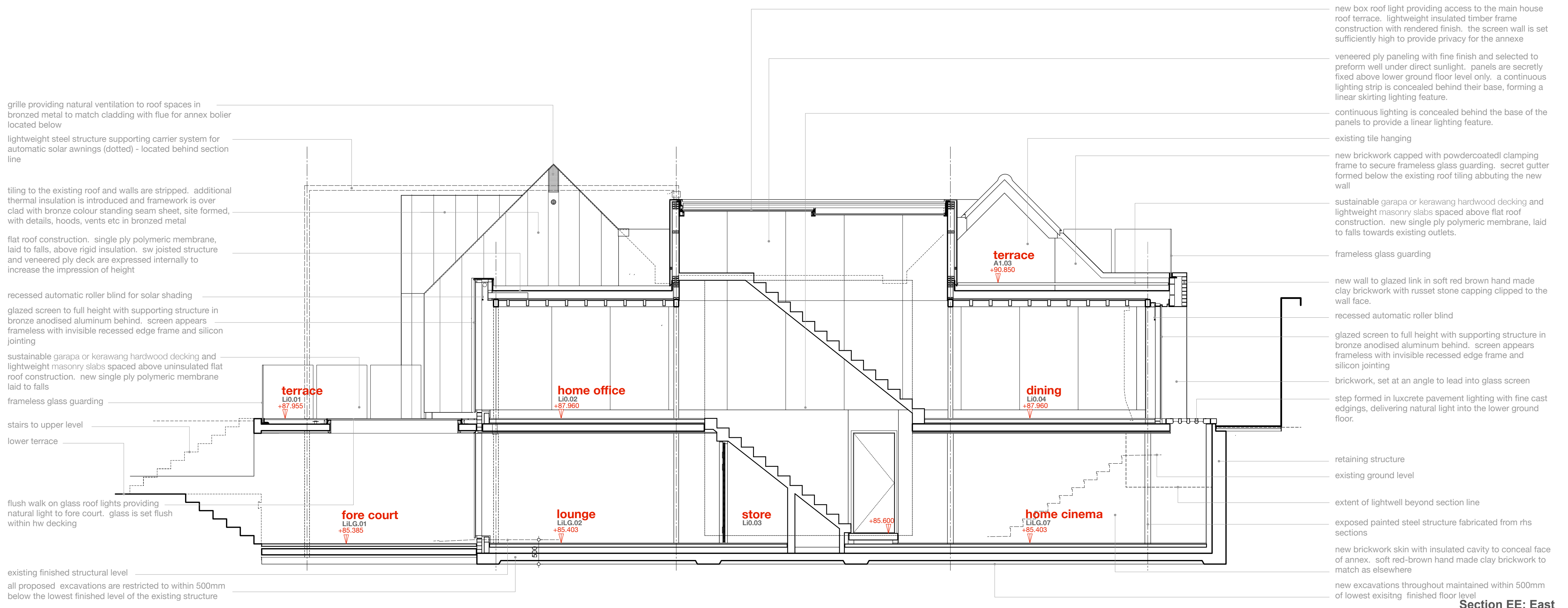
- windows**
- bhc bottom hung timber casement window
  - thc top hung timber casement window
  - shc side hung casement
  - vss vertical sliding sash timber window
  - tt tilt and turn window
  - tl fixed light timber window
  - rl roof light (flat roof)
  - vrt velux style roof light pitched roof
  - h ceiling hatch
  - sd sliding door
  - pd pivot door
  - f wall / roof mounted flue to gas boiler / gas fire, terminal colour is black
  - abx extract terminal as air brick, such as rytons extrude, colour coated to suit brickwork
  - brx mushroom extract terminal for flat roof
  - prx fabricated lead pitched roof vent as extract terminal, such as provided by o'toan sheet lead fabrications ltd



Section CC: West



Section DD: East



Section EE: East

REV	DATE	DRN	CHKD

**PROJECT**  
 The Hoo, 17 Lyndhurst Gardens, Hampstead, London  
 Resiting a Grand Victorian House to Private Domestic Accommodation, NW3 5NU

**CLIENT**  
 Mr and Mrs Yu  
 REPRESENTED BY  
 JAGA Developments (London)

**DRAWING**  
 Sections CC-EE  
 as Proposed

SCALE	SHEET SIZE	DRAWN	CHECKED	DATE
1:50	A0	GMcG		Oct 2019

**BOWKER SADLER ARCHITECTURE**  
 A: Hathelrow House, Hathelrow, Romley, Stockport SK6 3DY  
 T: 0161 406 7333  
 E: info@bowker-sadler.co.uk  
 W: www.bowker-sadler.co.uk

DWG No.	DRAWING No.	REVISION
19013	1151	A

STATUS  
 FOR PLANNING