

Third Floor

W15, W16: Fitting Type A

Bedroom to the rear: Windows W15 and W16 to have secondary glazing Type A fitted to the plaster wall



W17: Fitting Type A

Landing: Window W17 to have secondary glazing Type A fitted to the existing later addition timber surrounds



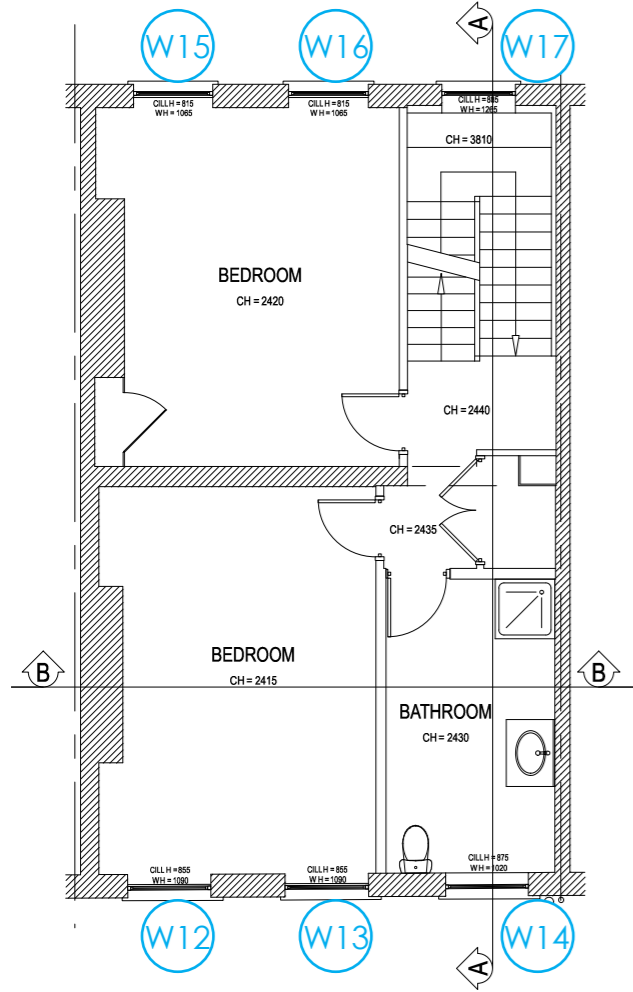
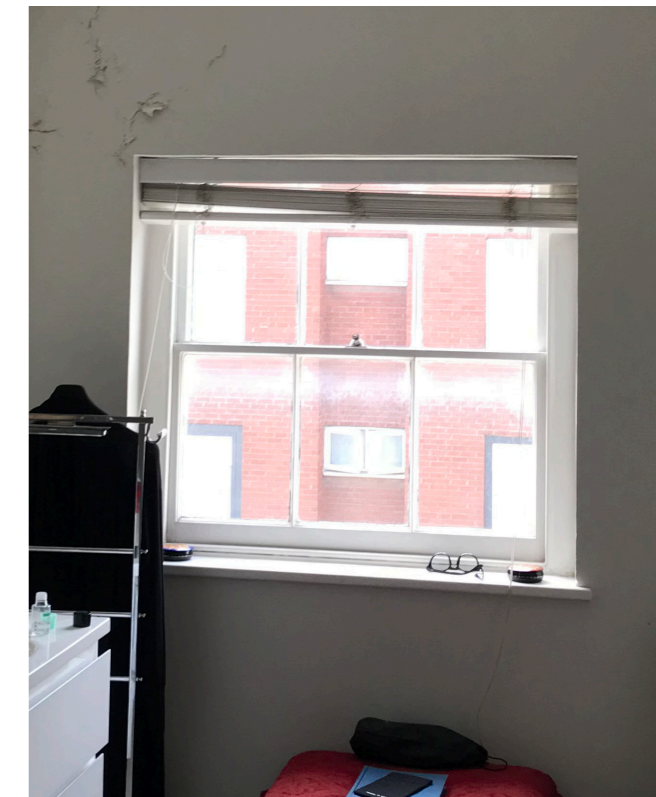
W12, W13: Fitting Type A

Bedroom to the front: Windows W12 and W13 to have secondary glazing Type A fitted to the plaster wall



W14: Fitting Type A

Bathroom: Window W14 to have secondary glazing Type A fitted to the plaster wall



THIRD FLOOR PLAN



Type A

