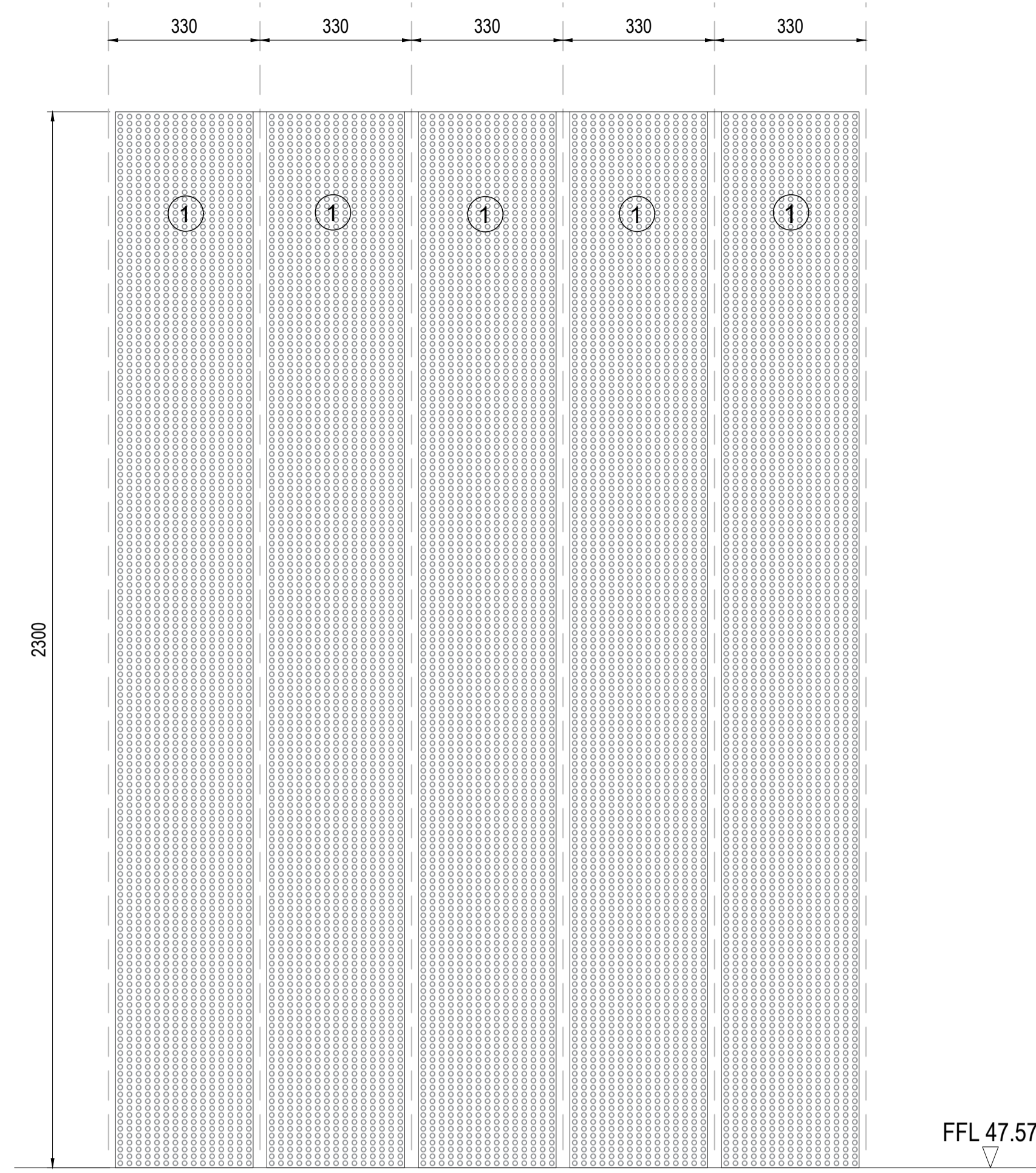
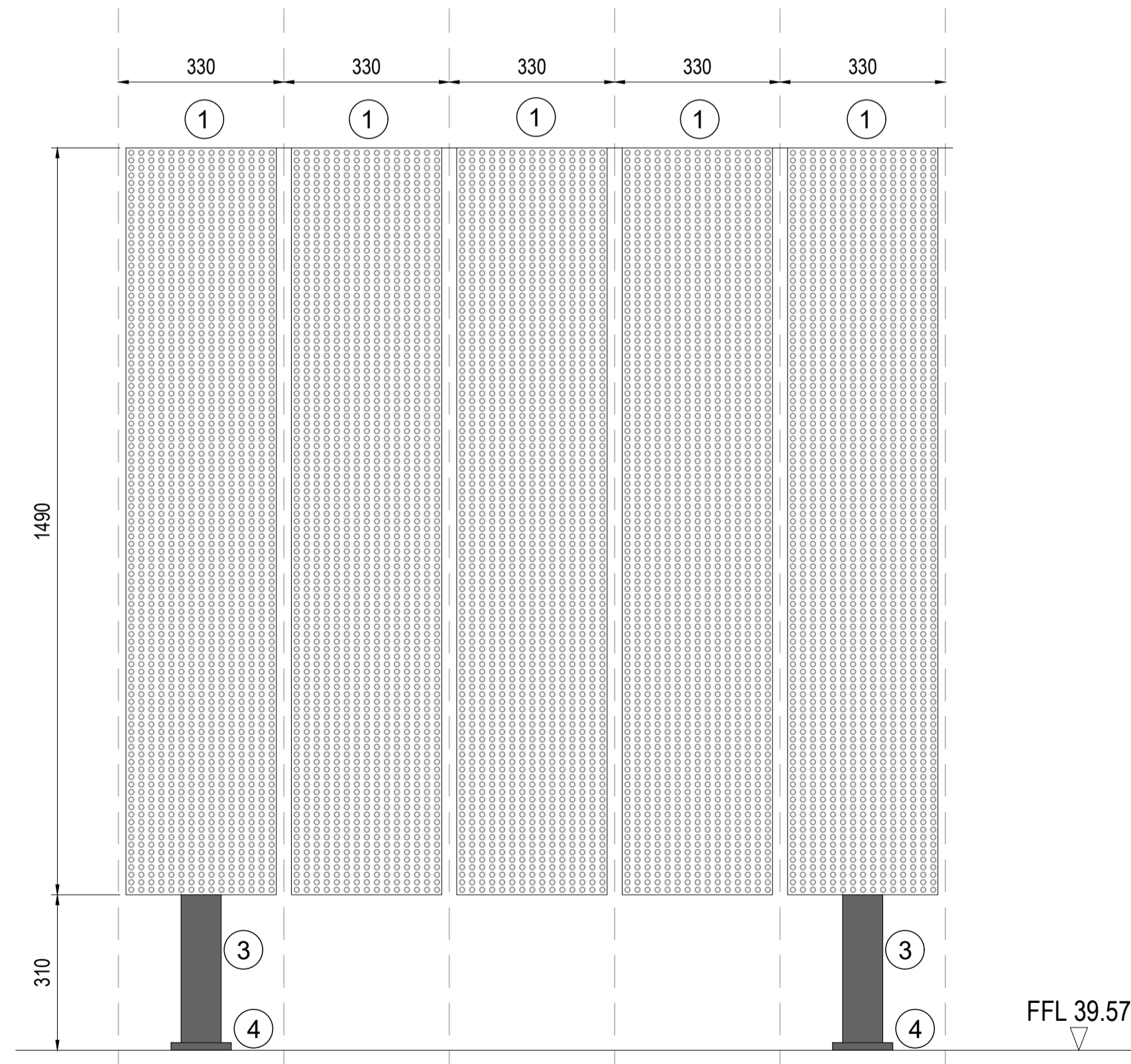


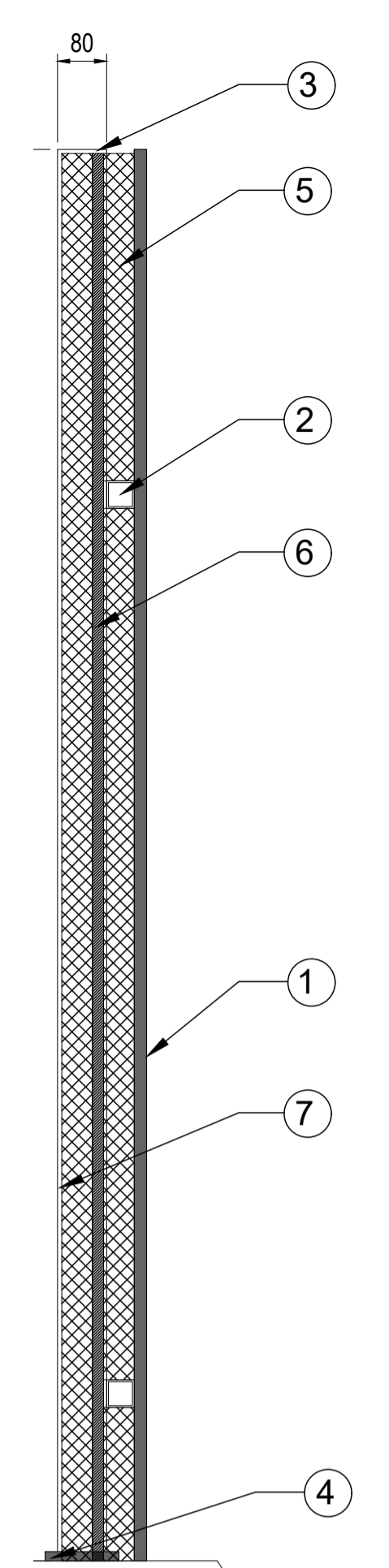
dE04 | Envelope Details: Roof enclosure
01 | Roof plan. Scale 1/100



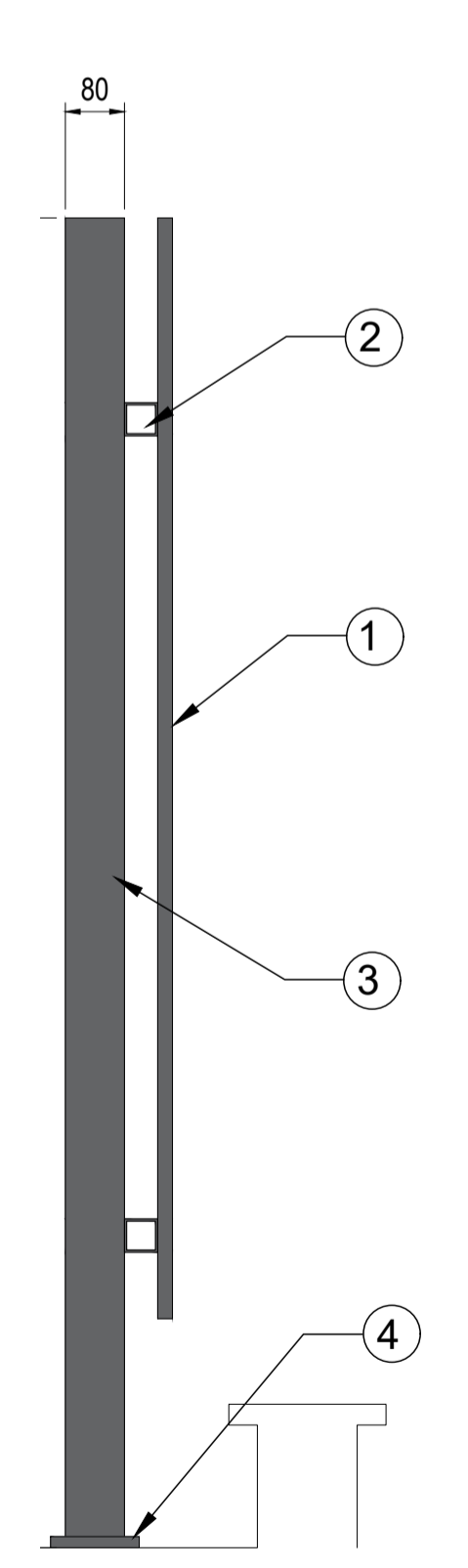
dE04 | Envelope Details: Roof enclosure
02 | 7th floor enclosure A elevation



dE04 | Envelope Details: Roof enclosure
04 | 5th floor enclosure B elevation



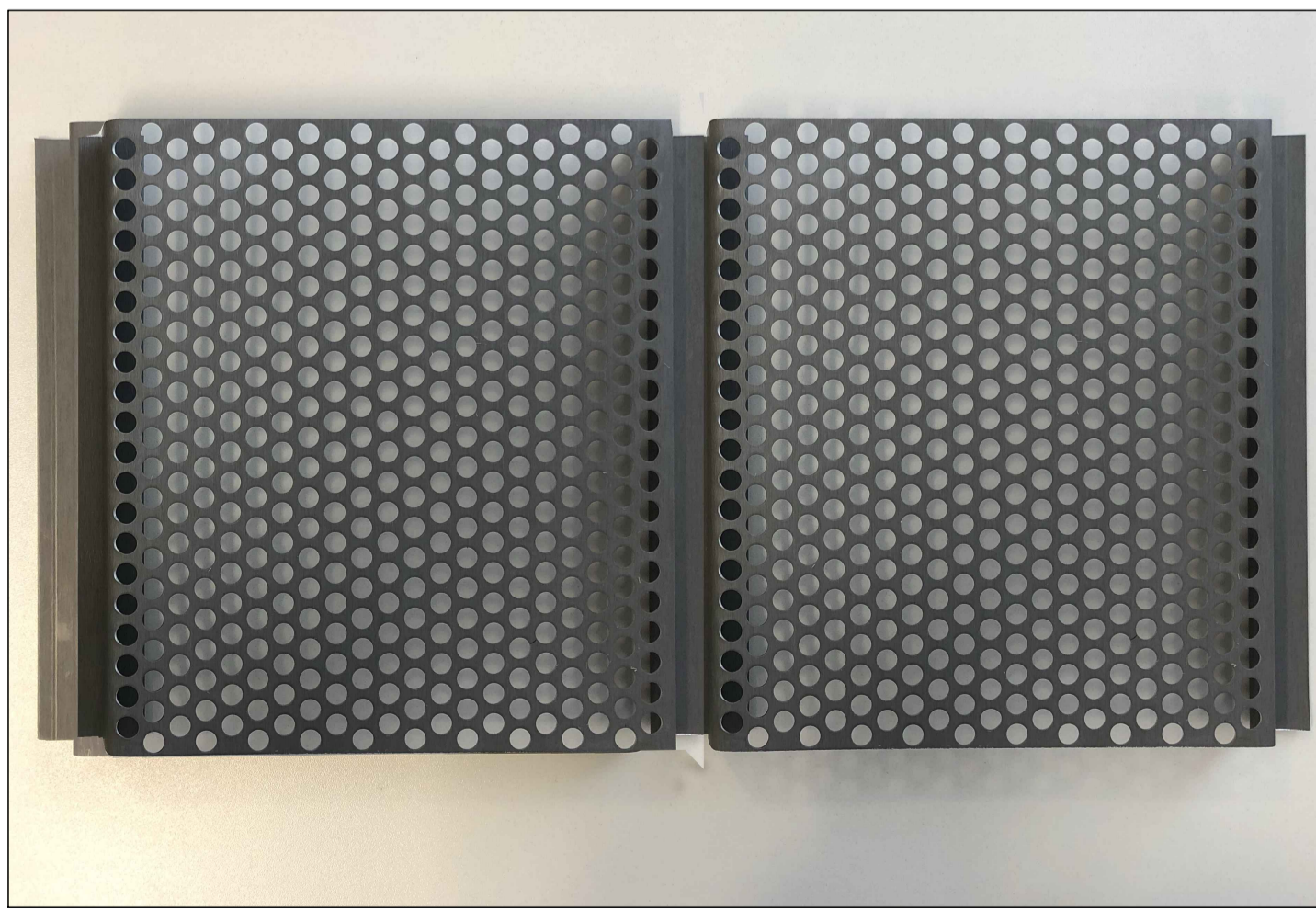
dE04 | Envelope Details: Roof enclosure
03 | Section A



dE04 | Envelope Details: Roof enclosure
05 | Section B

GENERAL NOTES
Do not scale from drawings.
To be read in conjunction with all relevant Architects', Services and Structural Engineers' drawings.
All dimensions to be checked on site.
Errors to be reported immediately to the Architect.

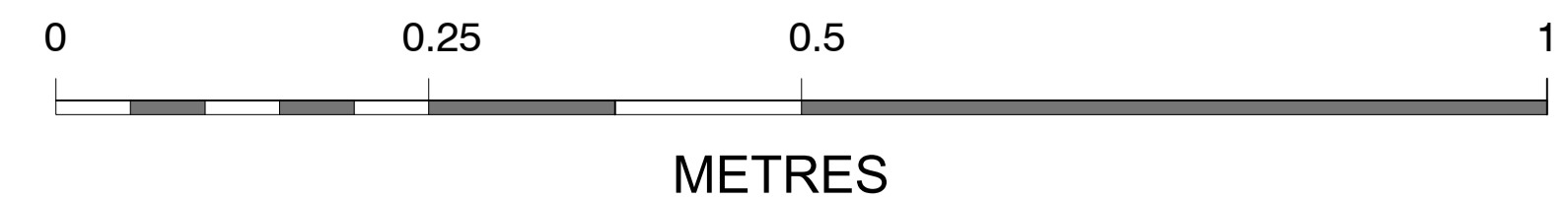
- INTERLOCKING PANEL**
- ① VMZINC Interlocking Panels
 - ② Horizontal steel frame 45x45 mm
 - ③ Vertical posts 80 x 80 mm
 - ④ Square steel plate 120 x 120 mm
 - ⑤ 50 mm Rockwool mineral wool
 - ⑥ 18 mm plywood
 - ⑦ Perforated metal sheet



VMZINC INTERLOCKING PANEL



STANDING SEAM VERTICAL PANEL



| Rev. | Date | Description | DB | CB |
|------|------------|--------------------|----|----|
| P2 | 10.01.2020 | Issue for planning | PA | PA |
| P1 | 29.07.2019 | Issue for planning | AG | PA |

TT Architects

2 Eustace House
Old Paradise Street
London, SE11 6AN

Project
Z-WILD COURT
4 Wild Court & 75 Kingsway
London
WC2B 4AU

Client
Z Hotels

Drawing Name
Envelope Details
Roof enclosure detail 01

| Date | Issue |
|------------|-----------------------|
| 25.07.2019 | For planning |
| 1/10 @A1 | Drawn/Checked P/PA |

Drawing No. & Revision