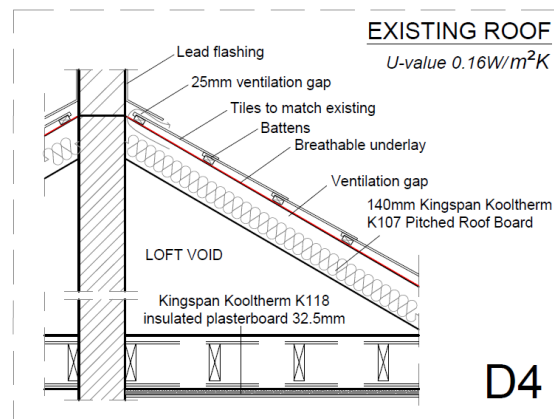
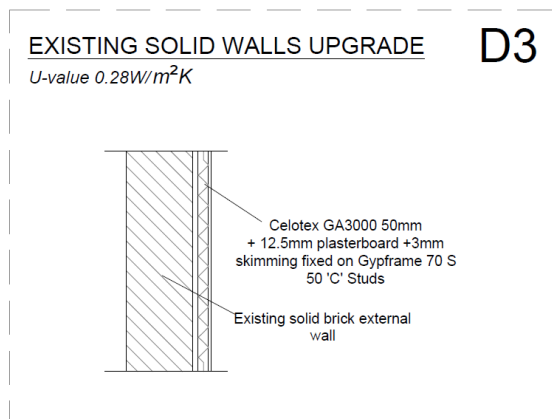
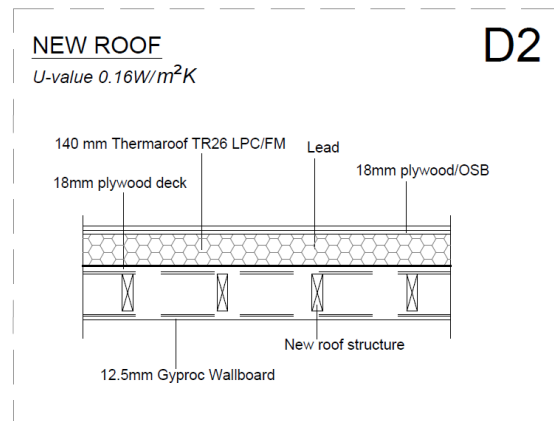
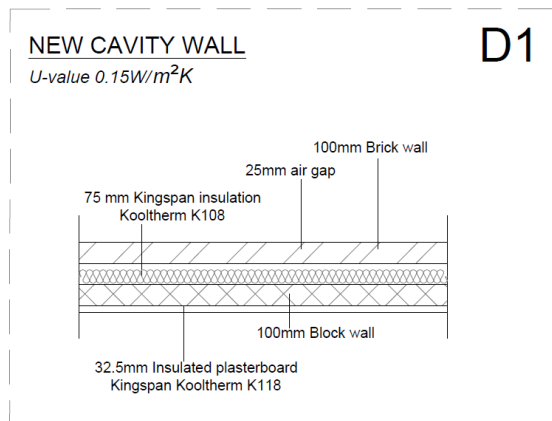


**Condition 6 : Sustainability Statement**

**1. ENERGY and CO2 EMISSIONS**

a. Materials

The fabric elements of the new side extension will be better than the U-values specified in Approved Document L1A, table 2, as per below. The existing building elements will be upgraded with details to meet regulations for new-build as well.



All windows will be replaced with new timber 24mm double glazed windows, with a structure of 4mm/16mm/4mm argon filled and Low-E, that will have a U-value of maximum 1.8W/m<sup>2</sup>K. The windows will be made of sustainable timber.

b. Heating

The new units will be heated with gas condensing boilers and energy efficient radiators. New pressurized system with energy efficient water cylinder will be used in each unit for the supply of hot water.

c. Lighting and ventilation

All main rooms of all flats will have natural light and ventilation. Cross ventilation is achieved on all the flats, and all windows will be fitted with trickle ventilation. Direct solar gain is possible for the main living areas of all flats throughout the year, and on the bedrooms in part of the year. Fitted blinds will provide shading to the users.

LED low-consumption lamps will be fitted in all flats, as well as the communal areas and any external of the building.

d. White goods

The white goods used will be have an energy label of A+ or more.

e. Transport

Six spaces of cycle parking is provided on site, urging the users to make use of bicycles for their transport. Good public transport links and proximity to the local amenities make the need for a private car unnecessary.

## 2. WATER

Low consumption white goods will be used in the new flats. The new plumbing fixings and sanitary ware will achieve a maximum internal water use of 105 litres/person/day. Details of this will be submitted and approved prior to occupation as per Condition 7 of the planning permission.

## 3. WASTE

Adequate arrangements for the separate storage of general refuse and recycling has been provided on site, with 1No x 770l eurobins for each. The flats internally will be fitted with separate bins for general refuse and recycling in the kitchens as well.

#### **4. MANAGEMENT**

During construction the site will be hoarded on both sides and all the relevant Health and Safety measures will be taken. The site will operate within the approved working hours of 8am to 6pm on weekdays and 8am to 1pm on Saturdays. Any damages in the public realm caused by deliveries / construction will be rectified immediately. At the end of each day the pavement around the site will be properly cleaned.