

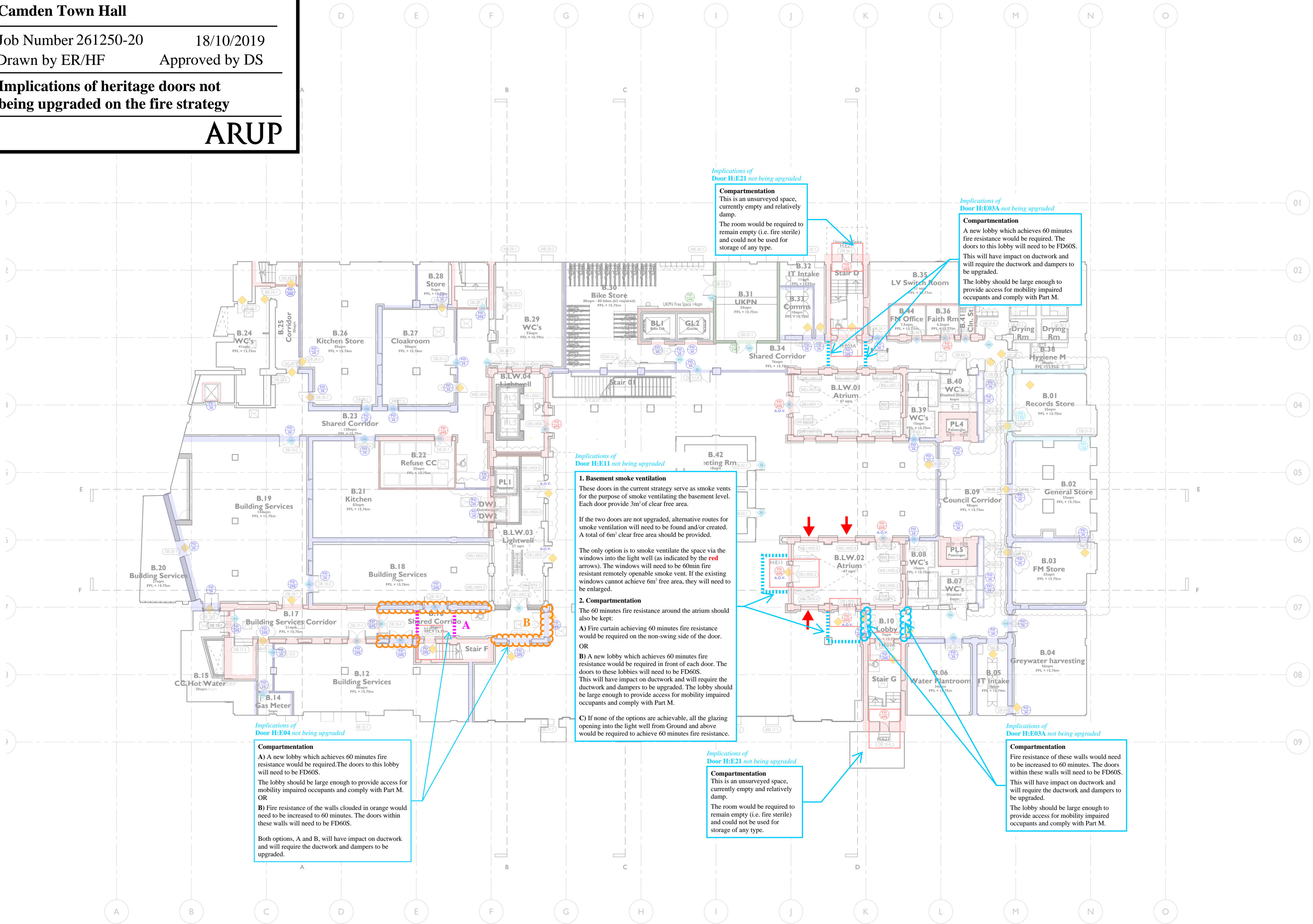
Camden Town Hall

Job Number 261250-2018/10/2019

Drawn by ER/HFApproved by DS

Implications of heritage doors not being upgraded on the fire strategy

ARUP



Fire Key	
	240min Fire resistant door
	240min Fire resistant door with smoke seals
	120min Fire resistant door
	120min Fire resistant door with smoke seals
	60min Fire resistant door
	60min Fire resistant door with smoke seals
	30min Fire resistant door
	30min Fire resistant door with smoke seals
A.Q.V. Remotely operated automatic opening smoke vent door to be opened by fire service from a safe location in the event of a fire	
Security Key	
	Token Reader
	Electro-magnetic locking
	Type C - Containment Only
	Existing electromagnetic locking to be used
	Door contact (reports to central)
	Request to exit (button)
	Break glass emergency unlock
	Electromagnetic lock, lever handle
Accessibility Key	
Ex	Existing door
New	New door
0000	Clear width through single opening leaf, in mm
A	Automatic opening door
MO	Manually opening door
HO	Door held open on electromagnetic catches
DC	Non-powered doors closers
NDC	No doors closers
Access notes from Jane Toplis mark-up of 30.07.19	
01	Assume always open when building open.
02	Assume manual opening.
03	Assume no automation.
04	Council policy on automatic door to meeting room. Nice to have.
05	Council policy on automating doors to accessible WC cubicles.
06	Preferable if completely new door has 750mm clear width through one open leaf
07	Prefer single door 900mm clear width automated.
08	Assumed Camden Centre tenant will have managed means of escape procedure.
09	Not in use.
10	Doors currently left open. If they are closed in future (as per security strategy) they need automation.
11	Council to reconfirm that only side doors being automated is acceptable (I understand main central door is difficult to automate.
12	Council to confirm it is acceptable for there to be management strategy to assist wheel chair user to access wheel chair refuge, or automate doors.
13	Tenant needs to have management strategy to open door or automate.
14	Not in use.
15	Can these doors be removed?
16	Automatic doors on activation of fire alarm. Purcell to confirm details of doors for comments on accessibility.
17	These new double doors are too narrow. Can they be 1.5 or 1 door leaf?
18	These doors need to be automated, to assist wheel chair users reaching refuges, or management strategy required.
19	Not in use.
20	Should platform lift doors be fire rated?
21	Not in use.
22	Not in use.
23	Not in use.
24	Not in use.
25	Need to see details of terraces.
26	Not in use.
Acoustic Key	
	Acoustic rating for newly proposed door, Rw30
	Acoustic rating for newly proposed door, Rw35
	Acoustic rating for newly proposed door, Rw40
	Newly proposed door, no acoustic rating required
	Doorset retained (Pending review)
	Recommended 35Rw
	Recommended 40Rw

Notes:

Drawings are based on survey data and may not accurately represent what is physically present.

Do not scale from this drawing. All dimensions are to be verified on site before proceeding with the work.

All dimensions are in millimeters unless noted otherwise.

Purcell shall be notified in writing of any discrepancies.

P00

First Issue 05 Aug 2019RH

ISSUE	DATE	DRAWN	CHECKED	DESCRIPTION

CLIENT

Lendlease

PROJECT

Camden Town Hall

DRAWING TITLE

Basement - Door Coordination Plan
Heritage Fire Doors

SIZE & SCALE

A1L 1:200

DRAWING STATUS

WORK IN PROGRESS

JOB NUMBER

238664

DRAWING NO.

CTH-PUR-B0-DR-31-A-5600

REVISION

P01

15 Bernondsey Square, Tower Bridge Road, London, SE1 3JN . T+44(0)20 7397 7171, E.london@purcelluk.com
© PURCELL 2012. PURCELL IS THE TRADING NAME OF PURCELL MILLER TRITTON LLP

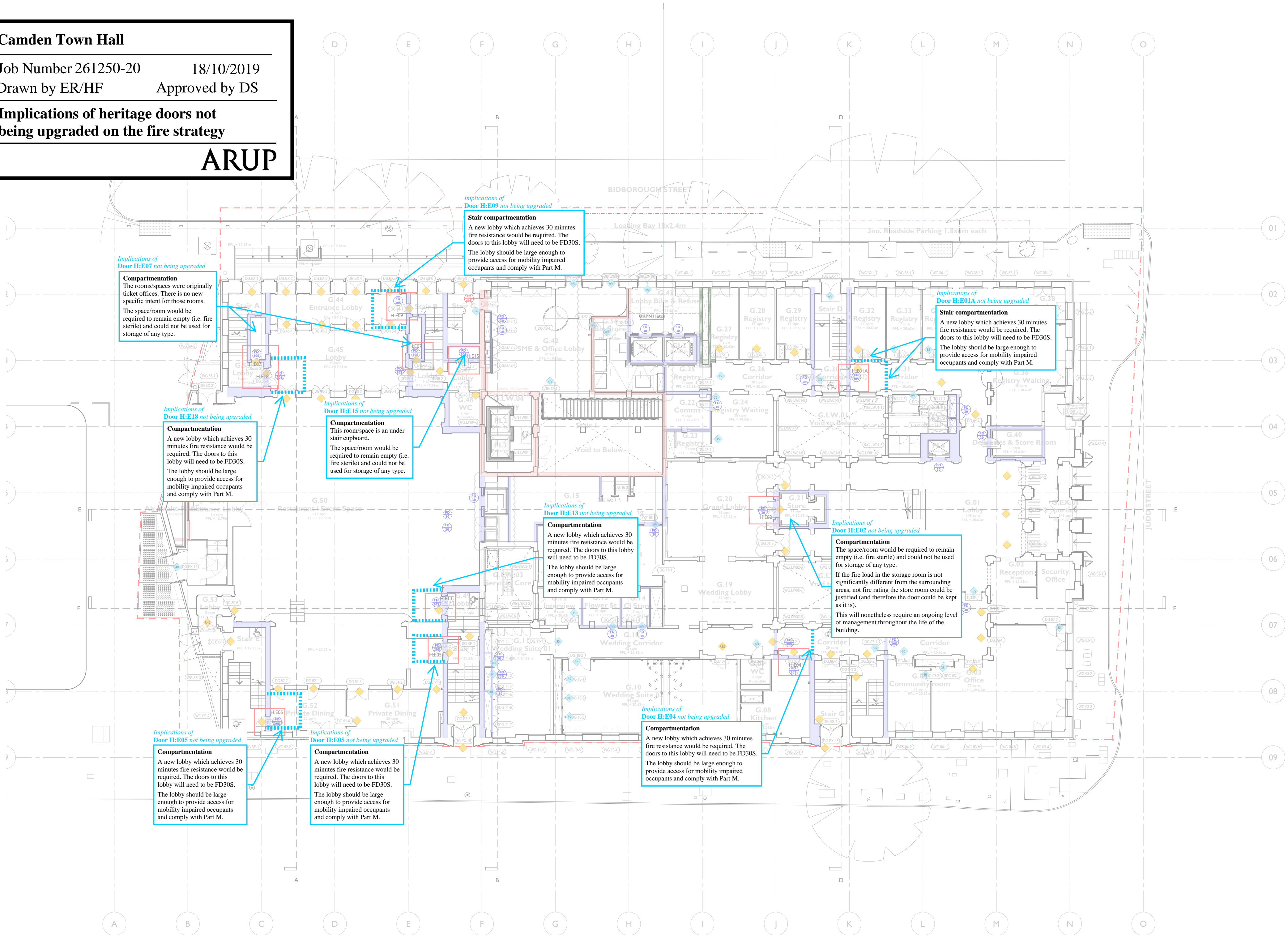
Camden Town Hall

Job Number 261250-2018/10/2019

Drawn by ER/HFApproved by DS

Implications of heritage doors not being upgraded on the fire strategy

ARUP



Fire Key	
	240min Fire resistant door
	240min Fire resistant door with smoke seals
	120min Fire resistant door
	120min Fire resistant door with smoke seals
	60min Fire resistant door
	60min Fire resistant door with smoke seals
	30min Fire resistant door
	30min Fire resistant door with smoke seals
A.O.V.	Remotely operated automatic opening smoke vent door to be opened by fire service from a safe location in the event of a fire
Security Key	
	Token Reader
	Electro-magnetic locking
	Type C - Containment Only
	Existing electromagnetic locking to be used
	Door contact (reports to central)
	Request to exit (button)
	Break glass emergency unlock
	Electromagnetic lock, lever handle
Accessibility Key	
Ex	Existing door
New	New door
0000	Clear width through single opening leaf, in mm
A	Automatic opening door
MO	Manually opening door
HO	Door held open on electromagnetic catches
DC	Non-powered doors closers
NDC	No doors closers
Access notes from Jane Toplis mark-up of 30.07.19	
01	Assume always open when building open.
02	Assume manual opening.
03	Assume no automation.
04	Council policy on automatic door to meeting room. Nice to have.
05	Council policy on automating doors to accessible WC cubicles.
06	Preferable if completely new door has 750mm clear width through one open leaf
07	Prefer single door 900mm clear width automated.
08	Assumed Camden Centre tenant will have managed means of escape procedure.
09	Not in use.
10	Doors currently left open. If they are closed in future (as per security strategy) they need automation.
11	Council to reconfirm that only side doors being automated is acceptable (I understand main central door is difficult to automate.
12	Council to confirm it is acceptable for there to be management strategy to assist wheel chair user to access wheel chair refuge, or automate doors.
13	Tenant needs to have management strategy to open door or automate.
14	Not in use.
15	Can these doors be removed?
16	Automatic doors on activation of fire alarm. Purcell to confirm details of doors for comments on accessibility.
17	These new double doors are too narrow. Can they be 1.5 or 1 door leaf?
18	These doors need to be automated, to assist wheel chair users reaching refuges, or management strategy required.
19	Not in use.
20	Should platform lift doors be fire rated?
21	Not in use.
22	Not in use.
23	Not in use.
24	Not in use.
25	Need to see details of terraces.
26	Not in use.
Acoustic Key	
	Acoustic rating for newly proposed door, Rw30
	Acoustic rating for newly proposed door, Rw35
	Acoustic rating for newly proposed door, Rw40
	Newly proposed door, no acoustic rating required
	Doorset retained (Pending review)
	Recommended 35Rw
	Recommended 40Rw

Notes:

Drawings are based on survey data and may not accurately represent what is physically present.

Do not scale from this drawing. All dimensions are to be verified on site before proceeding with the work.

All dimensions are in millimeters unless noted otherwise.

Purcell shall be notified in writing of any discrepancies.

P00					
First Issue 05 Aug 2019	RH				
ISSUE	DATE	DRAWN	CHECKED	DESCRIPTION	

CLIENT Lendlease

PROJECT Camden Town Hall

DRAWING TITLE Ground Floor - Door Coordination Plan
Heritage Fire Doors

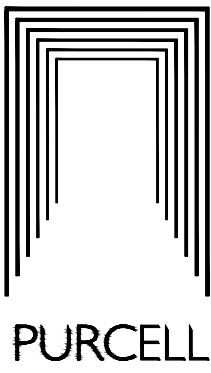
SIZE & SCALE A1L 1:100

DRAWING STATUS WORK IN PROGRESS

JOB NUMBER 238664

DRAWING NO. CTH-PUR-G0-DR-31-A-5601

REVISION P01



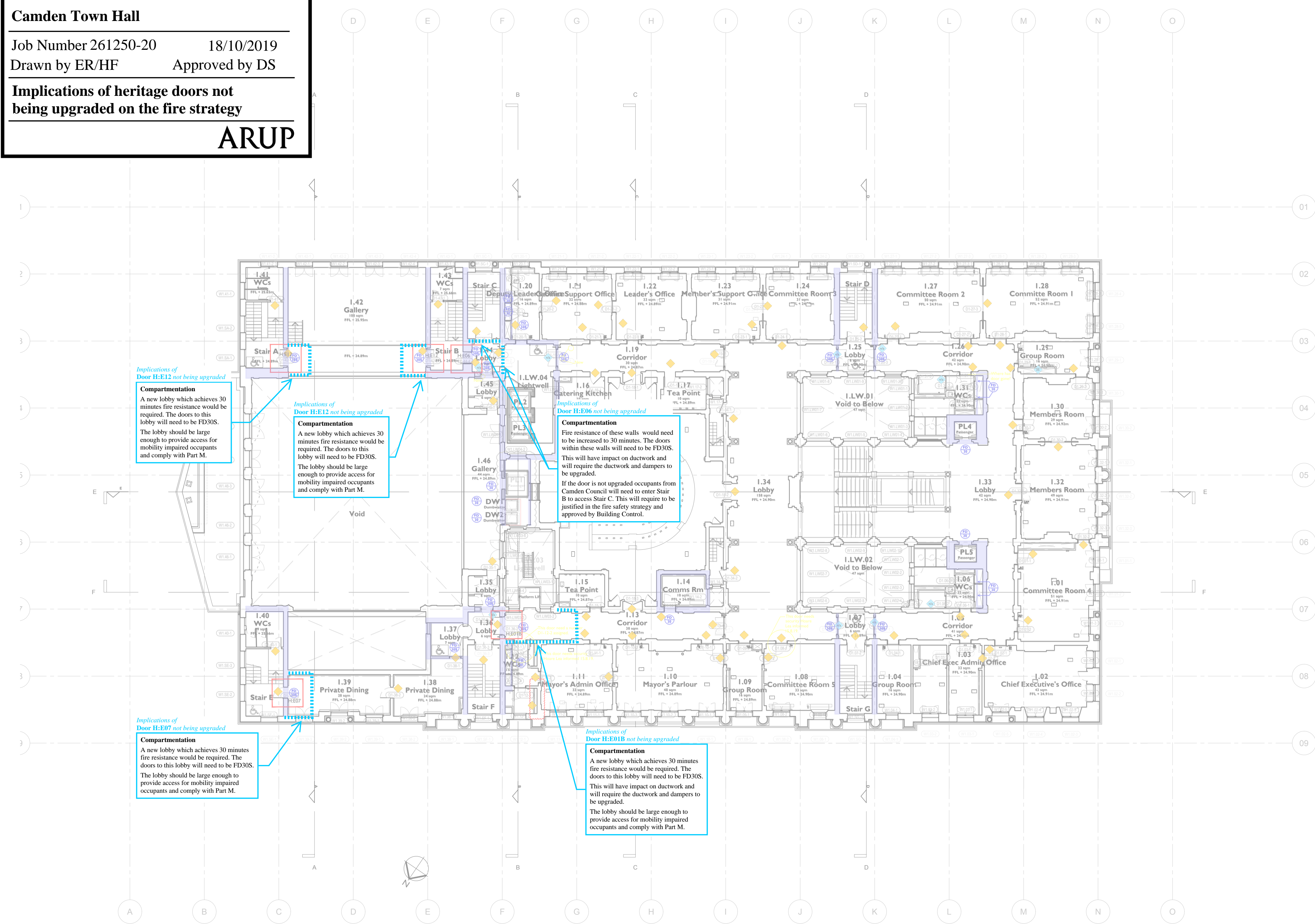
Camden Town Hall

Job Number 261250-2018/10/2019

Drawn by ER/HFApproved by DS

Implications of heritage doors not being upgraded on the fire strategy

ARUP



Fire Key	
	240min Fire resistant door
	240min Fire resistant door with smoke seals
	120min Fire resistant door
	120min Fire resistant door with smoke seals
	60min Fire resistant door
	60min Fire resistant door with smoke seals
	30min Fire resistant door
	30min Fire resistant door with smoke seals
A.O.V. Remotely operated automatic opening smoke vent door to be opened by fire service from a safe location in the event of a fire	
Security Key	
	Token Reader
	Electro-magnetic locking
	Type C - Containment Only
	Existing electromagnetic locking to be used
	Door contact (reports to central)
	Request to exit (button)
	Break glass emergency unlock
	Electromagnetic lock, lever handle
Accessibility Key	
	Existing door
	New door
	Clear width through single opening leaf, in mm
	Automatic opening door
	Manually opening door
	Door held open on electromagnetic catches
	Non-powered doors closers
	No doors closers
Access notes from Jane Toplis mark-up of 30.07.19	
	Assume always open when building open.
	Assume manual opening.
	Assume no automation.
	Council policy on automatic door to meeting room. Nice to have.
	Council policy on automating doors to accessible WC cubicles.
	Preferable if completely new door has 750mm clear width through one open leaf
	Prefer single door 900mm clear width automated.
	Assumed Camden Centre tenant will have managed means of escape procedure.
	Not in use.
	Doors currently left open. If they are closed in future (as per security strategy) they need automation.
	Council to reconfirm that only side doors being automated is acceptable (I understand main central door is difficult to automate.
	Council to confirm it is acceptable for there to be management strategy to assist wheel chair user to access wheel chair refuge, or automate doors.
	Tenant needs to have management strategy to open door of automate.
	Not in use.
	Can these doors be removed?
	Automatic doors on activation of fire alarm. Purcell to confirm details of doors for comments on accessibility.
	These new double doors are too narrow. Can they be 1.5 or 1 door leaf?
	These doors need to be automated, to assist wheel chair users reaching refuges, or management strategy required.
	Not in use.
	Should platform lift doors be fire rated?
	Not in use.
	Not in use.
	Not in use.
	Not in use.
	Need to see details of terraces.
	Not in use.
Acoustic Key	
	Acoustic rating for newly proposed door, Rw30
	Acoustic rating for newly proposed door, Rw35
	Acoustic rating for newly proposed door, Rw40
	Newly proposed door, no acoustic rating required
	Doorset retained (Pending review)
	Recommended 35Rw
	Recommended 40Rw

Notes:

Drawings are based on survey data and may not accurately represent what is physically present.

Do not scale from this drawing. All dimensions are to be verified on site before proceeding with the work.

All dimensions are in millimeters unless noted otherwise.

Purcell shall be notified in writing of any discrepancies.

P00

First Issue 05 Aug 2019RH

ISSUE	DATE	DRAWN	CHECKED	DESCRIPTION

CLIENT

Lendlease

PROJECT

Camden Town Hall

DRAWING TITLE

First Floor - Door Coordination Plan
Heritage Fire Doors

SIZE & SCALE

A1L 1:100

DRAWING STATUS

WORK IN PROGRESS

JOB NUMBER

238664

DRAWING NO.

CTH-PUR-L01-DR-31-A-5602

REVISION

P01

15 Bernondday Square, Tower Bridge Road, London, SE1 3JN . T+44[0]20 7397 7171. E.london@purcelluk.com
© PURCELL 2012. PURCELL® IS THE TRADING NAME OF PURCELL MILLER TRITTON LLP

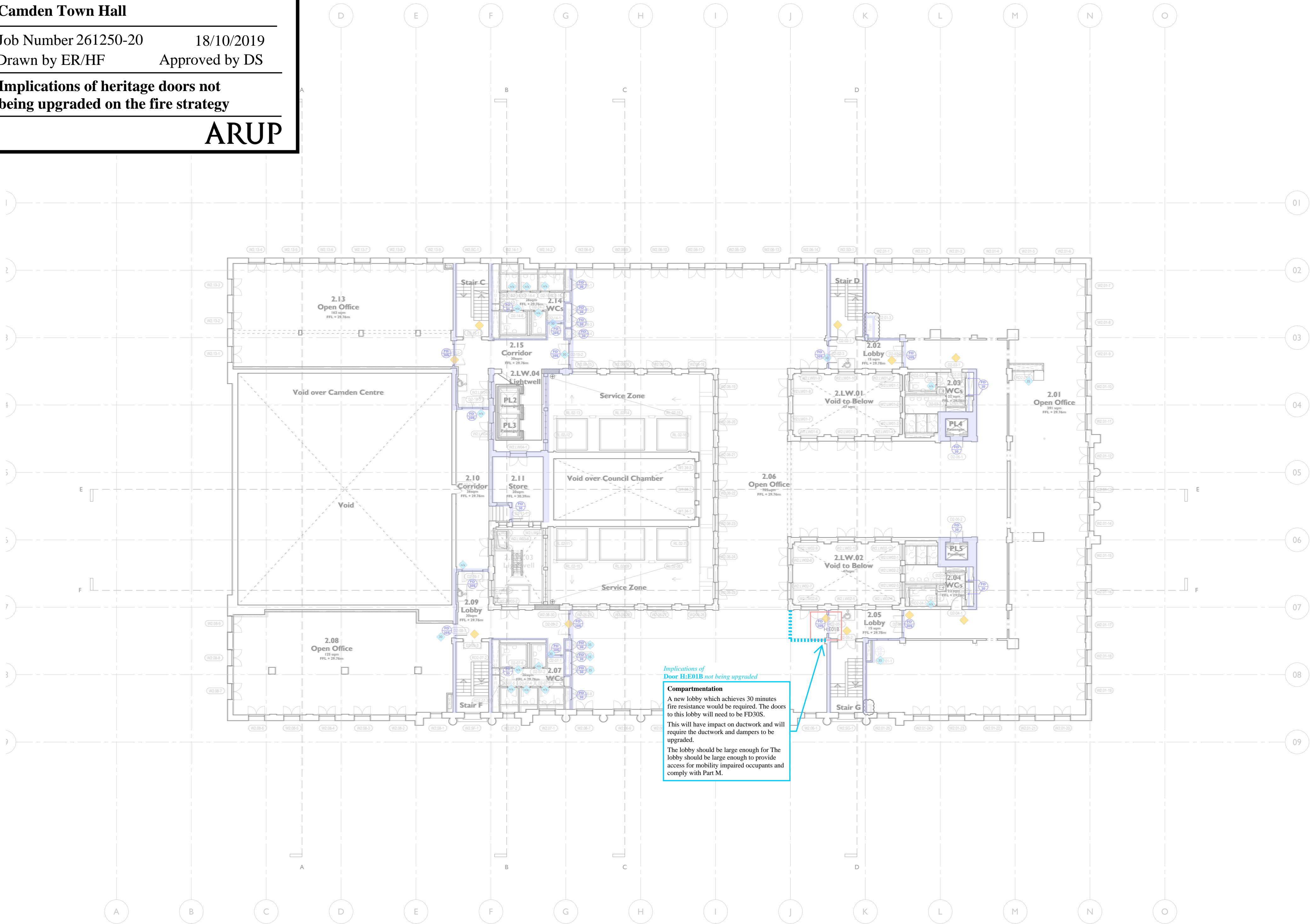
Camden Town Hall

Job Number 261250-2018/10/2019

Drawn by ER/HFApproved by DS

Implications of heritage doors not being upgraded on the fire strategy

ARUP



Fire Key	
	240min Fire resistant door
	240min Fire resistant door with smoke seals
	120min Fire resistant door
	120min Fire resistant door with smoke seals
	60min Fire resistant door
	60min Fire resistant door with smoke seals
	30min Fire resistant door
	30min Fire resistant door with smoke seals
A.O.V.	Remotely operated automatic opening smoke vent door to be opened by fire service from a safe location in the event of a fire
Security Key	
	Token Reader
	Electro-magnetic locking
	Type C - Containment Only
	Existing electromagnetic locking to be used
	Door contact (reports to central)
	Request to exit (button)
	Break glass emergency unlock
	Electromagnetic lock, lever handle
Accessibility Key	
Ex	Existing door
New	New door
0000	Clear width through single opening leaf, in mm
A	Automatic opening door
MO	Manually opening door
HO	Door held open on electromagnetic catches
DC	Non-powered doors closers
NDC	No doors closers
Access notes from Jane Toplis mark-up of 30.07.19	
01	Assume always open when building open.
02	Assume manual opening.
03	Assume no automation.
04	Council policy on automatic door to meeting room. Nice to have.
05	Council policy on automating doors to accessible WC cubicles.
06	Preferable if completely new door has 750mm clear width through one open leaf
07	Prefer single door 900mm clear width automated.
08	Assumed Camden Centre tenant will have managed means of escape procedure.
09	Not in use.
10	Doors currently left open. If they are closed in future (as per security strategy) they need automation.
11	Council to reconfirm that only side doors being automated is acceptable (I understand main central door is difficult to automate.
12	Council to confirm it is acceptable for there to be management strategy to assist wheel chair user to access wheel chair refuge, or automate doors.
13	Tenant needs to have management strategy to open door or automate.
14	Not in use.
15	Can these doors be removed?
16	Automatic doors on activation of fire alarm. Purcell to confirm details of doors for comments on accessibility.
17	These new double doors are too narrow. Can they be 1.5 or 1 door leaf?
18	These doors need to be automated, to assist wheel chair users reaching refuges, or management strategy required.
19	Not in use.
20	Should platform lift doors be fire rated?
21	Not in use.
22	Not in use.
23	Not in use.
24	Not in use.
25	Need to see details of terraces.
26	Not in use.
Acoustic Key	
	Acoustic rating for newly proposed door, Rw30
	Acoustic rating for newly proposed door, Rw35
	Acoustic rating for newly proposed door, Rw40
	Newly proposed door, no acoustic rating required
	Doorset retained (Pending review)
	Recommended 35Rw
	Recommended 40Rw

Notes:

Drawings are based on survey data and may not accurately represent what is physically present.

Do not scale from this drawing. All dimensions are to be verified on site before proceeding with the work.

All dimensions are in millimeters unless noted otherwise.

Purcell shall be notified in writing of any discrepancies.

P00				
First Issue 05 Aug 2019 RH				
ISSUE	DATE	DRAWN	CHECKED	DESCRIPTION

CLIENT Lendlease

PROJECT Camden Town Hall

DRAWING TITLE Second Floor - Door Coordination Drawing
Heritage Fire Doors

SIZE & SCALE A1L 1:200

DRAWING STATUS WORK IN PROGRESS

JOB NUMBER 238664

DRAWING NO. CTH-PUR-L02-DR-31-A-5604

REVISION P01

