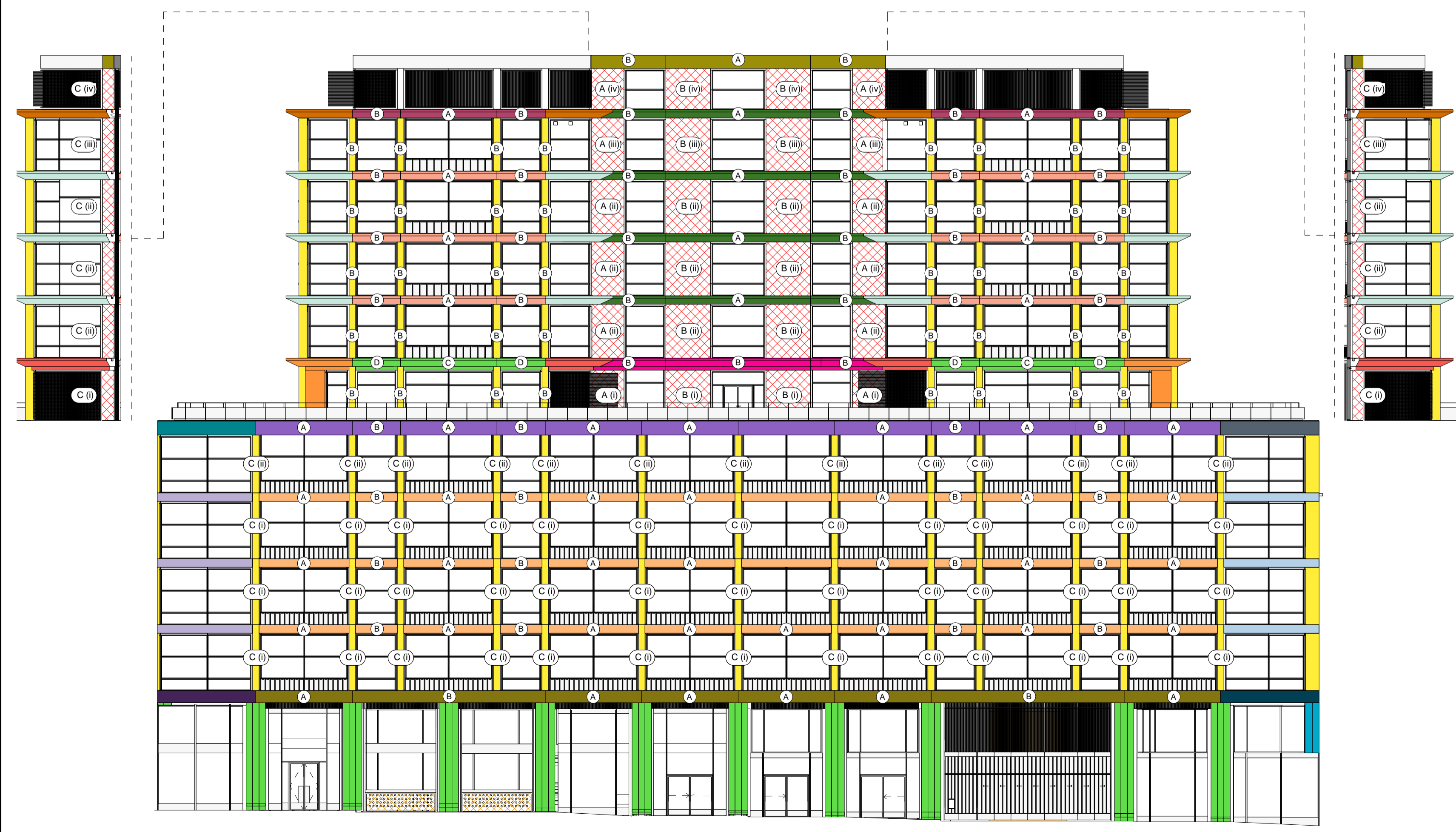




1 Concrete System - Eastern Elevation 1 : 200



2 Concrete System - Northern Elevation 1 : 200



3 Concrete System - Western Elevation 1 : 200



4 Concrete System - Southern Elevation 1 : 200

KEY FINIS	PANELS
EWS-701 Ground Floor Fin - Profile I	EWS-901 Fluted Panel with Integrated Bench
EWS-702 Ground Floor Fin - Profile II	EWS-902 Flanking Panel
EWS-703 Ground Floor Fin - Profile III	EWS-903 Inset Core Panel
EWS-704 Office Facade Fin - Profile I	EWS-905 Panel with integrated Concretre
EWS-705 Office Facade Fin - Profile II	
EWS-706 Office Facade Fin - Profile III	
EWS-707 Office Facade Fin - Profile IV	
EWS-708 Office Facade Fin - Profile V	

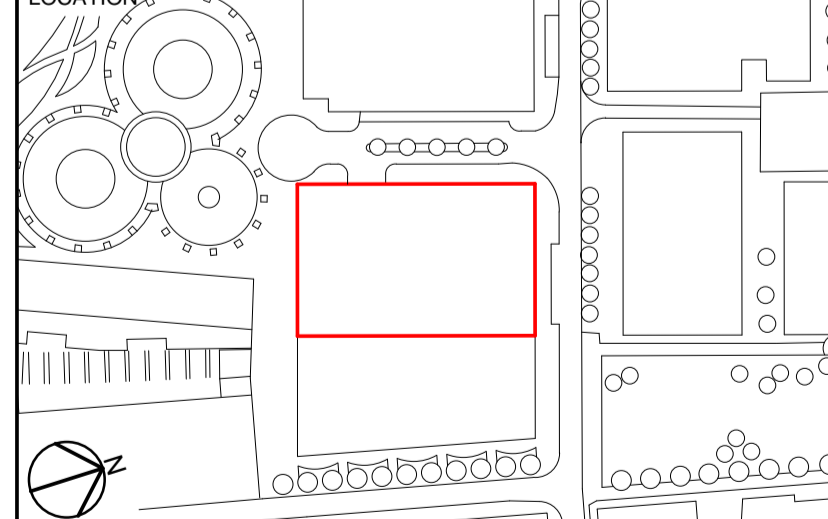
LEDGES
EWS-801 Lower Floor Ledges - Deep
EWS-802 Lower Floor Ledges - Shallow
EWS-803 Upper Floor Ledges - Deep
EWS-804 Upper Floor Ledges - Shallow OMITTED
EWS-805 Lower Floor Corner Ledges - Deep
EWS-806 Lower Floor Corner Ledges - Shallow
EWS-807 Lower Floor Corner Ledges - Deep to Shallow
EWS-808 Upper Floor Corner Ledges - Deep
EWS-809 Upper Floor Corner Ledges - Shallow OMITTED
EWS-810 Ground Floor Cornice - Deep
EWS-811 Ground Floor Cornice - Shallow
EWS-812 Terrace Cornice UPDATED, SEE EWS-827-828
EWS-813 Ground Floor Corner Cornice - Deep
EWS-814 Ground Floor Corner Cornice - Shallow
EWS-815 Ground Floor Corner Cornice - Deep to Shallow
EWS-816 Terrace Corner Cornice UPDATED, SEE EWS-829-831
EWS-817 Upper Floor Corner Cornice - Deep to Shallow OMITTED
EWS-818 Loggia Ledge UPDATED, SEE EWS-835-837
EWS-819 Inset Core Ledge
EWS-820 Parthouse Inset Core Header
EWS-821 109M Loggia Ledges
EWS-822 Level 06 Ledges
EWS-823 Level 06 Corner Ledges - NE and SE corners
EWS-824 Level 06 Corner Ledges - NW and SW corners
EWS-825 Level 06 Corner Ledges - W corners
EWS-826 Level 06 Inset Core Ledge
EWS-827 Terrace Cornice - S and E facades
EWS-828 Terrace Cornice - N and W facades
EWS-829 Terrace Corner Cornice - SE
EWS-830 Terrace Corner Cornice - SW and NE
EWS-831 Terrace Corner Cornice - NW
EWS-832 Terrace Cornice - S and E Loggia
EWS-833 Level 09M Ledges
EWS-834 Level 09M Corner Ledges
EWS-835 Loggia Ledge - S and E
EWS-836 Loggia Ledge - N
EWS-837 GF Mezz. Loggia Ledge - S and E
EWS-838 South Loggia Soffit
EWS-839 East Loggia Soffit
EWS-840 North Loggia Soffit

REV	DATE	DESCRIPTION
01	31/10/18	Final Stage 4 Issue
02	07/12/18	Stage 4 Contractor's Proposals

CONSULTANTS	
CLIENT / PROJECT MANAGER:	KCCGPL / ARGENT
CONTRACTOR:	KIER
STRUCTURAL ENGINEER:	AKT - II
SERVICES ENGINEER:	CUNDALL
COST CONSULTANT:	GARDINER + THEOBALD
FIRE ENGINEER:	OLSSON FIRE ENGINEERING
ACOUSTIC CONSULTANT:	CUNDALL
FACADE ENGINEER:	FMDC
TRANSPORT CONSULTANT:	-
ACCESS CONSULTANT:	-

NOTE
 When this drawing is issued in uncontrolled CAD format it will be accompanied by a PDF version and is issued to enable the recipient to prepare their own documents / models / drawings for which they are solely responsible.
 The recipient should report all drawing errors, omissions and discrepancies to the architect. All dimensions should be checked on site by the contractor and such dimensions shall be the contractor's responsibility.

Allford Hall Monaghan Morris Limited accepts no responsibility or liability for:-
 - any use of this drawing by parties other than the party for whom it was prepared or for purposes other than those for which it was prepared
 - any alterations or additions to or discrepancies arising out of changes to the background information on which the drawings are based that was current at the time of issue, and which occur to that information after it has been issued by AHMM
 - any loss or degradation of the information held in this drawing resulting from the translation from the original file format to any other file format or from the recipient's reading of it in any other programme or any version of the programme other than that which was used to prepare it
 - the accuracy of survey information provided by others or for any costs, claims, proceedings and expenses arising out of reliance on such information
 - any scaling from this drawing other than by the local planning authority solely for the purposes of the planning application to which it relates



ALLFORD HALL MONAGHAN MORRIS
 ARCHITECTS LTD
 MORELANDS, 5-23 OLD STREET LONDON EC1V 9HL
 TEL 020 7251 6261 FAX 020 7251 5123 WEB WWW.AHMM.CO.UK

job title
 King's Cross Central: Building P2
 drawing title / location
 Pre-Cast Concrete - Scoping Elevations

drawn by	checked	scale	STATUS
BP	AR	As indicated@A1	STAGE 4 CP

drawing previously issued for ERs as: - revision

drawing no. KXC-P2-001-18040-A-21-202 02