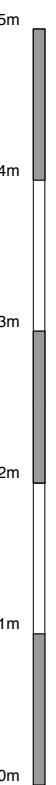
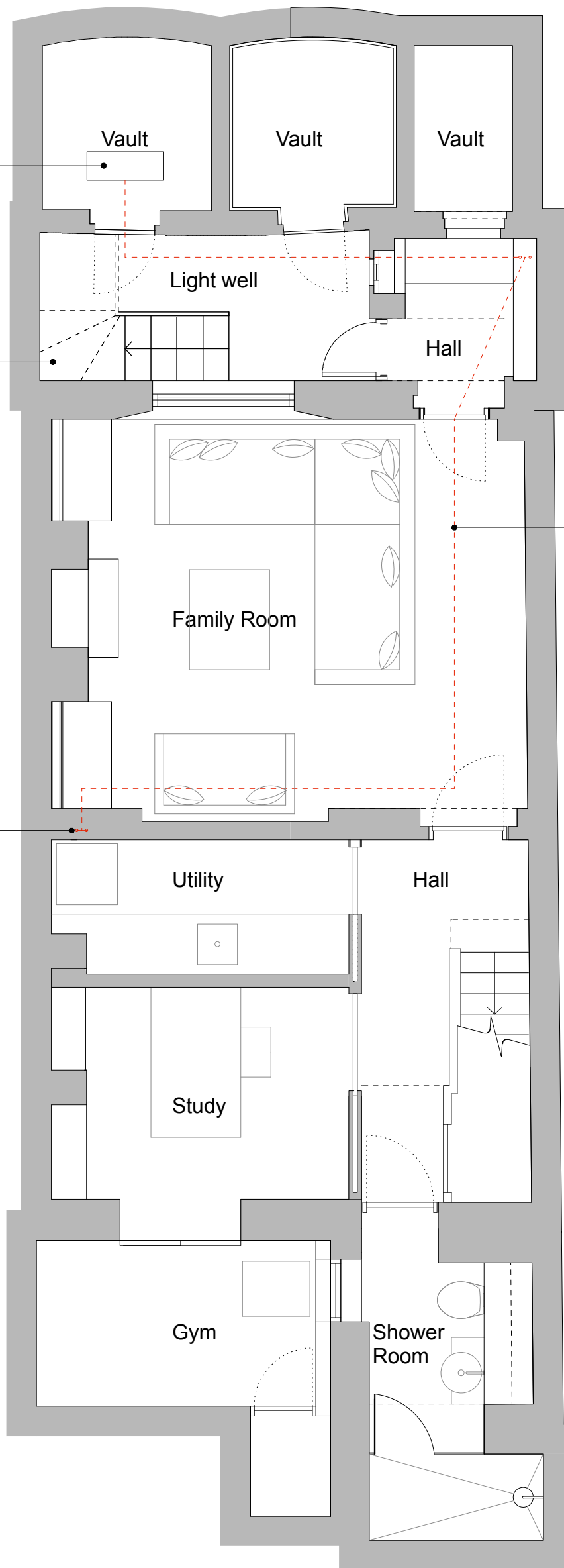


Air conditioning unit within vault, louvred door

Stair as approved under applications- 2017/4723/L and 2017/3820/P

Air conditioning pipework vertical run in void to studwall, wall plasterboard faced, non original fabric

Air conditioning pipework running in ceiling void, ceiling non original plasterboard



Key-

- - - - - Air conditioning horizontal pipe route, 15mm pipe
- - - - - Air conditioning vertical pipe route, 15mm pipe

