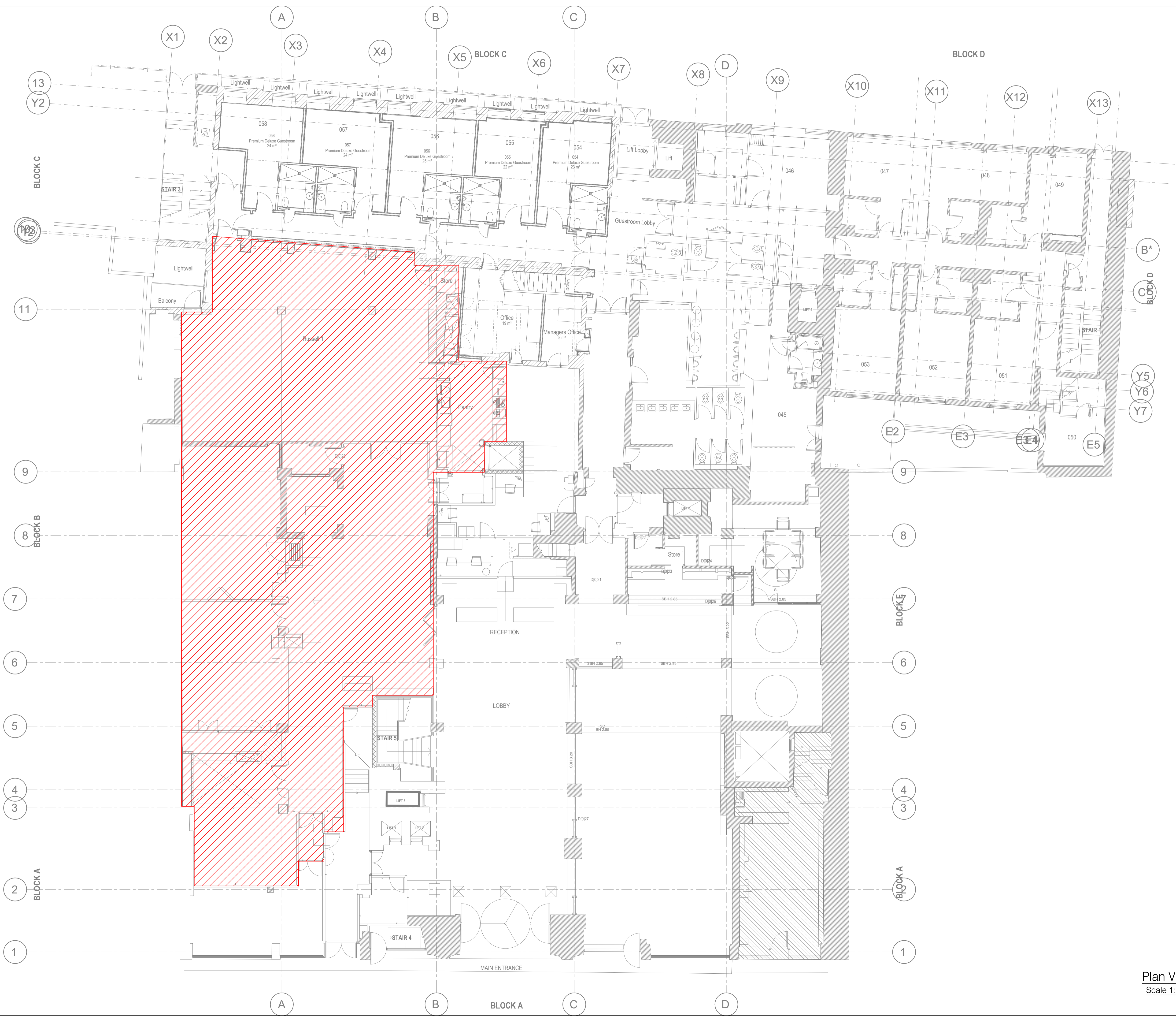


NOTES:

 AREA TO BE STRIPPED OUT



REV	DATE	COMMENTS

DRAWING STATUS: **PLANNING**

PROJECT: **DOUBLETREE BY HILTON LONDON, WEST END**

CLIENT: **CRIMSON HOTELS**

IN ASSOCIATION WITH: **MORRISON DESIGN**

DRAWING TITLE: **PHASE 4 GROUND FLOOR STRIP OUT DRAWING**

HBS HOCKLEY BUILDING SERVICES LIMITED
 Holly House, 9-11 Holly Lane, Marston Green, Birmingham B37 7AP
 ☎ 0121 685 4545 📠 0121 685 4546 📧 admin@hockley-ltd.com

DRAWN BY	CHECKED BY	APPROVED BY
JB	TM	TM
START DATE	SCALE	DRAWING SIZE
13.12.19	1:100	A1
JOB No.	DRAWING No.	REVISION
5097	S10-LOO-01	-

Plan View
Scale 1:100