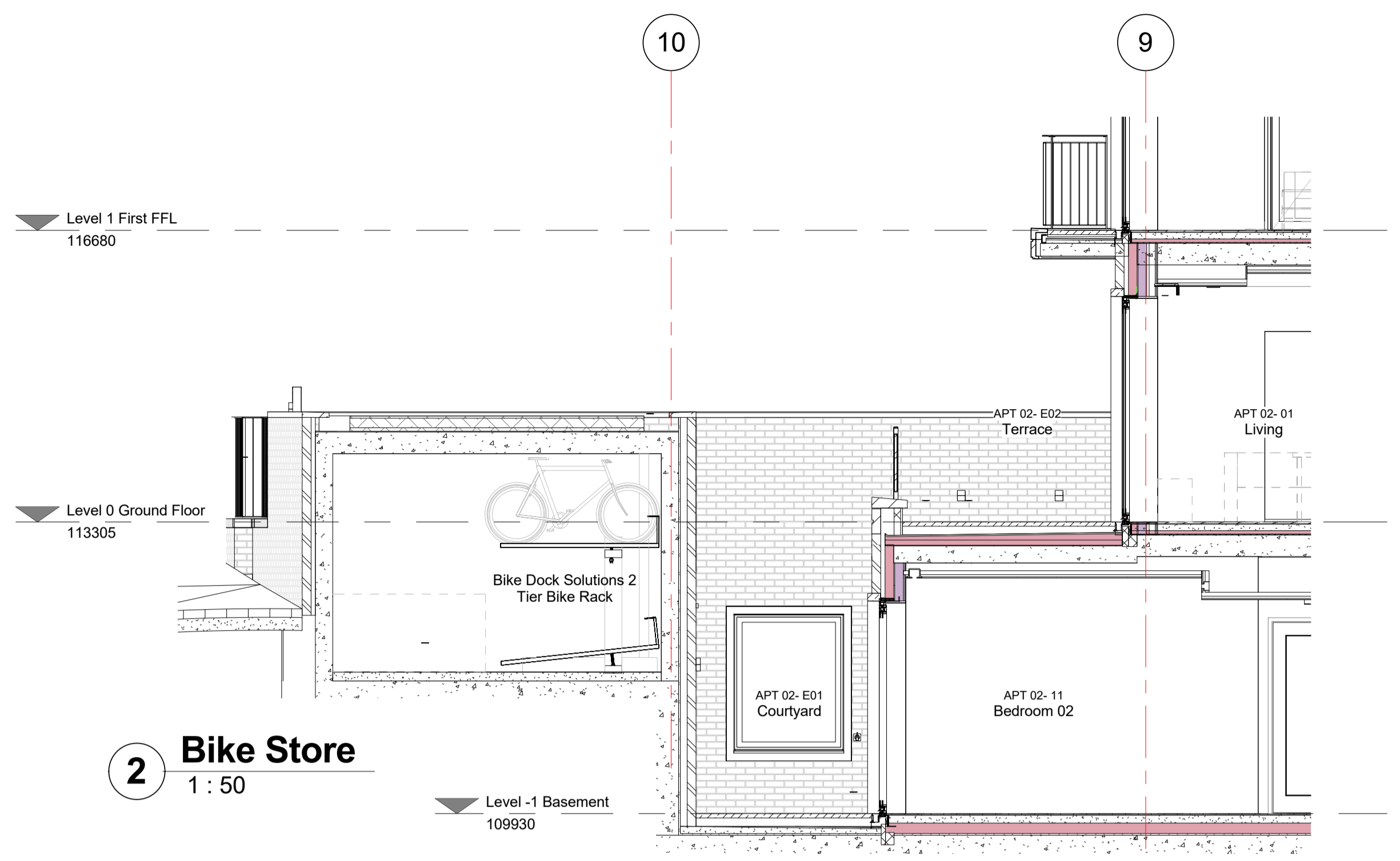
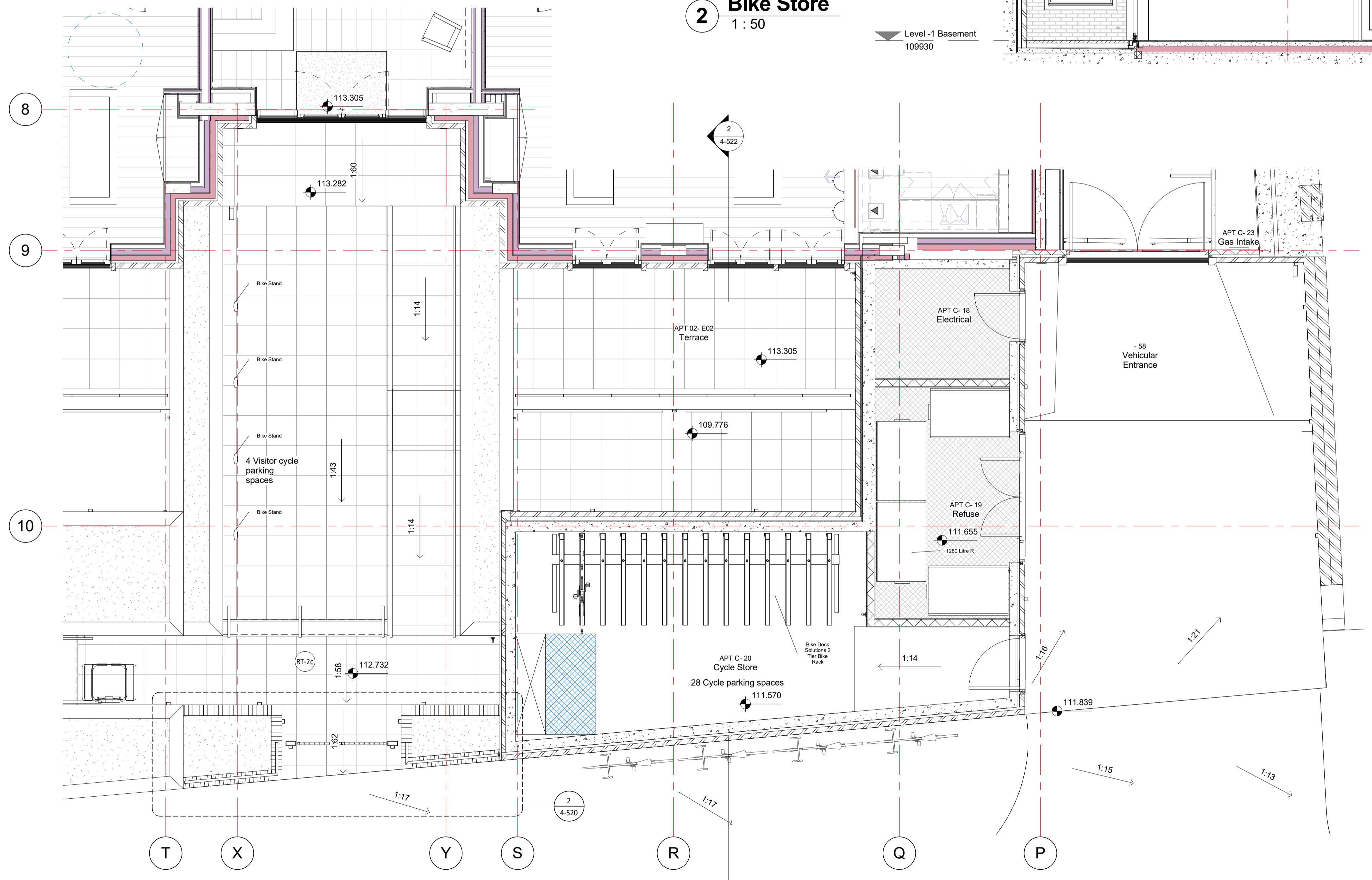


General notes:
 This drawing is copyright of KSR architects. This drawing must be read in conjunction with the Designer's Risk Assessment, specification and all other relevant documentation and drawings. KSR architects accept no liability for any expense, loss or damage of whatsoever nature and however arising from any variation made to this drawing or in the execution of the work to which it relates which has not been referred to them and their approval obtained.
 Do not scale from this drawing or the digital data, only figured dimensions are to be used. For Planning refer to linear scale. Check all dimensions on site prior to carrying out any works - advise any discrepancy.

Notes/Legends



2 Bike Store
 1 : 50



1 Bike and Refuse Store
 1 : 50

| Rev | Notes | dd/mm/yy | By | Chd |
|------------------|-------|----------|----|-----|
| © KSR architects | | | | |
| Stamp | | | | |

Key Plan

KSR ARCHITECTS & INTERIOR DESIGNERS
 KSR Architects LLP
 14 Greenland Street
 London NW1 0ND
 t: +44 (0)20 7692 5000
 e: info@ksrarchitects.com
 www.ksrarchitects.com

Project:
29 NEW END

Title:
Bike and Refuse Store

| | | |
|------------------|---------------|--------------|
| Date: 9/12/2019 | Drawn By: SAS | Checked: SAS |
| Scale: 1 : 50@A1 | | |

| | | |
|--------------------|-------------------|-----------|
| Project Ref: 15031 | Drawing No: 4-522 | Revision: |
|--------------------|-------------------|-----------|