

PLANNING APPLICATION &
LISTED BUILDING CONSENT SUBMISSION
PROPOSED DEMOLITION DRAWINGS

*for project
at
40 Chester Terrace, London NW1 4ND*

*for
Jose & Daniela Neves*

*by
Groves Natcheva Architects*

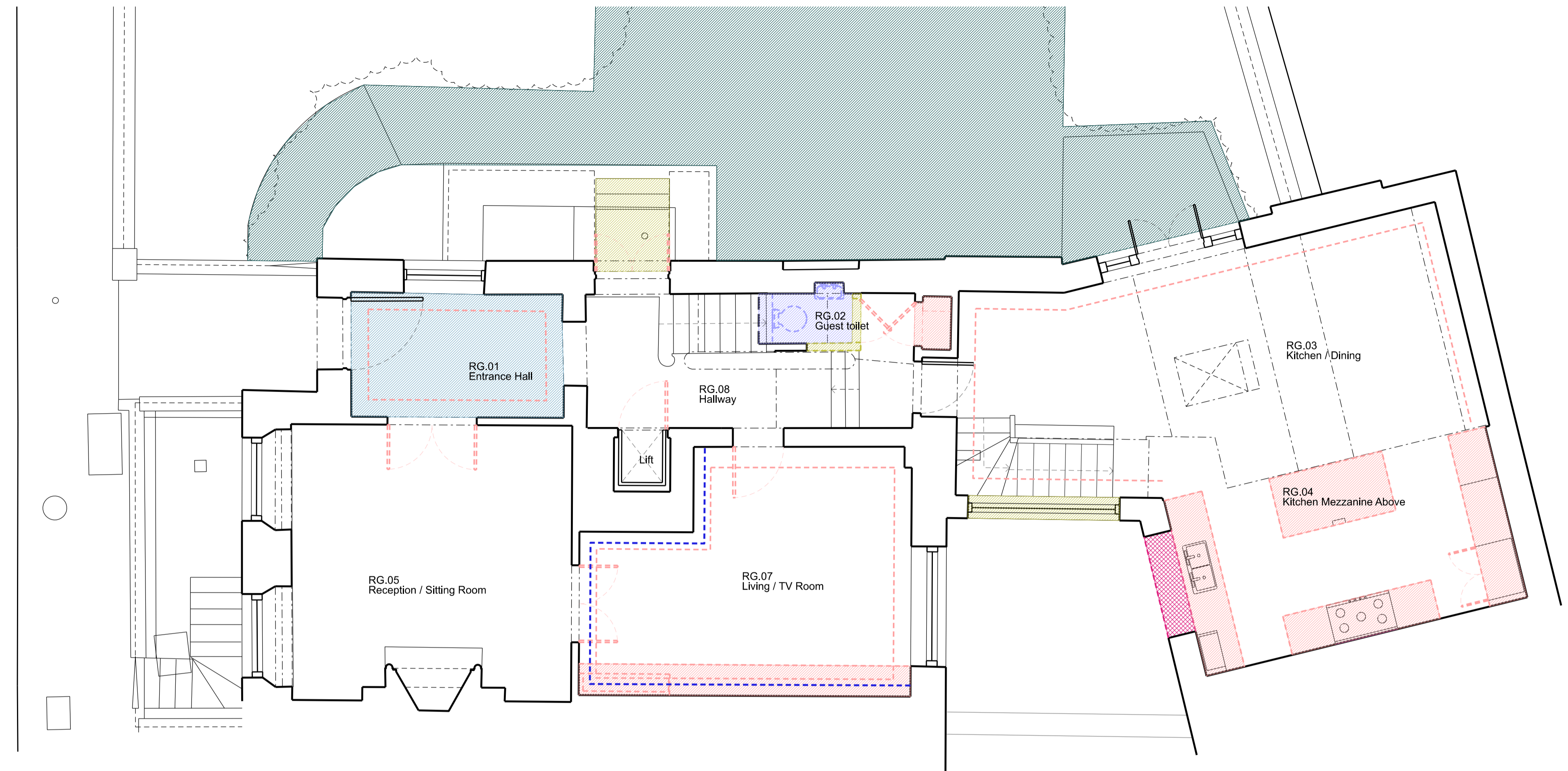
December 2019

Drawings as Issue ISS/1154/014

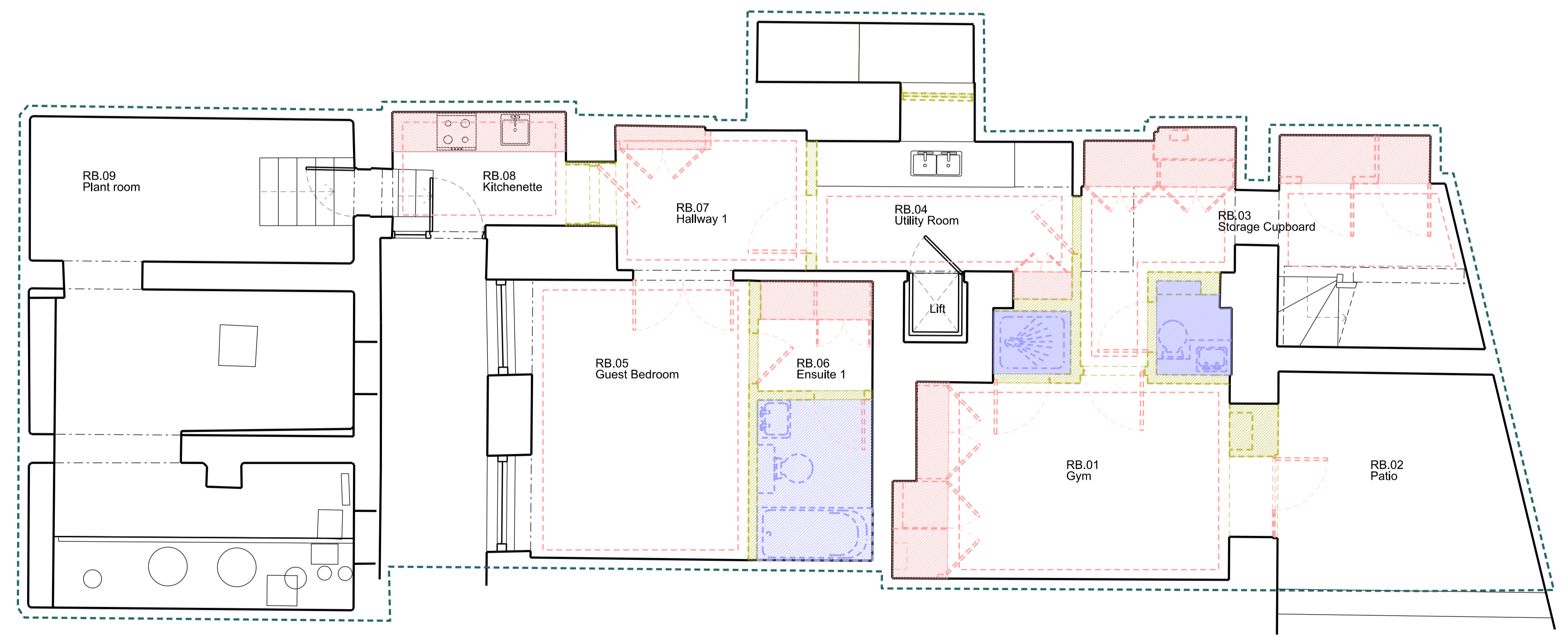
To scale for town planning purposes.
Not for construction.

Key for Strip Out & Demolition Works

- Removal of Structural Elements
- Removal of Non-Structural Elements
- Removal of Joinery Elements
- Removal of Sanitary Elements & Finishes
- Removal of Floor Finishes
- Removal of Cornice
- Removal of Lead Roof & lay new roof to new gradient as requested by The Crown Estates
- Form new opening for new skylight
- Removal of asphalt finish & re-lay new asphalt as requested by The Crown Estates
- Waterproofing of Basement subject to inspection



GROUND FLOOR



LOWER GROUND FLOOR

Rev	Amendment	Date
C	Planning Application & LBC	11/12/19
B	General Update	13/11/19
A	General Update	04/11/19

Key Plan

FOR PLANNING

Client
Jose & Daniela Neves

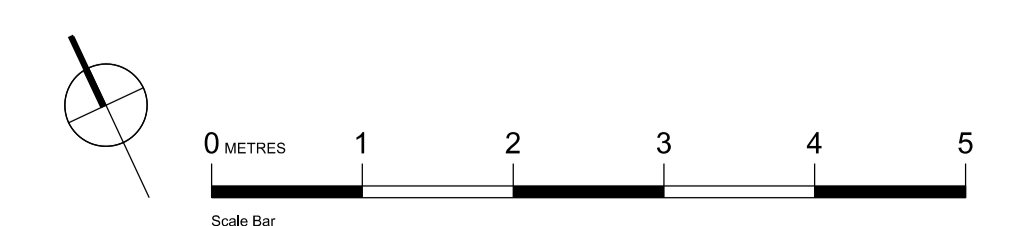
Project
**40 Chester Terrace
London NW1 4ND**

Title
**Proposed Strip Out & Demolition Works
Ground Floor Plan &
Lower Ground Floor Plan**

Drawn By	Checked By	Scale	Date
		1:50 @ A1	Aug 19

Drawing No	Revision
1154/En/50/001	C

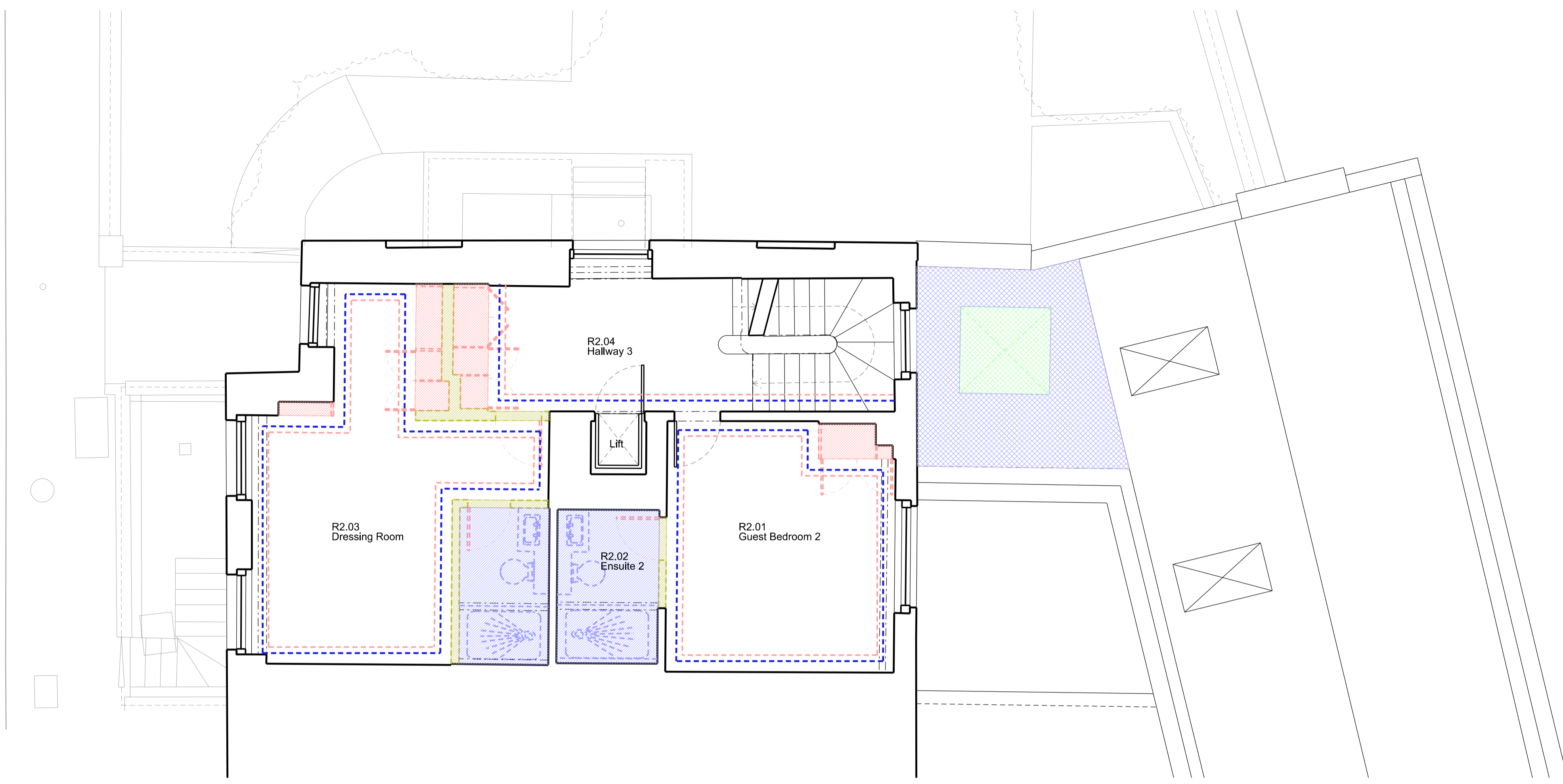
GROVES NATCHEVA ARCHITECTS



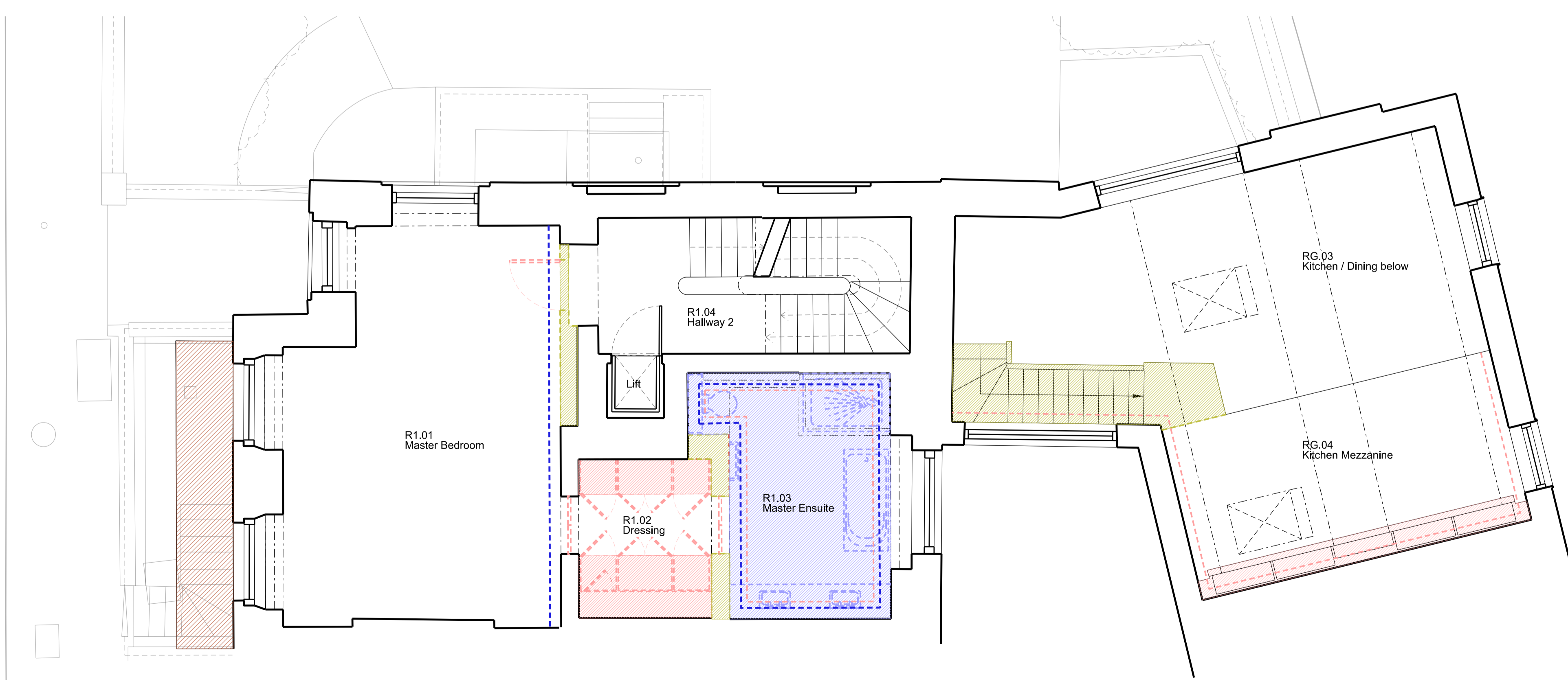
To scale for town planning purposes.
Not for construction.

Key for Strip Out & Demolition Works

- Removal of Structural Elements
- Removal of Non-Structural Elements
- Removal of Joinery Elements
- Removal of Sanitary Elements & Finishes
- Removal of Floor Finishes
- Removal of Cornice
- Removal of Lead Roof & lay new roof to new gradient as requested by The Crown Estate
- Form new opening for new skylight
- Removal of asphalt finish & re-lay new asphalt as requested by The Crown Estate
- Waterproofing of Basement subject to inspection



SECOND FLOOR



FIRST FLOOR

C	Planning Application & LBC	11/12/19
B	General Update	13/11/19
A	General Update	04/11/19

Rev	Amendment	Date
Key Plan		

FOR PLANNING

Client
Jose & Daniela Neves

Project
**40 Chester Terrace
London NW1 4ND**

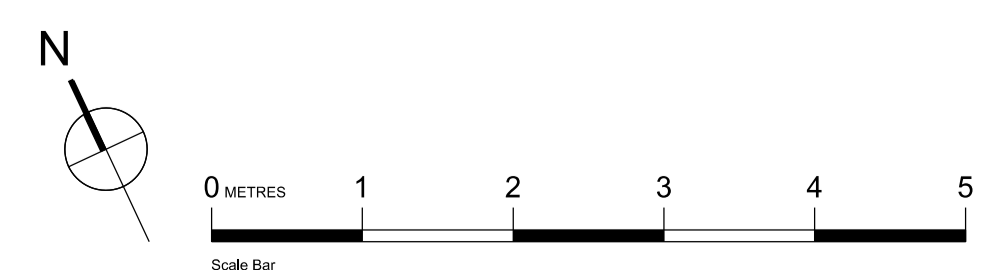
Title
**Proposed Stripp Out & Demolition Works
First Floor Plan &
Second Floor Plan**

Drawn By	Checked By	Scale	Date
		1:50 @ A1	Aug 19
Drawing No	Revision		
1154/En/50/002	c		

GROVES NATCHEVA ARCHITECTS

T: +44 (0)20 7937 7772
E: info@grovesnatcheva.com
W: www.grovesnatcheva.com

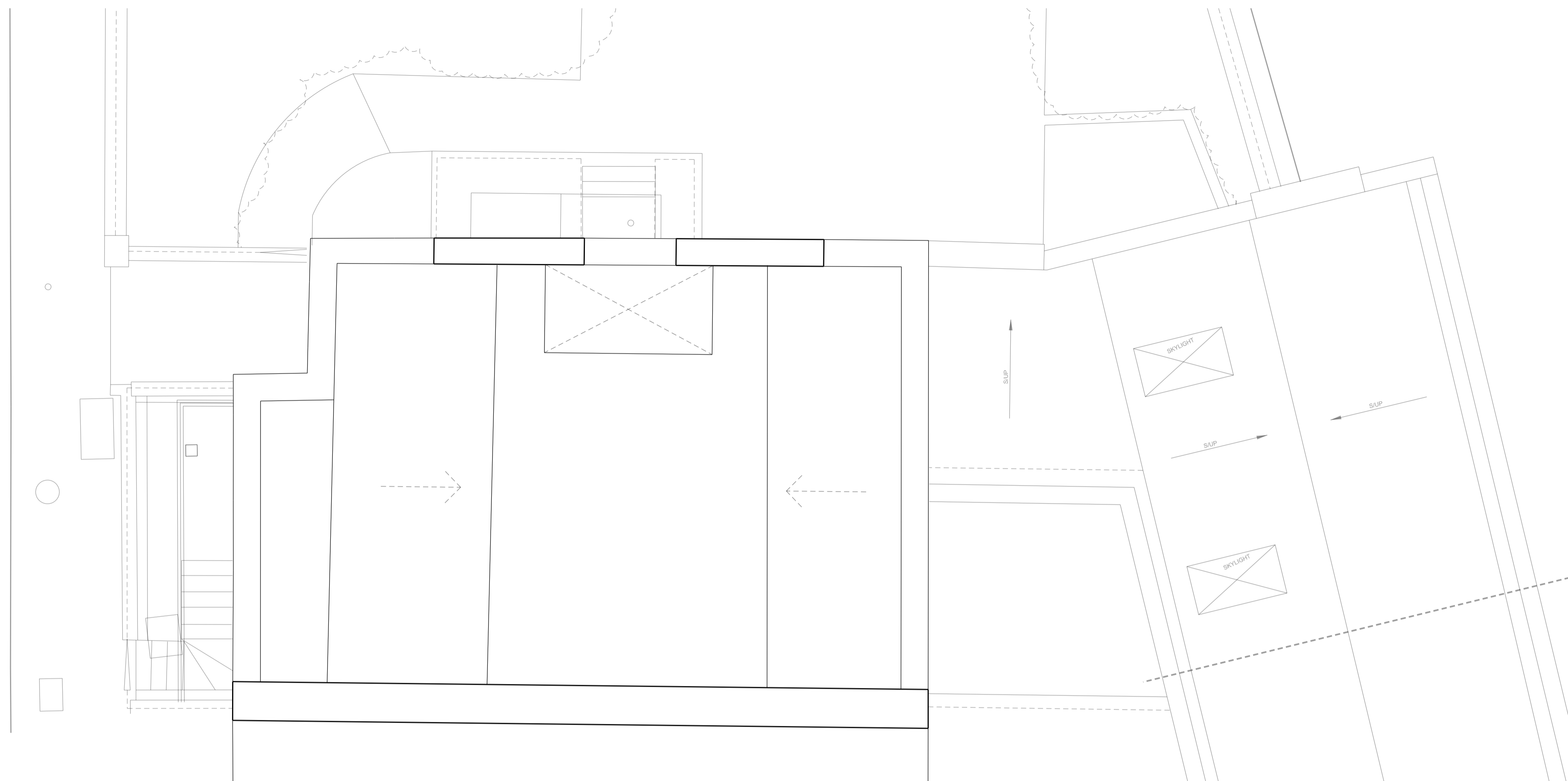
6 Kensington Court Mews London UK W8 5DR



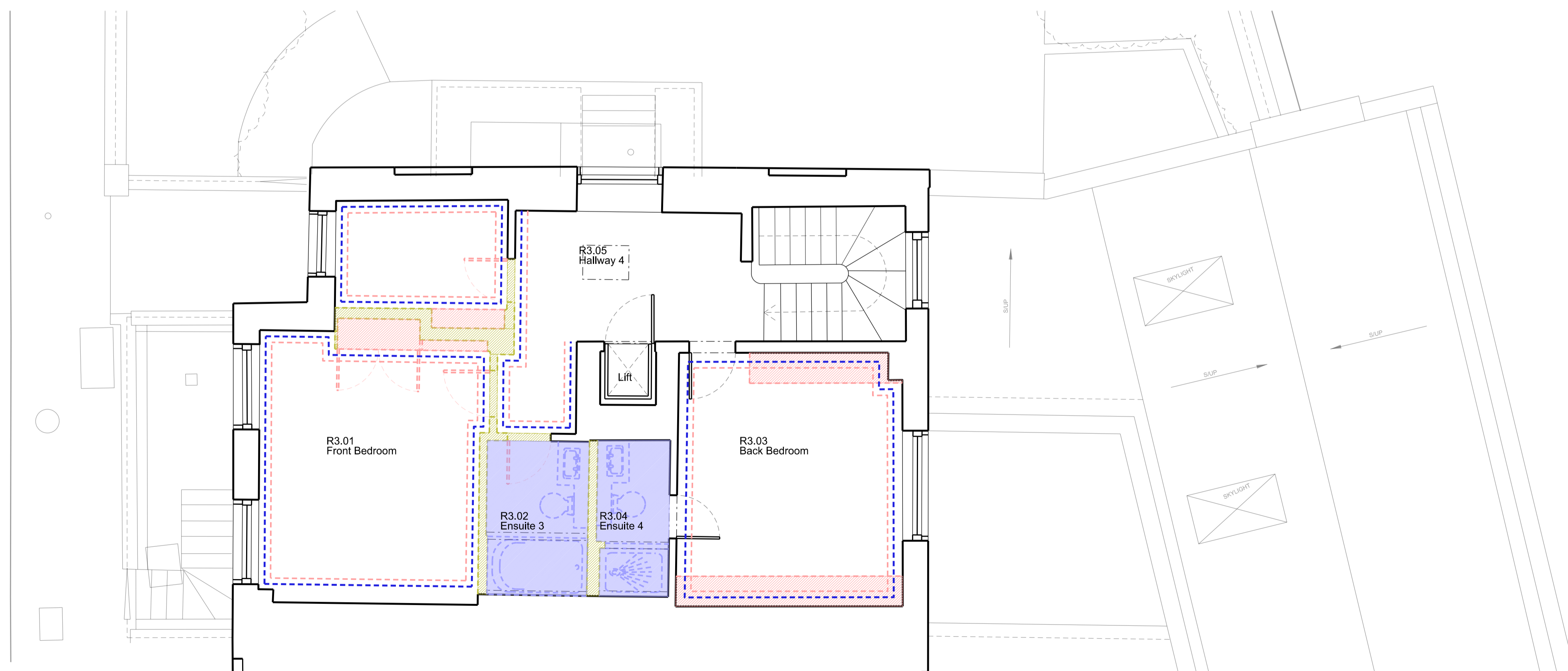
To scale for town planning purposes.
Not for construction.

Key for Strip Out & Demolition Works

	Removal of Structural Elements
	Removal of Non-Structural Elements
	Removal of Joinery Elements
	Removal of Sanitary Elements & Finishes
	Removal of Floor Finishes
	Removal of Cornice
	Removal of Lead Roof & lay new roof to new gradient as requested by The Crown Estates
	Form new opening for new Skylight
	Removal of asphalt finish & re-lay new asphalt as requested by The Crown Estates
	Waterproofing of Basement subject to inspection



ROOF PLAN



THIRD FLOOR

C	Planning Application & LBC	11/12/19
B	General Update	13/11/19
A	General Update	04/11/19
-		

Rev	Amendment	Date
Key Plan		

FOR PLANNING

Client
Jose & Daniela Neves

Project
40 Chester Terrace
London NW1 4ND

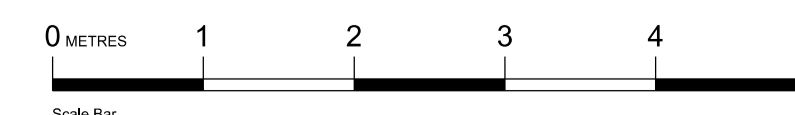
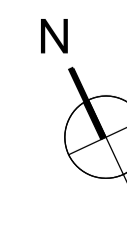
Title
Proposed Strip Out & Demolition Works
Third Floor Plan &
Roof Plan

Drawn By	Checked By	Scale	Date
		1:50 @ A1	Aug 19
Drawing No	Revision		
1154/En/50/003	C		

GROVES NATCHEVA ARCHITECTS

T: +44 (0)20 7937 7772
E: info@grovesnatcheva.com
W: www.grovesnatcheva.com

6 Kensington Court Mews London UK W8 5DR



To scale for town planning purposes.
Not for construction.

Key for Strip Out & Demolition Works

- Removal of Structural Elements
- Removal of Non-Structural Elements
- Removal of Joinery Elements
- Removal of Sanitary Elements & Finishes
- Removal of Floor Finishes
- Removal of Cornice
- Removal of Lead Roof & lay new roof to new gradient as requested by The Crown Estate
- Form new opening for new Skylight
- Removal of asphalt finish & relay new asphalt as requested by The Crown Estate
- Waterproofing of Basement subject to inspection

Cornice Level +24.38
 CFL +23.43
 FFL +20.98
 CFL +20.54
 FFL +17.80
 CFL +17.39
 FFL +13.91
 CFL +13.45
 FFL +12.27
 CFL +11.96
 FFL +10.00
 CFL +09.52
 FFL +07.22
 Datum +06.00



EXISTING SECTION A

EXISTING SECTION B

B	Planning Application & LBC	11/12/19
A	General Update	13/11/19
Rev	Amendment	Date

FOR PLANNING

Client
Jose & Daniela Neves

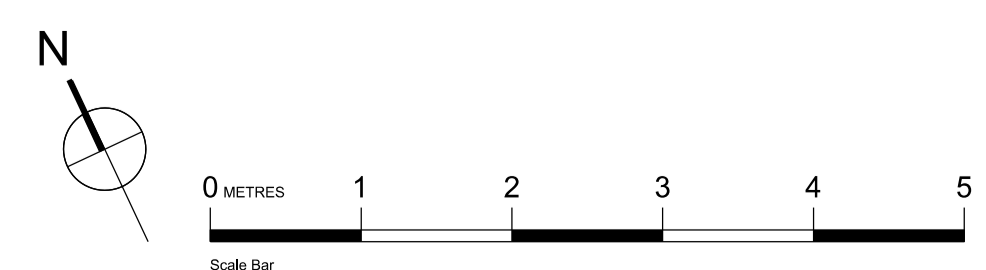
Project
40 Chester Terrace
London NW1 4ND

Title
Proposed Strip Out & Demolition Works
Section AA &
Section BB

Drawn By	Checked By	Scale	Date
		1:50 @ A1	

Drawing No	Revision
1154/En/50/004	B

GROVES NATCHEVA ARCHITECTS



GROVES NATCHEVA ARCHITECTS

*6 Kensington Court Mews
London W8 5DR
+44 (0) 207 937 7772
an@grovesnatcheva.com
www.grovesnatcheva.com*