

Data source - BGS Mapping - Scale 1:10,000



Scale at A3: 1:30,000

Coordinate System:
British National Grid
GCS_OSGB_1936

Legend

- London Borough of Camden
- Railway Lines
- A Roads

- #### BGS 1:10K Artificial Ground
- MADE GROUND
 - WORKED GROUND

- #### BGS 1:10K Drift Geology
- ALLUVIUM
 - HACKNEY GRAVEL FORMATION
 - LANGLEY SILT FORMATION
 - LYNCH HILL GRAVEL FORMATION
 - STANMORE GRAVEL FORMATION

- #### BGS 1:10K Solid Geology
- BAGSHOT FORMATION
 - CLAYGATE MEMBER
 - LAMBETH GROUP
 - LONDON CLAY FORMATION

NB: Geological boundaries are largely indicative based on available geological mapping data

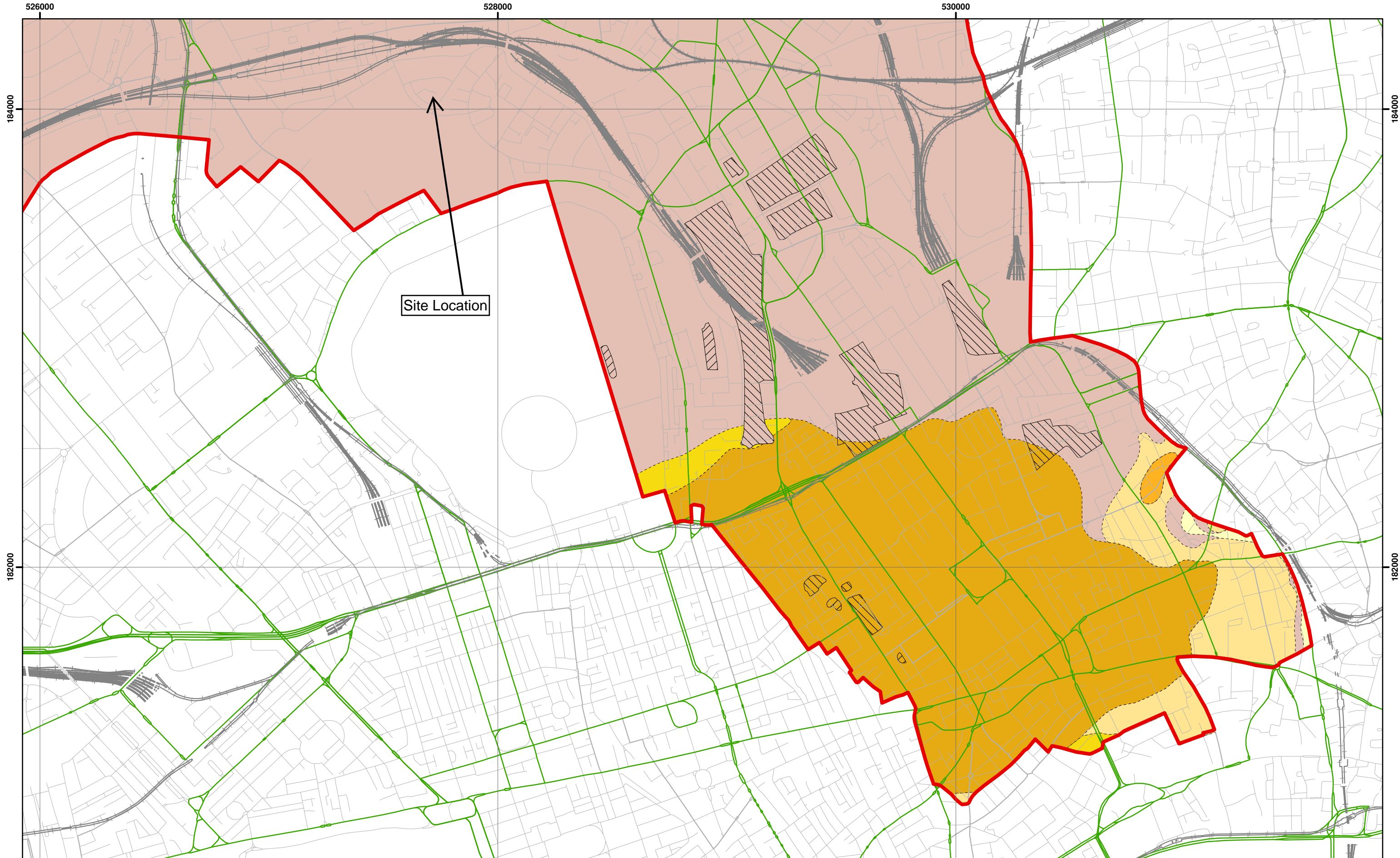
Camden Geological, Hydrogeological and Hydrological Study

Camden Geological Map

213923

FIGURE

3

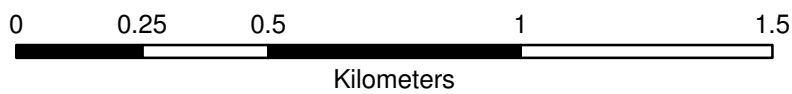


526000
Data source: BGS Mapping - Scale 1:10,000



Scale at A3: 1:15,000

Coordinate System:
British National Grid
GCS_OSGB_1936



Legend

- London Borough of Camden
- Railway Lines
- A Roads

- BGS 1:10K Artificial Ground**
- MADE GROUND
 - WORKED GROUND

- BGS 1:10K Drift Geology**
- ALLUVIUM
 - HACKNEY GRAVEL FORMATION
 - LANGLEY SILT FORMATION
 - LYNCH HILL GRAVEL FORMATION
 - STANMORE GRAVEL FORMATION

- BGS 1:10K Solid Geology**
- BAGSHOT FORMATION
 - CLAYGATE MEMBER
 - LAMBETH GROUP
 - LONDON CLAY FORMATION

Camden Geological, Hydrogeological and Hydrological Study

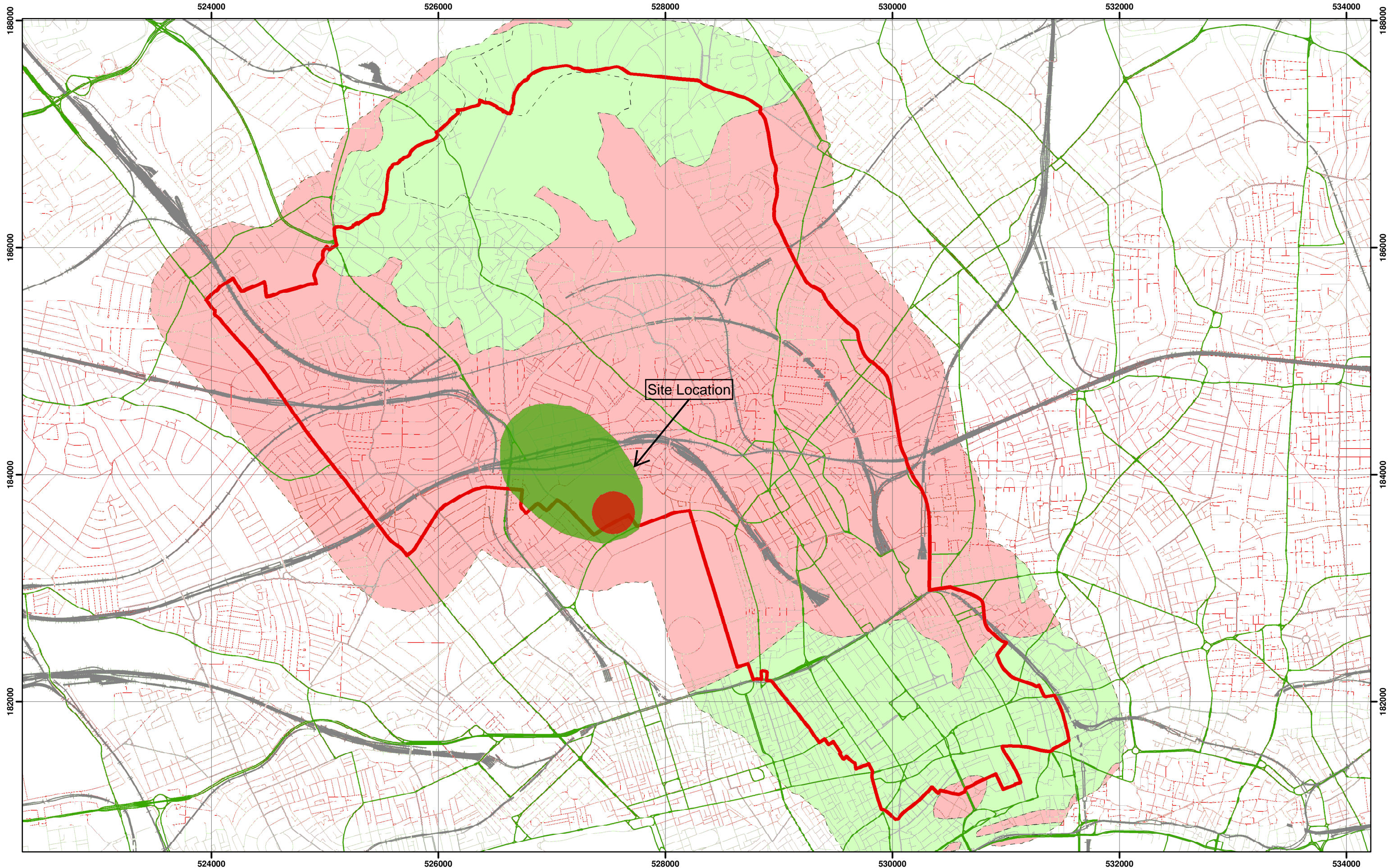
South Camden Geological Map

213923

FIGURE

5

NB. Geological boundaries are largely indicative based on available geological mapping data



Environment Agency Aquifer Designation based on BGS Mapping

Legend

- | | | |
|-------------------|----------------------------|-------------------------------|
| Borough of Camden | Aquifer Designation | Source Protection Zone |
| Railway Lines | Secondary A Aquifer | Outer Source Protection Zone |
| A Roads | Unproductive Strata | Inner Source Protection Zone |

NB. Aquifer boundaries are indicative based on available geological mapping data

**Camden Geological, Hydrogeological
and Hydrological Study**
Camden Aquifer Designation Map



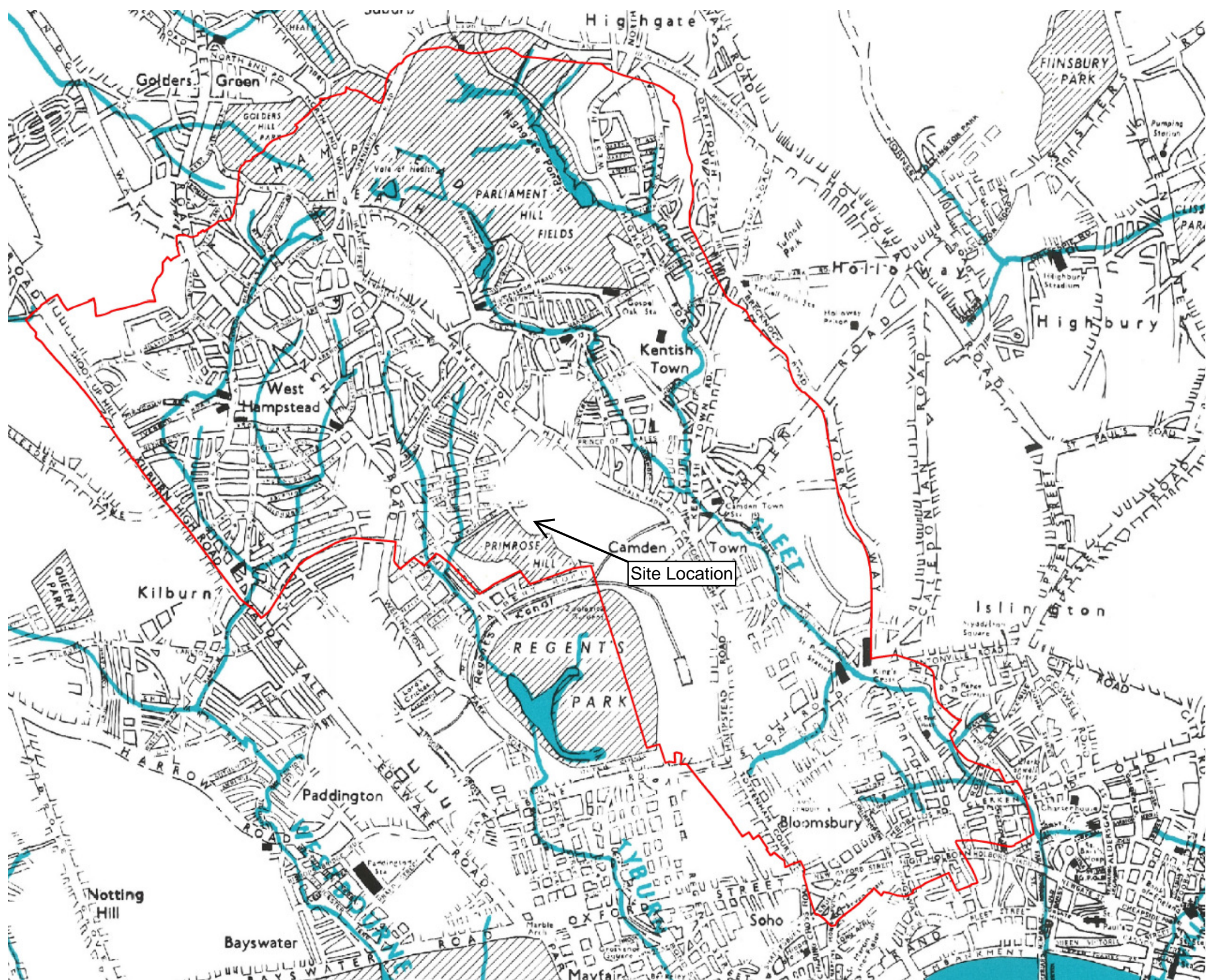
Scale at A3: 1:30,000

Coordinate System:
British National Grid
GCS_OSGB_1936



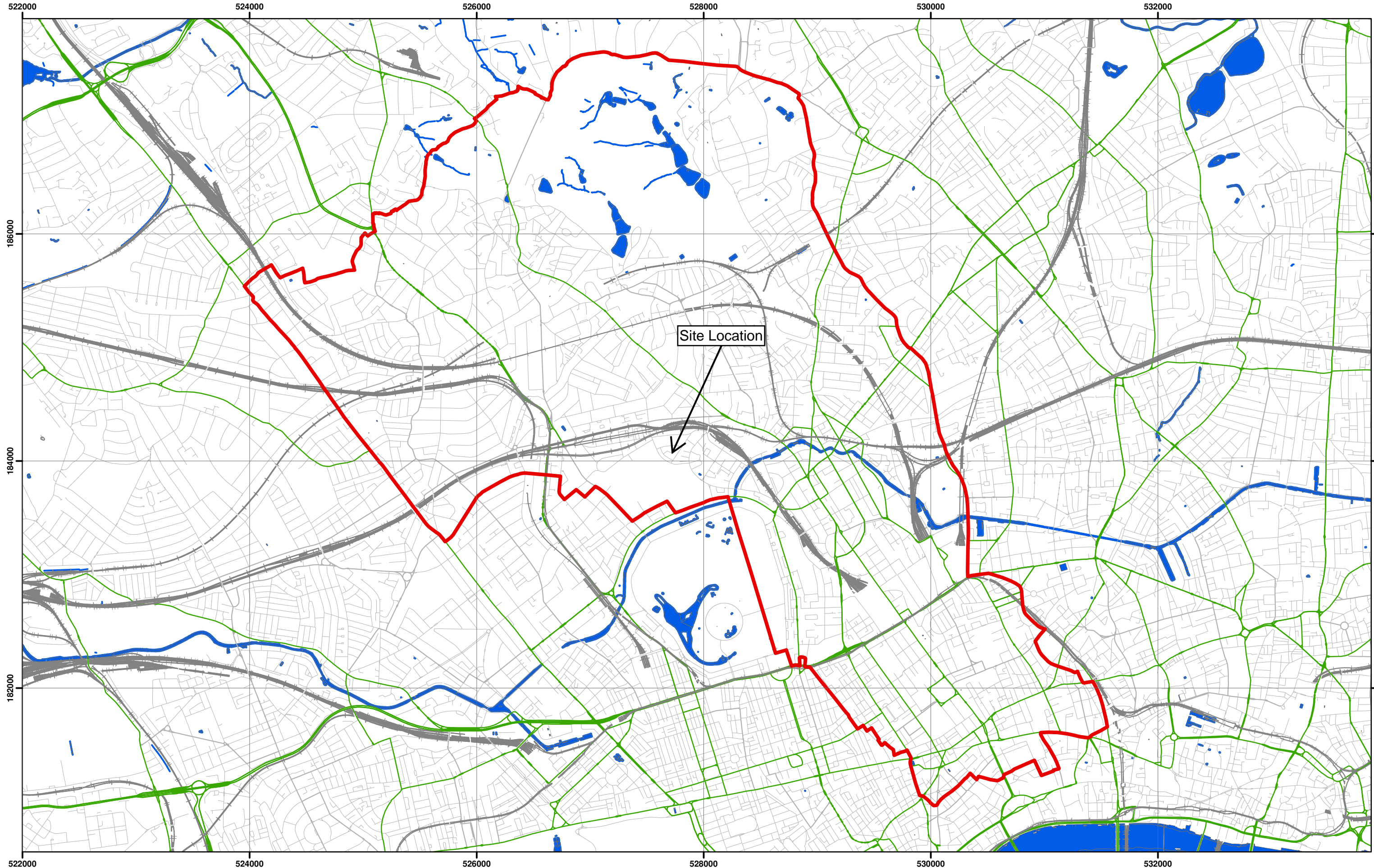
213923

FIGURE **8**



Camden Geological, Hydrogeological and Hydrological Study
Watercourses

Source – Barton, Lost Rivers of London



Data Source: London Borough of Camden, 2010



Scale at A3: 1:30,000

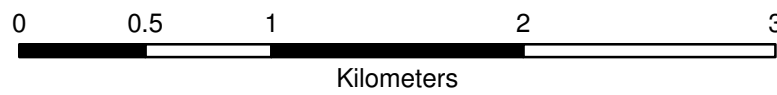
Coordinate System:
British National Grid
GCS_OSGB_1936

Legend

- ▭ London Borough of Camden
- Surface water
- Railway Lines
- A Roads

**Camden Geological, Hydrogeological
and Hydrological Study**

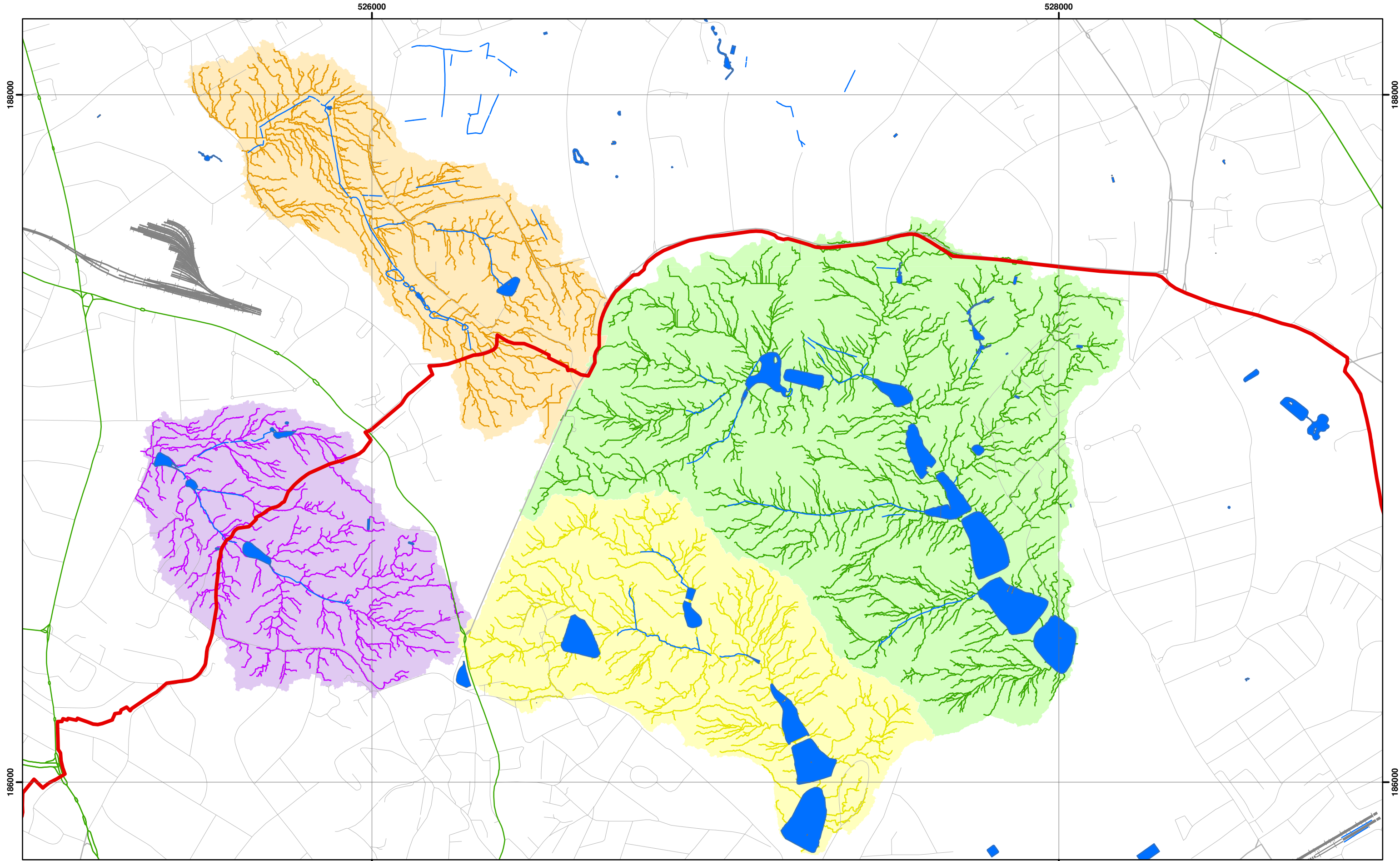
Camden Surface Water Features



213923

FIGURE

12



Catchments and Drainage after Haycock, 2010



Scale at A3: 1:10,000

Coordinate System:
British National Grid
GCS_OSGB_1936

Legend

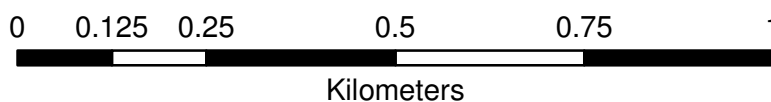
- London Borough of Camden
- Surface Water
- Railway Lines
- A Roads
- Highgate Chain Catchment
- Golders Hill Chain Catchment
- Hampstead Chain Catchment
- Hampstead Heath Extension Chain Catchment

Camden Geological, Hydrogeological and Hydrological Study

Hampstead Heath Surface Water
Catchments and Drainage

213923

FIGURE **14**



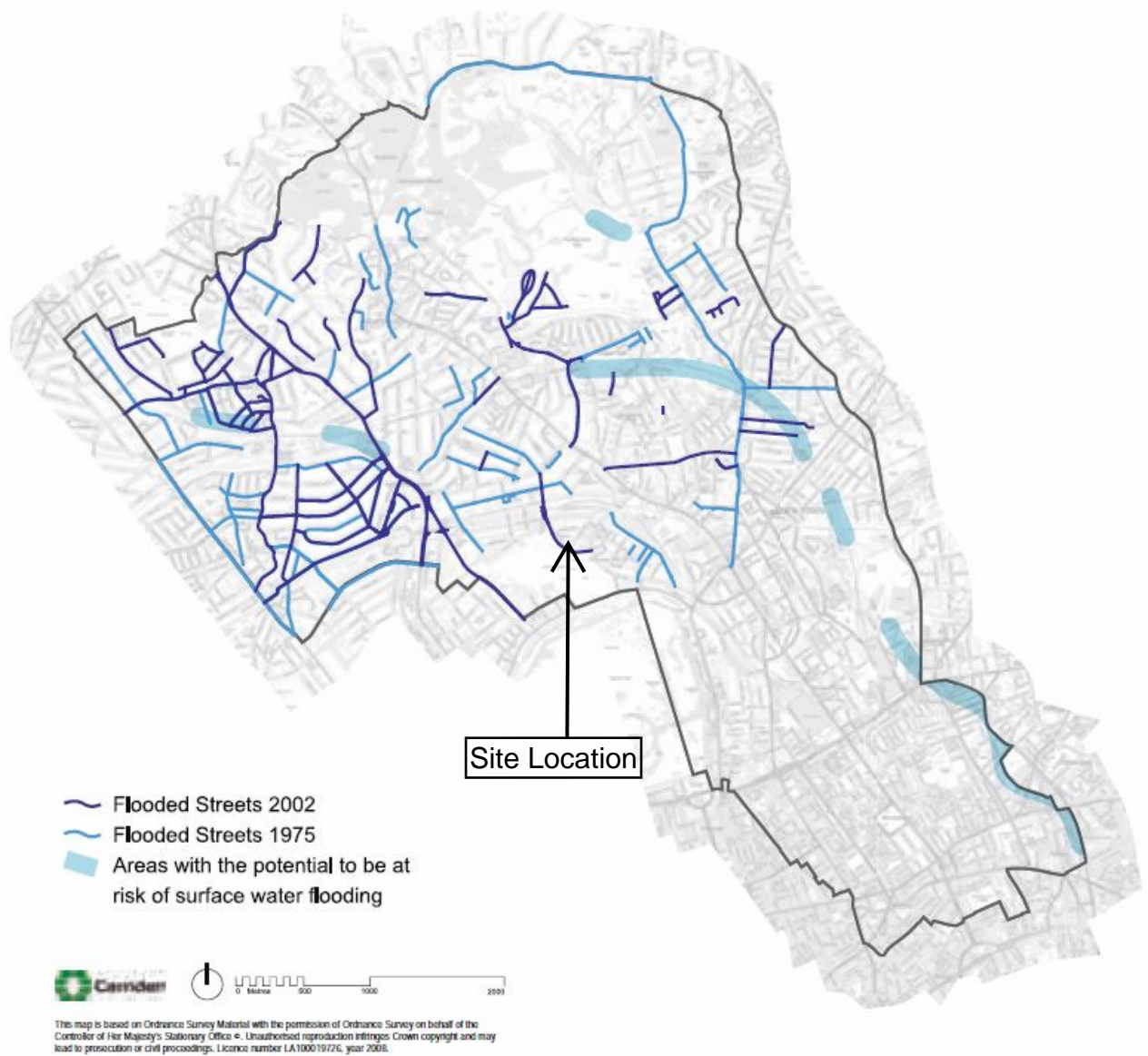
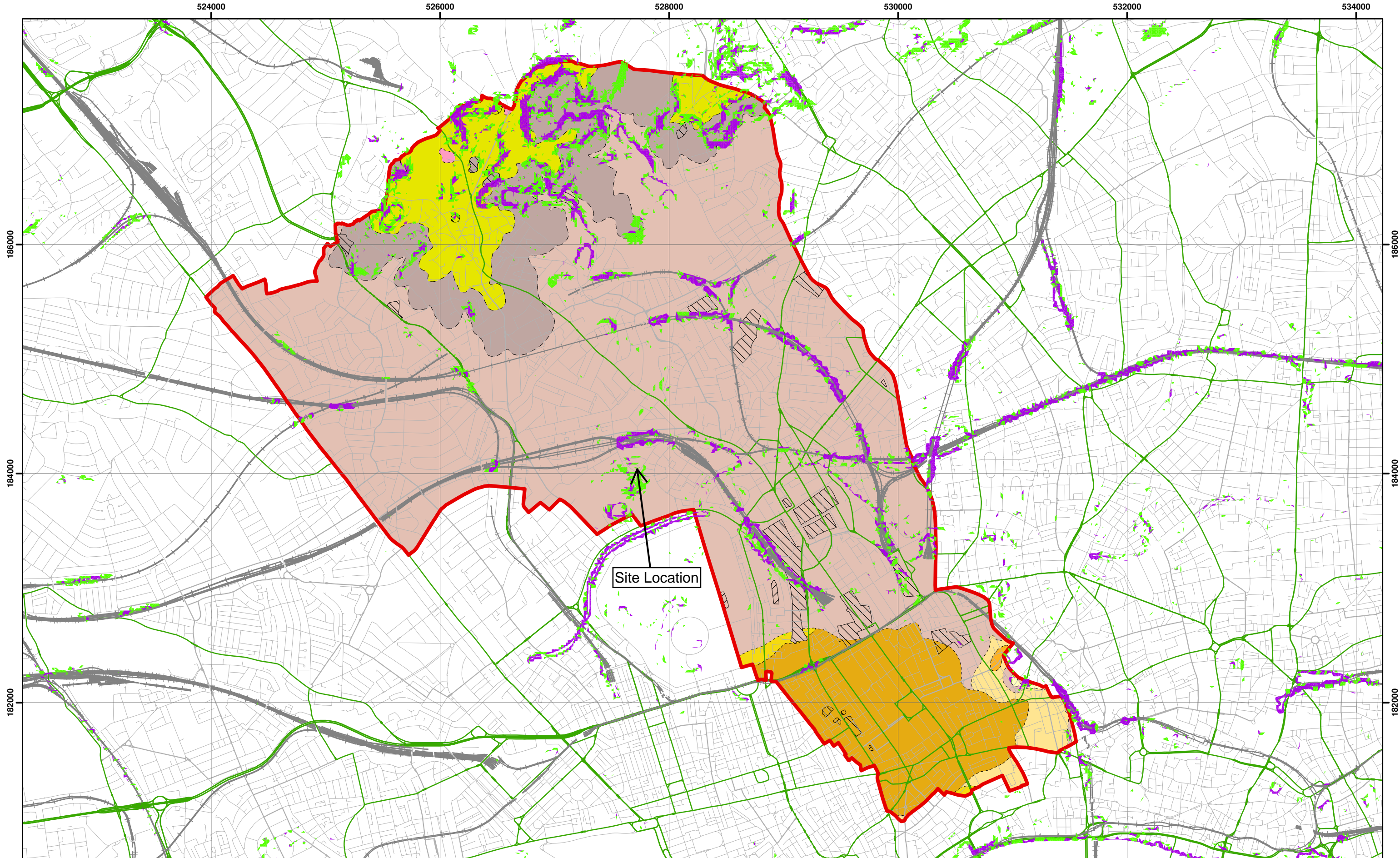


Figure 5 from Core Strategy, London Borough of Camden

Camden Geological, Hydrogeological and Hydrological Study Flood Map



Slope Angles calculated from Digital Terrain Model Provided By Camden Borough Council

N

0 0.5 1 2 3

Kilometers

Scale at A3: 1:30,000

1:10,000 BGS Mapping
Coordinate System:
British National Grid
GCS_OSGB_1936

Legend

Slope

- 0° - 7°
- 7° - 10°
- > 10°

London Borough of Camden

Railway Lines

A Roads

BGS 1:10K Artificial Ground

- MADE GROUND
- WORKED GROUND

BGS 1:10K Drift Geology

- ALLUVIUM
- HACKNEY GRAVEL FORMATION
- LANGLEY SILT FORMATION
- LYNCH HILL GRAVEL FORMATION
- STANMORE GRAVEL FORMATION

BGS 1:10K Solid Geology

- BAGSHOT FORMATION
- CLAYGATE MEMBER
- LAMBETH GROUP
- LONDON CLAY FORMATION

NB. Geological boundaries are largely indicative based on available geological mapping data

Camden Geological, Hydrogeological and Hydrological Study

Slope Angle Map

213923

FIGURE

16



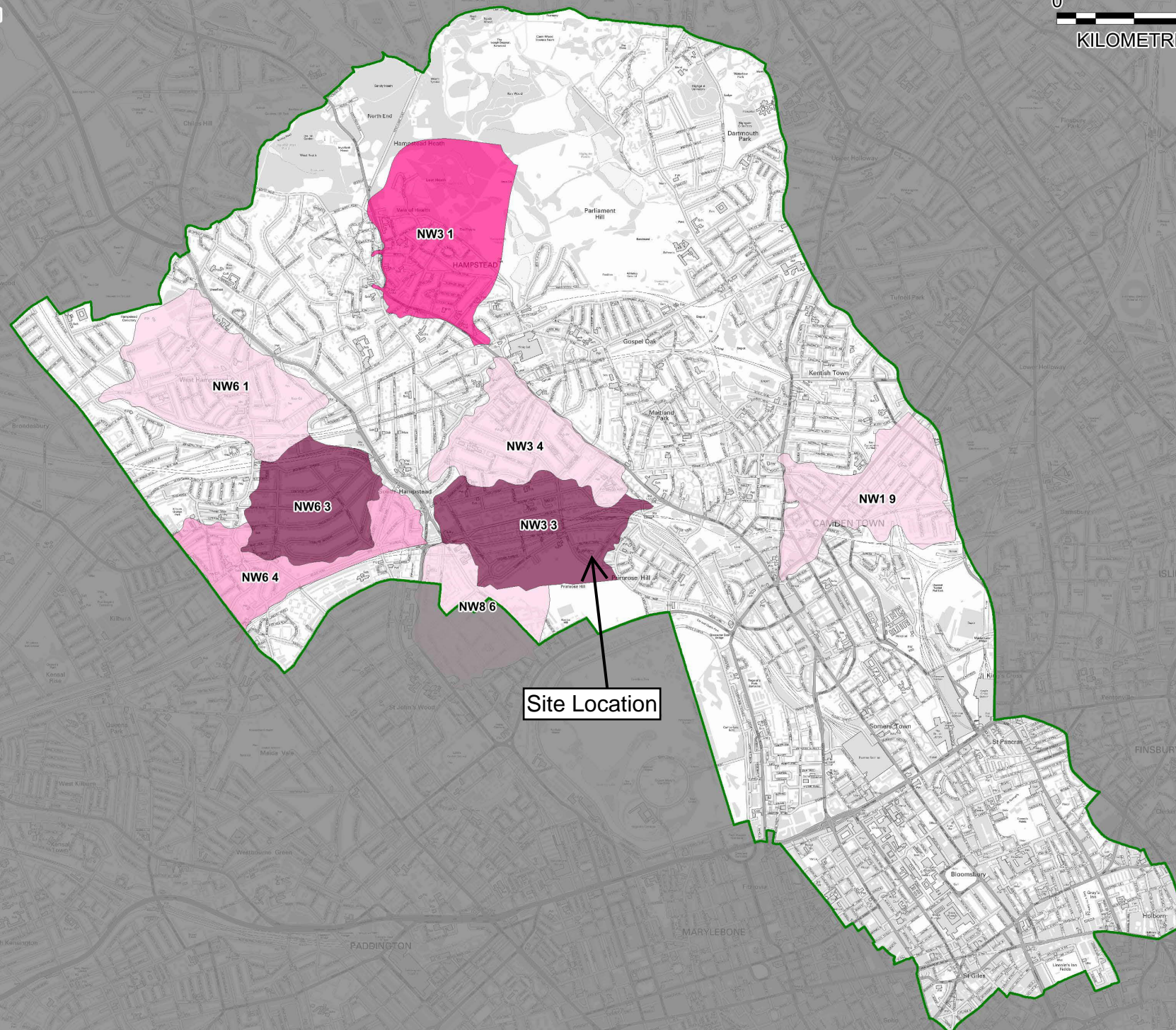
0 1
KILOMETRES

THIS DRAWING IS TO BE USED ONLY FOR THE PURPOSE OF
ISSUE THAT IT WAS ISSUED FOR AND IS SUBJECT TO AMENDMENT

LEGEND

London Borough
Camden Boundary

Internal Sewer Flooding
No. of Properties affected



Contains Ordnance Survey data © Crown copyright
and database right 2014

Revision Details

By Check Date Suffix

Purpose of Issue

FINAL

Client

Project Title
LONDON BOROUGH OF
CAMDEN STRATEGIC FLOOD
RISK ASSESSMENT

Drawing Title
DG5 Internal Sewer Flooding

Drawn CB Checked JS Approved MT Date 03/07/2014

URS Internal Project No. 47070547 Scale at A3 1:40,000

THIS DOCUMENT HAS BEEN PREPARED PURSUANT TO AND SUBJECT TO THE
TERMS OF URS' APPOINTMENT BY ITS CLIENT. URS ACCEPTS NO LIABILITY FOR
ANY USE OF THIS DOCUMENT OTHER THAN BY ITS ORIGINAL CLIENT OR
FOLLOWING URS' EXPRESS AGREEMENT TO SUCH USE, AND ONLY FOR THE
PURPOSES FOR WHICH IT WAS PREPARED AND PROVIDED.

URS Infrastructure & Environment UK Limited
6, 8 Grosvenor Place
London
SW1P 3PL
Telephone +44 (0)207 7865000
Fax +44 (0)207 7865001
www.ursglobal.com

Drawing Number
FIGURE 5a

Rev
Rev 1