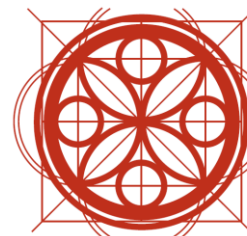


SAMPLE APPROVAL	CLIENT INITIALS
A- Accepted	
B- Accepted with Comments	
C- Rejected	



By Appointment To HM The Queen
Building Façade Restoration
and Conservation
PAYE Stonework & Restoration Ltd
London



PAYE

Camden Town Hall

SAMPLE ISSUE SHEET # 002

Distribution List: D.Silva (Lendlease), M.Dance (Lendlease), D.Manktelow (PAYE), T.Harvey (PAYE), D.Johnstone (PAYE), W.Wilson (PAYE)

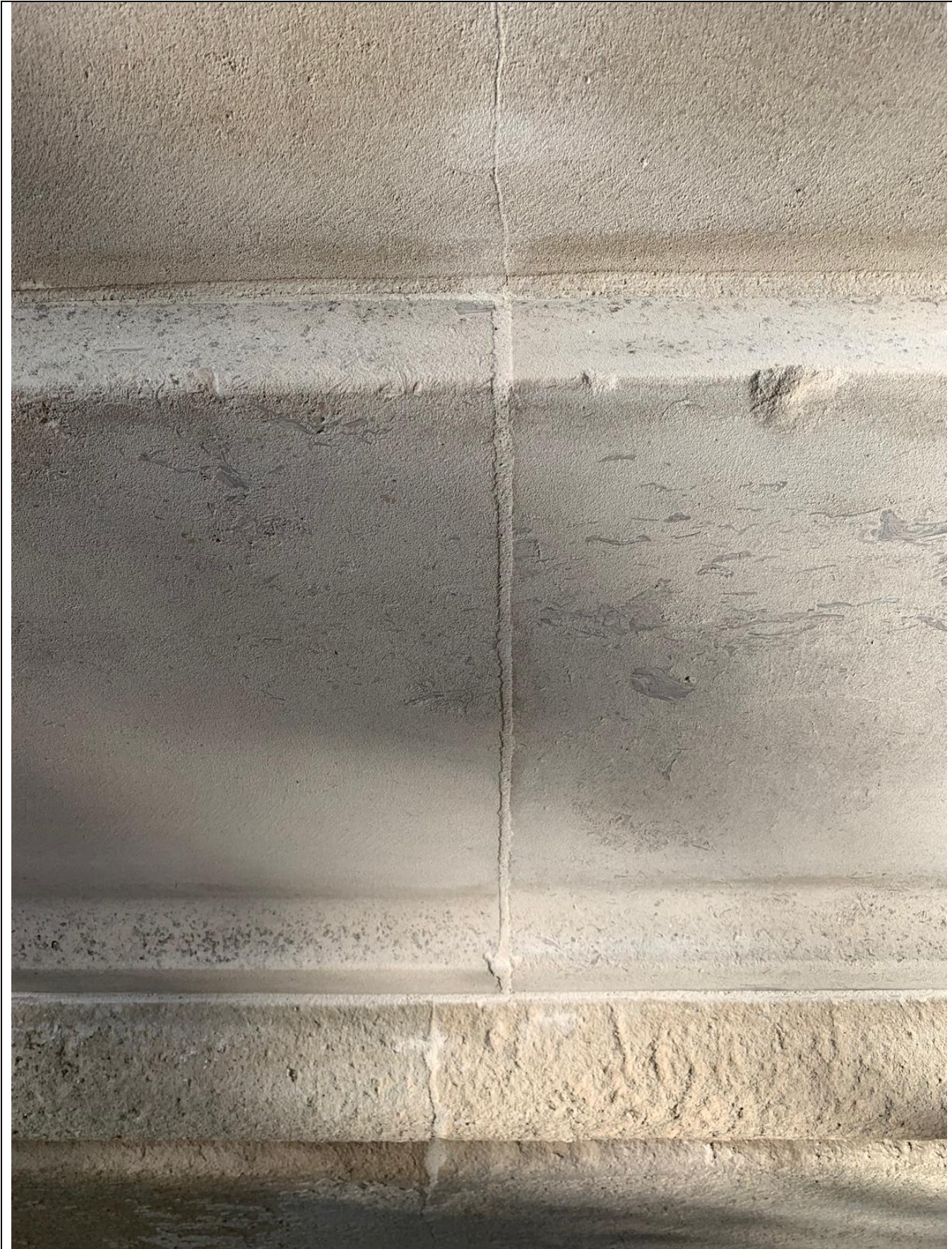
Job Number: 19023

Date of issue: July 4, 2019

Sample Ref #: 19038-SAMPLE-002

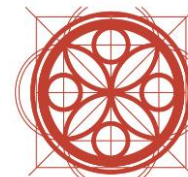


Pointing Sample Panel Area









Pointing sample panel; repointing loose and open joints and hairline cracks within stone units using a portland stone dust, fine sand and NHL3.5 lime premixed mortar.

Note: Natural materials are subject to variation in colour, pattern and/or texture. Samples can only be seen as being representative of current production and cannot be guaranteed.

BOQ item Ref: 2.03, 2.04

	Signed	Printed
Signed on behalf of Client:		
Signed on behalf of PAYE:		Daniel Johnstone
Date:	04/07/2019	04/07/2019