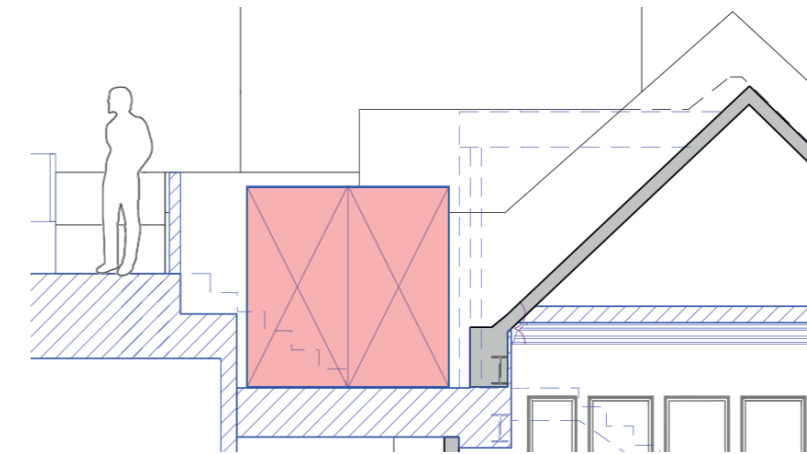


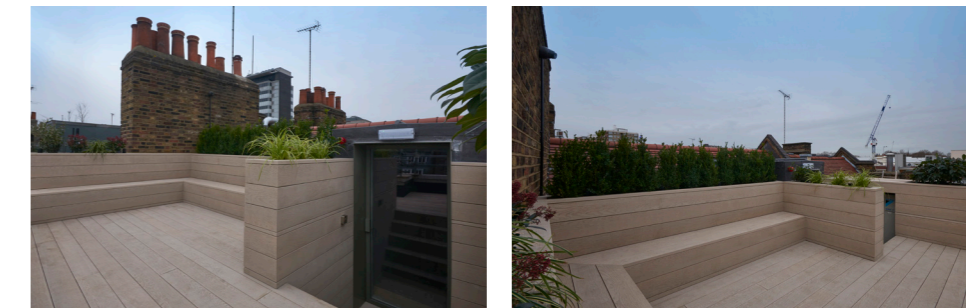
Louvred AC enclosure

AC unit sits on lowered landing level of + 32.230 (- 650mm than previously proposed).
Proposed FFL for accessible areas of roof terrace + 37.250 (to match no.14).



Timber decking & planting

Finishes to floor level, seats & planters to replicate no.14 (pictured below).
Planting selection as per ecologists recommendations.



Removable stair

Stair flight to roof terrace (highlighted yellow) removable to allow maintenance access to lower level of AC unit.

15 Great James Street - Roof Terrace Massing

