

NOTES

1. DO NOT SCALE FROM THIS DRAWING
2. THE CONTRACTOR MUST VERIFY ALL DIMENSIONS, TOLERANCES AND REFERENCES BEFORE PROCEEDING WITH WORKS.
3. ANY DISCREPANCY FOUND BETWEEN THIS DRAWING AND ANY OTHER DOCUMENTS MUST BE REPORTED IMMEDIATELY TO THE CONTRACT ADMINISTRATOR.
4. REMOVE THIS DRAWING FROM CURRENCY WHEN REVISED DRAWINGS IS ISSUED.
5. COPYRIGHT OF DESIGNS SHOWN ON THIS DRAWING REMAINS WITH SMITHSQUARED CONSULTING LTD.
6. THIS DRAWING IS TO BE READ IN CONJUNCTION WITH THE SPECIFICATION AND ALL OTHER CONTRACT PROJECT DOCUMENTS.
7. THE CONTRACTOR SHALL REFER TO ARCHITECTS OR CEILING DRAWINGS FOR DETAILS OF CEILING GRILLES FOR SETTING OUT ALL VISIBLE WALL AND CEILING MOUNTED EQUIPMENT.

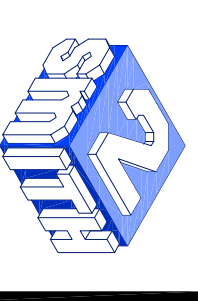
LEGBND

- DENOTES CIRCULAR SUPPLY DUCTWORK
- DENOTES RECTANGULAR SUPPLY DUCTWORK
- DENOTES RECTANGULAR EXTRACT DUCTWORK
- DENOTES DUCT MOUNTED SUPPLY GRILLE
- DENOTES CEILING MOUNTED SUPPLY GRILLE
- DENOTES CEILING MOUNTED EXTRACT GRILLE
- DENOTES WALL MOUNTED TRANSFER GRILLE
- DENOTES DOOR TRANSFER GRILLE
- DENOTES FIRE DAMPER
- DENOTES ATTENUATOR
- DENOTES AC CASSETTE UNIT
- DENOTES CHASSIS CEILING AC UNIT
- DENOTES CHASSIS CEILING AC UNIT
- DENOTES AC BRANCH CONTROLLER UNIT
- DENOTES AC DX PREWORK
- DENOTES HEAT EXITTER
- DENOTES CEILING HEATER PANEL

NOTE
ALL DUCTS PASSING THROUGH FIRE RATED ELEMENTS SHALL BE PROVIDED WITH SUMBER RATED FIRE DAMPERS AS SPECIFICATION
ANY DUCT SIZES & HEIGHTS PROPOSED ARE INDICATIVE FOR INFORMATION ONLY. THE CONTRACTOR SHALL BE RESPONSIBLE FOR ALL DUCT SIZING, PIPE SIZING AND EQUIPMENT SELECTIONS.

No.	REVISION	CHK	DATE
T1	TENDER ISSUE	RLS	DEC 19
P5	PRELIMINARY	RLS	DEC 19
P4	PRELIMINARY	RLS	NOV 19
P3	PRELIMINARY	RLS	NOV 19
P2	PRELIMINARY	RLS	NOV 19
P1	PRELIMINARY	RLS	OCT 19

THIS DRAWING IS BASED ON THE FOLLOWING INFORMATION:-
ARCHITECTS DRAWINGS AND SPECIFICATION
STRUCTURAL DRAWINGS NO.



SMITHSQUARED CONSULTING LTD
36 Windsor Park
Thames Ditton
Surrey, KT7 0HL
tel: 020-8398 2017
email: post@smithsquared.co.uk

CLIENT
LATIS GROUP LTD

PROJECT
**15 GREAT JAMIES STREET
LONDON
WC1N 3DP**

TITLE
**INDICATIVE MECHANICAL SERVICES
PROPOSED LONGITUDINAL SECTION
A - A**

DATE
AUGUST 2019

SCALE
1 to 50 @ A1

DRAWN
BS

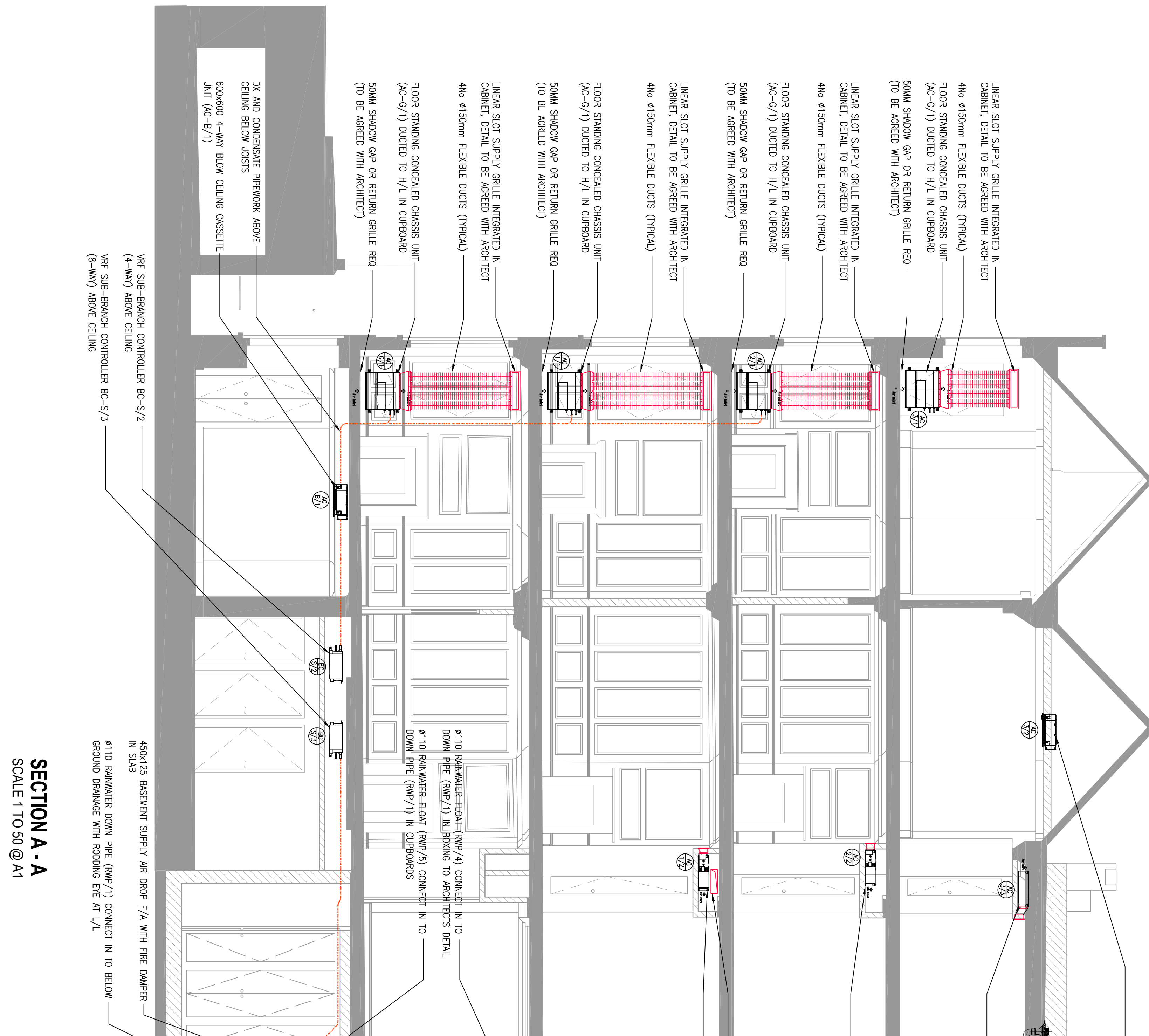
CHECKED
MS

DRAWING STATUS
PRELIMINARY

DRAWING No.
3399-M04

REVISION
T1

WORK IN PROGRESS



SECTION A - A
SCALE 1 TO 50 @ A1

600x600 4-WAY BLOW CEILING CASSETTE UNIT (AC-3/2)

ROOF OUTLET GULLY AS ARCHITECTS DETAIL, CONNECT IN TO #110 RAINWATER DOWN PIPE (RWP/1)

#110 RAINWATER DOWN PIPE (RWP/1) POSITION IN BOXING TO ARCHITECTS DETAIL

ULTRA THIN CEILING CONCEALED CHASSIS UNIT (AC-2/2) DUCTED TO LINEAR GRILLE ON FACE OF BULKHEAD

ULTRA THIN CEILING CONCEALED CHASSIS UNIT (AC-3/3) DUCTED TO LINEAR GRILLE ON FACE OF BULKHEAD

#110 RAINWATER DOWN PIPE (RWP/1) POSITION IN BOXING TO ARCHITECTS DETAIL

450MM X 125MM SUPPLY DUCT

ULTRA THIN CEILING CONCEALED CHASSIS UNIT (AC-1/2) DUCTED TO LINEAR GRILLE ON FACE OF BULKHEAD

1100mm WIDE x 250mm HIGH EXHAUST LOUVER (0.27sqm)

#315mm EXHAUST DUCT

350x125 SUPPLY DUCT BEHIND 400x200 EXHAUST DUCT

ROOF OUTLET GULLY AS ARCHITECTS DETAIL, CONNECT IN TO #110 RAINWATER DOWN PIPE (RWP/4) BELOW

1250mm WIDE x 250mm HIGH FRESH AIR LOUVER (0.3sqm)

500x200mm FRESH AIR INTAKE DUCT

SUBSCRIPTION AREA HEAT RE-COOL VENTILATION UNIT (DUPLICATION FLEXI DV1600)

ROOF OUTLET GULLY AS ARCHITECTS DETAIL, CONNECT IN TO #110 RAINWATER DOWN PIPE (RWP/5) BELOW

LINEAR SLOT TYPE SUPPLY GRILLE INTEGRATED IN CUPBOARDS (DETAIL TO BE AGREED WITH ARCHITECT)

4No #150mm FLEXIBLE DUCTS (TYPICAL)

#110 RAINWATER DOWN PIPE (RWP/5)

VERTICAL CONCEALED CHASSIS UNIT (TYPICAL) DUCTED TO H/L SLOTS IN CUPBOARDS

PURPOSE FABRICATED INTAKE PLENUM TO AC UNITS TO FACILITATE FRESH AIR DUCT CONNECTION AND FILTER HOUSING (NOTE RETURN AIR TO BE VIA 50mm SLOTS IN BASE OF CUPBOARDS TO ARCHITECTS DETAIL)

#110 RAINWATER DOWN PIPE (RWP/5) OFFSETS AT H/L

LINEAR SLOT TYPE SUPPLY & RETURN AIR GRILLES INTEGRATED IN CUPBOARDS (DETAIL TO BE AGREED WITH ARCHITECT)

4No #150mm FLEXIBLE DUCTS (TYPICAL)

VERTICAL CONCEALED CHASSIS UNIT (TYPICAL) DUCTED TO H/L SLOTS IN CUPBOARDS

PURPOSE FABRICATED INTAKE PLENUM TO AC UNITS TO FACILITATE FRESH AIR DUCT CONNECTION AND FILTER HOUSING (NOTE RETURN AIR TO BE VIA 50mm SLOTS IN BASE OF CUPBOARDS TO ARCHITECTS DETAIL)

250x125 FRESH AIR SUPPLY DUCT CONNECT TO AC UNIT INTAKE PLENUM (TYPICAL)

350x150 GROUND FLOOR RETURN AIR VIA SLOTS IN BASE OF CUPBOARDS (AS ARCHITECTS DETAIL)

BASEMENT RETURN AIR VIA SLOTTED GRILLES TO MATCH SUPPLY (AS ARCHITECTS DETAIL)

450x125 BASEMENT RETURN AIR RISE 1/A WITH FIRE DAMPER IN SLAB

450x125 BASEMENT SUPPLY AIR DROP F/A WITH FIRE DAMPER IN SLAB

450x125 BASEMENT SUPPLY AIR DROP F/A WITH FIRE DAMPER IN SLAB

#110 RAINWATER DOWN PIPE (RWP/1) CONNECT IN TO BELOW GROUND DRAINAGE WITH ROODING EYE AT L/L

REF SUB-BRANCH CONTROLLER BC-S/2 (4-WAY) ABOVE CEILING

REF SUB-BRANCH CONTROLLER BC-S/3 (8-WAY) ABOVE CEILING

DX AND CONDENSATE PIPework ABOVE CEILING BELOW JOISTS

600x600 4-WAY BLOW CEILING CASSETTE UNIT (AC-8/1)