

PLANTING SCHEDULE
 RB - Root balled; AP - Air Pot; BR - Bare root; CG - Container grown
 All plants to comply with National Plant Specification, BS 3936, BS 4043 and HTA Standards

TREE PLANTING					
Quantity	Species	Category	Girth (cm)	Height (cm)	Notes
1	Sorbus hupehensis	RB/ AP	18-20	min. 300-350	Feathered, spread 150-200 cm, 3x tr

Quantity	Species (all CG)	Pot size (L)	Planting density (/m ²)	Height (cm)	Notes
HERBACEOUS MIX "01A"					
35	Anemanthele lessoniana	2/3L	7	n/a	Plant in informal groups of 3-5
12	Anemone x hybrida 'Honorine Jobert'	2/3L	7	n/a	Plant in informal groups of 3-5
25	Cirsium rivulare	2/3L	7	n/a	Plant in informal groups of 3-5
25	Dianthus carthusianorum	2/3L	7	n/a	Plant in informal groups of 3-5
12	Dryopteris erythrosora	2/3L	7	n/a	Plant in informal groups of 3-5
12	Echinacea 'Pink Parasol'	2/3L	7	n/a	Plant in informal groups of 3-5
12	Erigeron karvinskianus	2/3L	7	n/a	Plant in informal groups of 3-5
12	Eupatorium cannabinum	2/3L	7	n/a	Plant in informal groups of 3-5
25	Gaura lindheimerii	2/3L	7	n/a	Plant in informal groups of 3-5
25	Hakonechloa macra	2/3L	7	n/a	Plant in informal groups of 3-5
12	Helleborus x orientalis cult.	2/3L	7	n/a	Plant in informal groups of 3-5
20	Leycanthemum vulgare	2/3L	7	n/a	Plant in informal groups of 3-5
20	Liriope muscari	2/3L	7	n/a	Plant in informal groups of 3-5
HERBACEOUS MIX "01B"					
20	Anemanthele lessoniana	2/3L	7	n/a	Plant in informal groups of 3-5
14	Dryopteris erythrosora	2/3L	7	n/a	Plant in informal groups of 3-5
20	Hakonechloa macra	2/3L	7	n/a	Plant in informal groups of 3-5
7	Helleborus x orientalis cult.	2/3L	7	n/a	Plant in informal groups of 3-5
7	Polystichum setiferum	2/3L	7	n/a	Plant in informal groups of 3-5
6	Anemone x hybrida 'Whirlwind'	2/3L	3	n/a	Plant in informal groups of 3-5
6	Molinia caerulea ssp. Arundinacea	2/3L	3	n/a	Plant in informal groups of 3-5
14	Salvia 'Caradonna'	2/3L	7	n/a	Plant in informal groups of 3-5
14	Symphotrichum 'Little Carlow'	2/3L	7	n/a	Informal groups of 3-5. Next to tall plants or by wall.
6	Vinca minor 'Alba'	2/3L	3	n/a	Plant in informal groups of 3-5
CLIMBERS					
1	Hydrangea anomala ssp. Petiolaris (Ha)	RB/ AP	as shown	125-150 cm	Caned/ on a frame.
2	Lonicera periclymenum 'Serotina' (Lp)	10L	as shown	125-150 cm	Caned/ on a frame
BULBS					
74	Allium sphaerocephalon	Top size	9	n/a	
74	Allium cultivars	Top size	9	n/a	
207	Galanthus nivalis	Top size	25	n/a	
42	Camassia leichtlinii	Top size	5	n/a	
82	Cyclamen coum	Tuber	10	n/a	
124	Narcissus 'Actaea'	Top size	15	n/a	
56	Tulipa sp.	Top size	10	n/a	

KEY

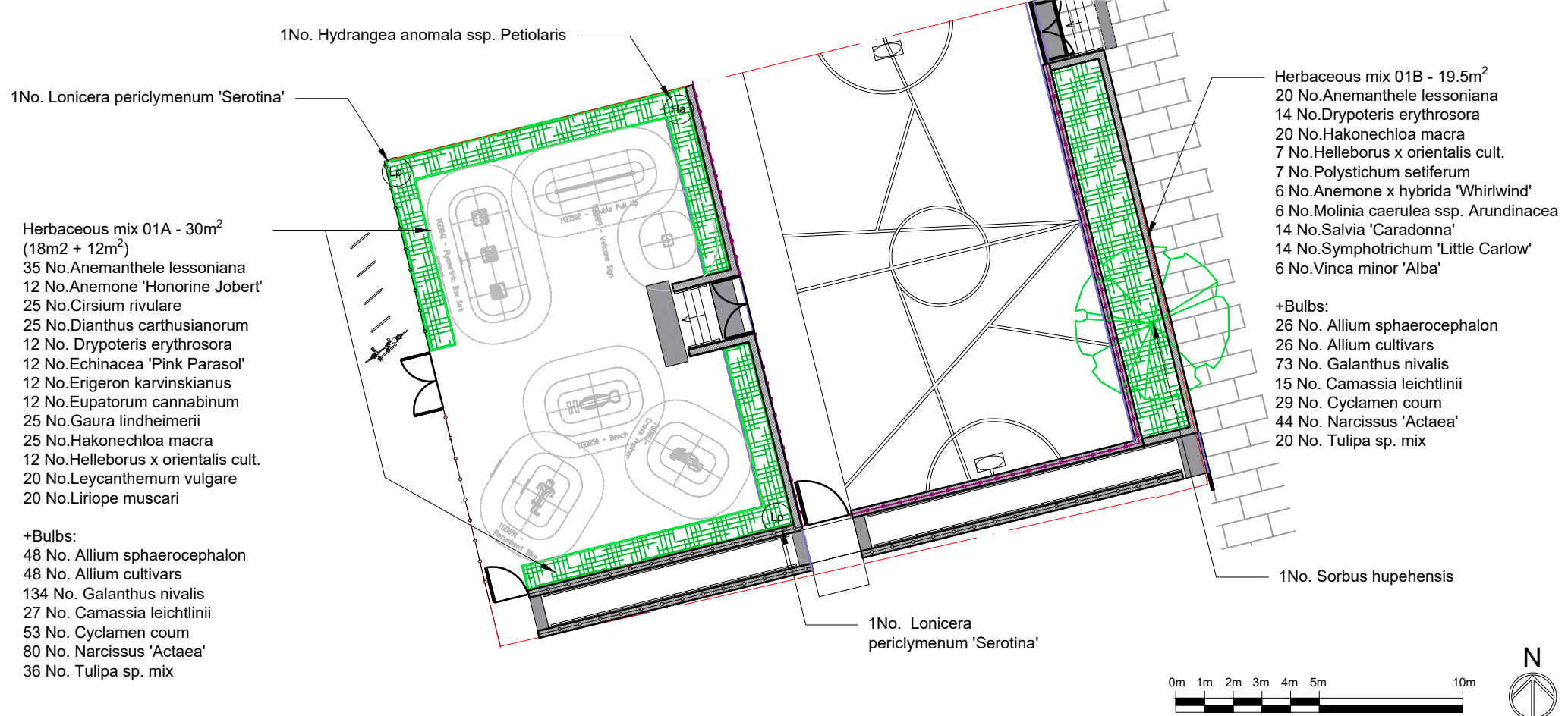
- Site boundary
- Existing tree retained. Retained trees to be protected according to the BS5837:2012 "Trees in relation to design, demolition and construction. Recommendations."
- New tree. Standard soft landscape tree pit, depth min. 800mm (300mm approved topsoil to BS 3882:2015 above 500mm existing decompacted subsoil or new approved free draining sandy subsoil to BS 8601:2013). Bottom of the tree pit de-compacted and free draining. Minimum tree pit dimensions 1000 x 1000mm.
- Specimen shrubs. Name abbreviations as per Planting Schedule. Exact location of specimen shrubs to be adjusted on site, to avoid placing taller shrubs in front of the ground floor windows.
- New mixed herbaceous perennial and groundcover planting.

NOTE: New hedges and planting beds are located in areas of former soft landscape. Ground preparation as per clearance plan. Top up with approved topsoil to BS 3882:2015 to finished levels as required. Hand dig in the tree RPA.

NOTE: All work in the Root Protection Area of the existing retained trees to be conducted in accordance with BS 5837:2012 "Trees in relation to design, demolition and construction. Recommendations". RPAs are to be measured and marked on site as a circle with a diameter 12 times the girth, as per BS 5837: 2012. Markers to be retained at all times, and not to be entered at any time except when necessary for construction.

- No materials to be stored in RPA;
- All work within RPAs to be completed by hand, or by machines positioned outside RPA;
- No chemicals, fuel, contaminated water or other toxic substance is to enter or be allowed to seep into any RPA;
- No damage to be caused to bark or visible parts of trees;
- No roots over 25mm diameter to be cut. Any cuts to be clean, saw cuts to minimize exposed area. No damage to be caused to root bark, including any roots outside RPA.

In the event of any unforeseen difficulty associated with tree roots the Contract Administrator (CA) must be contacted immediately. The CA will contact an arboriculturalist for advice as required. Trees to be monitored by London Borough of Camden for any future work.



Rev	Description	Drawn	Check	Appr	Date

Groundwork London
 12 Baron Street
 London N1 9LL
 Tel: 020 7239 1280
 Fax: 020 7278 1515
 www.groundwork.org.uk/London

Project: HS2 Improvements
 Client: LB Camden
 Drawing Title: PLANTING PLAN

Drawn: Check: Appr: Date: Scale at A3:
 RL LC LC 05/12/2019 1:200

Status: **PLANNING**

Drawing No: CA030_P_01AHM_011 Revision: -