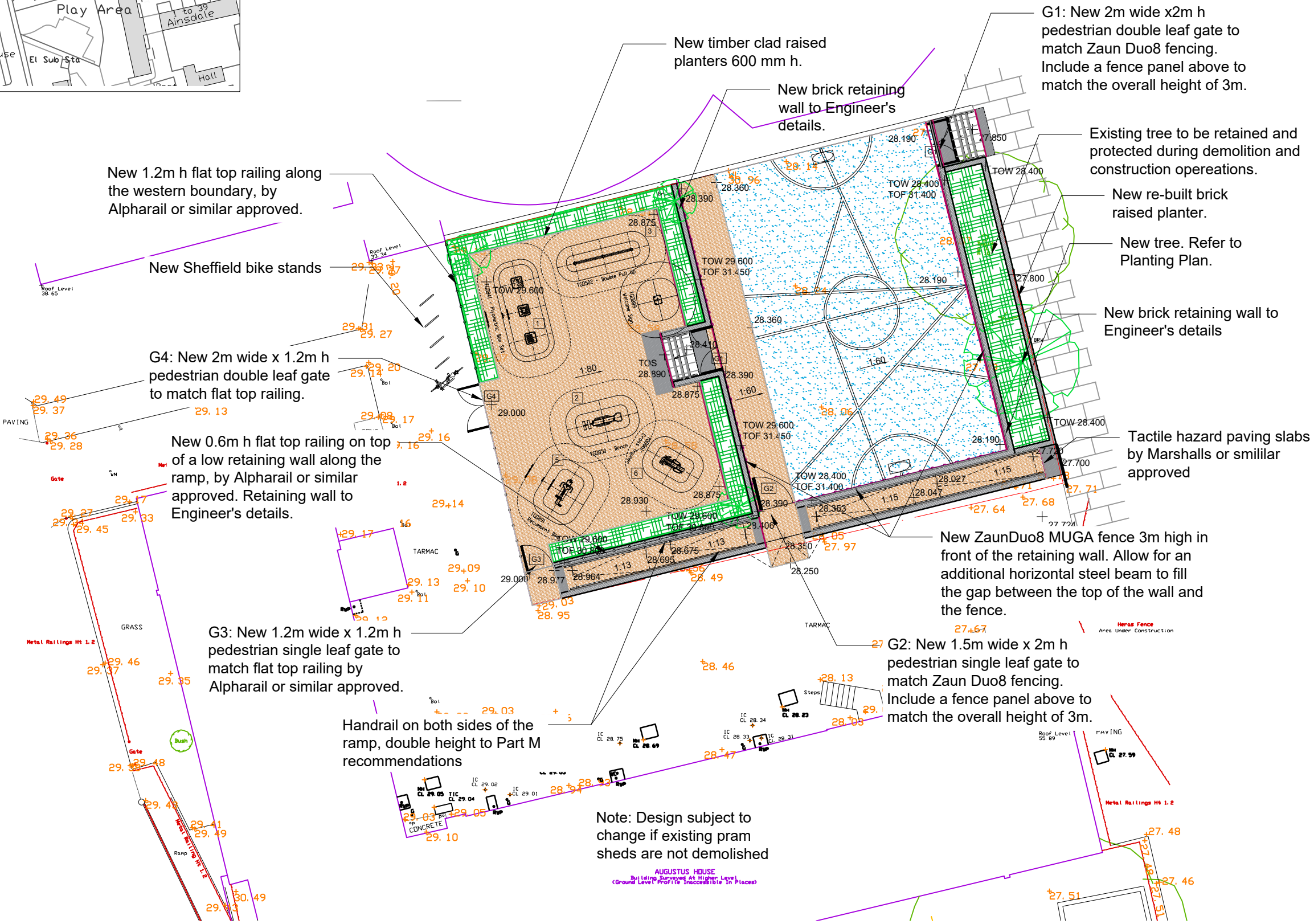




Location Plan



KEY

- Existing tree retained and protected according to the BS5837:2012.
- New tree in the raised planter. 300mm topsoil to BS 3882:2015 above 500mm new approved free draining sandy subsoil to BS 8601:2013.
- New shrub and perennial planting in raised planters. Topsoil to BS 3882:2015. Depth min. 600 mm.
- New surface to MUGA: new macadam ball court surfacing with non-slip heavy duty acrylic coating and acrylic line markings.
- Light buff coloured tarmac surface to the ramp by Ulticolour or similar approved.
- Steps: Marshalls Perfecta chamfered natural concrete treads and risers 400x400x50mm, cut to size, with inserted contrasting visibility strips.
- Handrail to steps and ramp: galvanised and powder coated steel to RAL9005 (jet black).
- Marshalls corduroy hazard warning paving slabs to steps and ramp. Colour: Dark Grey (TBC)
- New 1.2m h flat top metal railings by Alpharail or similar. Galvanised and powder coated to RAL9005 (jet black).
- New 3m h Zaun Duo8 Sports Fencing to east, south and west elevations to the ball courts. Galvanised and powder coated Dark Blue.
- New metal gates, width and height as shown on the drawing. Galvanised and powder coated to match fence panels.
- Brick retaining walls to structural engineer's details.
- New metal edging to resin bound gravel path. Flexible 50 mm h Flexible AluExcell by Kinley or similar approved.
- Slot drain by ACO or similar approved. Indicative location TBC; to drainage engineer's details
- Outdoor gym equipment by The Great Outdoor Gym Company

Existing levels +24.8 Proposed levels +4.27

Rev	Description	Drawn	Check	Appr	Date

Groundwork London
 12 Baron Street
 London N1 9LL
 Tel: 020 7239 1280
 Fax: 020 7278 1515
 www.groundwork.org.uk/London

Project: **HS2 Improvements**

Client: **LB Camden**

Drawing Title
GA PLAN

Drawn: MF Check: LC Appr: AP Date: 05/12/2019 Scale at A3: 1:200

Status: **PLANNING**

Drawing No: **CA030_P_01AHM_005** Revision: -

NOTE: All work in the Root Protection Area of the existing retained trees to be conducted in accordance with BS 5837:2012 "Trees in relation to design, demolition and construction. Recommendations". RPAs are to be measured and marked on site as a circle with a diameter 12 times the girth, as per BS 5837: 2012. Markers to be retained at all times, and not to be entered at any time except when necessary for construction.

- No materials to be stored in RPA;
- All work within RPAs to be completed by hand, or by machines positioned outside RPA;
- No chemicals, fuel, contaminated water or other toxic substance is to enter or be allowed to seep into any RPA;
- No damage to be caused to bark or visible parts of trees;
- No roots over 25mm diameter to be cut. Any cuts to be clean, saw cuts to minimize exposed area. No damage to be caused to root bark, including any roots outside RPA.

In the event of any unforeseen difficulty associated with tree roots the Contract Administrator (CA) must be contacted immediately. The CA will contact an arboriculturalist for advice as required. Trees to be monitored by London Borough of Camden for any future work.

