

STRIP OUT NOTES:

This drawing to be also read in conjunction with general arrangement drawings 3213/051-055finc

An R & D Survey will be carried out and any Asbestos Containing Material removed from site by the client before Strip out and Demolition is commenced

Cover and provide full protection internally to all single glazed timber vertical sliding sash & casement windows to front elevation including internal window boards panelling and architraves with 18mm ply

Remove all timber vertical sliding sash & casement windows to rear elevation

Generally remove all fixtures and fittings throughout including wardrobes, curtains & rails etc to all rooms

Generally strip out floor coverings to all rooms & stairs including parquet wood flooring, carpets & underlay & tiles and vinyl sheet flooring etc

Remove existing timber floor boards throughout to all rooms

Generally unless noted otherwise remove all internal doors throughout including frames & architraves

Generally strip out sw skirtings

Generally remove decorative coving's and plasterboard ceiling's throughout including any suspended ceiling systems

Generally disconnect & isolate all electrical services and remove all ceiling mounted light fittings and associated redundant switches, cables & conduits etc

Strip out all redundant electrical, telephone & others services including sockets outlets, light switches etc

Generally disconnect & isolate all hot & cold water services and strip out all sanitaryware, sinks, wall tiles, mirrors and associated pipework to bathroom & kitchen including base & wall units, shelving etc

Isolate heating & plumbing services and remove wall mounted electric radiators & heaters complete to all rooms incl associated redundant pipework etc

Form new door opening in existing stud wall as indicated to second floor

Generally remove wall paper coverings throughout to walls & ceilings in all rooms

Remove translucent pvc corrugated roofing to garage incl timber garage doors

PLANNING

THIS DRAWING IS NOT TO BE SCALED. ONLY DIMENSIONED DIMENSIONS ARE TO BE FOLLOWED (UNLESS THE DRAWING IS PART OF A PLANNING APPLICATION). CONTRACTORS ARE TO CHECK ALL DIMENSIONS BEFORE WORK COMMENCES AND REFER ANY APPARENT DISCREPANCY TO THE ARCHITECT.
THIS DRAWING IS THE SOLE PROPERTY OF MR PARTNERSHIP LIMITED AND MAY NOT BE COPIED OR REPRODUCED IN ANY MANNER WHATSOEVER WITHOUT THE OWNERS WRITTEN CONSENT.
© COPYRIGHT.

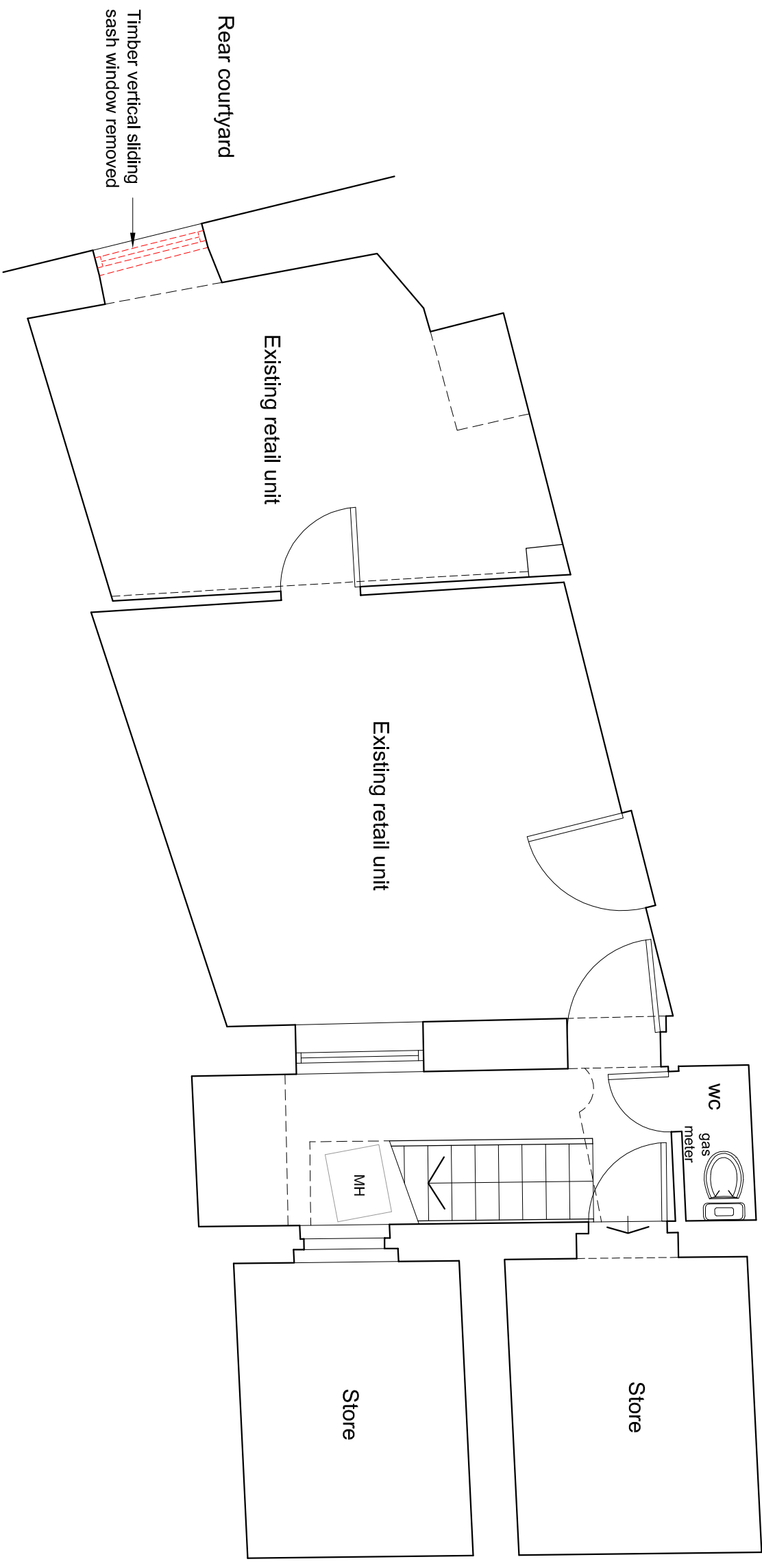
PROJECT 21 Warren Street
London

DRAWING Stripout and Demolition
Basement Floor Plan

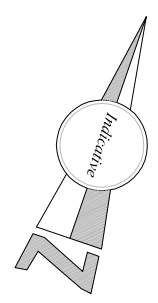


41-42 EQULEY STREET, LONDON W1W 7TS
T: +44 (0) 207 253 2526 F: +44 (0) 207 631 5445
E: mail@ch+mrp.com / info@mrpartners.co.uk
www.ch+mrp.com / www.mrpartners.co.uk

DATE:	AUG 19	SCALE:	1:25@A1 1:50@A3	DRAWN:	CAD
DWG No:	3213_100	REV. No:	/		
FILE:	3213_100 Basement Floor Plan.dwg				



Basement Plan



STRIP OUT NOTES:

This drawing to be also read in conjunction with general arrangement drawings 3213/051-055finc

An R & D Survey will be carried out and any Asbestos Containing Material removed from site by the client before Strip out and Demolition is commenced

Cover and provide full protection internally to all single glazed timber vertical sliding sash & casement windows to front elevation including internal window boards panelling and architraves with 18mm ply

Remove all timber vertical sliding sash & casement windows to rear elevation

Generally remove all fixtures and fittings throughout including wardrobes, curtains & rails etc to all rooms

Generally strip out floor coverings to all rooms & stairs including parquet wood flooring, carpets & underlay & tiles and vinyl sheet flooring etc

Remove existing timber floor boards throughout to all rooms

Generally unless noted otherwise remove all internal doors throughout including frames & architraves

Generally strip out sw skirtings

Generally remove decorative coverings and plasterboard ceilings throughout including any suspended ceiling systems

Generally disconnect & isolate all electrical services and remove all ceiling mounted light fittings and associated redundant switches, cables & conduits etc

Strip out all redundant electrical, telephone & others services including sockets outlets, light switches etc

Generally disconnect & isolate all hot & cold water services and strip out all sanitaryware, sinks, wall tiles, mirrors and associated pipework to bathroom & kitchen including base & wall units, shelving etc

Isolate heating & plumbing services and remove wall mounted electric radiators & heaters complete to all rooms incl associated redundant pipework etc

Form new door opening in existing stud wall as indicated to second floor

Generally remove wall paper coverings throughout to walls & ceilings in all rooms

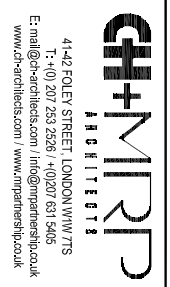
Remove translucent pvc corrugated roofing to garage incl timber garage doors

PLANNING

BT
THIS DRAWING IS NOT TO BE SCALED. ONLY FIGURED DIMENSIONS ARE TO BE FOLLOWED (UNLESS THE DRAWING IS PART OF A PLANNING APPLICATION). CONTRACTORS ARE TO CHECK ALL DIMENSIONS BEFORE WORK COMMENCES AND REFER ANY APPARENT DISCREPANCY TO THE ARCHITECT.
THIS DRAWING IS THE SOLE PROPERTY OF MR PARTNERSHIP LIMITED, AND MAY NOT BE COPIED OR REPRODUCED IN ANY MANNER WHATSOEVER WITHOUT THE OWNERS WRITTEN CONSENT.
© COPYRIGHT.

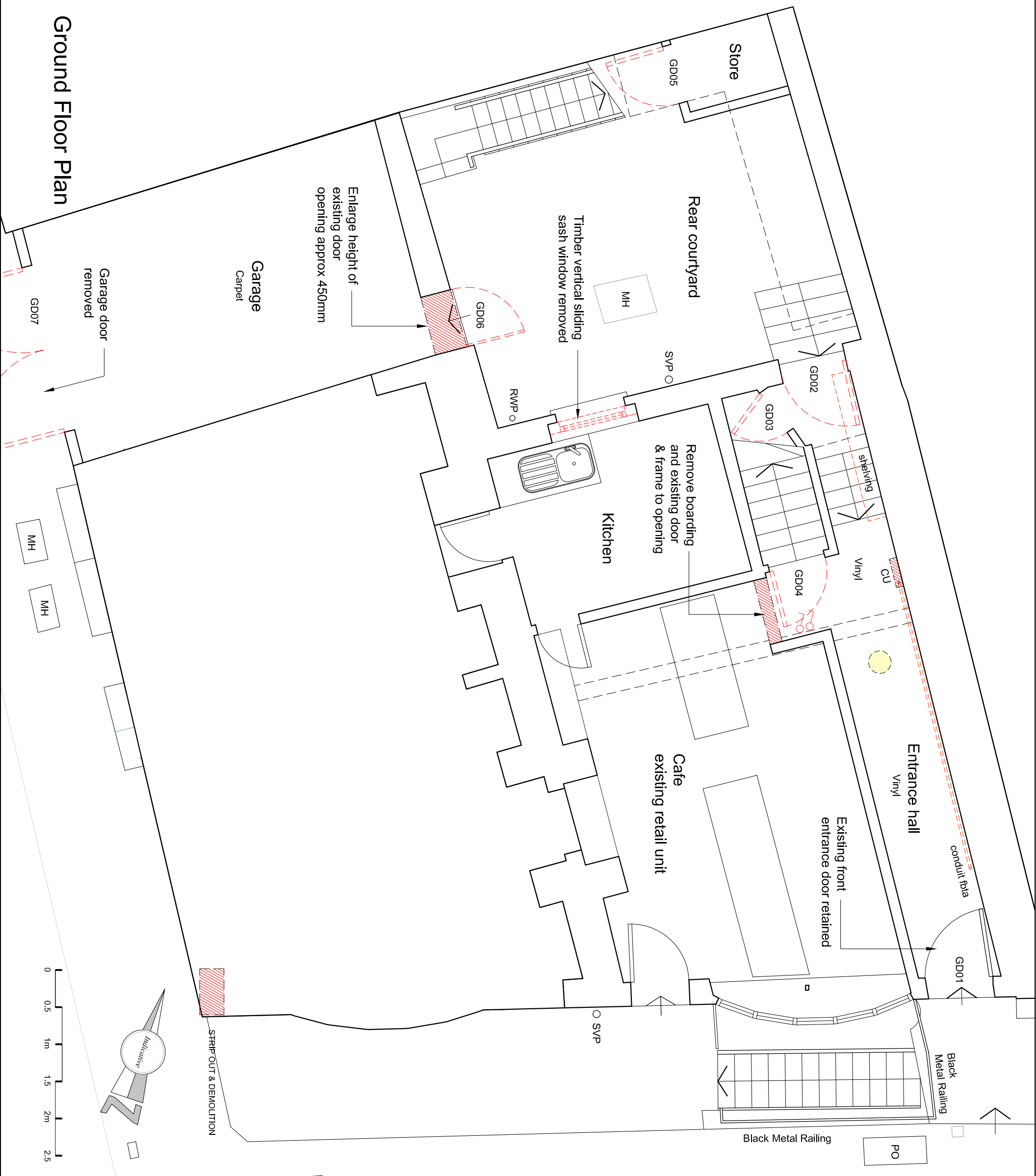
PROJECT 21 Warren Street
London

DRAWING Stripout and Demolition
Ground Floor Plan

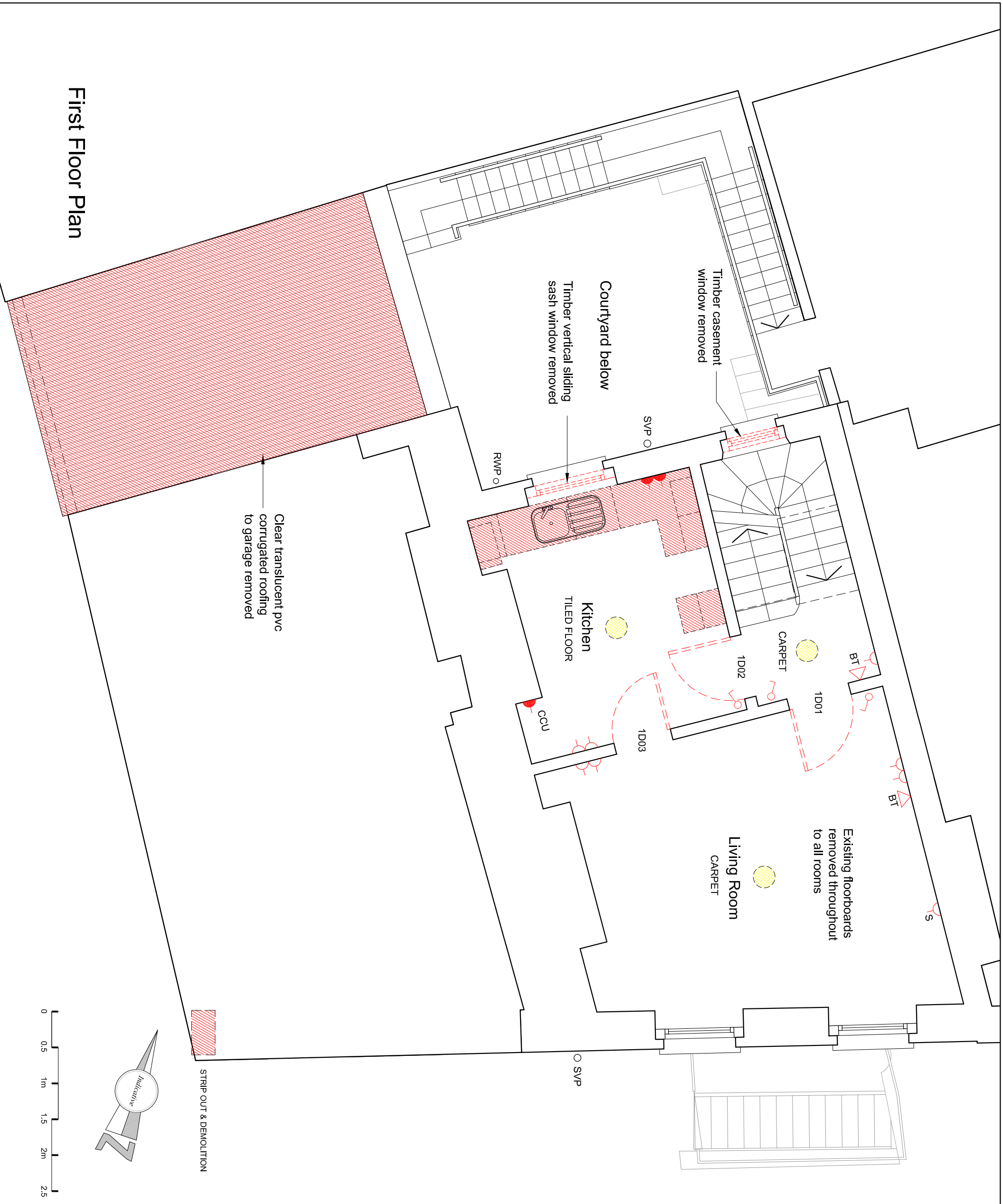


41-42 EOLEY STREET, LONDON W1W 7TS
T: +44 (0) 207 253 2526 | F: +44 (0) 207 631 5449
E: mail@ch+mipr.com | info@partnership.co.uk
www.ch+mipr.com | www.partnership.co.uk

DATE:	AUG 19	SCALE:	1:25@A1 1:50@A3	DRAWN:	CAD
DWG No:	3213_101	REV. No:	/		
FILE:	3213_101 Ground Floor Plan.dwg				



Ground Floor Plan



STRIP OUT NOTES:

- This drawing to be also read in conjunction with general arrangement drawings 3213/051-055finc
- An R & D Survey will be carried out and any Asbestos Containing Material removed from site by the client before Strip out and Demolition is commenced
- Cover and provide full protection internally to all single glazed timber vertical sliding sash & casement windows to front elevation including internal window boards panelling and architraves with 18mm ply
- Remove all timber vertical sliding sash & casement windows to rear elevation
- Generally remove all fixtures and fittings throughout including wardrobes, curtains & rails etc to all rooms
- Generally strip out floor coverings to all rooms & stairs including parquet wood flooring, carpets & underlay & tiles and vinyl sheet flooring etc
- Remove existing timber floor boards throughout to all rooms
- Generally unless noted otherwise remove all internal doors throughout including frames & architraves
- Generally strip out sw skirtings
- Generally remove decorative coverings and plasterboard ceilings throughout including any suspended ceiling systems
- Generally disconnect & isolate all electrical services and remove all ceiling mounted light fittings and associated redundant switches, cables & conduits etc
- Strip out all redundant electrical, telephone & others services including sockets outlets, light switches etc
- Generally disconnect & isolate all hot & cold water services and strip out all sanitaryware, sinks, wall tiles, mirror's and associated pipework to bathroom & kitchen including base & wall units, shelving etc
- Isolate heating & plumbing services and remove wall mounted electric radiators & heaters complete to all rooms incl associated redundant pipework etc
- Form new door opening in existing stud wall as indicated to second floor
- Generally remove wall paper coverings throughout to walls & ceilings in all rooms
- Remove translucent pvc corrugated roofing to garage incl timber garage doors

PLANNING

THIS DRAWING IS NOT TO BE SCALED. ONLY FIGURED DIMENSIONS ARE TO BE FOLLOWED (UNLESS THE DRAWING IS PART OF A PLANNING APPLICATION). CONTRACTORS ARE TO CHECK ALL DIMENSIONS BEFORE WORK COMMENCES, AND REFER ANY APPARENT DISCREPANCY TO THE ARCHITECT.
 THIS DRAWING IS THE SOLE PROPERTY OF MR PARTNERSHIP LIMITED, AND MAY NOT BE COPIED OR REPRODUCED IN ANY MANNER WHATSOEVER WITHOUT THE OWNERS WRITTEN CONSENT.
 © COPYRIGHT.

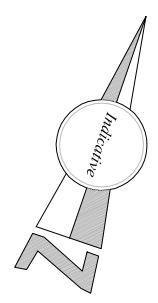
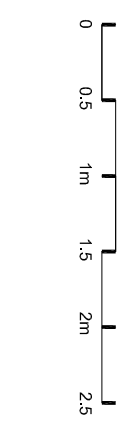
PROJECT 21 Warren Street
 London

DRAWING Stripout and Demolition
 First Floor Plan

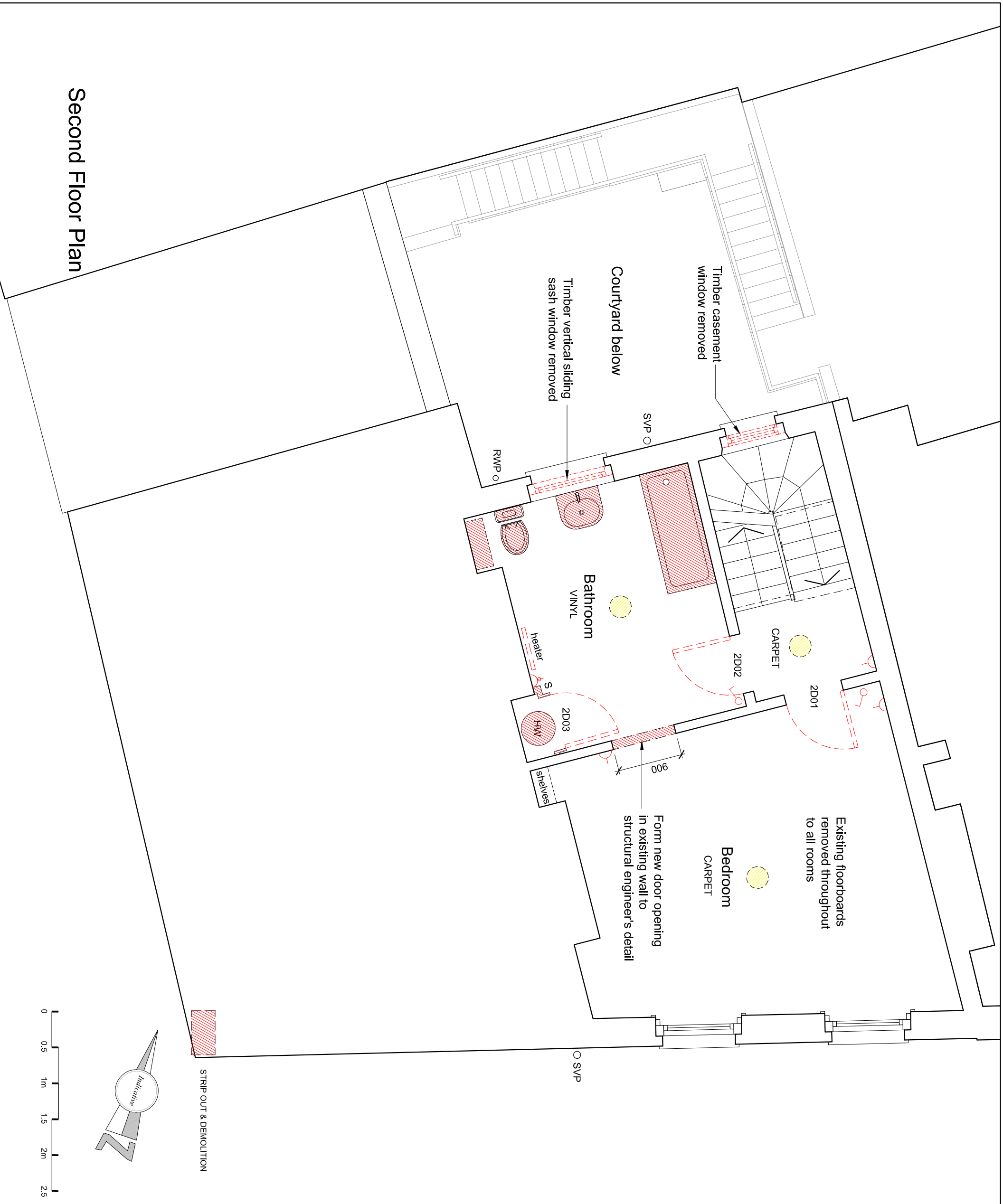


41-42 EOLEY STREET, LONDON W1W 7TS
 T: +40 207 253 2526 | F: +40207 531 5416
 E: mail@ch-mirp.com | info@partnership.co.uk
 www.ch-mirp.com | www.partnership.co.uk

First Floor Plan



DATE:	AUG 19	SCALE:	1:25@A1 1:50@A3	DRAWN:	CAD
DWG No:	3213_102	REV. No:	/		
FILE: 3213_102 First Floor Planning					



STRIP OUT NOTES:

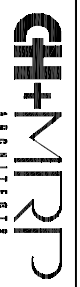
- This drawing to be also read in conjunction with general arrangement drawings 3213/051-055finc
- An R & D Survey will be carried out and any Asbestos Containing Material removed from site by the client before Strip out and Demolition is commenced
- Cover and provide full protection internally to all single glazed timber vertical sliding sash & casement windows to front elevation including internal window boards panelling and architraves with 18mm ply
- Remove all timber vertical sliding sash & casement windows to rear elevation
- Generally remove all fixtures and fittings throughout including wardrobes, curtains & rails etc to all rooms
- Generally strip out floor coverings to all rooms & stairs including parquet wood flooring, carpets & underlay & tiles and vinyl sheet flooring etc
- Remove existing timber floor boards throughout to all rooms
- Generally unless noted otherwise remove all internal doors throughout including frames & architraves
- Generally strip out sw skirtings
- Generally remove decorative coverings and plasterboard ceilings throughout including any suspended ceiling systems
- Generally disconnect & isolate all electrical services and remove all ceiling mounted light fittings and associated redundant switches, cables & conduits etc
- Strip out all redundant electrical, telephone & others services including sockets outlets, light switches etc
- Generally disconnect & isolate all hot & cold water services and strip out all sanitaryware, sinks, wall tiles, mirror's and associated pipework to bathroom & kitchen including base & wall units, shelving etc
- Isolate heating & plumbing services and remove wall mounted electric radiators & heaters complete to all rooms incl associated redundant pipework etc
- Form new door opening in existing stud wall as indicated to second floor
- Generally remove wall paper coverings throughout to walls & ceilings in all rooms
- Remove translucent pvc corrugated roofing to garage incl timber garage doors

PLANNING

THIS DRAWING IS NOT TO BE SCALED. ONLY FIGURED DIMENSIONS ARE TO BE FOLLOWED (UNLESS THE DRAWING IS PART OF A PLANNING APPLICATION). CONTRACTORS ARE TO CHECK ALL DIMENSIONS BEFORE WORK COMMENCES AND REFER ANY APPARENT DISCREPANCY TO THE ARCHITECT.
 THIS DRAWING IS THE SOLE PROPERTY OF MR PARTNERSHIP LIMITED AND MAY NOT BE COPIED OR REPRODUCED IN ANY MANNER WHATSOEVER WITHOUT THE OWNERS WRITTEN CONSENT.
 © COPYRIGHT.

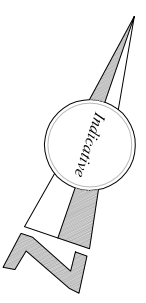
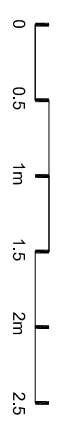
PROJECT 21 Warren Street
 London

DRAWING Stripout and Demolition
 Second Floor Plan



41-42 EQULEY STREET, LONDON, W1W 7TS
 T: +44 (0) 207 253 2526 F: +44 (0) 207 631 5445
 E: mail@ch+mrp.com / info@mrpartnership.co.uk
 www.ch+mrp.com / www.mrpartnership.co.uk

Second Floor Plan



DATE:	AUG 19	SCALE:	1:25@A1 1:50@A3	DRAWN:	CAD
DWG No:	3213_103	REV. No:	/		
FILE: 3213_103 Second Floor Planning					

STRIP OUT NOTES:

This drawing to be also read in conjunction with general arrangement drawings 3213/051-4/055finc

An R & D Survey will be carried out and any Asbestos Containing Material removed from site by the client before Strip out and Demolition is commenced

Cover and provide full protection internally to all single glazed timber vertical sliding sash & casement windows to front elevation including internal window boards panelling and architraves with 18mm ply

Remove all timber vertical sliding sash & casement windows to rear elevation

Generally remove all fixtures and fittings throughout including wardrobes, curtains & rails etc to all rooms

Generally strip out floor coverings to all rooms & stairs including parquet wood flooring, carpets & underlay & tiles and vinyl sheet flooring etc

Remove existing timber floor boards throughout to all rooms

Generally unless noted otherwise remove all internal doors throughout including frames & architraves

Generally strip out sw skirtings

Generally remove decorative coverings and plasterboard ceilings throughout including any suspended ceiling systems

Generally disconnect & isolate all electrical services and remove all ceiling mounted light fittings and associated redundant switches, cables & conduits etc

Strip out all redundant electrical, telephone & others services including sockets outlets, light switches etc

Generally disconnect & isolate all hot & cold water services and strip out all sanitaryware, sinks, wall tiles, mirror's and associated pipework to bathroom & kitchen including base & wall units, shelving etc

Isolate heating & plumbing services and remove wall mounted electric radiators & heaters complete to all rooms incl associated redundant pipework, etc

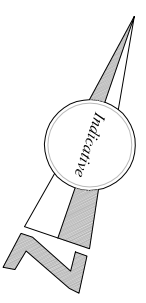
Form new door opening in existing stud wall as indicated to second floor

Generally remove wall paper coverings throughout to walls & ceilings in all rooms

Remove translucent pvc corrugated roofing to garage incl timber garage doors

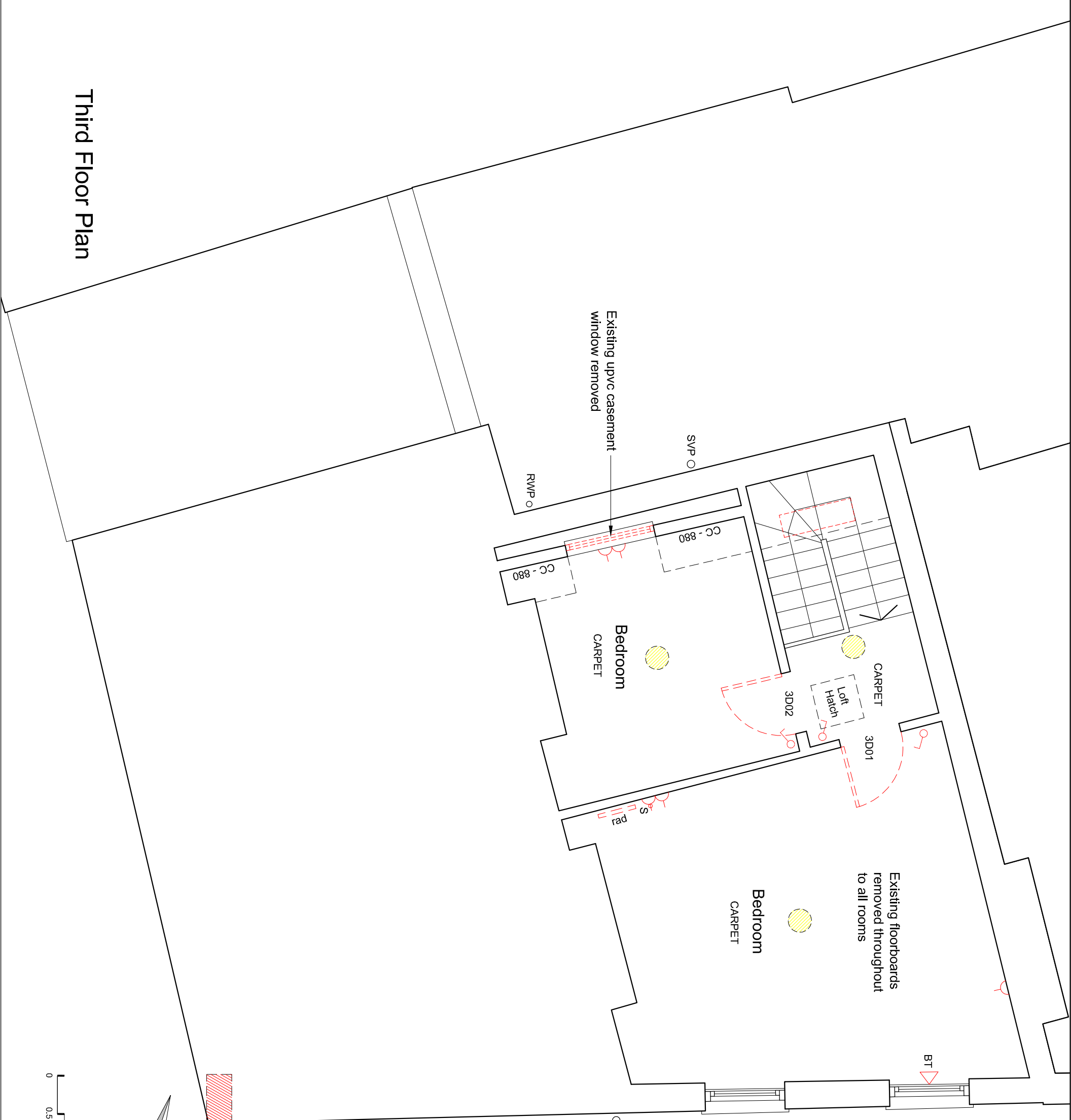
PLANNING

THIS DRAWING IS NOT TO BE SCALED. ONLY FIGURED DIMENSIONS ARE TO BE FOLLOWED (UNLESS THE DRAWING IS PART OF A PLANNING APPLICATION). CONTRACTORS ARE TO CHECK ALL DIMENSIONS BEFORE WORK COMMENCES, AND REFER ANY APPARENT DISCREPANCY TO THE ARCHITECT.	
THIS DRAWING IS THE SOLE PROPERTY OF MR PARTNERSHIP LIMITED, AND MAY NOT BE COPIED OR REPRODUCED IN ANY MANNER WHATSOEVER WITHOUT THE OWNERS WRITTEN CONSENT.	
PROJECT	21 Warren Street London
DRAWING	Stripout and Demolition Third Floor Plan



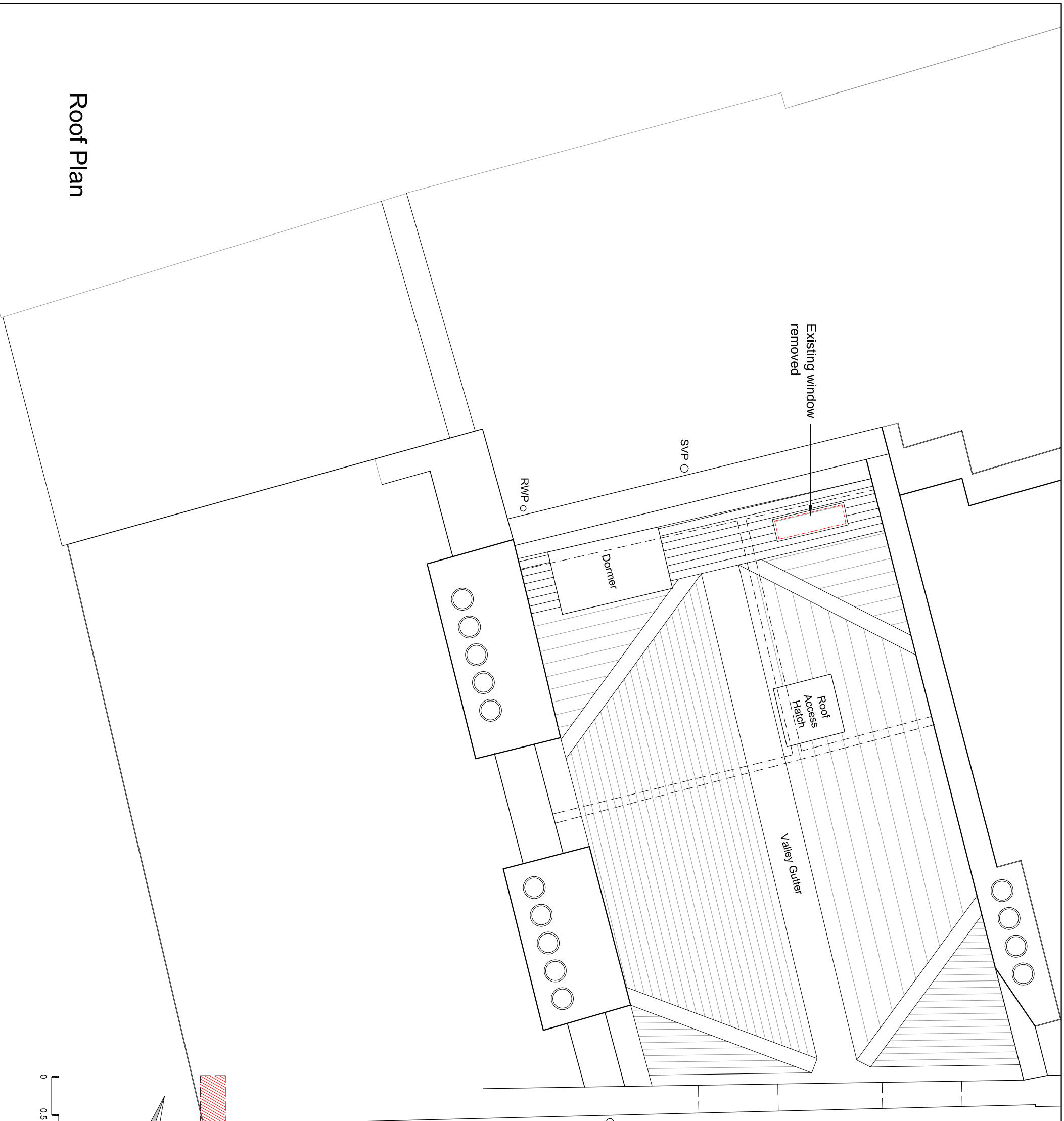
STRIP OUT & DEMOLITION

Third Floor Plan



41-42 EQULEY STREET, LONDON, W1W 7TS
 T: +40 207 233 2526 | +40207 531 5426
 E: mail@ch-mirp.com | info@partnersthe.co.uk
 www.ch-mirp.com | www.partnersthe.co.uk

DATE:	AUG 19	SCALE:	1:25@A1 1:50@A3	DRAWN:	CAD
DWG No:	3213_104	REV. No:	/		
FILE: 3213_104 Third Floor Plan.dwg					



STRIP OUT NOTES:

- This drawing to be also read in conjunction with general arrangement drawings 3213/051-055finc
- An R & D Survey will be carried out and any Asbestos Containing Material removed from site by the client before Strip out and Demolition is commenced
- Cover and provide full protection internally to all single glazed timber vertical sliding sash & casement windows to front elevation including internal window boards panelling and architraves with 18mm ply
- Remove all timber vertical sliding sash & casement windows to rear elevation
- Generally remove all fixtures and fittings throughout including wardrobes, curtains & rails etc to all rooms
- Generally strip out floor coverings to all rooms & stairs including parquet wood flooring, carpets & underlay & tiles and vinyl sheet flooring etc
- Remove existing timber floor boards throughout to all rooms
- Generally unless noted otherwise remove all internal doors throughout including frames & architraves
- Generally strip out sw skirtings
- Generally remove decorative coving's and plasterboard ceiling's throughout including any suspended ceiling systems
- Generally disconnect & isolate all electrical services and remove all ceiling mounted light fittings and associated redundant switches, cables & conduits etc
- Strip out all redundant electrical, telephone & others services including sockets outlets, light switches etc
- Generally disconnect & isolate all hot & cold water services and strip out all sanitaryware, sinks, wall tiles, mirrors and associated pipework to bathroom & kitchen including base & wall units, shelving etc
- Isolate heating & plumbing services and remove wall mounted electric radiators & heaters complete to all rooms incl associated redundant pipework, etc
- Form new door opening in existing stud wall as indicated to second floor
- Generally remove wall paper coverings throughout to walls & ceilings in all rooms
- Remove translucent pvc corrugated roofing to garage incl timber garage doors

PLANNING

THIS DRAWING IS NOT TO BE SCALED. ONLY FIGURED DIMENSIONS ARE TO BE FOLLOWED (UNLESS THE DRAWING IS PART OF A PLANNING APPLICATION). CONTRACTORS ARE TO CHECK ALL DIMENSIONS BEFORE WORK COMMENCES, AND REFER ANY APPARENT DISCREPANCY TO THE ARCHITECT.
 THIS DRAWING IS THE SOLE PROPERTY OF MR PARTNERSHIP LIMITED, AND MAY NOT BE COPIED OR REPRODUCED IN ANY MANNER WHATSOEVER WITHOUT THE OWNERS WRITTEN CONSENT.
 © COPYRIGHT.

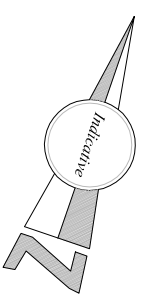
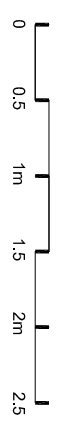
PROJECT 21 Warren Street
 London

DRAWING Stripout and Demolition
 Roof Plan



41-42 EQULEY STREET, LONDON, W1W 7TS
 T: +44 (0)20 233 2526 | F: +44(0)20 751 5445
 E: mail@ch+mirp.com | info@mrpartnership.co.uk
 www.ch+mirp.com | www.mrpartnership.co.uk

Roof Plan



DATE:	AUG 19	SCALE:	1:25@A1 1:50@A3	DRAWN:	CAD
DWG No:	3213_105	REV. No:	/		
FILE: 3213_105 Roof Plan.dwg					