

DESIGN AND ACCESS STATEMENT

Existing and Proposed Design

The entrance into 14 Greville Street is currently set back from the street and is up a flight of 10 steps. The entrance is small, dark and not accessible for all.

The Proposal is to alter the internal layout to the entrance area of 14 Greville street (The internal alterations do not require planning permission) so that the entrance area is level to the pavement, creating an inviting and accessible entrance. The final internal layout is yet to be confirmed but will involve lift access to all floors from the entrance area.

The Proposed Entrance door is to be set inline with the current glazed facade and will be constructed with a metal frame, glazed panel to the door and glazed fixed panel over the door.

Accessibility

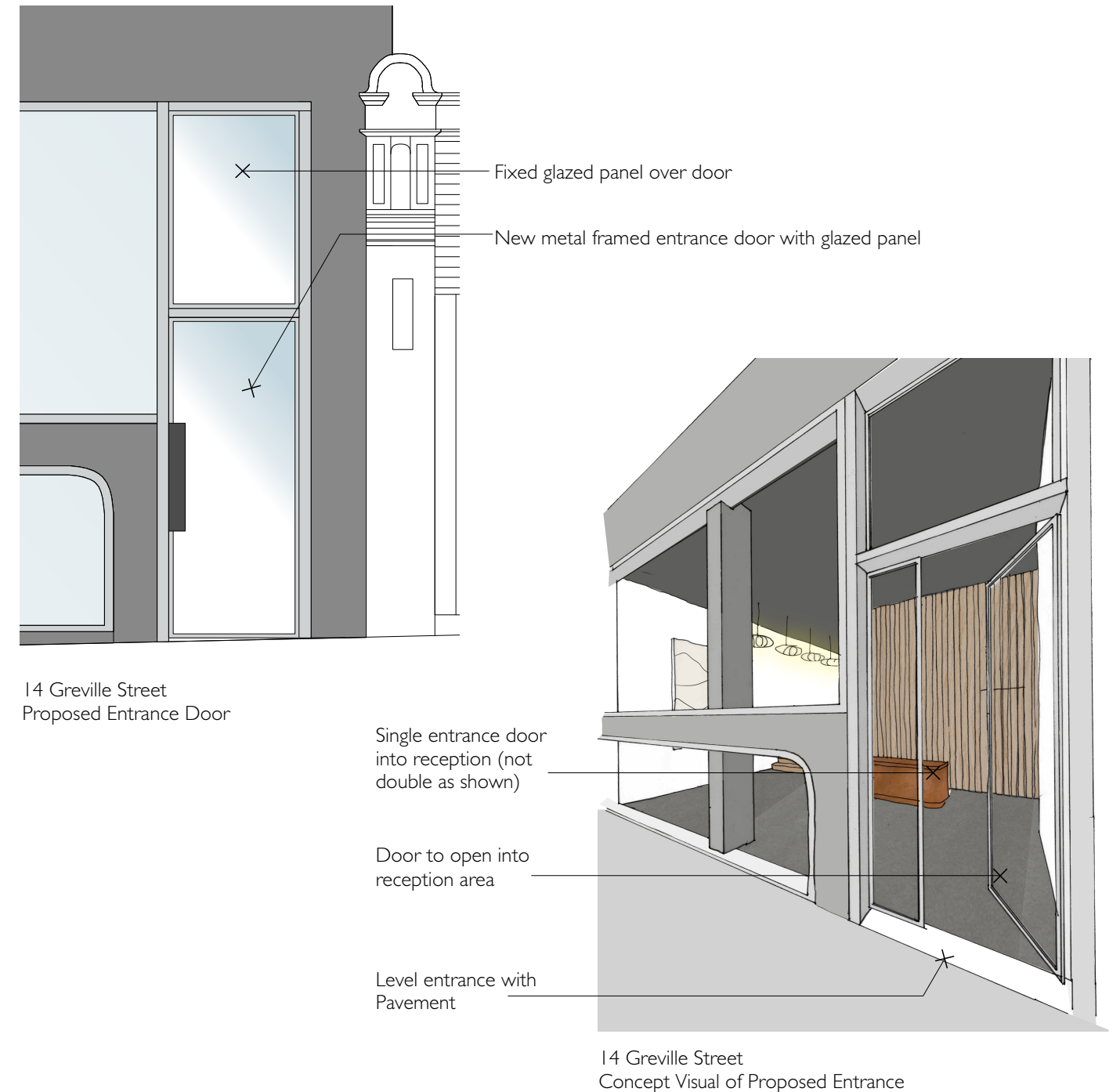
The new door will be on a push button for wheelchair users. The threshold will be level.

Materials

The material of the door frame is proposed to match the finish and colour of the metal frame to the existing ground floor windows (these are powdercoated metal).

Local Examples

Along Greville street there are currently several types of entrances many of which consist of doors which open off the pavement into a reception area. 24 Greville Street is an example of this.



24 Greville Street - Entrance into office directly off pavement