

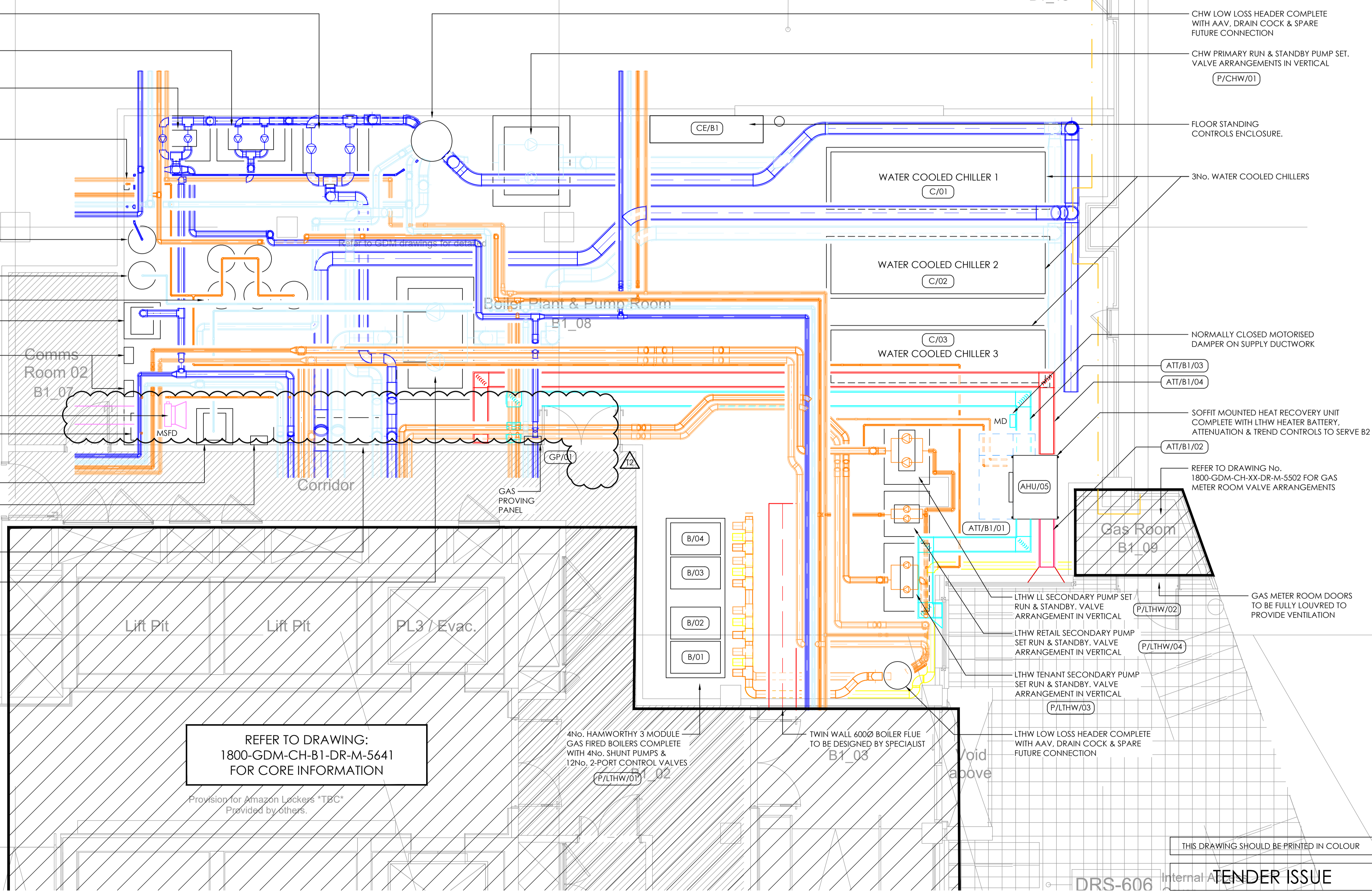
C

D

E

REFER TO DRAWINGS:
1800-GDM-CH-B1-DR-M-5602 & 5603
FOR FLOOR INFORMATION

- (P/CHW/04) CHW TENANT SECONDARY PUMP SET RUN & STANDBY. VALVE ARRANGEMENT IN VERTICAL
- (P/CHW/03) CHW LL SECONDARY PUMP SET RUN & STANDBY. VALVE ARRANGEMENT IN VERTICAL
- (P/CHW/05) CHW RETAIL SECONDARY RUN & STANDBY PUMPS. VALVE ARRANGEMENT IN VERTICAL
- (PU/01) 3No. PRESSURISATION UNITS FOR LTHW & CHW & CONDENSE SYSTEMS WALL MOUNTED 1500mm AFFL CENTRE LINE
- (PU/02)
- (PU/03)
- (EV/06) 1No. CHW EXPANSION VESSEL
- (EV/07) 1No. EXPANSION VESSEL FOR CONDENSER WATER
- (EV/01) 5No. LTHW EXPANSION VESSELS
- (EV/02) CHW SIDESTREAM FILTRATION (SSF/02)
- (EV/03)
- (EV/04)
- (EV/05) 2No. SIDESTREAM FILTRATION CONTROL PANELS WALL MOUNTED 1500mm AFFL CENTRE LINE
- (SSF/01) FIRE RATED SMOKE EXTRACT DUCT AT H/L LTHW SIDESTREAM FILTRATION
- (SSF/03) CONDENSE SIDESTREAM FILTRATION
- (SSF/02) 1No. SIDESTREAM FILTRATION CONTROL PANEL WALL MOUNTED 1500mm AFFL CENTRE LINE
- (CE/SE) SMOKE EXTRACT CONTROL PANEL
- (P/CHW/02) CONDENSE CIRCUIT RUN & STANDBY PUMP SET. VALVE ARRANGEMENTS IN VERTICAL



REFER TO DRAWING:
1800-GDM-CH-B1-DR-M-5641
FOR CORE INFORMATION

Provision for Amazon Lockers *TBC*
Provided by others.

4No. HAMWORTHY 3 MODULE
GAS FIRED BOILERS COMPLETE
WITH 4No. SHUNT PUMPS &
12No. 2-PORT CONTROL VALVES
(P/LTHW/01)

TWIN WALL 600Ø BOILER FLUE
TO BE DESIGNED BY SPECIALIST
B1_03

EMERGENCY SHUT OFF VALVE ON
INCOMING GAS SUPPLY

Internal Access
Cover

B1_18

INCOMING GAS PIPEWORK AT H/L WITHIN
PIPE-IN-PIPE SYSTEM VENTILATED INTO
GAS METER ENCLOSURE.

CHW LOW LOSS HEADER COMPLETE
WITH AAV, DRAIN COCK & SPARE
FUTURE CONNECTION

CHW PRIMARY RUN & STANDBY PUMP SET.
VALVE ARRANGEMENTS IN VERTICAL
(P/CHW/01)

FLOOR STANDING
CONTROLS ENCLOSURE.

3No. WATER COOLED CHILLERS

WATER COOLED CHILLER 1
(C/01)

WATER COOLED CHILLER 2
(C/02)

WATER COOLED CHILLER 3
(C/03)

NORMALLY CLOSED MOTORISED
DAMPER ON SUPPLY DUCTWORK

(ATT/B1/03)

(ATT/B1/04)

SOFFIT MOUNTED HEAT RECOVERY UNIT
COMPLETE WITH LTHW HEATER BATTERY,
ATTENUATION & TREND CONTROLS TO SERVE B2

(ATT/B1/02)

REFER TO DRAWING No.
1800-GDM-CH-XX-DR-M-5502 FOR GAS
METER ROOM VALVE ARRANGEMENTS

Gas Room
B1_08

GAS METER ROOM DOORS
TO BE FULLY LOUVRED TO
PROVIDE VENTILATION

LTHW LL SECONDARY PUMP SET
RUN & STANDBY. VALVE
ARRANGEMENT IN VERTICAL
(P/LTHW/02)

LTHW RETAIL SECONDARY PUMP
SET RUN & STANDBY. VALVE
ARRANGEMENT IN VERTICAL
(P/LTHW/04)

LTHW TENANT SECONDARY PUMP
SET RUN & STANDBY. VALVE
ARRANGEMENT IN VERTICAL
(P/LTHW/03)

LTHW LOW LOSS HEADER COMPLETE
WITH AAV, DRAIN COCK & SPARE
FUTURE CONNECTION

void
above

THIS DRAWING SHOULD BE PRINTED IN COLOUR

DRS-606

TENDER ISSUE

- DO NOT SCALE FROM THIS DRAWING. ALL DIMENSIONS MUST BE CHECKED / VERIFIED ON SITE.
- THIS DRAWING IS TO BE READ IN CONJUNCTION WITH THE LATEST ARCHITECTURAL, STRUCTURAL & BUILDING SERVICES DRAWINGS & SPECIFICATIONS.
- ALL DIMENSIONS ARE IN MILLIMETRES UNLESS NOTED OTHERWISE. ALL LEVELS ARE IN METRES UNLESS NOTED OTHERWISE.
- ANY DISCREPANCIES NOTED ON SITE ARE TO BE REPORTED TO THE ENGINEER IMMEDIATELY.
- THIS DRAWING MUST NOT BE USED FOR INSTALLATION PURPOSES. THE CONTRACTOR SHALL PRODUCE INSTALLATION DRAWINGS.

PROJECT NOTES:

1. THIS DRAWING IS TO BE READ IN CONJUNCTION WITH ALL GDM SPECIFICATIONS & SCHEDULES.
2. THIS DRAWING IS TO BE READ IN CONJUNCTION WITH GDM DRAWING 1800-GDM-CH-XX-DR-M-6301.
3. ANY DISCREPANCIES SHOULD BE BROUGHT TO THE ATTENTION OF GDM. IF IN DOUBT, ASK.

T2	07.11.19	TENDER ISSUE	PJD	DP
T1	13.09.19	TENDER ISSUE	PJD	DP
Rev:	Date:	Description:	Drn:	Chk:

© THIS DRAWING IS THE PROPERTY OF GDM PARTNERSHIP LTD. & IS ISSUED IN CONFIDENCE. IT MUST NOT BE COPIED OR DISCLOSED TO THIRD PARTIES WITHOUT WRITTEN PERMISSION OF THE COMPANY

GDM PARTNERSHIP
SUSTAINABLE ENGINEERING

51 Johns House, 37-41
Spital Street, Darford,
Kent, DA1 2DR

Tel: 01322 225242
e: gdm@gdmp.co.uk
www.gdmpartnership.com

Client:
**ROYAL LONDON MUTUAL
INSURANCE SOCIETY**

Architect:
APT

Project:
**CASTLEWOOD HOUSE
AND MEDIUS HOUSE**

Title:
**MECHANICAL SERVICES
BASEMENT B1
CHILLER AND BOILER PLANTROOM
LAYOUT**

Scale:	Date:	Drawn:	Checked:
1:50@A1	AUG 2018	PJD	DP

Drawing Number:	Rev:
1800-GDM-CH-B1-DR-M-5630	T2