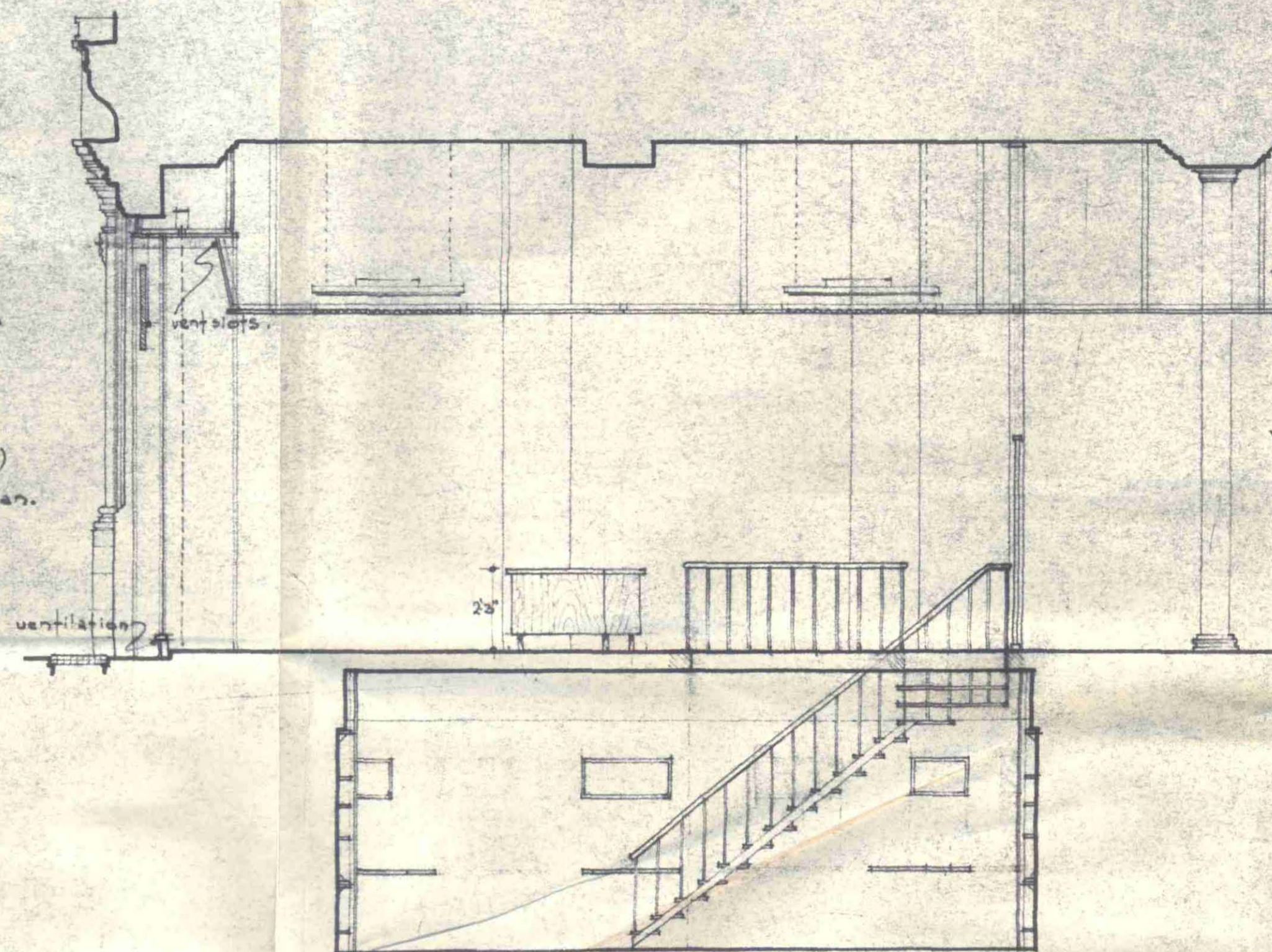


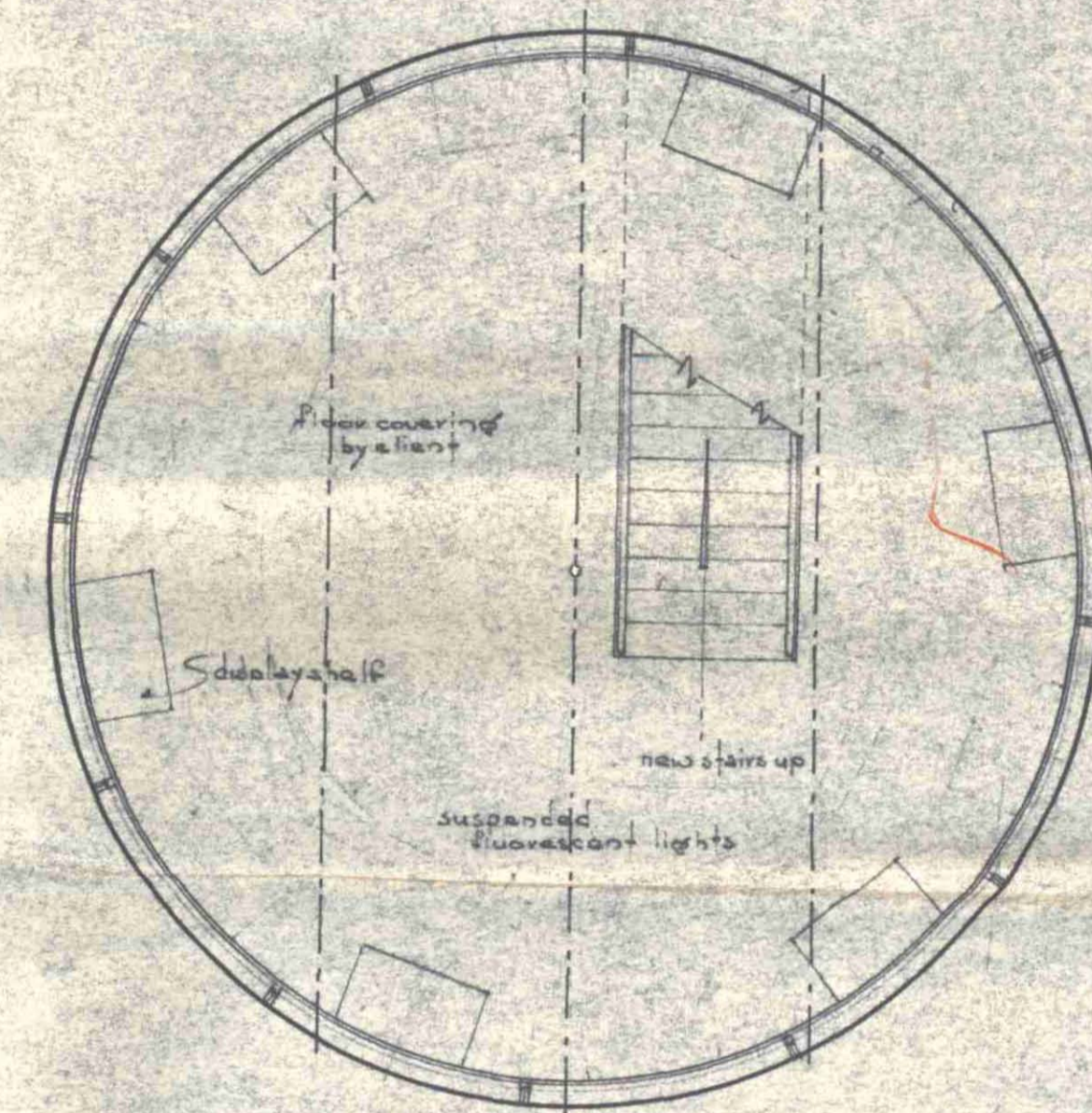


ELEVATION OF SHOP FRONT

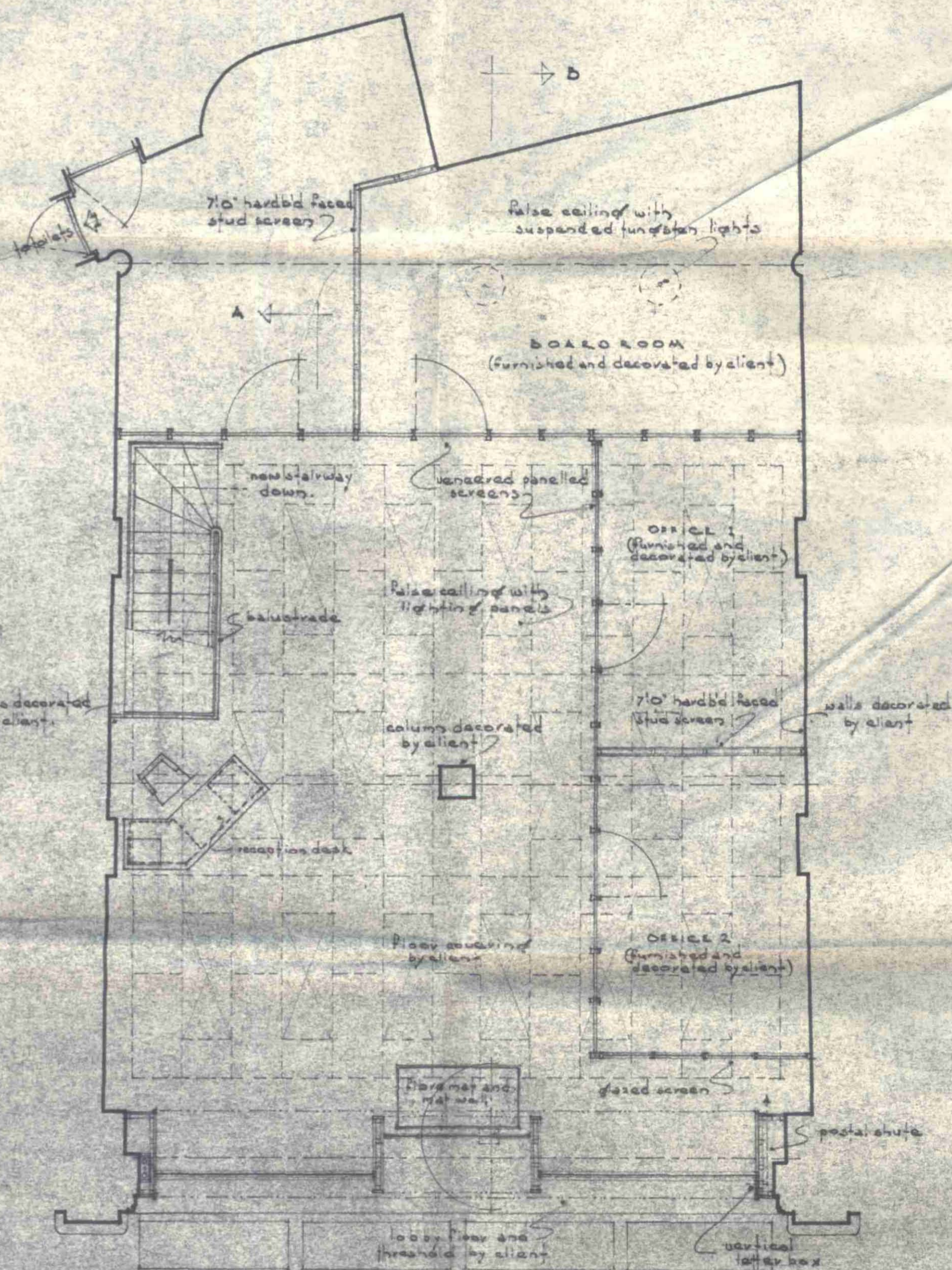
Stone surround to remain as existing.  
 Glamorock faced inset surround.  
 Glamorock faced returns to surround.  
 Lead coated sheet steel box type letters with inset reflective faces (illuminated) on suspended rail.  
 C.p.g. windows with flush glazing to top and sides; stainless steel bottom rail and glamorock faced riser.  
 Fibre board false ceiling (timber framing) V-jointed to form panels with framed illuminated ceiling panels as shown on plan.  
 Reception desk: line covered hardwood edged top with veneered sides and hardwood legs, cupboard to R.H. side and drawer pedestal to L.H. side.



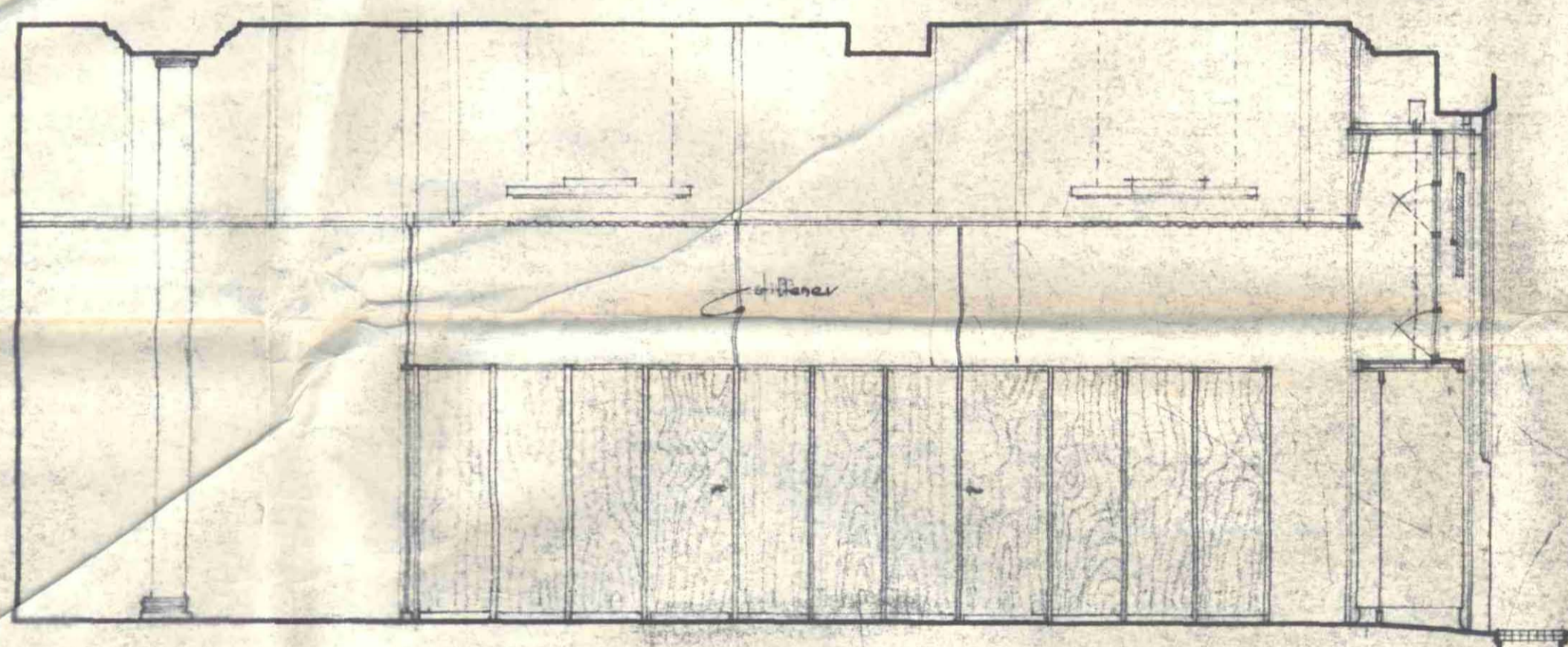
SECTION A-A thro' SHOW ROOM



PLAN OF BASEMENT

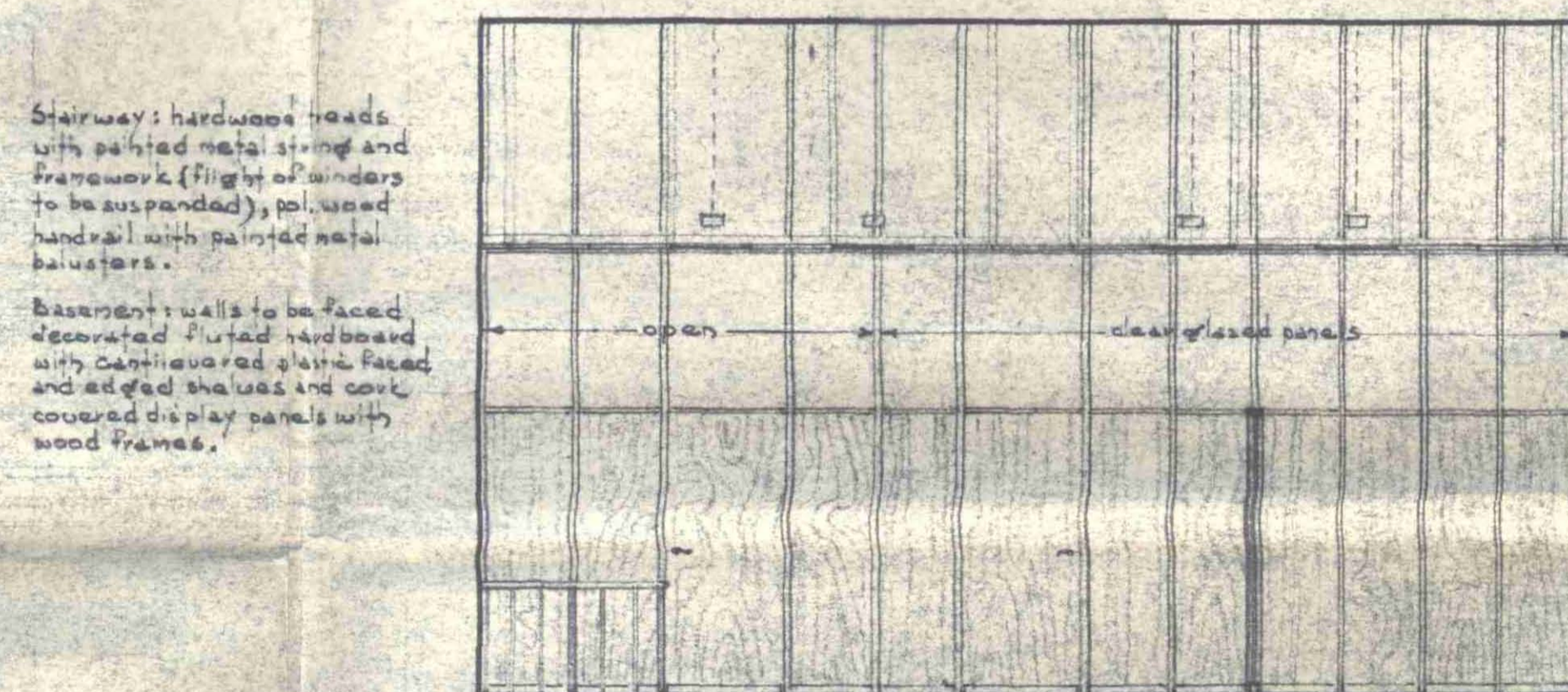


PLAN OF SHOWROOM



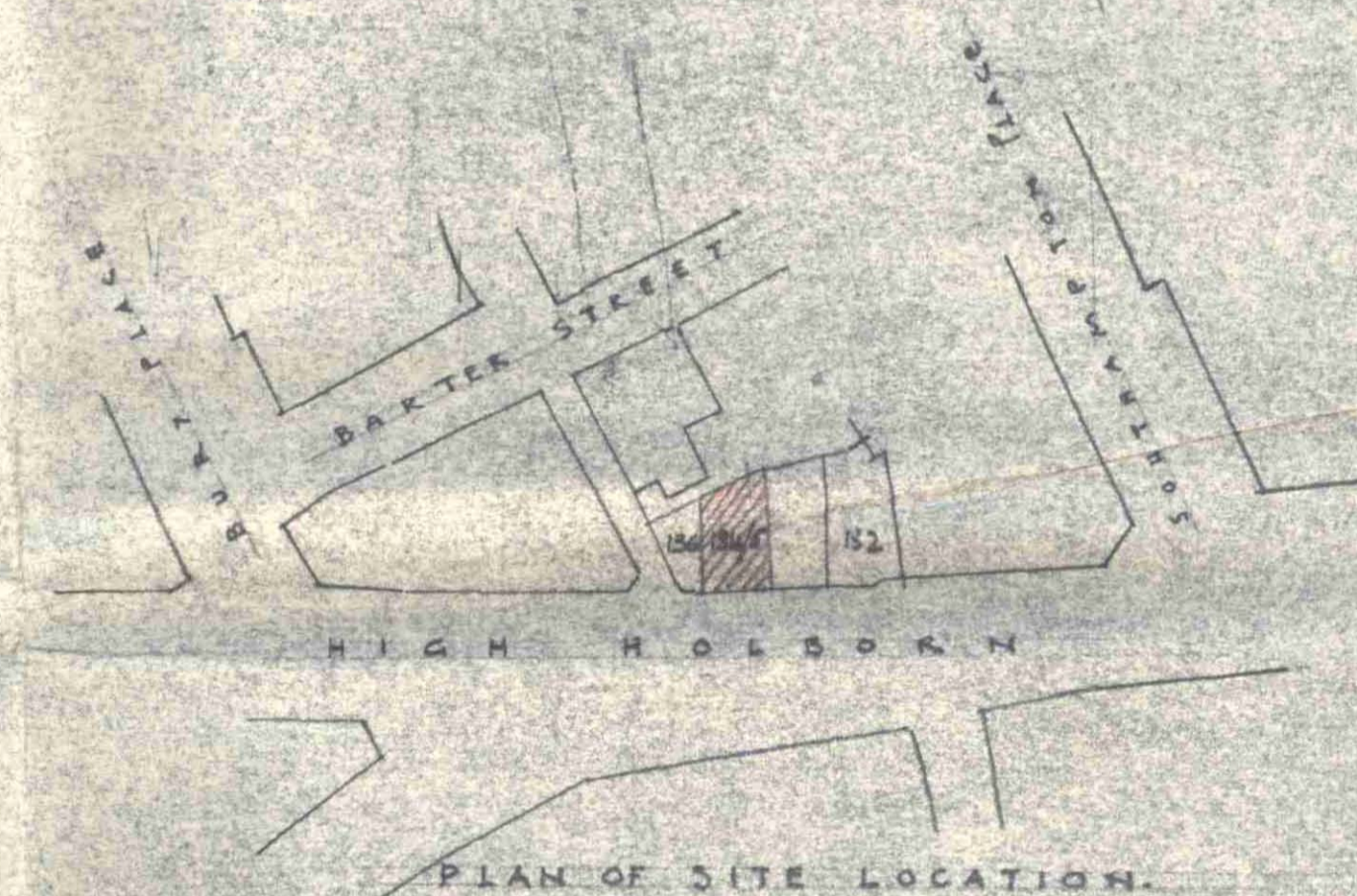
SECTION B-B thro' SHOWROOM

Section above entrance to have two opening panels.  
 Glamorock faced entrance surround with toughened glass door and sidelights with stainless steel top and bottom shoes.  
 Office seating: painted vertical wood members with veneered panels and doors.



SECTION C-C thro' SHOWROOM

Stairway: hardware heads with painted metal string and framework (flight of stairs to be suspended), pol. wood handrail with painted metal balusters.  
 Basement walls to be faced decorated painted hardboard with cantilevered glass faced and edged shelves and cov. covered display panels with wood frames.



PLAN OF SITE LOCATION

DRAWING NO. 20858		DATE 28 JAN 59	
SCALE: 1/4" = 1'-0"		NO. OF SHEETS: 1	
DRAWN BY: J.S.A.		DATE: 12 JAN 59	
BY: R. SAGE & CO. LTD. LONDON, W.1			
REF: 58/1415/1			