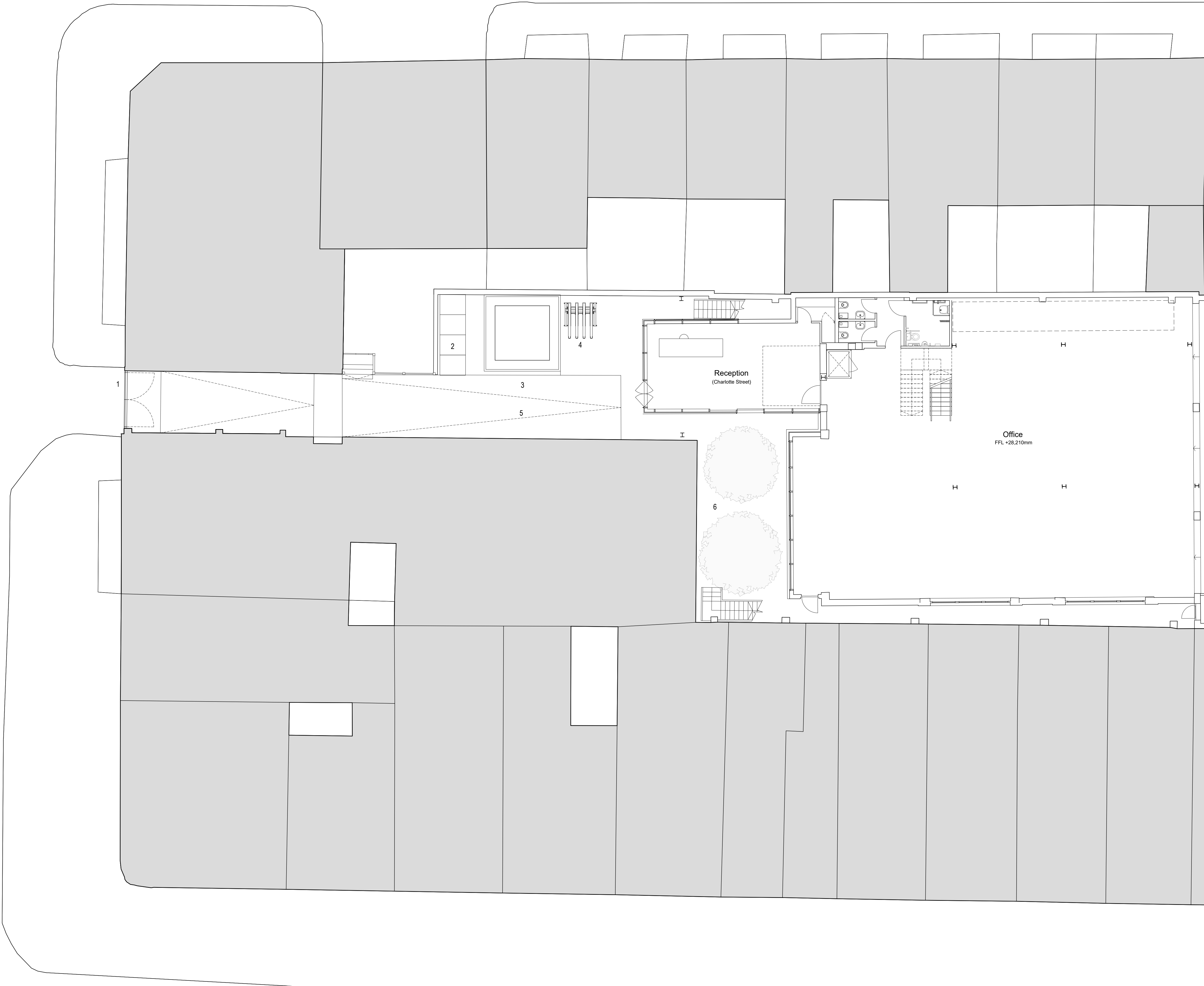


Scala Street

Charlotte Street



NOTES
 Fletcher Priest Architects is a Limited Liability Partnership registered in England and Wales (OC336568) at the below address. = this drawing is to be read in conjunction with the design risk assessment prepared by fpa. = this drawing is to be read in conjunction with other drawings and specification produced by fpa and other members of the design team. = all dimensions are in millimeters unless otherwise stated. = do not scale this drawing. = any discrepancies in dimensions are to be reported to the architect. = all information subject to detail site survey.

- Key
1. New Charlotte Street gate with controlled access
 2. Waste storage
 3. Screened enclosure around UKPN substation
 4. Cycle storage
 5. Landscaping and levelling
 6. Landscaped courtyard amenity
 7. New Whitfield Street entrance location with raked metal portico
 8. New finish to existing upstands to match existing fenestration
 9. Entrance to basement cycle and shower facilities
 10. Level 2 screened external south-facing terrace amenity
 11. External duct clad in natural anodised aluminium
 12. Level 4 external north-west facing terrace amenity
 13. Level 4 external east facing terrace amenity and new balustrade
 14. Widened and levelled terrace access door
 15. New plant enclosure
 16. New lift overrun (+400mm on existing)
 17. New stair access to roof
 18. Unisex shower facilities
 19. Basement cycle storage
 20. Electrical switchroom
 21. Watertank
 22. Dry riser outlet (detail and location TBC)

REV	DESCRIPTION	TH	NW	161219
REV	DESCRIPTION	BY	CHK	DATE
-	Issued for planning	TH	NW	161219

FOR PLANNING

Aviva Investors Pensions Ltd
 31-37 Whitfield Street

20 GA Plans
Proposed Charlotte Street Entrance Plan

DRAWING NUMBER / REVISION
A 1496 GA 2010 -

SCALE
 1:100 @A1 1:200 @A3
 DATE / DRAWN BY / CHECKED BY
 22.05.2019 TH / RN

fletcher priest architects
london + köln + riga
 middlesex house
 34/42 cleveland st
 london W1T 4JE
 t +44 [0]20 7034 2200
 f +44 [0]20 7637 5347
 www.fletcherpriest.com

Goode Street