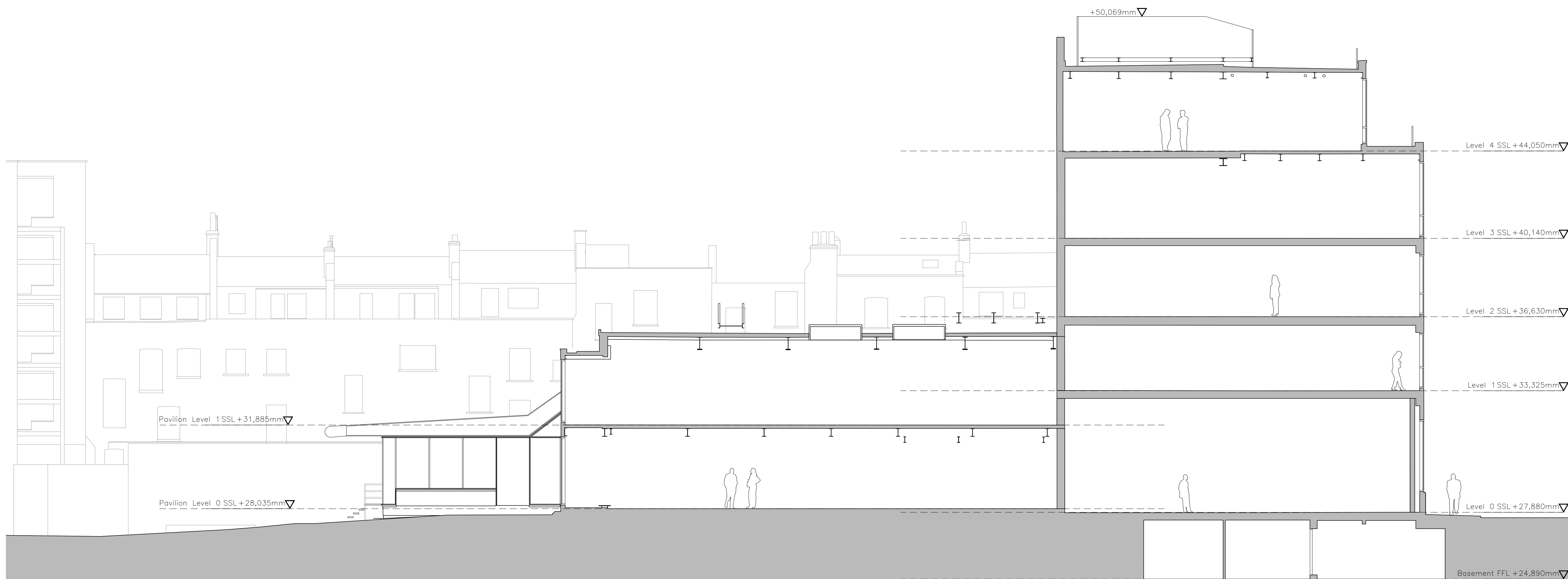
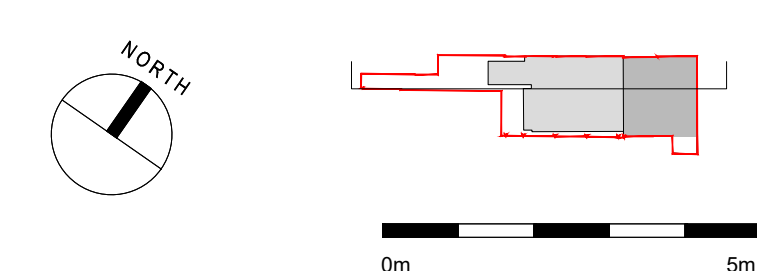


NOTES
 Fletcher Priest Architects is a Limited Liability Partnership registered in England and Wales (OC336568) at the below address. = this drawing is to be read in conjunction with the design risk assessment prepared by fpa. = this drawing is to be read in conjunction with other drawings and specification produced by fpa and other members of the design team. = all dimensions are in millimeters unless otherwise stated. = do not scale this drawing. = any discrepancies in dimensions are to be reported to the architect. = all information subject to detail site survey.



REV	DESCRIPTION	TH	NW	161219
-	Issued for planning	TH	NW	161219

FOR PLANNING



Aviva Investors Pensions Ltd
 31-37 Whitfield Street

12 GA Existing Sections
 Existing Long Section

DRAWING NUMBER / REVISION
A 1496 GA 1200 -

SCALE
 1:100 @A1 1:200 @A3
 DATE / DRAWN BY / CHECKED BY
 22.05.2019 TH / RN

fletcher priest architects
 london + köln + riga
 middlesex house
 34/42 cleveland st
 london W1T 4JE
 t +44 [0]20 7034 2200
 f +44 [0]20 7637 5347
 www.fletcherpriest.com