

51450

- NOTES
- 1 The Contractor must check and confirm dimensions.
  - 2 All discrepancies are to be reported to and resolved by the Architects before works are commenced.
  - 3 This drawing is not to be scaled.
  - 4 All work and materials to be in accordance with the London Building Acts and the London Constructional Bylaws or the Building Regulations and to comply with all relevant codes of practice and British Standards.

49850

46850

45850 F.C.L.

43250 5TH F.F.L. ▽

42832 ▽

42432 ▽

42250 F.C.L.

39650 4TH F.F.L. ▽

38650 F.C.L.

36050 3RD F.F.L. ▽

35050 F.C.L.

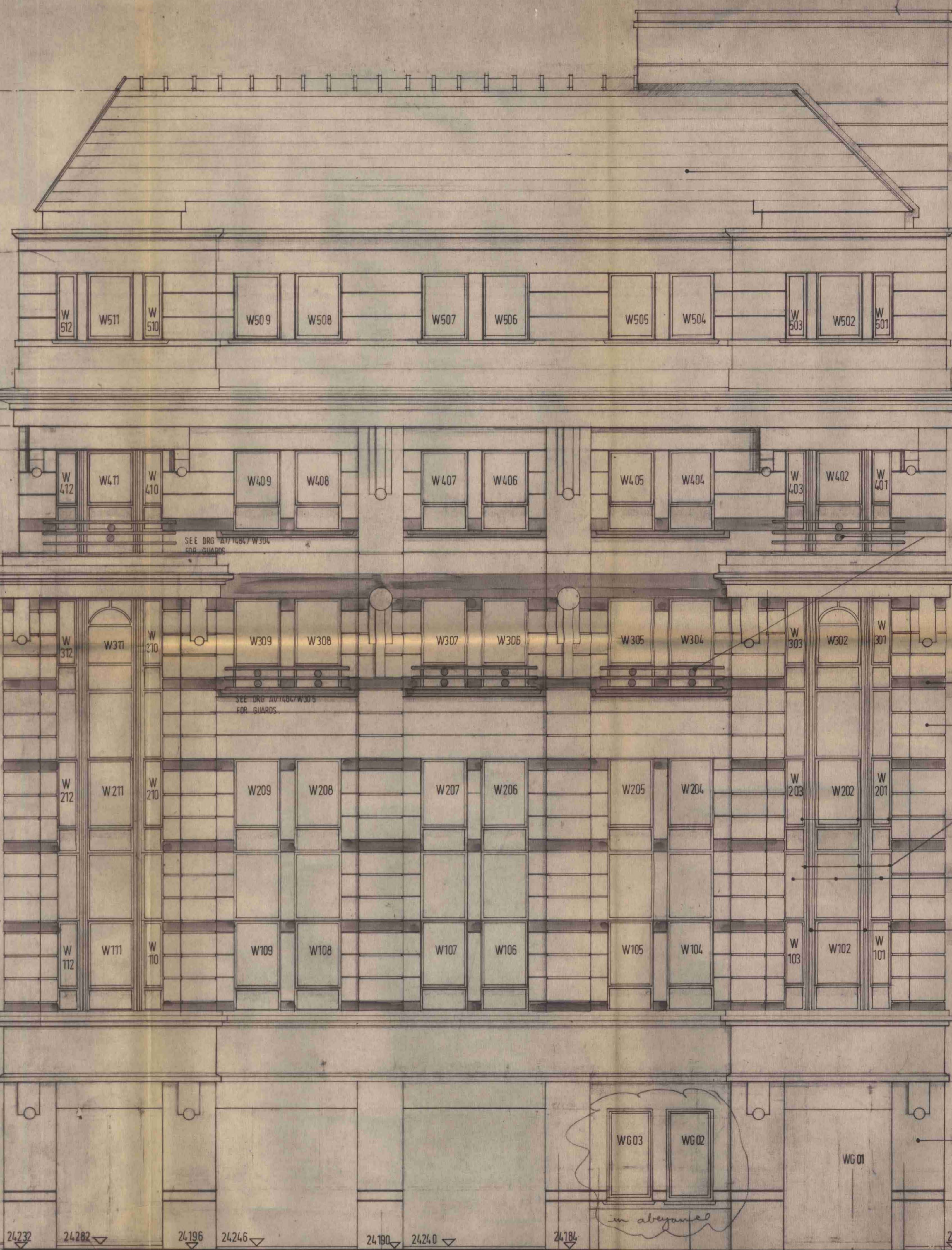
32450 2ND F.F.L. ▽

31450 F.C.L.

28850 1ST F.F.L. ▽

27850 F.C.L.

24300 G.F. F.F.L. RETAIL



Office Roof: Natural Dark Grey Slate

Offices external metalwork: Anodised aluminium Sandolor C64-3

Polished Granite: Juparana

Farges Limestone: Farges Contrapass

Window Frames: Anodised Aluminium Sandolor Colour C64-3

Window Spandrel Panels: Anolok Colour Anolok II Blue/Grey

Bay Window Mullions: Anodised Aluminium Anolok Colour 547

Farges Limestone: Farges Contrapass

25264

24364 24,200 F.F.L. ENTRANCE

LONDON BOROUGH OF HAMMERSMITH AND FULHAM  
TOWN AND COUNTRY PLANNING ACTS  
24 OCT 1989  
PLANS APPROVED  
ON BEHALF OF THE COUNCIL

Revision	Date



**ROLFE JUDD**  
planning architecture interiors

Old Church Court, Claylands Road, London SW9 1NZ Telephone 01 582 7979

Client  
**THE HAMMERSON GROUP**

Project  
**133 - 136 HIGH HOLBORN AND BARTER ST.**

Drawing  
**HIGH HOLBORN ELEVATION**

Scale	Date	Drawn	Checked
1:50	10.8.88	C.D.W.	

Drawing No.  
**AV14841 T.P. 100**