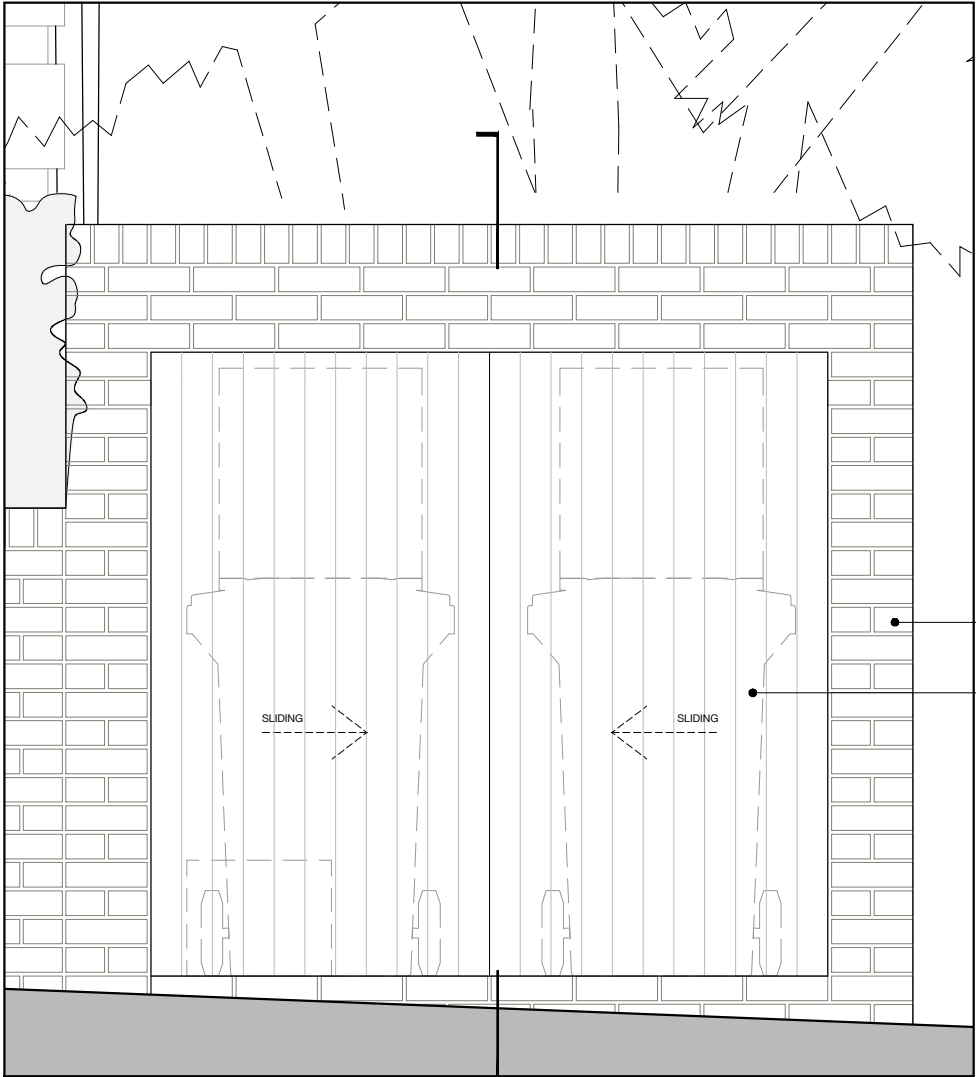
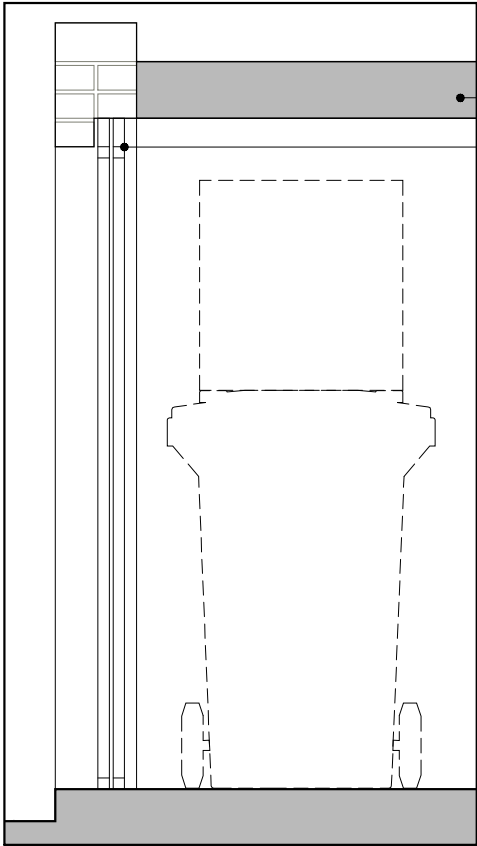


P208.01
EXISTING
PART ELEVATION 1:20



P208.02
PROPOSED
PART ELEVATION 1:20



P208.03
PROPOSED
PART SECTION 1:20

© ARCHITECT'S COPYRIGHT RETAINED

GENERAL NOTES

- 1 All dimensions to be checked on site.
- 2 Use figured dimensions only. Queries to be directed to the Architect.
- 3 Refer to Structural Engineer's drawings for details relating to structure
- 4 Any discrepancies between the Architect's drawings and those by any other party to be reported immediately.
- 5 All drawings are not for construction unless explicitly marked for this purpose.

GENERAL NOTES ON MATERIALS

Materials to comply with appropriate British Standards or Agreement Certificate stamped and independently certified or otherwise to show their suitability. Materials should be in accordance with BS8000 series of documents and other accepted good practice (e.g. Quality assured to ISO9000).

KEY PLAN

Bin store reduced in size

Timber sliding doors

Bin store reduced in size

Timber sliding doors

rev	date	amendment
A	12.12.19	AMENDED DETAIL TO BIN STORE
-	18.11.19	ADDED DETAIL TO BIN STORE

SC DA	SODA Nine Compton Courtyard 40 Compton Street London EC1V 0BD hello@sodastudio.co.uk sodastudio.co.uk
------------------------	--

job title 30 HEATH DRIVE CHARLIE GREEN

drawing title PROPOSED DETAILS BIN STORE

status	PLANNING	drawing no.	revision
scale	1:20 @A3 1:10 @A1	P208	A
job no.	A358		

