

T2-T3 PUBLIC REALM

KINGS CROSS CENTRAL

Applied Landscape Design

Materials Tracker to Discharge:

Planning Application ref.: 2019/4476/P

Reserved matter condition 2C

Building T2-T3, Kings Cross Central

ALD Project Ref: 830/19

Document Ref: ALD830_RP901

Document Revision: P01

Current Issue Date: 16.12.2019

ALD working date: 16.12.2019

Reason For Issue: PLANNING

Prepared By: Applied Landscape Design Ltd
Landscape Architect

Client: ARGENT



INTRODUCTION

This document has been prepared to discharge the following planning conditions as highlighted below:

Application Ref. 2019/4476/P- T2-T3 Kings Cross

CONDITION	DETAILS OF CONDITION	NOTES
2	Prior to commencement of the relevant part of the development hereby approved, the following details shall be submitted to and approved in writing by the Local Planning Authority.	
2A	All external materials and finishes for the development shall be those approved under permission reference 2019/1850/P.	Not covered within this document
2B	All windows and external doors shall be implemented in accordance with the details approved under permission reference 2019/1850/P.	Not covered within this document
2C	Details including samples panel of typical paving, setts and other hard landscape surface treatments, including details of the benches. The samples to demonstrate all materials and typical variations of pattern relationships within those materials;	Information included within this document
2D	Details of landscaping features and plant species to be incorporated within the terraces at the ninth and tenth floors; and	Not covered within this document
2E	Details of lighting within the public realm, to include location, design, specification, fittings and fixtures;	Not covered within this document

NOTE: Information provided does not cover details relating to roof gardens or terraces (to be submitted separately by others).

PAVING MATERIALS

Material Code	Material Details	Location	Detail drawing number	Supplier	Photo	Location example
NATURAL STONE PAVING, SETTS & GRAVELS						
P1	Scoutmoor Sandstone Paving 600-900mm long x 600mm wide x 50mm deep Diamond Sawn Finish	To footway east of Building T2/T3	ALD830_LD701	Miller Druck		R1 footpaths, Handyside Street / Site wide Kings Cross
P2	Granite Setts 200mm - 300mm random lengths x 100mm width x 150mm depth Bush Hammered Colour Mix: 10% Smokey Black, 30% Albion Grey, 25% Millennium Mauve, 25% Millennium Pink, 10% Eleanor Red	Raised tables/crossing points to Canal Reach	ALD830_LD702 & ALD830_LD708	Miller Druck		Stable Street / Sitewide Kings Cross
P3	Reclaimed Granite Setts - 'Rough-Top' Band 1: 120-250mm x 80-100mm wide x approx. 100mm deep Band 2: 120-250mm x 101-115mm wide x approx. 100mm deep Band 3: 120-250mm x 116-125mm wide x approx. 100mm deep Sourced from wider Kings Cross Central site (subject to availability or approved source)	Various locations west of Canal Reach (cycle parking areas & tree surround)	ALD830_LD705 & ALD830_LD713	Miller Druck		Handyside Street / Sitewide Kings Cross

PAVING MATERIALS



Material Code	Material Details	Location	Detail drawing number	Supplier	Photo	Location example
P4	Scoutmoor Sandstone Paving 90mm length x 90mm width x 50mm depth Diamond Sawn finish	T2/T3 main entrance (clam doors)	ALD830_LD732	Miller Druck		North & East of building P1
P5	Crossland Hill sandstone blister tactile paving 400mm long x 400mm wide x 50mm deep	(uncontrolled crossings)	ALD830_LD703 & ALD830_LD704	Miller Druck		Handyside Street / Goods Way / Sitewide Kings Cross
P6	Royal White granite chippings 6-10mm	Tree surround north east of Building T2/T3 adjacent Canal Reach carriageway	ALD830_LD713	Miller Druck		Sitewide Treepits

PAVING MATERIALS

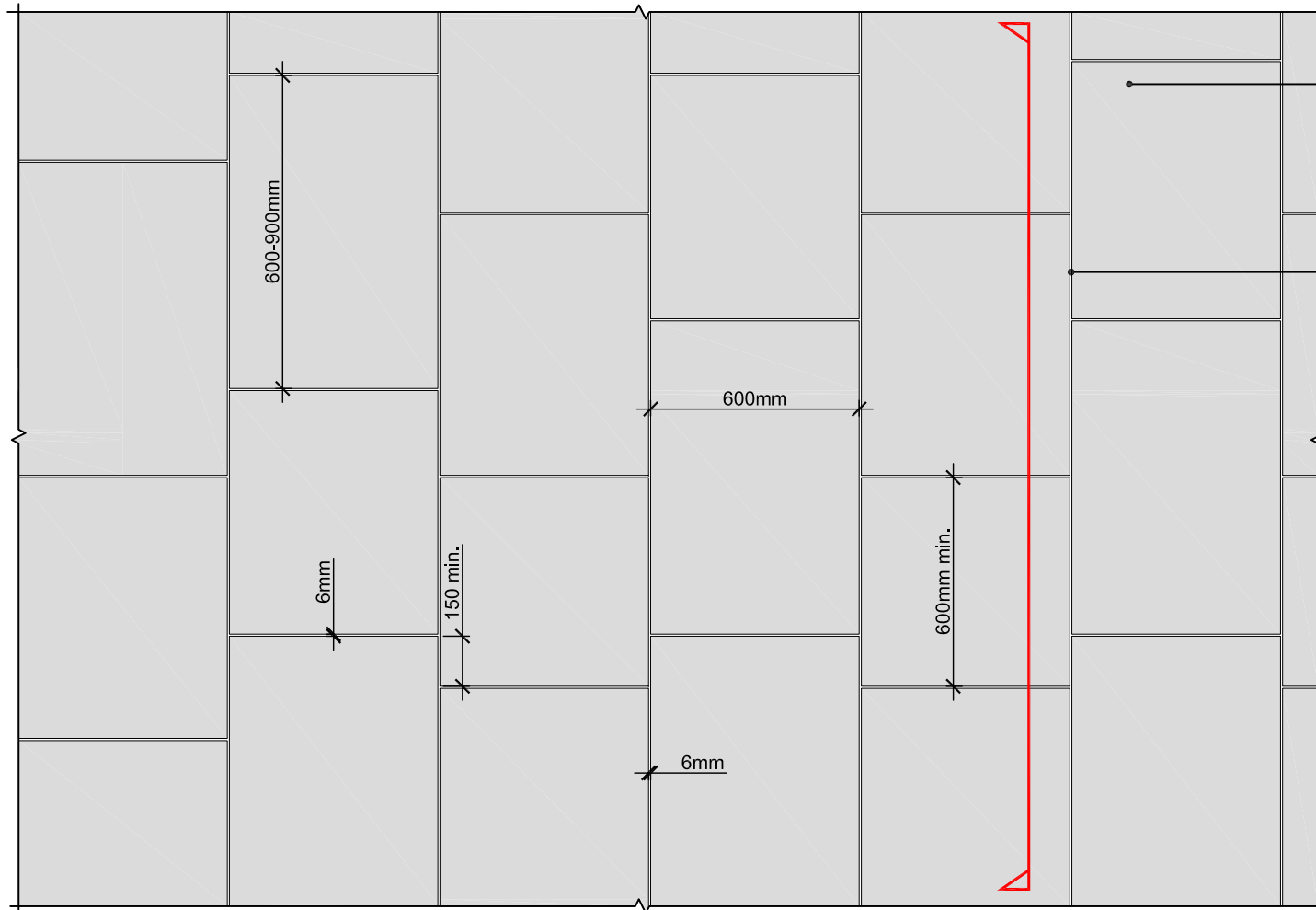
Material Code	Material Details	Location	Detail drawing number	Supplier	Photo	Location example
---------------	------------------	----------	-----------------------	----------	-------	------------------

KERBS & EDGES

E1	Granite Kerb / Edging 1000mm length x 300mm width x 200mm depth Fine Picked Royal White	To Carriageways East of T2/T3	ALD830_LD706, ALD830_LD707, ALD830_LD708 & ALD830_LD713.	Miller Druck		Stable Street / Site wide Kings Cross
E2	Stainless Steel Tree Surround 10mm thick grade 316 stainless steel tree surround, satin polished finish	Tree surround north east of Building T2/T3 adjacent Canal Reach carriageway	ALD830_LD713	Kent Stainless		Sitewide Treepits
E3	Aluminium Edging 6.5mm thick aluminium edge.	To External Planting Beds	ALD830_LD705 & ALD830_LD7015.	Kinley	Image not representative of T2/T3 paving but illustrates principle of flush 6.5mm aluminium edge 	Product/material not currently installed on site

Material Code	Material Details	Location	Detail drawing number	Supplier	Photo	Location example
STREET FURNITURE						
F1	Sheffield satin polished stainless steel cycle stand 1000mm height (750mm above ground) x 1000mm width x 50mm ø	Various locations west of Canal Reach	ALD830_LD705	Kent Stainless		Sitewide Kings Cross
F2	Proposed Hardwood Timber Bench 2340mm Length x 450mm (seating platform) / 640mm (overall) Width x 1000mm Height Highlife III, Cumaru timber bench with armrests and backrests	Various locations adjacent planting beds east of T2/T3	ALD830_LD715	Streetlife	 Proposed bench to include arm rests	First use of Highlife III Bench

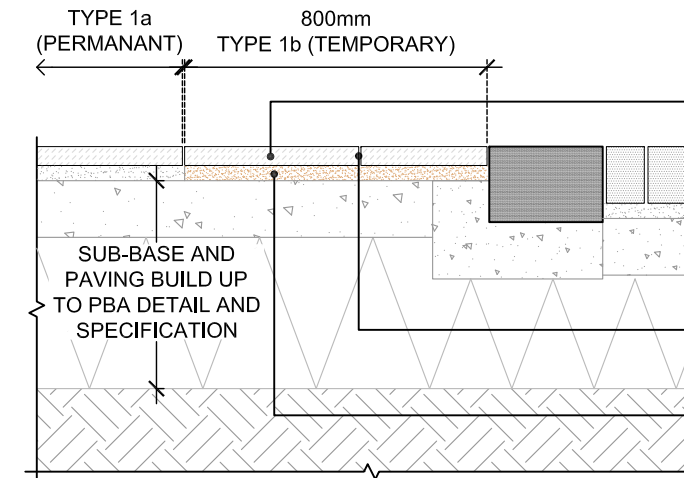
APPENDIX A: T2-T3 PUBLIC REALM - PAVING TYPICAL DETAILS & LANDSCAPE GENERAL ARRANGEMENT PLAN



SCOUTMOOR SANDSTONE PAVING TYPE 1a/b - DIAMOND SAWN FINISH 600mm WIDE x 600-900mm LENGTHS x 50mm DEEP BY MILLER DRUCK OR EQUAL AND APPROVED.

- MINIMUM OVERLAP BETWEEN PAVING UNITS = 150mm
- MINIMUM PAVING UNIT AT KERB INTERFACE = 300mm.
- WHERE SANDSTONE ABUTS OTHER PAVING, BUILDING FACADE OR PLANTER EDGE MINIMUM UNIT LENGTH = 300mm

6mm TUFFGROUT JOINT COLOURED TO MATCH PAVING BY STEINTEC OR EQUAL & APPROVED



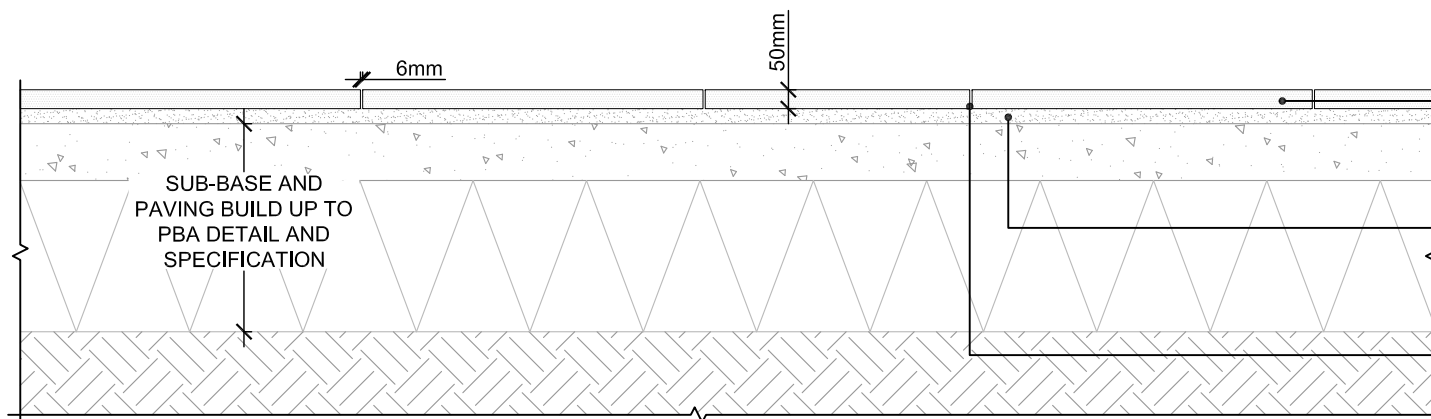
SCOUTMOOR SANDSTONE PAVING TYPE 1b (TEMPORARY) - DIAMOND SAWN FINISH 600mm WIDE x 600-900mm LENGTHS x 50mm DEEP BY MILLER DRUCK OR EQUAL AND APPROVED. **NOTE:** TO BE REMOVED AND REPLACED WITH TACTILE UNITS ONCE CROSSING POINT ESTABLISHED UNDER FUTURE WORKS.

6mm SAND JOINTS TO TEMPORARY SANDSTONE PAVING

40mm SHARP SAND / CEMENT BEDDING (6:1) TO TEMPORARY SANDSTONE PAVING

01a DETAIL PLAN OF SANDSTONE PAVING -TYPE 1a/b TO FOOTWAY EAST OF T2/T3
SCALE: 1:20 @ A3

01c DETAIL SECTION THROUGH TEMPORARY SANDSTONE PAVING -TYPE 1b
SCALE: 1:20 @ A3



SCOUTMOOR SANDSTONE PAVING TYPE 1a (PERMANENT) - DIAMOND SAWN FINISH 600mm WIDE x 600-900mm LENGTHS x 50mm DEEP BY MILLER DRUCK OR EQUAL AND APPROVED.

40mm DEPTH TUFFBED BEDDING MORTAR BY STEINTEC OR EQUAL AND APPROVED

6mm TUFFGROUT JOINT COLOURED TO MATCH PAVING BY STEINTEC OR EQUAL & APPROVED

01b DETAIL SECTION THROUGH SANDSTONE PAVING -TYPE 1a TO FOOTWAY EAST OF T2/T3
SCALE: 1:20 @ A3

LANDSCAPE ARCHITECT:



The Threshing Barn
Bignell Park Barns
Chesterton
Oxfordshire
OX26 1TD

Tel: 01869 249776
Fax: 01869 327513
Email: mail@appliedlandscape.co.uk

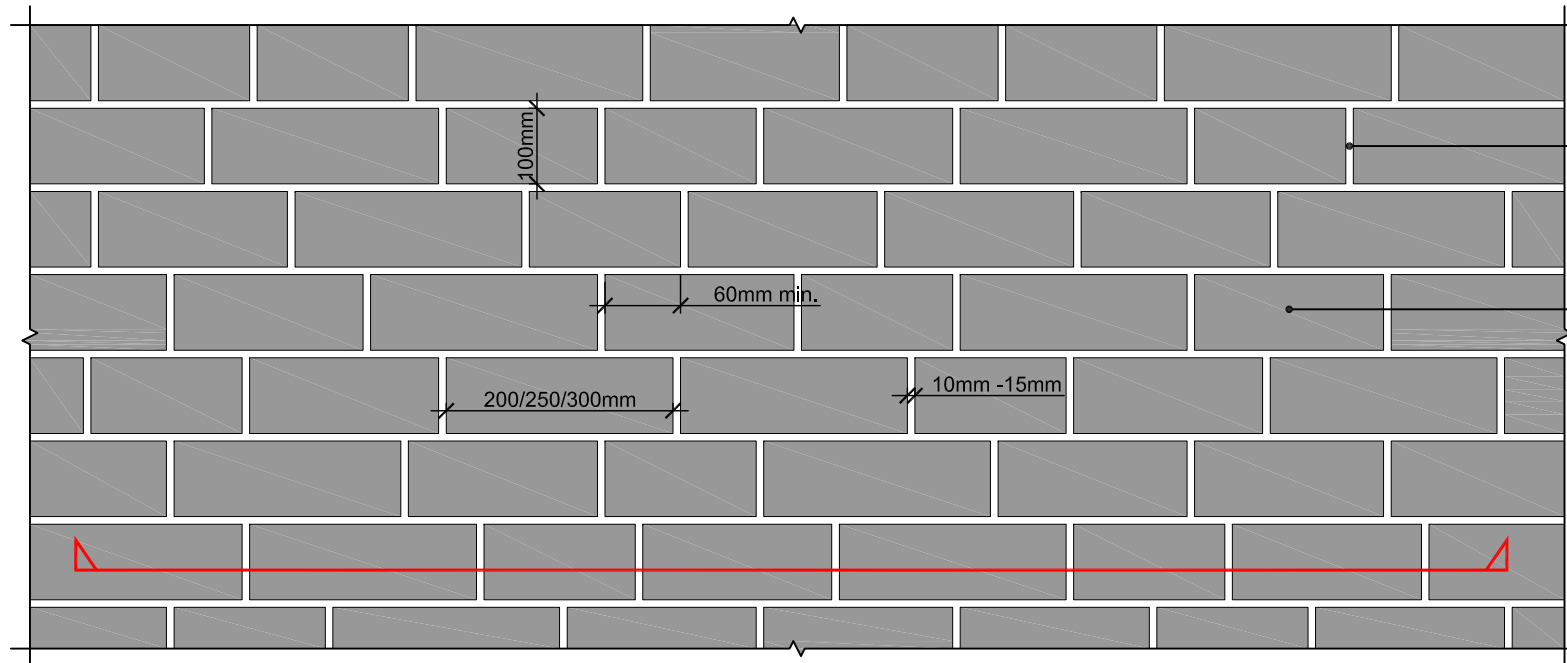
© 2019 Applied Landscape Design Limited. All rights reserved.

Rev.	Update	Date
P03	STAGE 4 ISSUE: EMPLOYERS REQUIREMENTS	22.11.19
P02	DETAIL 01c ADDED	08.10.19
P01	FIRST ISSUE FOR INFORMATION	27.09.19

PROJECT:	KXC: BUILDING T2/T3 PUBLIC REALM
CLIENT:	KCCGPL

drawn:	MF	checked:	KmJ
scale:	1:20 @ A3	date:	27.09.2019
status:	INFORMATION	xref file ref:	ALD830_LDbase

DRAWING TITLE:		
HARDWORKS DETAIL - SANDSTONE PAVING TYPE 1a/b		
PROJECT NO.	DRAWING NUMBER:	REVISION:
ALD830	LD701	P03



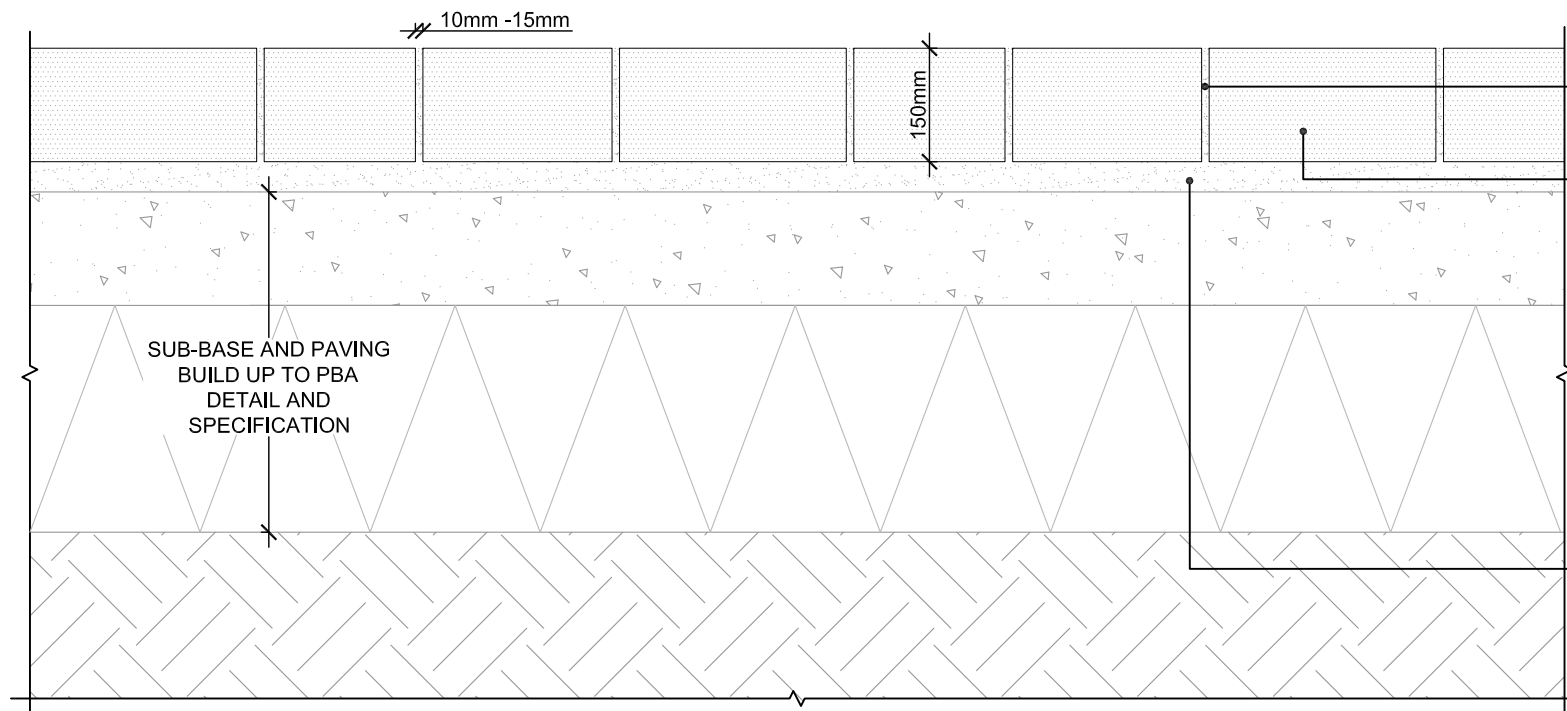
10-15mm TUFFGROUT JOINT COLOURED TO MATCH PAVING BY STEINTEC OR EQUAL & APPROVED

GRANITE SETTS TYPE 1 - FINE PICKED
100mm WIDE x 200/250/300mm LONG x 150mm DEEP
LAID IN RANDOM PATTERN BY MILLER DRUCK OR EQUAL AND APPROVED.

COLOUR MIX: ALBION GREY (30%)
MILLENNIUM MAUVE (25%)
MILLENNIUM PINK (25%)
ELEANOR RED (10%)
SMOKEY BLACK (10%)

- MINIMUM UNIT LENGTH AT INTERFACE WITH OTHER PAVING = 100mm.
- MINIMUM OVERLAP BETWEEN PAVING UNITS = 60mm

02a PLAN LAYOUT OF GRANITE SETTS - TYPE 1
SCALE: 1:10 @ A3



10-15mm TUFFGROUT JOINT COLOURED TO MATCH PAVING BY STEINTEC OR EQUAL & APPROVED

GRANITE SETTS TYPE 1 - FINE PICKED
100mm WIDE x 200/250/300mm LONG x 150mm DEEP
LAID IN RANDOM PATTERN BY MILLER DRUCK OR EQUAL AND APPROVED.

COLOUR MIX : ALBION GREY (30%)
MILLENNIUM MAUVE (25%)
MILLENNIUM PINK (25%)
ELEANOR RED (10%)
SMOKEY BLACK (10%)

MINIMUM UNIT LENGTH AT INTERFACE WITH OTHER PAVING = 100mm.
(ADJACENT PAVING VARIES)

40mm DEPTH TUFFBED BEDDING MORTAR BY STEINTEC OR EQUAL AND APPROVED

02b SECTION THROUGH GRANITE SETTS -TYPE 1
SCALE: 1:10 @ A3

LANDSCAPE ARCHITECT:



The Threshing Barn
Bignell Park Barns
Chesterton
Oxfordshire
OX26 1TD

Tel: 01869 249776
Fax: 01869 327513
Email: mail@appliedlandscape.co.uk

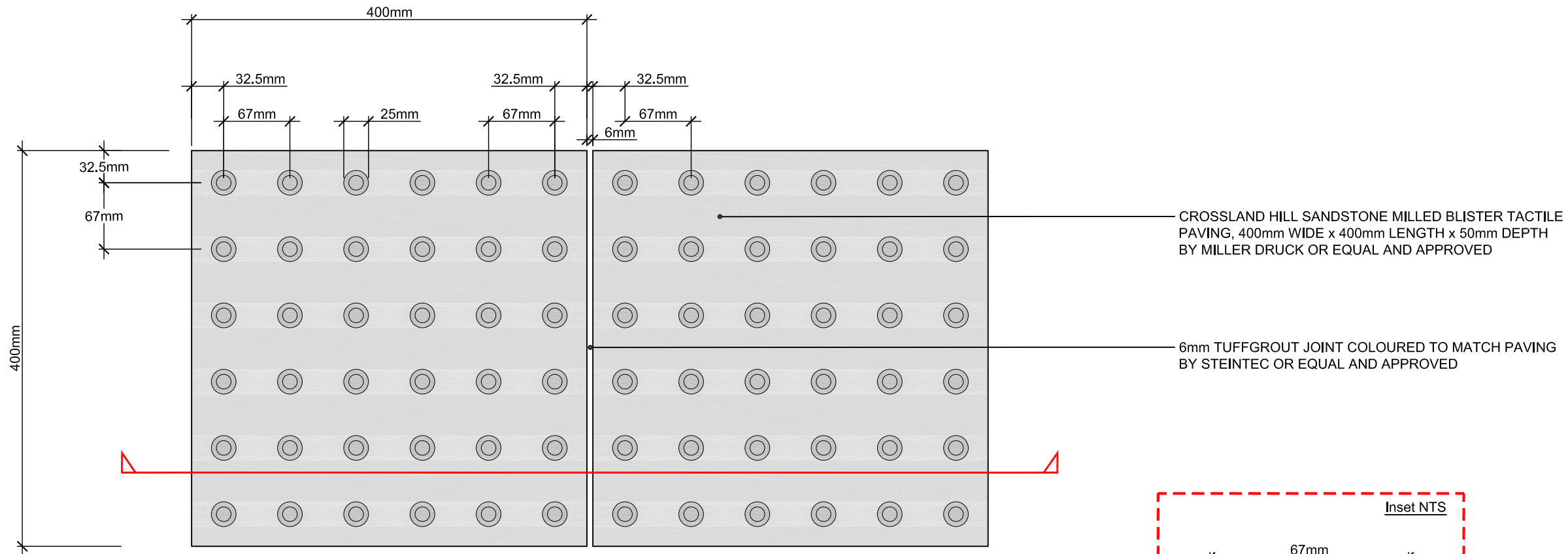
© 2019 Applied Landscape Design Limited. All rights reserved.

Rev.	Update	Date
P02	STAGE 4 ISSUE: EMPLOYERS REQUIREMENTS	22.11.19
P01	FIRST ISSUE FOR INFORMATION	27.09.19

PROJECT:	KXC: BUILDING T2/T3 PUBLIC REALM
CLIENT:	KCCGPL

drawn:	MF	checked:	KmJ
scale:	1:10 @ A3	date:	27.09.2019
status:	INFORMATION	xref file ref:	ALD830_LDbase

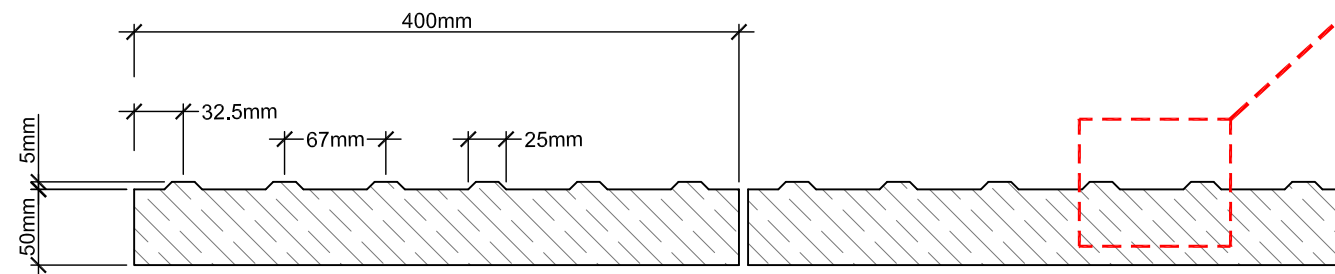
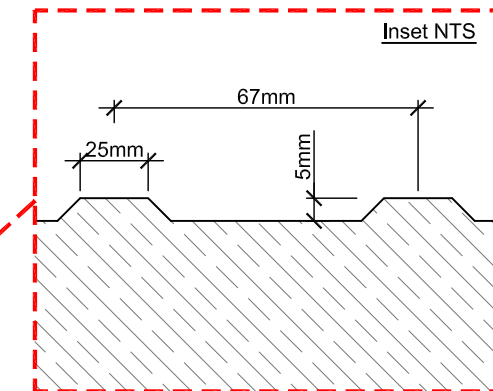
DRAWING TITLE:		
HARDWORKS DETAIL - GRANITE SETTS TYPE 1		
PROJECT NO.	DRAWING NUMBER:	REVISION:
ALD830	LD702	P02



CROSSLAND HILL SANDSTONE MILLED BLISTER TACTILE PAVING, 400mm WIDE x 400mm LENGTH x 50mm DEPTH BY MILLER DRUCK OR EQUAL AND APPROVED

6mm TUFFGROUT JOINT COLOURED TO MATCH PAVING BY STEINTEC OR EQUAL AND APPROVED

03a PLAN LAYOUT OF TACTILE PAVING
SCALE 1:5 @ A3



03b SECTION THROUGH TACTILE PAVING
SCALE 1:5 @ A3

LANDSCAPE ARCHITECT:



The Threshing Barn
Bignell Park Barns
Chesterton
Oxfordshire
OX26 1TD

Tel: 01869 249776
Fax: 01869 327513
Email: mail@appliedlandscape.co.uk

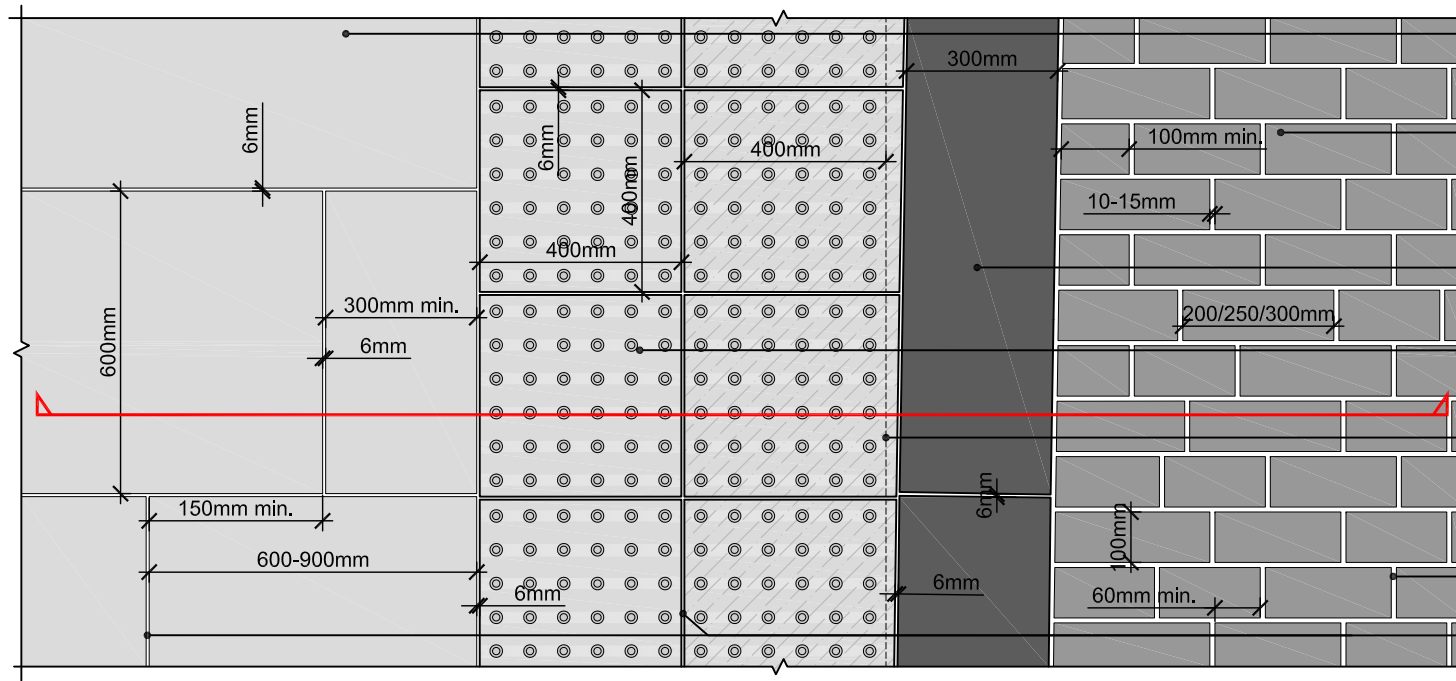
© 2019 Applied Landscape Design Limited. All rights reserved.

Rev.	Update	Date
P02	STAGE 4 ISSUE: EMPLOYERS REQUIREMENTS	22.11.19
P01	FIRST ISSUE FOR INFORMATION	27.09.19

PROJECT:	KXC: BUILDING T2/T3 PUBLIC REALM
CLIENT:	KCCGPL

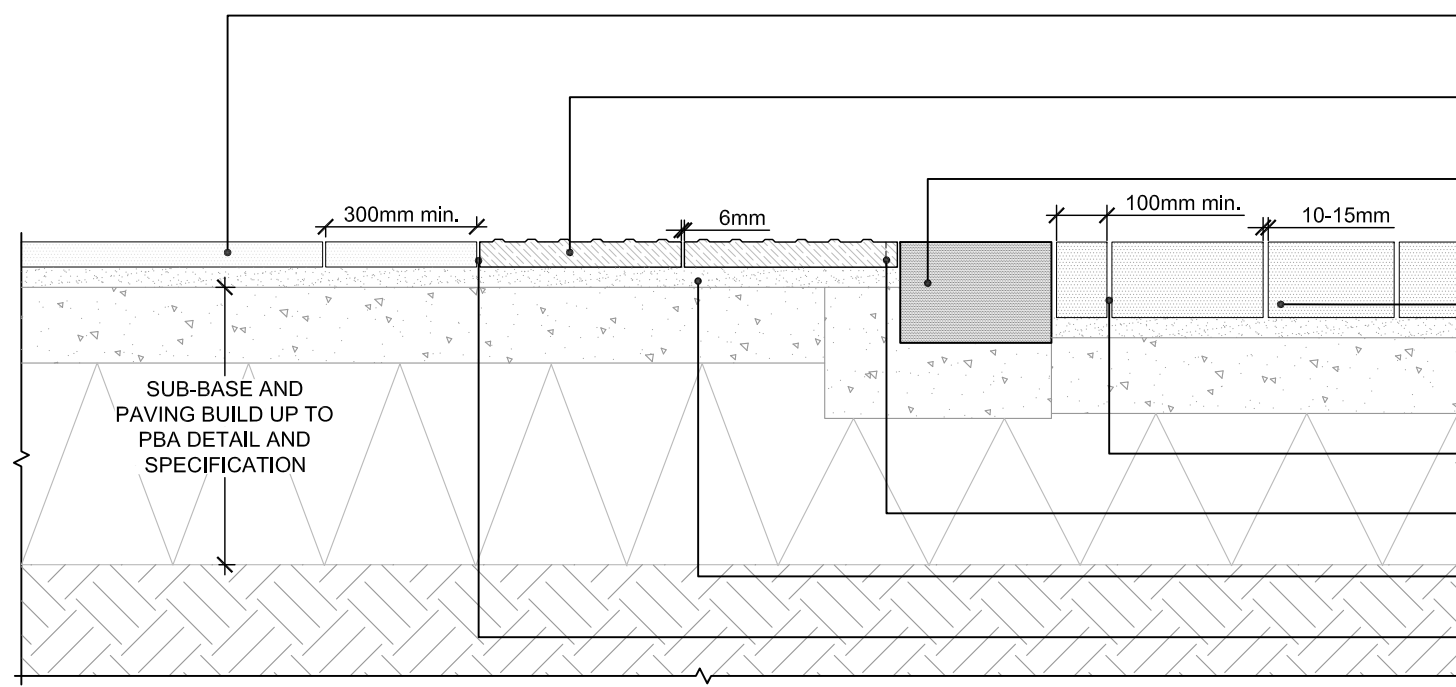
drawn:	MF	checked:	KmJ
scale:	1:5 @ A3	date:	27.09.2019
status:	INFORMATION	xref file ref:	ALD830_LDbase

DRAWING TITLE: HARDWORKS DETAIL - TACTILE PAVING		
PROJECT NO. ALD830	DRAWING NUMBER: LD703	REVISION: P02



- SCOUTMOOR SANDSTONE PAVING TYPE 1a - DIAMOND SAWN FINISH 600mm WIDE x 600-900mm LENGTHS x 50mm DEEP BY MILLER DRUCK OR EQUAL AND APPROVED.
- GRANITE SETTS TYPE 1 - FINE PICKED
100mm WIDE x 200/250/300mm LONG x 150mm DEEP. LAID IN RANDOM PATTERN BY MILLER DRUCK OR EQUAL AND APPROVED. COLOUR MIX : ALBION GREY (30%); MILLENNIUM MAUVE (25%); MILLENNIUM PINK (25%); ELEANOR RED (10%); SMOKEY BLACK (10%).
- FINE PICKED GRANITE KERB LAID FLUSH, ROYAL WHITE 300mm WIDE x 1000mm LONG x 200mm DEEP BY MILLER DRUCK OR EQUAL AND APPROVED.
- CROSSLAND HILL SANDSTONE MILLED BLISTER TACTILE PAVING BY MILLER DRUCK OR EQUAL AND APPROVED. 400mm WIDE X 400mm LONG X 50mm DEEP. INSTALLED WITH 6mm JOINTS IN A STACK BOND AS SHOWN.
- IN ORDER TO MAINTAIN ALIGNMENT WITH ADJACENT SCOUTMOOR UNITS WHILE ENSURING A MINIMUM OFFSET OF 800mm FROM THE KERB, OVERSIZED TACTILE UNITS ARE TO BE UTILISED TO AVOID THIN PAVING SLITHERS. MILLED BLISTERS NOT REQUIRED ON ADDITIONAL PORTION OF SLAB. MAXIMUM TOTAL UNIT SIZE REQUIRED, APPROX. 450mm. FOR LOCATIONS WHERE OVERSIZED UNITS ARE TO BE INSTALLED REFER TO ALD830_MP001.
- 10-15mm TUFFGROUT JOINT COLOURED TO MATCH PAVING BY STEINTEC OR EQUAL & APPROVED
- 6mm TUFFGROUT JOINT COLOURED TO MATCH PAVING BY STEINTEC OR EQUAL & APPROVED

04a PLAN LAYOUT OF TACTILE PAVING INTERFACE WITH FLUSH KERB
SCALE: 1:15 @ A3



- SCOUTMOOR SANDSTONE PAVING TYPE 1a - DIAMOND SAWN FINISH 600mm WIDE x 600-900mm LENGTHS x 50mm DEEP BY MILLER DRUCK OR EQUAL AND APPROVED.
- CROSSLAND HILL SANDSTONE MILLED BLISTER TACTILE PAVING BY MILLER DRUCK OR EQUAL AND APPROVED. 400mm WIDE X 400mm LONG X 50mm DEEP. INSTALLED WITH 6mm JOINTS IN A STACK BOND AS SHOWN.
- FINE PICKED GRANITE KERB LAID FLUSH, ROYAL WHITE 300mm WIDE x 1000mm LONG x 200mm DEEP BY MILLER DRUCK OR EQUAL AND APPROVED. KERB HAUNCHING AND FOOTING TO PBA DETAIL AND SPECIFICATION
- GRANITE SETTS TYPE 1 - FINE PICKED
100mm WIDE x 200/250/300mm LONG x 150mm DEEP. LAID IN RANDOM PATTERN BY MILLER DRUCK OR EQUAL AND APPROVED. COLOUR MIX : ALBION GREY (30%); MILLENNIUM MAUVE (25%); MILLENNIUM PINK (25%); ELEANOR RED (10%); SMOKEY BLACK (10%).
- 10-15mm TUFFGROUT JOINT COLOURED TO MATCH PAVING BY STEINTEC OR EQUAL & APPROVED
- OVERSIZED TACTILE UNIT AT KERB INTERFACE TO AVOID SLITHERS. REFER TO NOTE ABOVE FOR FURTHER INFO.
- 40mm DEPTH TUFFBED BEDDING MORTAR BY STEINTEC OR EQUAL AND APPROVED
- 6mm TUFFGROUT JOINT COLOURED TO MATCH PAVING BY STEINTEC OR EQUAL & APPROVED

04b SECTION THROUGH TACTILE PAVING INTERFACE WITH FLUSH KERB
SCALE: 1:15 @ A3

LANDSCAPE ARCHITECT:



The Threshing Barn
Bignell Park Barns
Chesterton
Oxfordshire
OX26 1TD

Tel: 01869 249776
Fax: 01869 327513
Email: mail@appliedlandscape.co.uk

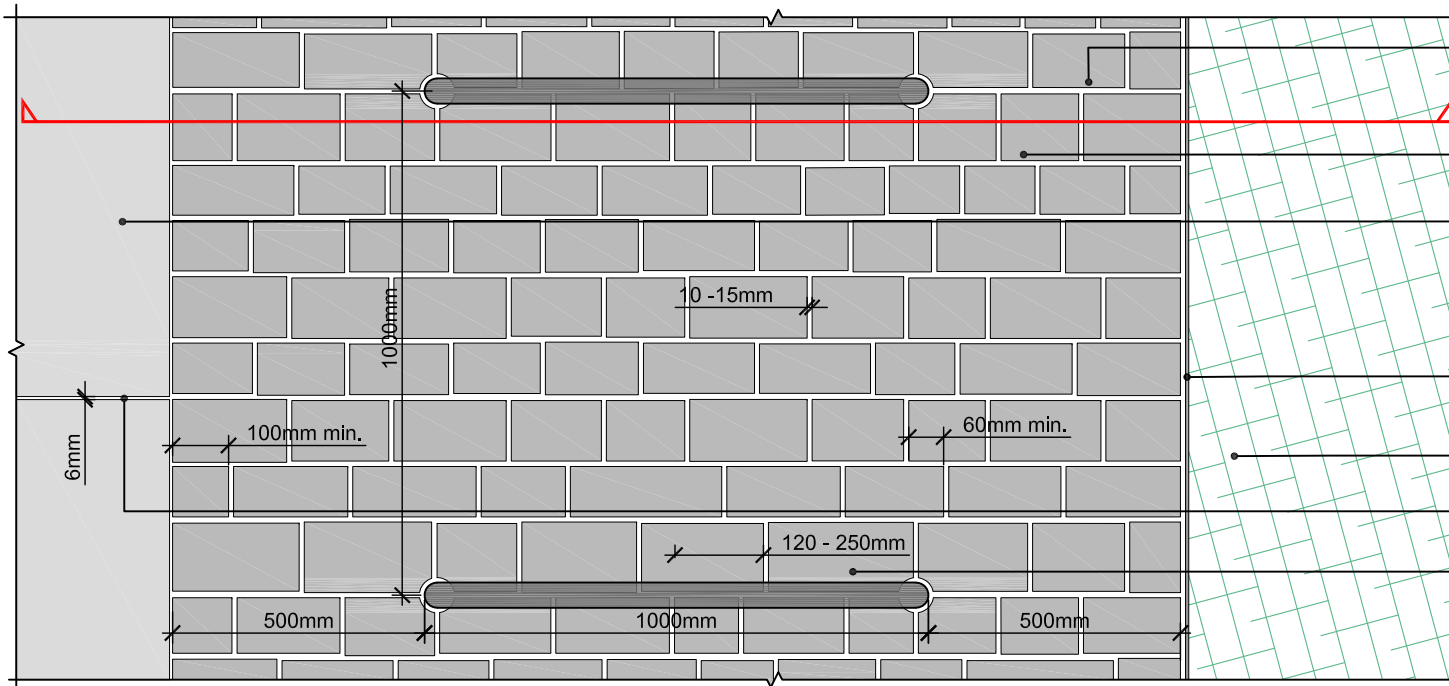
© 2019 Applied Landscape Design Limited. All rights reserved.

Rev.	Update	Date
P02	STAGE 4 ISSUE: EMPLOYERS REQUIREMENTS	22.11.19
P01	FIRST ISSUE FOR INFORMATION	27.09.19

PROJECT:	KXC: BUILDING T2/T3 PUBLIC REALM
CLIENT:	KCCGPL

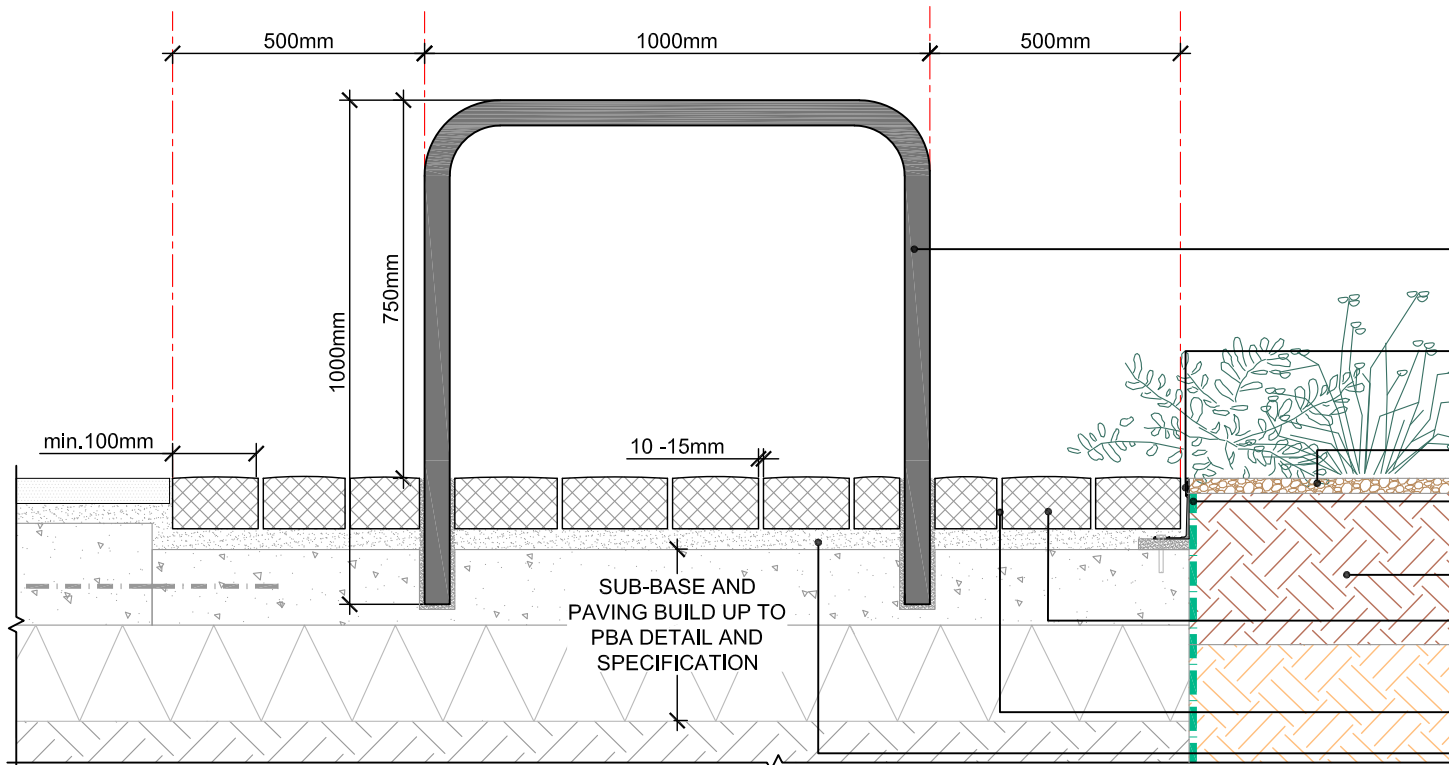
drawn:	MF	checked:	KmJ
scale:	1:15 @ A3	date:	27.09.2019
status:	INFORMATION	xref file ref:	ALD830_LDbase

DRAWING TITLE: HARDWORKS DETAIL - TACTILE PAVING INTERFACE WITH GRANITE KERB		
PROJECT NO. ALD830	DRAWING NUMBER: LD704	REVISION: P02

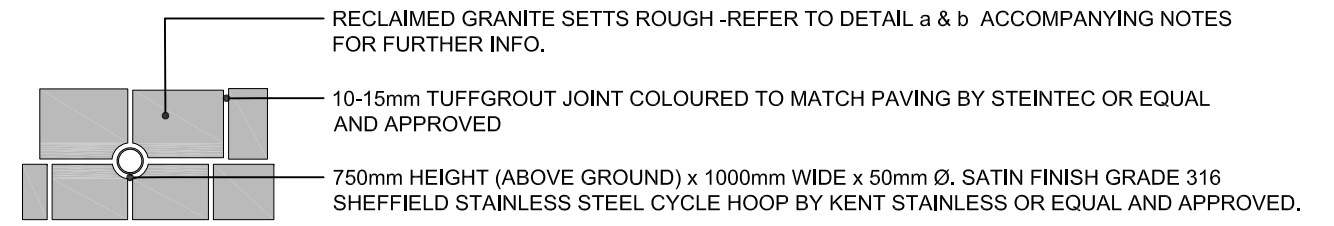


- RECLAIMED GRANITE SETTS ROUGH - SOURCED FROM SITE AND / OR APPROVED SOURCE. CONTRACTOR TO CONFIRM MIX AVAILABILITY. 120-250mm LENGTH x 3 BAND WIDTHS x APPROX. 100mm DEPTH. BAND 1- 90-105mm WIDTH; BAND 2 - 105-125mm WIDTH; BAND 3- 125-140mm WIDTH
- 10-15mm TUFFGROUT JOINT COLOURED TO MATCH PAVING BY STEINTEC OR EQUAL AND APPROVED
- SCOUTMOOR SANDSTONE PAVING TYPE 1a - DIAMOND SAWN FINISH 600mm WIDE x 600-900mm LENGTHS x 50mm DEEP BY MILLER DRUCK OR EQUAL AND APPROVED.
 - MINIMUM OVERLAP BETWEEN PAVING UNITS = 150mm
 - WHERE SANDSTONE ABUTS OTHER PAVING, BUILDING FACADE OR PLANTER EDGE MINIMUM UNIT LENGTH = 300mm
- 6.5mm THICK ALUMINUM EDGE, KINLEY ALUExcel 120mm OR EQUAL AND APPROVED. **NOTE:** DEPTH OF EDGE VARIES DEPENDENT ON LOCATION.
- PROPOSED PLANTING. TO NIGEL DUNNETT DESIGN AND SPECIFICATION.
- 6mm TUFFGROUT JOINT COLOURED TO MATCH PAVING BY STEINTEC OR EQUAL AND APPROVED.
- 750mm HEIGHT (ABOVE GROUND) x 1000mm WIDE x 50mm Ø. SATIN FINISH GRADE 316 SHEFFIELD STAINLESS STEEL CYCLE HOOP BY KENT STAINLESS OR EQUAL AND APPROVED.

05a PLAN LAYOUT OF STAINLESS STEEL CYCLE HOOP INTERFACE WITH RECLAIMED GRANITE SETTS
SCALE: 1:15 @ A3



05b SECTION OF STAINLESS STEEL CYCLE HOOP INTERFACE WITH RECLAIMED GRANITE SETTS
SCALE: 1:15 @ A3



05c DETAIL PLAN OF STAINLESS STEEL CYCLE HOOP INTERFACE WITH RECLAIMED GRANITE SETTS
SCALE: 1:15 @ A3

- RECLAIMED GRANITE SETTS ROUGH - REFER TO DETAIL a & b ACCOMPANYING NOTES FOR FURTHER INFO.
- 10-15mm TUFFGROUT JOINT COLOURED TO MATCH PAVING BY STEINTEC OR EQUAL AND APPROVED
- 750mm HEIGHT (ABOVE GROUND) x 1000mm WIDE x 50mm Ø. SATIN FINISH GRADE 316 SHEFFIELD STAINLESS STEEL CYCLE HOOP BY KENT STAINLESS OR EQUAL AND APPROVED.
- 750mm HEIGHT (ABOVE GROUND) x 1000mm WIDE x 50mm Ø. SATIN FINISH GRADE 316 SHEFFIELD STAINLESS STEEL CYCLE HOOP BY KENT STAINLESS OR EQUAL AND APPROVED. CYCLE STAND CORE DRILL THROUGH PAVING BUILD UP AND FIXED TO PBA DETAIL AND SPECIFICATION.
- 6.5mm THICK ALUMINUM EDGE, KINLEY ALUExcel 120mm OR EQUAL AND APPROVED. SCREED BASE OR APPROPRIATE PACKER MATERIAL TO RAISE AND LEVEL AS REQUIRED AND FIXED TO MANUFACTURES DETAIL AND SPECIFICATION. **NOTE:** DEPTH OF EDGE VARIES DEPENDENT ON LOCATION.
- 30mm DEEP MELCOURT FINE COMPOSTED BARK MULCH OR EQUAL AND APPROVED.
- REROOT FLEXIBLE ROOT BARRIER BY GREENBLUE URBAN OR EQUAL AND APPROVED. REFER TO ALD830_MP001 FOR LAYOUT.
- 300mm DEEP TOPSOIL OVER 300mm DEEP SUBSOIL
- RECLAIMED GRANITE SETTS ROUGH - SOURCED FROM SITE AND / OR APPROVED SOURCE. CONTRACTOR TO CONFIRM MIX AVAILABILITY. 120-250mm LENGTH x 3 BAND WIDTHS x APPROX. 100mm DEPTH. BAND 1- 90-105mm WIDTH; BAND 2 - 105-125mm WIDTH; BAND 3- 125-140mm WIDTH
- 10-15mm TUFFGROUT JOINT COLOURED TO MATCH PAVING BY STEINTEC OR EQUAL AND APPROVED
- 40mm DEPTH TUFFBED BEDDING MORTAR BY STEINTEC OR EQUAL AND APPROVED

LANDSCAPE ARCHITECT:



The Threshing Barn
Bignell Park Barns
Chesterton
Oxfordshire
OX26 1TD

Tel: 01869 249776
Fax: 01869 327513
Email: mail@appliedlandscape.co.uk

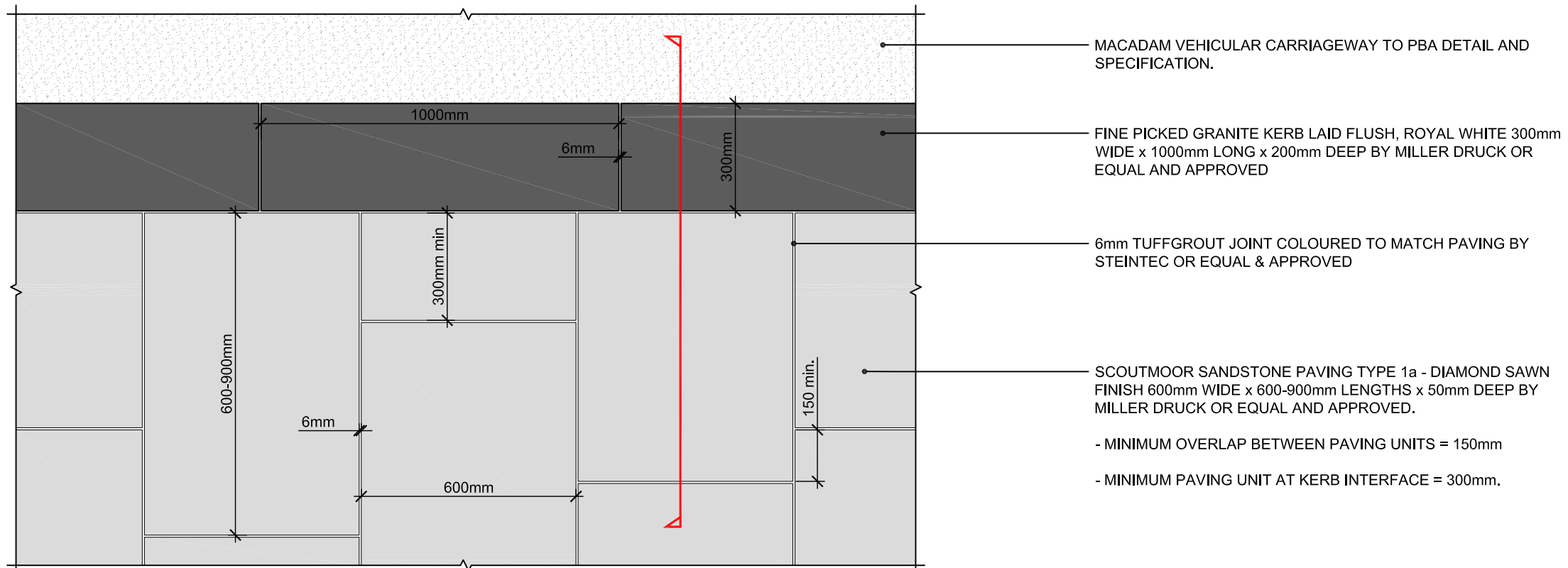
© 2019 Applied Landscape Design Limited. All rights reserved.

Rev.	Update	Date
P03	STAGE 4 ISSUE: EMPLOYERS REQUIREMENTS	22.11.19
P02	INTERFACE DETAIL AMENDED	08.10.19
P01	FIRST ISSUE FOR INFORMATION	27.09.19

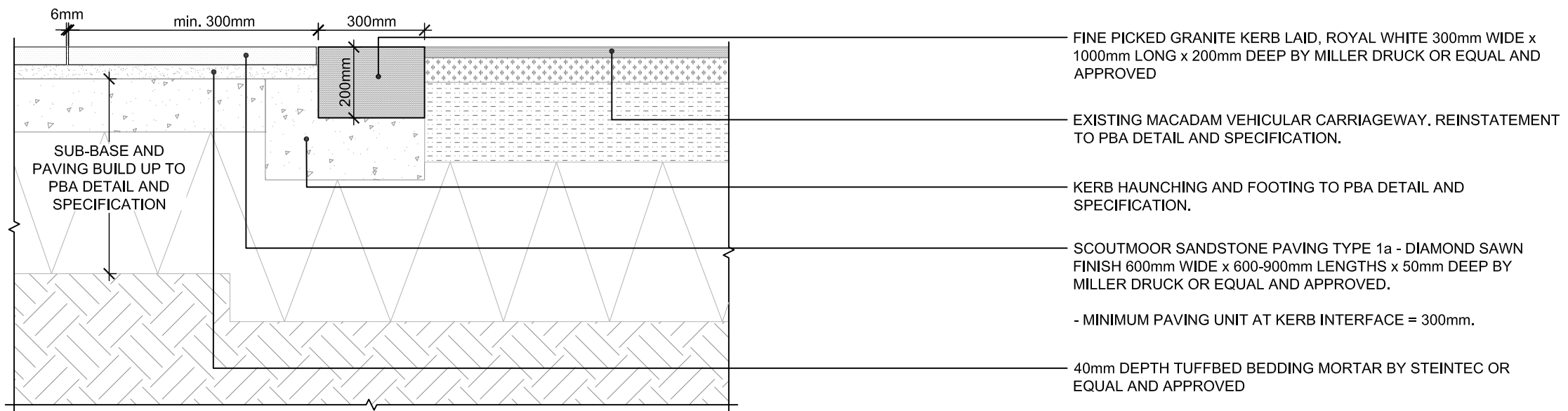
PROJECT:	KXC: BUILDING T2/T3 PUBLIC REALM
CLIENT:	KCCGPL

drawn:	MF	checked:	KmJ
scale:	1:15 @ A3	date:	27.09.2019
status:	INFORMATION	xref file ref:	ALD830_LDbase

DRAWING TITLE:		
HARDWORKS DETAIL - GRANITE SETTS TYPE 2 AND CYCLE STAND INTERFACE		
PROJECT NO.	DRAWING NUMBER:	REVISION:
ALD830	LD705	P03



06a PLAN LAYOUT OF SANDSTONE PAVING TYPE 1a INTERFACE WITH FLUSH KERB
SCALE: 1:15 @ A3



06b SECTION THROUGH SANDSTONE PAVING TYPE 1a INTERFACE WITH FLUSH KERB
SCALE: 1:15 @ A3

LANDSCAPE ARCHITECT:

ALD
The Threshing Barn
Bignell Park Barns
Chesterton
Oxfordshire
OX26 1TD

Tel: 01869 249776
Fax: 01869 327513
Email: mail@appliedlandscape.co.uk

© 2019 Applied Landscape Design Limited. All rights reserved.

Rev.	Update	Date
P02	STAGE 4 ISSUE: EMPLOYERS REQUIREMENTS	22.11.19
P01	FIRST ISSUE FOR INFORMATION	27.09.19

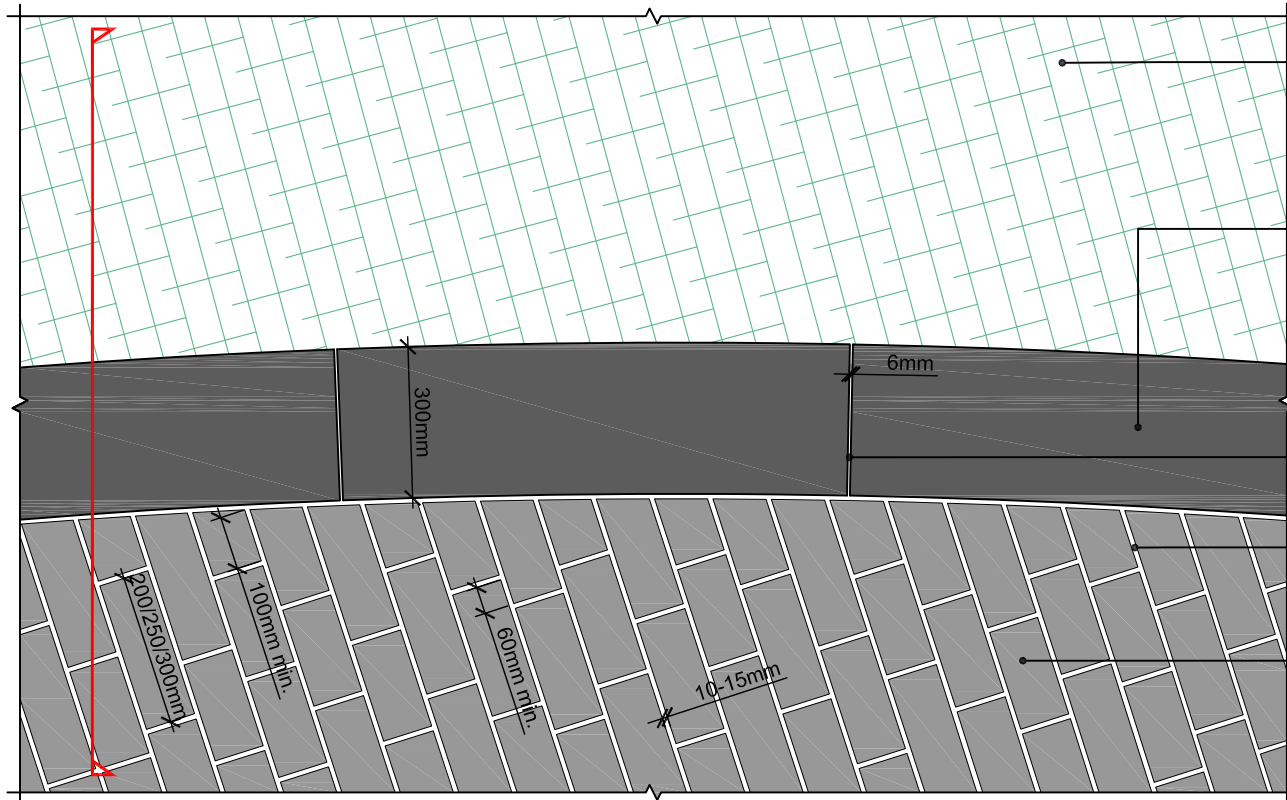
PROJECT:
**KXC: BUILDING T2/T3
PUBLIC REALM**

CLIENT:
KCCGPL

drawn: MF	checked: KmJ
scale: 1:15 @ A3	date: 27.09.2019
status: INFORMATION	xref file ref: ALD830_LDbase

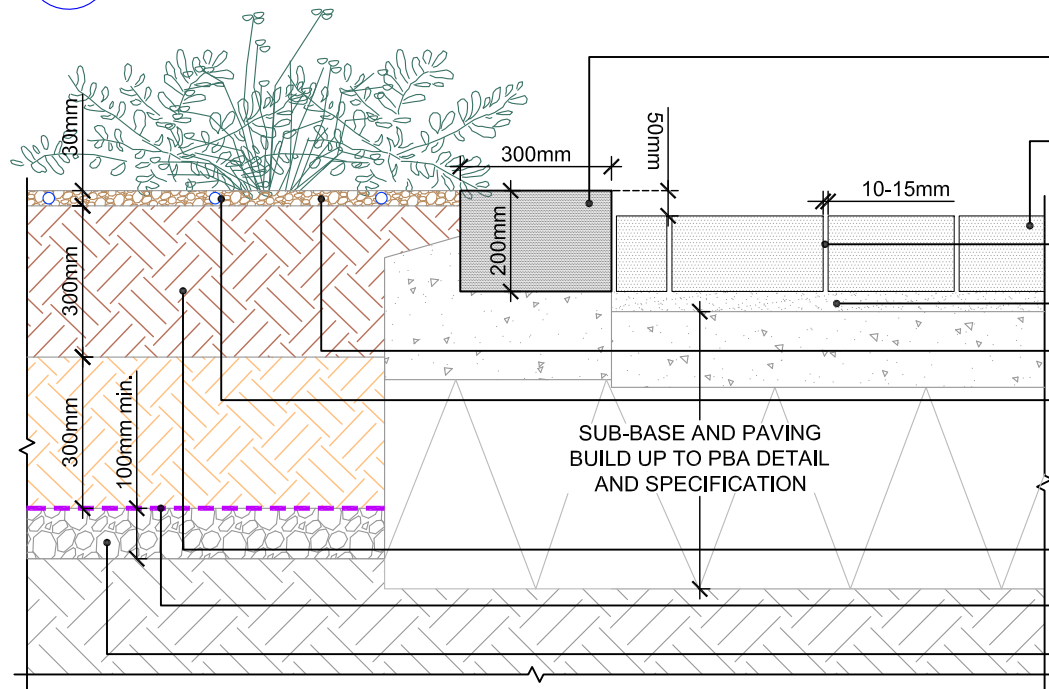
DRAWING TITLE:
**HARDWORKS DETAIL
- SANDSTONE PAVING TYPE 1a
INTERFACE WITH FLUSH KERB**

PROJECT NO.	DRAWING NUMBER:	REVISION:
ALD830	LD706	P02



- PROPOSED PLANTING. TO NIGEL DUNNETT DESIGN AND SPECIFICATION.
- FINE PICKED REDUCE HEIGHT UPSTAND GRANITE KERB, ROYAL WHITE 300mm WIDE x 1000mm LONG x 200mm DEEP BY MILLER DRUCK OR EQUAL AND APPROVED.
- 6mm TUFFGROUT JOINT COLOURED TO MATCH PAVING BY STEINTEC OR EQUAL AND APPROVED.
- 10-15mm TUFFGROUT JOINT COLOURED TO MATCH PAVING BY STEINTEC OR EQUAL AND APPROVED.
- GRANITE SETTS TYPE 1 - FINE PICKED
100mm WIDE x 200/250/300mm LONG x 150mm DEEP. LAID IN RANDOM PATTERN BY MILLER DRUCK OR EQUAL AND APPROVED.
COLOUR MIX : ALBION GREY (30%); MILLENNIUM MAUVE (25%); MILLENNIUM PINK (25%); ELEANOR RED (10%); SMOKEY BLACK (10%).

07a PLAN LAYOUT OF REDUCED HEIGHT UPSTAND KERB INTERFACE WITH GRANITE SETTS
SCALE: 1:15 @ A3



- FINE PICKED REDUCE HEIGHT UPSTAND GRANITE KERB, ROYAL WHITE 300mm WIDE x 1000mm LONG x 200mm DEEP BY MILLER DRUCK OR EQUAL AND APPROVED.
- GRANITE SETTS TYPE 1 - FINE PICKED
100mm WIDE x 200/250/300mm LONG x 150mm DEEP. LAID IN RANDOM PATTERN BY MILLER DRUCK OR EQUAL AND APPROVED.
COLOUR MIX : ALBION GREY (30%); MILLENNIUM MAUVE (25%); MILLENNIUM PINK (25%); ELEANOR RED (10%); SMOKEY BLACK (10%).
- 10-15mm TUFFGROUT JOINT COLOURED TO MATCH PAVING BY STEINTEC OR EQUAL AND APPROVED.
- 40mm DEPTH TUFFBED BEDDING MORTAR BY STEINTEC OR EQUAL AND APPROVED.
- 30mm DEEP MELCOURT FINE COMPOSTED BARK MULCH OR EQUAL AND APPROVED.
- IRRIGATION DRIPLINES TO WATERSCAPES DETAIL AND SPECIFICATION.
- SUB-BASE AND PAVING BUILD UP TO PBA DETAIL AND SPECIFICATION
- 300mm DEEP TOPSOIL OVER 300mm DEEP SUBSOIL.
- GEOTEXTILE SEPARATION LAYER TO PBA DETAIL AND SPECIFICATION.
- 100mm min. GRAVEL DRAINAGE LAYER TO SAME SPECIFICATION AS TREE PIT DRAINAGE GRAVEL.

07b SECTION THROUGH REDUCED HEIGHT UPSTAND KERB INTERFACE WITH GRANITE SETTS
SCALE: 1:15 @ A3

LANDSCAPE ARCHITECT:



The Threshing Barn
Bignell Park Barns
Chesterton
Oxfordshire
OX26 1TD

Tel: 01869 249776
Fax: 01869 327513
Email: mail@appliedlandscape.co.uk

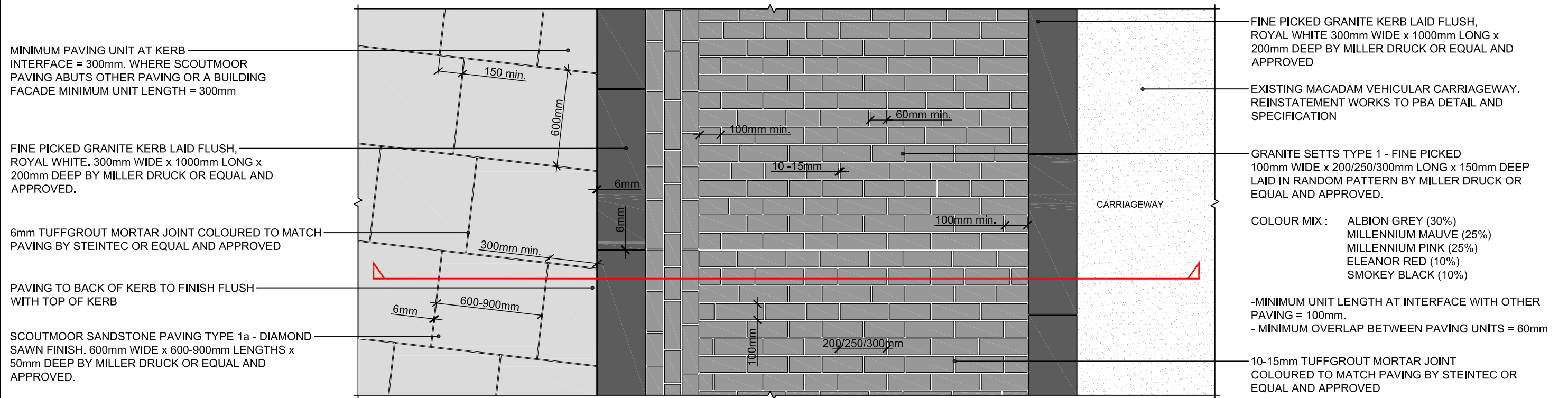
© 2019 Applied Landscape Design Limited. All rights reserved.

Rev.	Update	Date
P02	STAGE 4 ISSUE: EMPLOYERS REQUIREMENTS	22.11.19
P01	FIRST ISSUE FOR INFORMATION	27.09.19

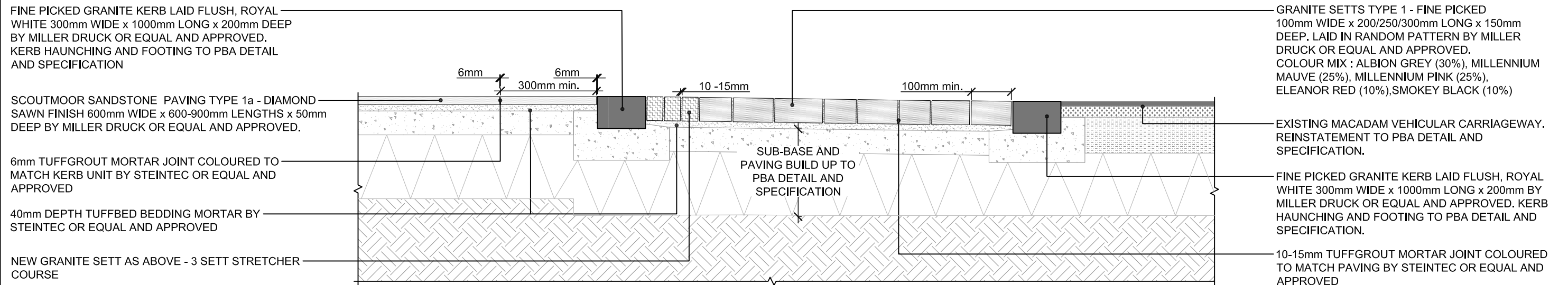
PROJECT:	KXC: BUILDING T2/T3 PUBLIC REALM
CLIENT:	KCCGPL

drawn:	MF	checked:	KmJ
scale:	1:15 @ A3	date:	27.09.2019
status:	INFORMATION	xref file ref:	ALD830_LDbase

DRAWING TITLE: HARDWORKS DETAIL - KERB INTERFACE WITH SOFT LANDSCAPE		
PROJECT NO. ALD830	DRAWING NUMBER: LD707	REVISION: P02



08a PLAN LAYOUT OF PROPOSED DISABLED PARKING BAY
SCALE: 1:25 @ A3



08b SECTION THROUGH PROPOSED DISABLED PARKING BAY
SCALE: 1:25 @ A3

LANDSCAPE ARCHITECT:



The Threshing Barn
Bignell Park Barns
Chesterton
Oxfordshire
OX26 1TD

Tel: 01869 249776
Fax: 01869 327513
Email: mail@appliedlandscape.co.uk

© 2019 Applied Landscape Design Limited. All rights reserved.

Rev.	Update	Date
P02	STAGE 4 ISSUE: EMPLOYERS REQUIREMENTS	22.11.19
P01	FIRST ISSUE FOR INFORMATION	27.09.19

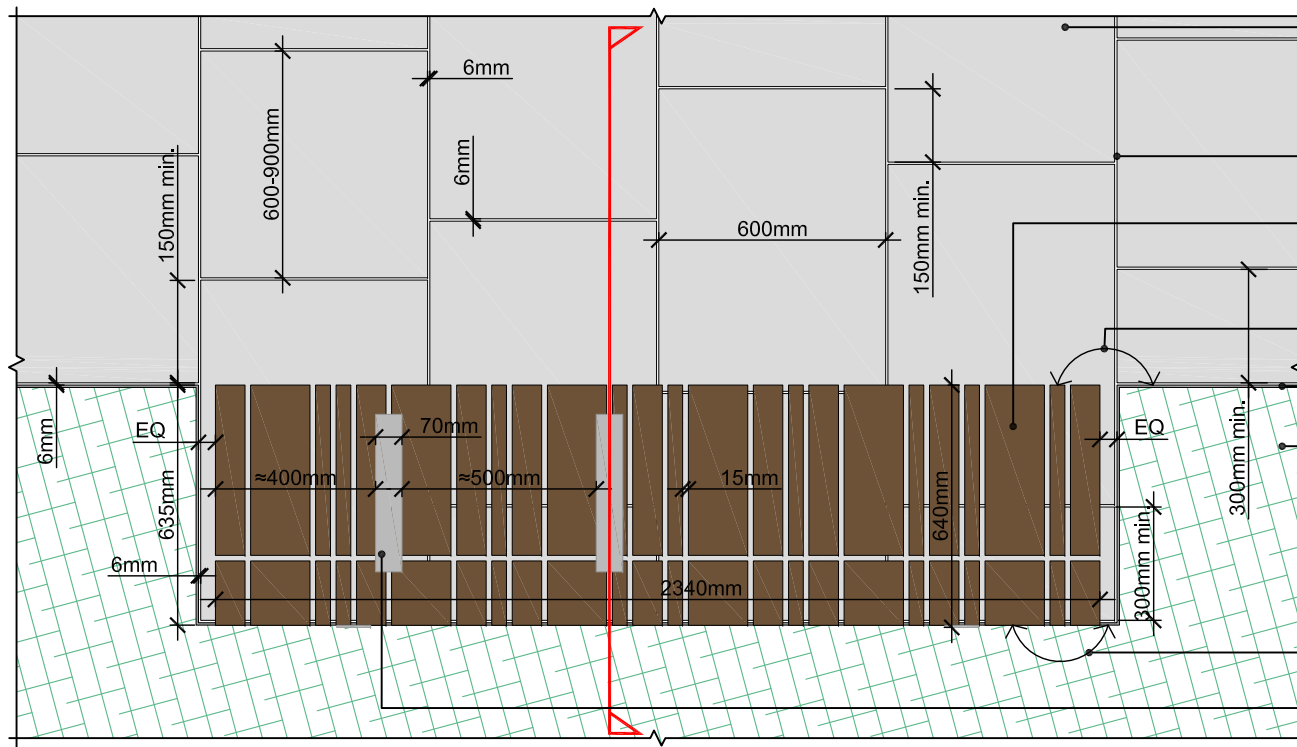
PROJECT:
**KXC: BUILDING T2/T3
PUBLIC REALM**

CLIENT:
KCCGPL

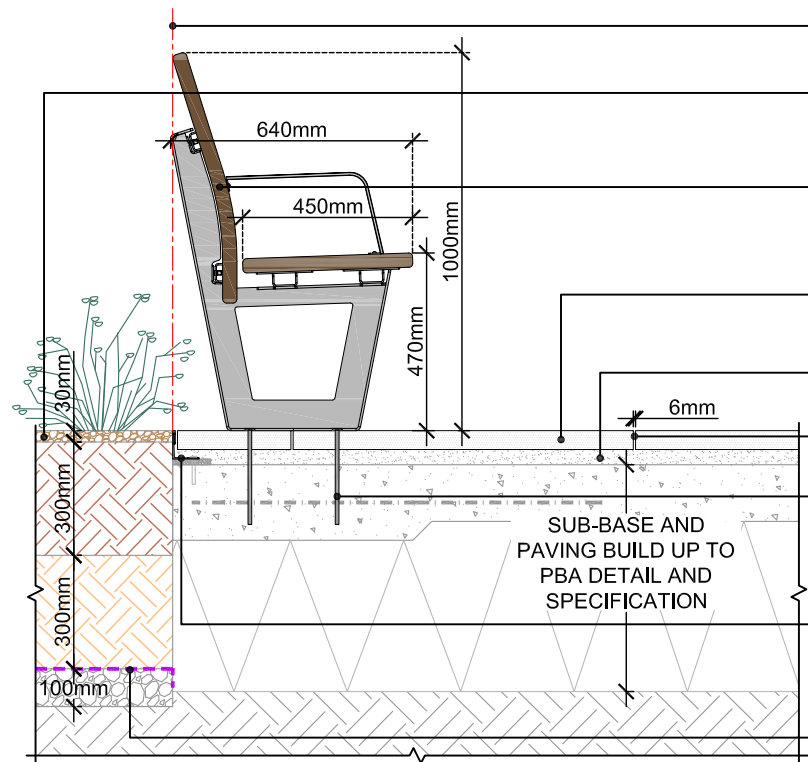
drawn: MF	checked: KmJ
scale: 1:25 @ A3	date: 27.09.2019
status: INFORMATION	xref file ref: ALD830_LDbase

DRAWING TITLE:
**HARDWORKS DETAIL
- DISABLED BAY EAST OF
BLOCK N2**

PROJECT NO. ALD830	DRAWING NUMBER: LD708	REVISION: P02
------------------------------	---------------------------------	-------------------------



15a PLAN LAYOUT OF HIGHLIFE III TIMBER BENCH
 SCALE: 1:20 @ A3



15b SECTION THROUGH HIGHLIFE III TIMBER BENCH
 SCALE: 1:20 @ A3

LANDSCAPE ARCHITECT:



The Threshing Barn
 Bignell Park Barns
 Chesterton
 Oxfordshire
 OX26 1TD

Tel: 01869 249776
 Fax: 01869 327513
 Email: mail@appliedlandscape.co.uk

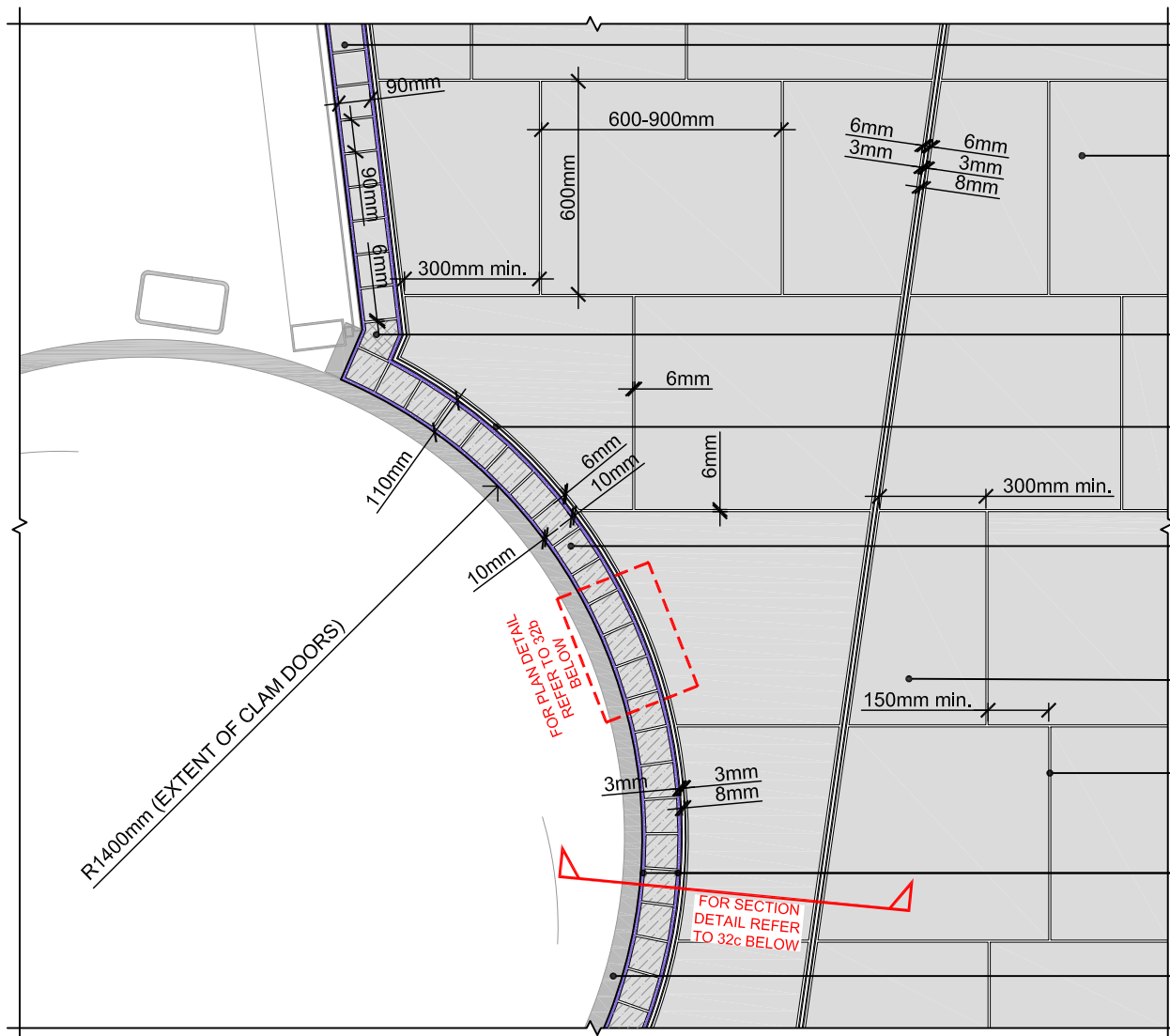
© 2019 Applied Landscape Design Limited. All rights reserved.

Rev.	Update	Date
P02	STAGE 4 ISSUE: EMPLOYERS REQUIREMENTS	22.11.19
P01	FIRST ISSUE FOR INFORMATION	27.09.19

PROJECT:	KXC: BUILDING T2/T3 PUBLIC REALM
CLIENT:	KCCGPL

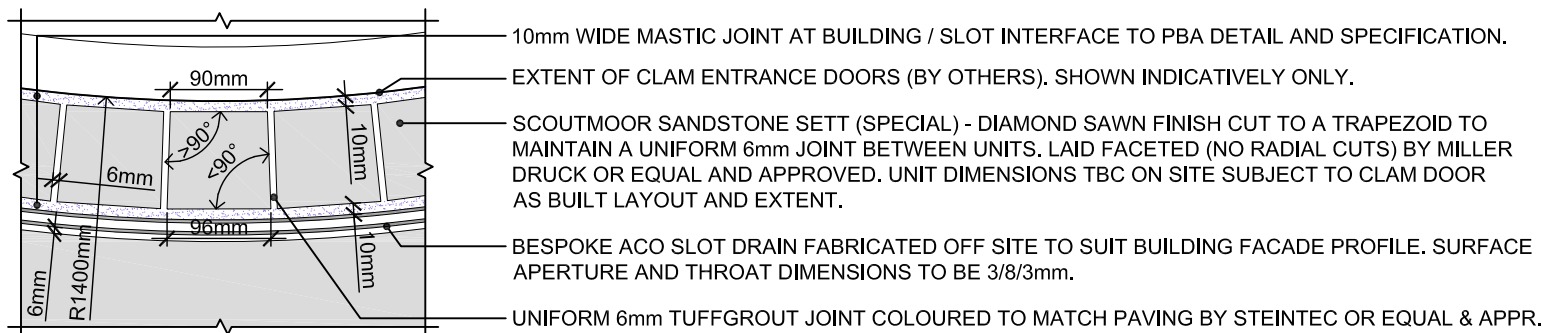
drawn:	MF	checked:	KmJ
scale:	1:20 @ A3	date:	27.09.2019
status:	INFORMATION	xref file ref:	ALD830_LDbase

DRAWING TITLE: HARDWORKS DETAIL - HARDWOOD TIMBER BENCH		
PROJECT NO. ALD830	DRAWING NUMBER: LD715	REVISION: P02

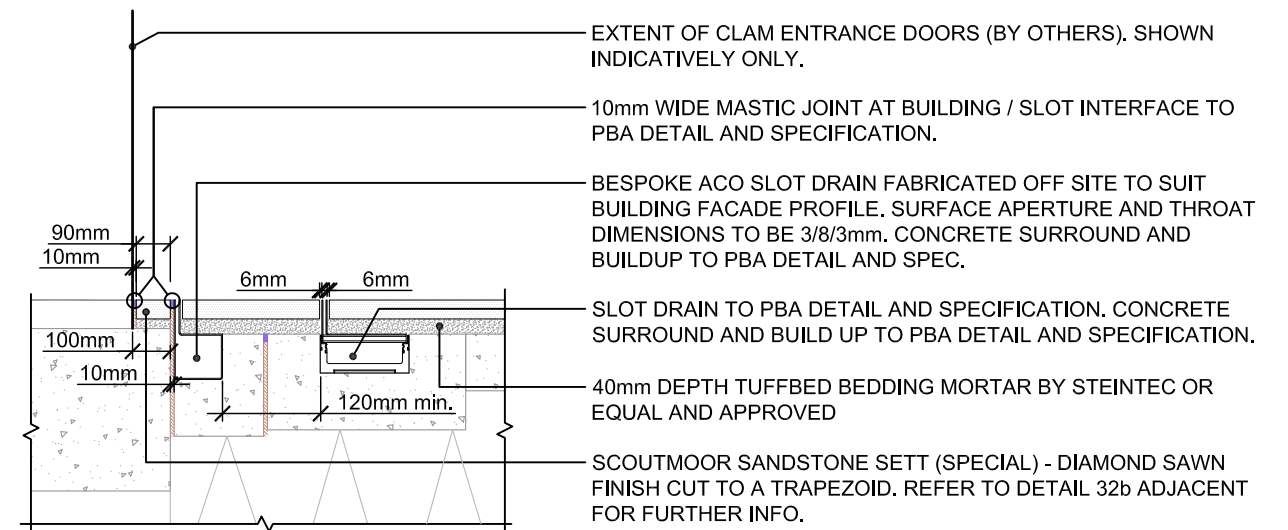


- SCOUTMOOR SANDSTONE SETT - DIAMOND SAWN FINISH 90mm WIDE x 90mm LENGTH x 50mm DEEP BY MILLER DRUCK OR EQUAL AND APPROVED.
- SCOUTMOOR SANDSTONE PAVING TYPE 1a - DIAMOND SAWN FINISH 600mm WIDE x 600-900mm LENGTHS x 50mm DEEP BY MILLER DRUCK OR EQUAL AND APPROVED.
- MINIMUM OVERLAP BETWEEN PAVING UNITS = 150mm
- WHERE SANDSTONE ABUTS OTHER PAVING, THE BUILDING FACADE OR SLOT DRAIN, MINIMUM UNIT LENGTH = 300mm
- OVERSIZED SETT UNIT CUT TO SUIT ON SITE.
- BESPOKE ACO SLOT DRAIN FABRICATED OFF SITE TO SUIT BUILDING FACADE PROFILE. SURFACE APERTURE AND THROAT DIMENSIONS TO BE 3/8/3mm TO MATCH PROPOSED SLOT WITHIN PUBLIC REALM FINISHES.
- SCOUTMOOR SANDSTONE SETT (SPECIAL) - DIAMOND SAWN FINISH CUT TO A TRAPEZOID TO MAINTAIN A UNIFORM 6mm JOINT BETWEEN UNITS. LAID FACETED (NO RADIAL CUTS) BY MILLER DRUCK OR EQUAL AND APPROVED. REFER TO DETAIL 32b BELOW FOR FURTHER INFO.
- SLOT DRAIN TO PBA DETAIL AND SPECIFICATION. VISIBLE AT PAVING SURFACE WITH 8mm WIDE STAINLESS STEEL THROAT.
- 6mm TUFFGROUT JOINT COLOURED TO MATCH PAVING BY STEINTEC OR EQUAL & APPROVED.
- 10mm WIDE MASTIC JOINT AT BUILDING / SLOT INTERFACE TO PBA DETAIL AND SPECIFICATION.
- CLAM ENTRANCE DOORS AND BUILDING FACADE BY OTHERS. SHOWN INDICATIVELY ONLY.

32a DETAIL PLAN OF SANDSTONE PAVING INTERFACE WITH CLAM ENTRANCE DOORS
SCALE: 1:20 @ A3



32b PLAN DETAIL OF SPECIAL SETT UNITS AT INTERFACE WITH CLAM ENTRANCE DOORS
SCALE: NTS @ A3



32c SECTION DETAIL THROUGH DOOR THRESHOLD, SETT STRETCHER COURSE AND SLOT DRAINS
SCALE: 1:20 @ A3

LANDSCAPE ARCHITECT:



The Threshing Barn
Bignell Park Barns
Chesterton
Oxfordshire
OX26 1TD

Tel: 01869 249776
Fax: 01869 327513
Email: mail@appliedlandscape.co.uk

© 2019 Applied Landscape Design Limited. All rights reserved.

Rev.	Update	Date
P03	STAGE 4 ISSUE: EMPLOYERS REQUIREMENTS	22.11.19
P02	NOTES & SLOT AMENDED AS CLOUDED	08.10.19
P01	FIRST ISSUE FOR INFORMATION	27.09.19

PROJECT:
**KXC: BUILDING T2/T3
PUBLIC REALM**

CLIENT:
KCCGPL

drawn: MF	checked: KmJ
scale: 1:20 @ A3	date: 27.09.2019
status: INFORMATION	xref file ref: ALD830_LDbase

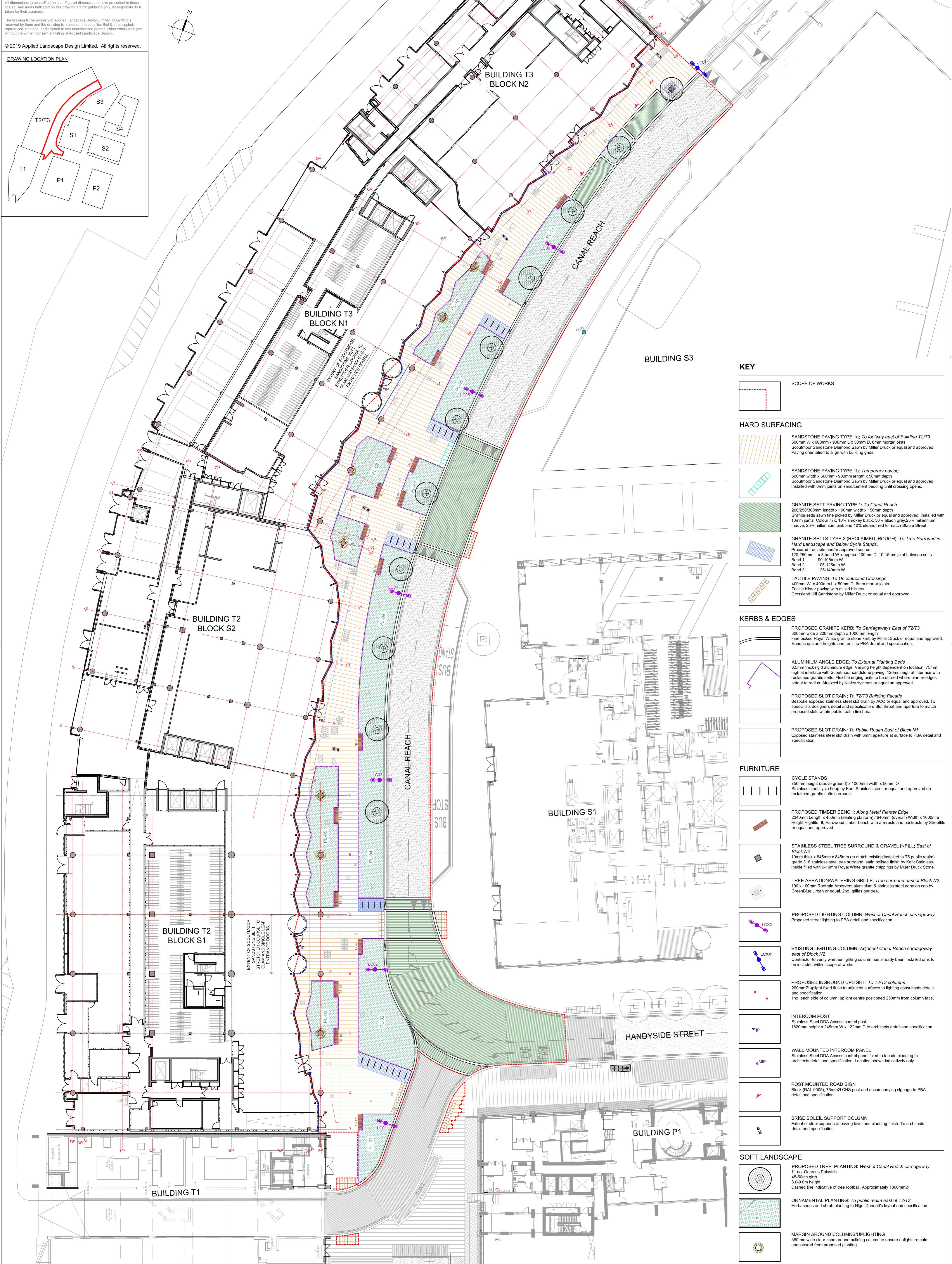
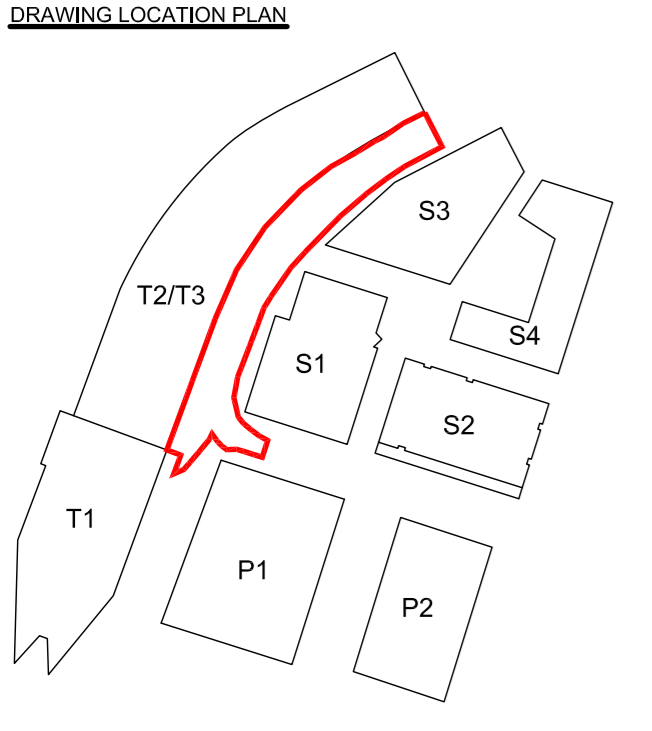
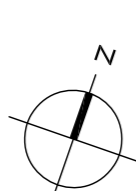
DRAWING TITLE:
**BUILDING T2/T3 PUBLIC REALM
INTERFACE DETAIL
- SHEET 2 OF 2**

PROJECT NO. ALD830	DRAWING NUMBER: LD732	REVISION: P03
------------------------------	---------------------------------	-------------------------

All dimensions to be verified on site. Figured dimensions to take precedence to those scaled. Any areas indicated on this drawing are for guidance only, no responsibility is taken for their accuracy.

The drawing is the property of Applied Landscape Design Limited. Copyright is reserved by them and the drawing is issued on the condition that it is not copied, reproduced, retained, or disclosed to any unauthorised person, either wholly or in part without the written consent in writing of Applied Landscape Design.

© 2019 Applied Landscape Design Limited. All rights reserved.



- KEY**
- SCOPE OF WORKS
- HARD SURFACING**
- SANDSTONE PAVING TYPE 1a:** To footway east of Building T2/T3
600mm W x 600mm - 900mm L x 50mm D, 6mm mortar joints
Scoutmoor Sandstone Diamond Sawn by Miller Druck or equal and approved.
Paving orientation to align with building grids.
 - SANDSTONE PAVING TYPE 1b:** Temporary paving
600mm width x 600mm - 900mm length x 50mm depth
Scoutmoor Sandstone Diamond Sawn by Miller Druck or equal and approved.
Installed with 6mm joints on sand/cement bedding until crossing opens.
 - GRANITE SETT PAVING TYPE 1:** To Canal Reach
200/250/300mm length x 100mm width x 150mm depth
Granite setts sawn fine picked by Miller Druck or equal and approved. Installed with 10mm joints. Colour mix: 10% smokey black, 30% alabon grey, 25% millennium mauve, 25% millennium pink and 10% eleonor red to match Stable Street.
 - GRANITE SETTS TYPE 2 (RECLAIMED, ROUGH):** To Tree Surround in Hard Landscape and Below Cycle Stands.
Procured from site and/or approved source.
120-250mm L x 3 band W x approx. 100mm D, 10-15mm joint between setts
Band 1 90-125mm W
Band 2 105-125mm W
Band 3 125-140mm W
 - TACTILE PAVING:** To Uncontrolled Crossings
400mm W x 400mm L x 50mm D, 6mm mortar joints
Tactile blister paving with milled blisters.
Crossland Hill Sandstone by Miller Druck or equal and approved.
- KERBS & EDGES**
- PROPOSED GRANITE KERB:** To Carriageways East of T2/T3
300mm wide x 200mm depth x 100mm length
Fine picked Royal White granite stone kerb by Miller Druck or equal and approved.
Various upstand heights and radii, to PBA detail and specification.
 - ALUMINIUM ANGLE EDGE:** To External Planting Beds
6.5mm thick rigid aluminium edge. Varying height dependent on location; 75mm high at interface with Scoutmoor sandstone paving; 120mm high at interface with reclaimed granite setts. Flexible edging units to be utilised where planter edges setout to radius. Aluxcol by Kinley systems or equal approved.
 - PROPOSED SLOT DRAIN:** To T2/T3 Building Facade
Bespoke exposed stainless steel slot drain by ACC or equal and approved. To specialists designers detail and specification. Slot throat and aperture to match proposed slots within public realm finishes.
 - PROPOSED SLOT DRAIN:** To Public Realm East of Block N1
Exposed stainless steel slot drain with 6mm aperture at surface to PBA detail and specification.
- FURNITURE**
- CYCLE STANDS**
750mm height (above ground) x 1000mm width x 50mm Ø
Stainless steel cycle hoop by Kent Stainless steel or equal and approved on reclaimed granite setts surround.
 - PROPOSED TIMBER BENCH:** Along Metal Planter Edge
2340mm Length x 450mm (seating platform) / 640mm (overall) Width x 100mm Height
Height: HighLife III, Hardwood timber bench with armrests and backrests by Streetlife or equal and approved
 - STAINLESS STEEL TREE SURROUND & GRAVEL INFILL:** East of Block N2
10mm thick x 845mm x 845mm (to match existing installed to T5 public realm) grade 316 stainless steel tree surround, satin polished finish by Kent Stainless. Inside filled with 6-10mm Royal White granite chippings by Miller Druck Stone.
 - TREE AERATION/WATERING GRILLE:** Tree surround east of Block N2
100 x 100mm Roodrain Arbovent aluminium & stainless steel aeration cap by GreenBlue Urban or equal. 2no. grilles per tree.
 - PROPOSED LIGHTING COLUMN:** West of Canal Reach carriageway
Proposed street lighting to PBA detail and specification
 - EXISTING LIGHTING COLUMN:** Adjacent Canal Reach carriageway east of Block N2
Contractor to verify whether lighting column has already been installed or is to be included within scope of works.
 - PROPOSED INGROUND UPLIGHT:** To T2/T3 columns
200mmØ uplight fixed flush to adjacent surfaces to lighting consultants details and specification.
1no. each side of column; uplight centre positioned 250mm from column face.
 - INTERCOM POST**
Stainless Steel DDA Access control post.
1820mm height x 245mm W x 122mm D to architects detail and specification.
 - WALL MOUNTED INTERCOM PANEL**
Stainless Steel DDA Access control panel fixed to facade cladding to architects detail and specification. Location shown indicatively only.
 - POST MOUNTED ROAD SIGN**
Black (RAL 9005), 76mmØ CHS post and accompanying signage to PBA detail and specification.
 - BRISE SOLEIL SUPPORT COLUMN**
Extent of steel supports at paving level and cladding finish. To architects detail and specification.
- SOFT LANDSCAPE**
- PROPOSED TREE PLANTING:** West of Canal Reach carriageway
11 no. Quercus Palustris
45-50cm girth
8-9.0m height
Dashed line indicative of tree rootball. Approximately 1300mmØ
 - ORNAMENTAL PLANTING:** To public realm east of T2/T3
Herbaceous and shrub planting to Nigel Dunnett's layout and specification.
 - MARGIN AROUND COLUMNS/UPLIGHTING**
350mm wide clear zone around building column to ensure uplights remain unobscured from proposed planting.

LANDSCAPE ARCHITECT:

The Threshing Barn
Bignell Park Barns
Chesterston
Oxfordshire
OX26 1TD

Tel: 01869 249776
Fax: 01869 327513
Email: mail@appliedlandscape.co.uk

Rev.	Update	Date
P01	ISSUE FOR PLANNING	16.12.19

PROJECT: T2/T3 Public Realm, KXC

CLIENT: KING'S CROSS CENTRAL GENERAL PARTNERS LTD (KCCGLP)

drawn: MF
scale: 1:250 @ A1
status: INFORMATION

checked: KmJ
date: 16.12.2019
xref file ref: ALD30_MPbase

DRAWING TITLE: BUILDING T2/T3 PUBLIC REALM GA (PLANNING)

PROJECT NO.	DRAWING NUMBER:	REVISION:
ALD830	MP010	P01

ORIGINAL A1 SIZE SHEET