

- This Drawing to be read in conjunction with all other Engineers, Architects and Specialists drawings and specifications.
- No dimensions are to be scaled from this drawing.
- No deviation may be made from the details shown on this drawing without prior agreement of the Engineers.
- Any discrepancy between this drawing and any other document should be referred immediately to the Engineer.

GENERAL NOTES

STEELWORK

All steelwork to be designed in accordance with BS 5950 part 1, 2000 unless stated otherwise, all steel shall be to BS EN 10025, Grade S275.

All steelwork is to be shot blasted to SA 2.5 and painted with Epoxy Zinc Phosphate primer to DFT 100 microns

The sub-grade shall be in accordance with tables 4, 5 and 6 BS 5950 (K1 unless noted otherwise) for external and/or internal use, to suit the plate thickness provided. A proprietary type with characteristic yield strength of 350 N/mm<sup>2</sup> and minimum ultimate tensile strength of 450 N/mm<sup>2</sup> 95mm high after welding x 19mm diameter.

Fixings

All bolts shall be grade 8.8.

All welds shall be 8mm fillet, except where specified otherwise.

All welds are to be full profile and continuous. All end plates/capping plates are to be F.S.B.W. to RHS/CHS with plate edges prepared.

All end plates/capping plates to be profiled to shape of section.

All end plates to be a laminar-free material.

FIRE PROTECTION

All structural steelwork requires a minimum protection period of 1 hour fire protection.

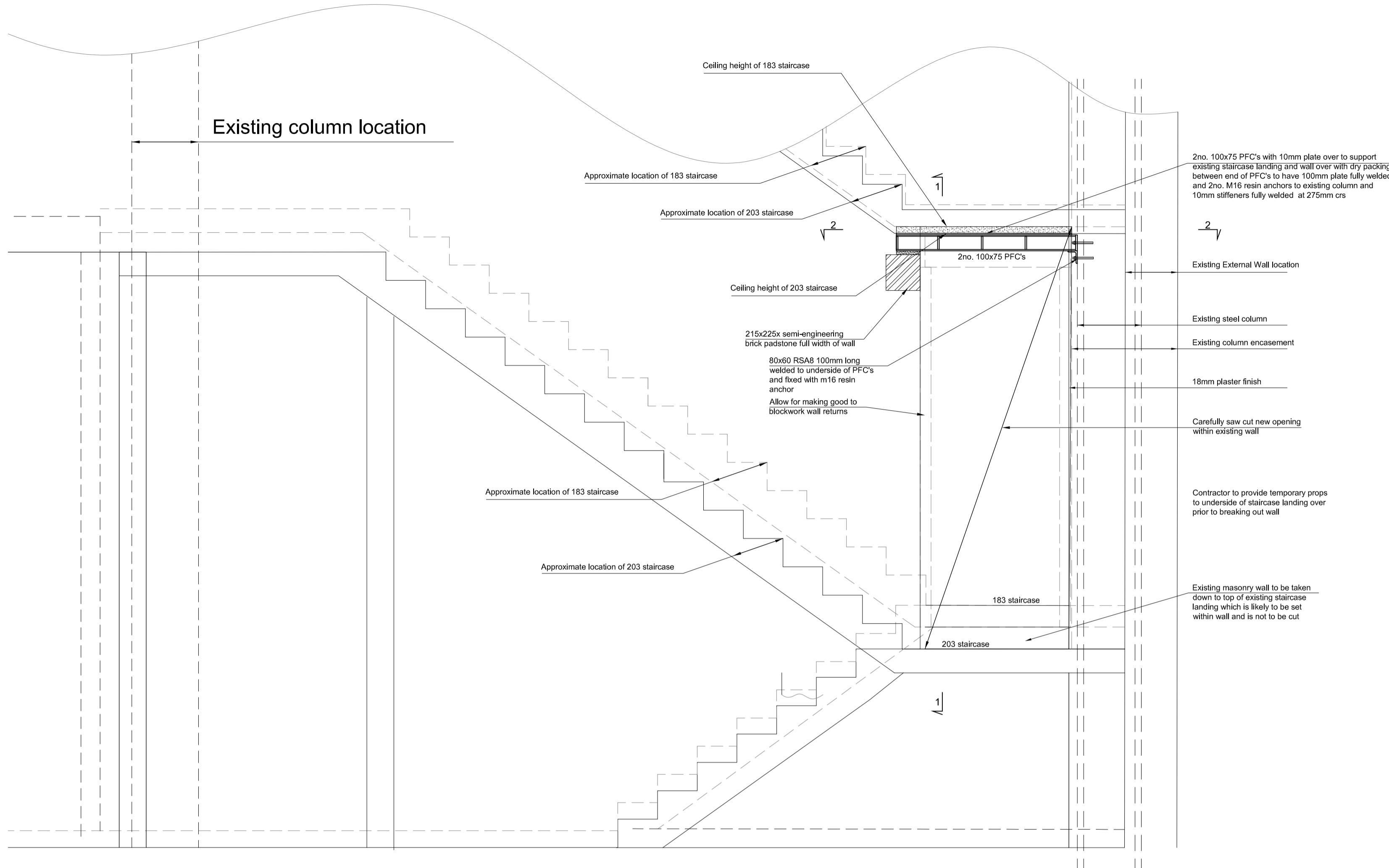
Unless specifically identified the choice of fire protection material is M61 intumescent coatings for the protection of steelwork. M63 board fire protection

PADSTONE

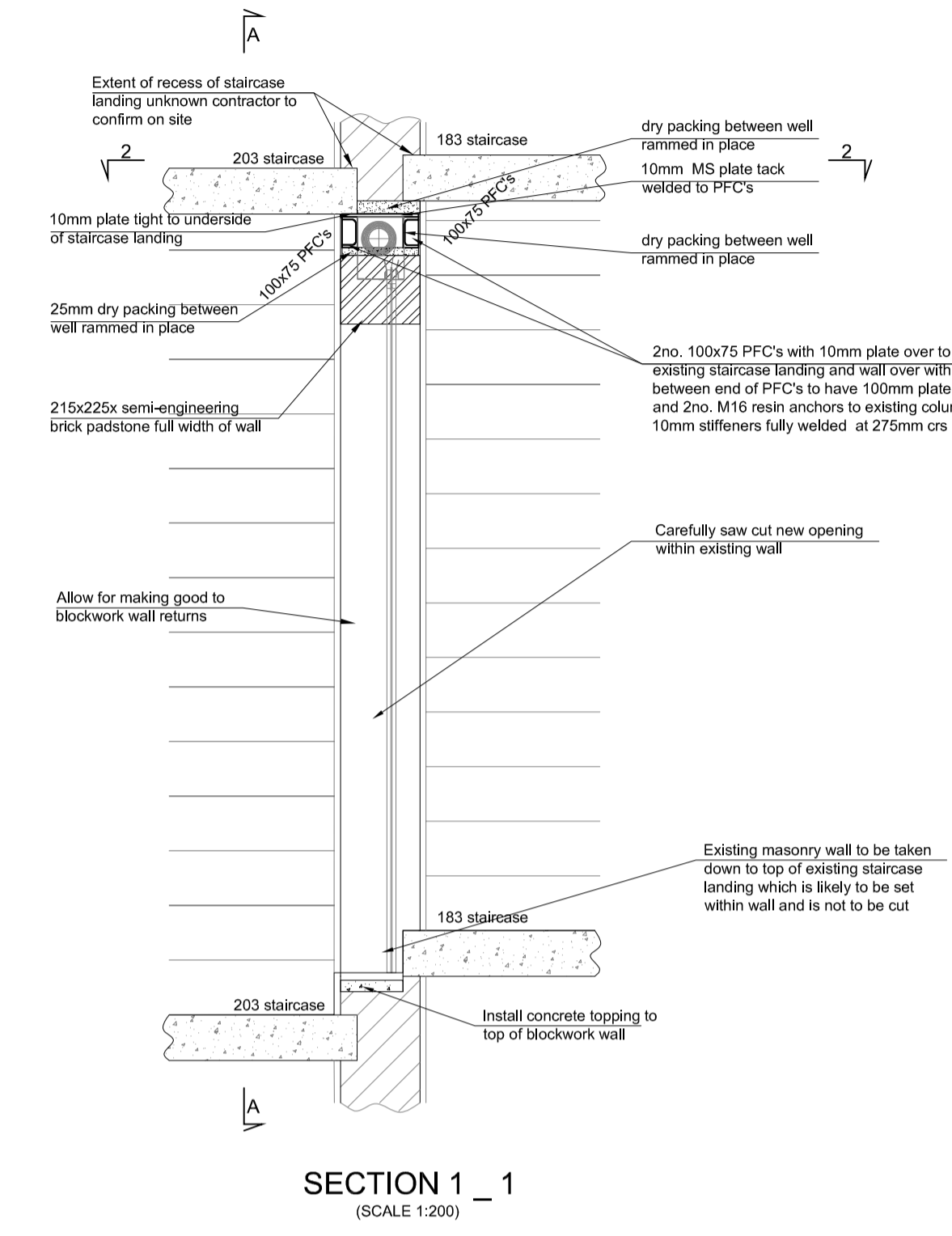
Engineering brickwork. 50N/mm<sup>2</sup>

Load bearing blockwork. 7N/mm<sup>2</sup>

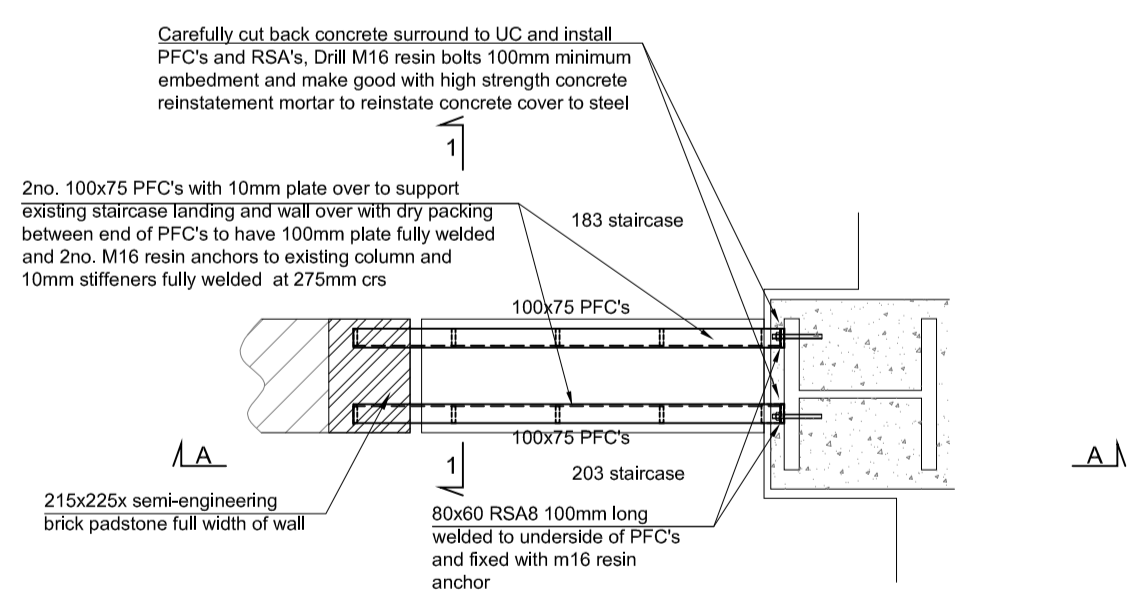
Mortars shall be as follows 1:3 (cement: sand)



ELEVATION A\_A ON NEW OPENING FROM No. 203 SIDE  
(SCALE 1:200)



SECTION 1\_1  
(SCALE 1:200)



SECTION 2\_2  
(SCALE 1:200)

T1	TENDER ISSUE	GB	16.12.19
Ref.	Revisions	By	Date

183 & 203 EVERSOLT STREET CAMDEN, LONDON, NW1 1BU

183 - 203 ADJOINING REAR FIRE ESCAPE STAIRCASES NEW OPENING STRUCTURAL DETAILS

**simpson | tws**  
3 Dufferin Avenue  
London EC1Y 8PQ  
T.0207 253 2626  
www.simpsoneng.com

Scale at A1	Date	Drawn By
1:20	14/14/19	GB
Project No.	Dwg No.	Rev.
9222.3	51	T1