

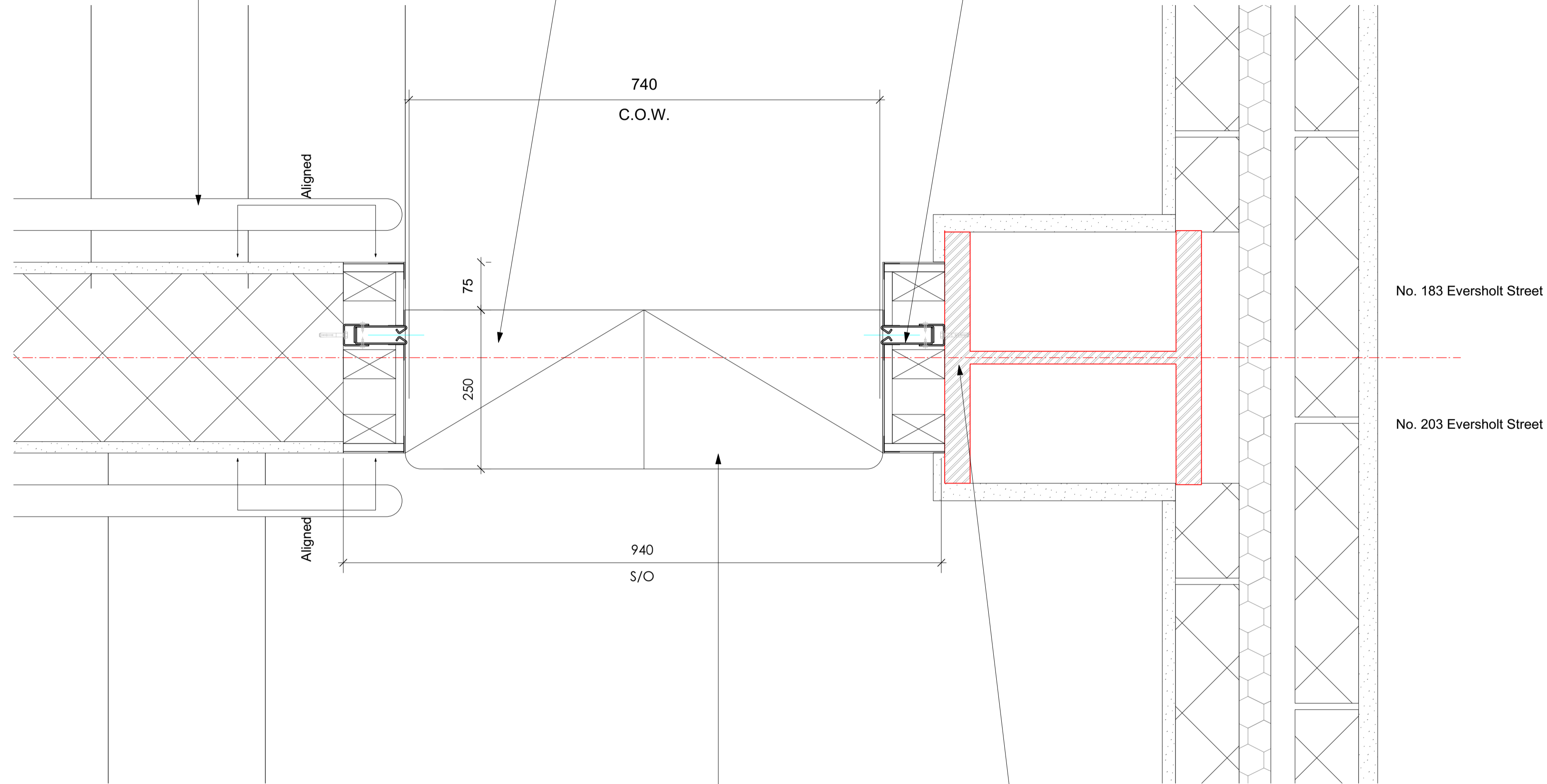
PLANNING

Steel handrail to finish at new opening on both sides as shown

Step formed in concrete to allow for change in level between 183 & 203 Eversholt St. Refer to S.E. drawing for details. New bullnose timber tread to step. Any damaged sections of stair core flooring arising from works to be replaced to match existing.

Coopers Firemaster Plus 2 Fire curtain guide rails to be concealed within plasterboard boxing as shown

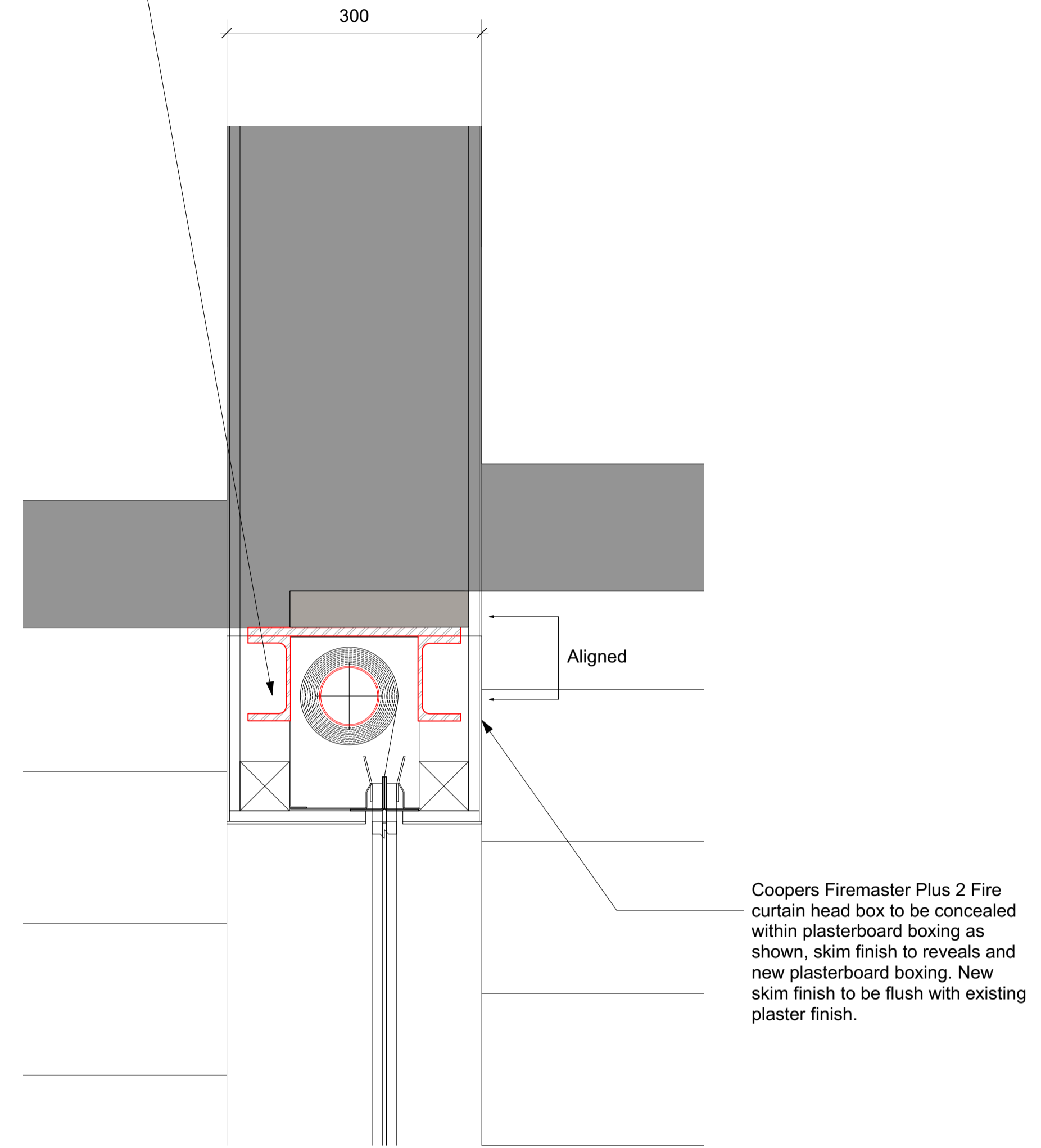
Refer to engineer's drawings and spec for details of lintels



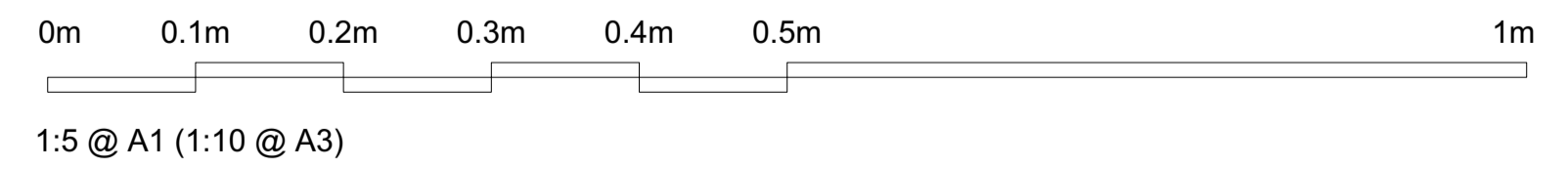
01 Proposed Fire Curtain Detail - Plan
Scale: 1:5

250mm timber bullnose tread

Coopers Firemaster Plus 2 Fire curtain guide rails bolted back to existing steel column/ concrete blockwork. Refer to manufacturer's instructions & SE drawings for fixing details



02 Proposed Fire Curtain Detail - Headbox Section
Scale: 1:5



NOTES:-
- All dimensions to be checked on site prior to commencement of any works, and/or preparation of any shop drawings.
- Sizes of and dimensions to any structural or services elements are indicative only. See structural and service engineers drawings for actual sizes / dimensions.
- This drawing to be read in conjunction with all other Architect's drawings, specifications and other Consultants' information.
- All proprietary systems shown on this drawing are to be installed strictly in accordance with the Manufacturers/Suppliers recommended details.
- Any discrepancies between information shown on this drawing and any other contract information or manufacturers/suppliers recommendations is to be brought to the attention of the Architect.

Revision	Date	Amendment
PL1	17/12/19	Issued for planning

Date	October 2019	Project	183-203 Eversholt Street	Job Ref.	332 EVR
Scale	1:5 @A1	Drawn	CN	Check	MH
Status	PLANNING	Client Ref	Drwg. no. 322(ID)401	Rev.	PL1
Hale Brown Architects Ltd. Studio 1.04 Edinburgh House, Lambeth, London, SE11 5DP T: 020 3735 7442 E: mail@halebrown.com W: www.halebrown.com					