

LABS, Victoria House, Camden

Design & Access Statement

December 2019



L A B S

HUTCHINSON & PARTNERS

Document Control:

Revision	Date	Notes	Initial
-	12.2019	Issued for information	WP/JB

Contents

01.00 Introduction	04
02.00 Setting	08
03.00 Heritage Statement	19
04.00 Design Response	30
05.00 Appearance	55
06.00 Access Statement	58
07.00 Conclusion	61

01.00

Introduction

01.01 Overview	05
01.02 LABS: An Introduction	06
01.03 Hutchinson and Partners: An Introduction	07

01.01 Overview



Image of the Current Site from Bloomsbury Square

This Design and Access Statement has been prepared by Hutchinson and Partners (the Architect) on behalf of LABS (the Applicant), in order to describe the design for the installation of flexible partitions to the 1st to 9th floors of their property, Victoria House at Bloomsbury Square, Camden, WC1B 4DA. The applicant (LABS) is submitting a

Listed Building Consent application for the 1st to 9th floors of the Grade II listed Victoria House at Bloomsbury Square, Camden. The application for this proposal is accompanied by a set of application drawings and this document, the Design and Access Statement which includes a Heritage Statement. The Design and Access Statement (DAS) should



Image of the Existing Building from Bloomsbury Square

be read in conjunction with the other Planning Document and drawings submitted as part of this application. The DAS describes the proposal, and includes the existing floors, the development context, the layout, use, size and scale of the proposals. The refurbishment is to retain the offices (Class B1), and to refurbish to allow LABS to run co-working office

floors, whilst sensitively considering the heritage assets of the site. The design approach to the offices will seek to provide a comfortable, well-considered working environment within the unique historic setting of the Grade II Listed Victoria House. The proposal will aim to compliment and enhance the historic fabric with low impact construction and high-quality materials.

01.02 LABS: An Introduction



Southampton Place, Camden



LABS Triangle, Camden



LABS Lockside, Camden



LABS House, Camden



Hogarth House, Camden



Hawley Wharf, Camden



LABS Avenue, Camden



LABS Atrium, Camden

LABS are currently responsible for running a number of co-working spaces across the London Borough of Camden, within existing listed buildings in Camden Market, High Holborn and Southampton Place, and within new builds in Hawley Wharf. These spaces offer a creative place for freelancers and small companies to work, meet clients and

collaborate, alongside offering organised collaborative events for networking, socialised and keeping fit. Due to the positive reception of their co-working spaces, LABS are excited to provide this new space within Victoria House.

01.03 Hutchinson and Partners: An Introduction



Brady Square and Albion Walk, Whitechapel Square



Hendon Waterside, Residential Buildings



101 Camley Street, Camden



90 High Holborn, Camden



Colindale Gardens, Colindale



101 Camley Street, Marketing Suite



Camley Street, Camden



90 High Holborn, Camden

Hutchinson & Partners is formed of a collection of like-minded architects dedicated to creating places and architecture of enduring quality. We work across all sectors and scales employing passion, free-thinking, rigor and process in our responses to brief, context, sustainability and legacy. Our body of work is characterised by considered placemaking,

simplicity of form, elegance of proportion, contextual abstraction and material composition. Our iterative design process has built a clear architectural language that runs throughout our work with differentiation between projects provided through responses to context and programme to create moments of delight in composition, ordering,

reveal, entrance, crown, colour, material palette and detail. The images above are taken from a number of our most significant projects to convey our approach to place-making and architecture and two of the mixed use projects we have designed for LABS. They include two key projects that we have designed within the London Borough of Camden, both

of which are in collaboration with LABS, namely 101 Camley Street and the refurbishment of 90 High Holborn. These projects have provided us with a good knowledge of the area and have led to us having a collaborative relationship with the local authority's planning and design officers.

02.00

Setting

02.01 Wider Context	09
02.02 Bird's Eye Views	10
02.03 Historical Development	11
02.04 Heritage Assets of the Interior	12
02.05 Existing Photos of 1st, 2nd & 3rd Floors	13
02.06 Existing Photos of 4th Floor	14
02.07 Existing Photos of 5th Floor	15
02.08 Existing Photos of 6th and 7th Floor	16
02.09 Existing Photos of 8th Floor	17
02.10 Existing Photos of 9th Floor	18

02.01 Wider Context



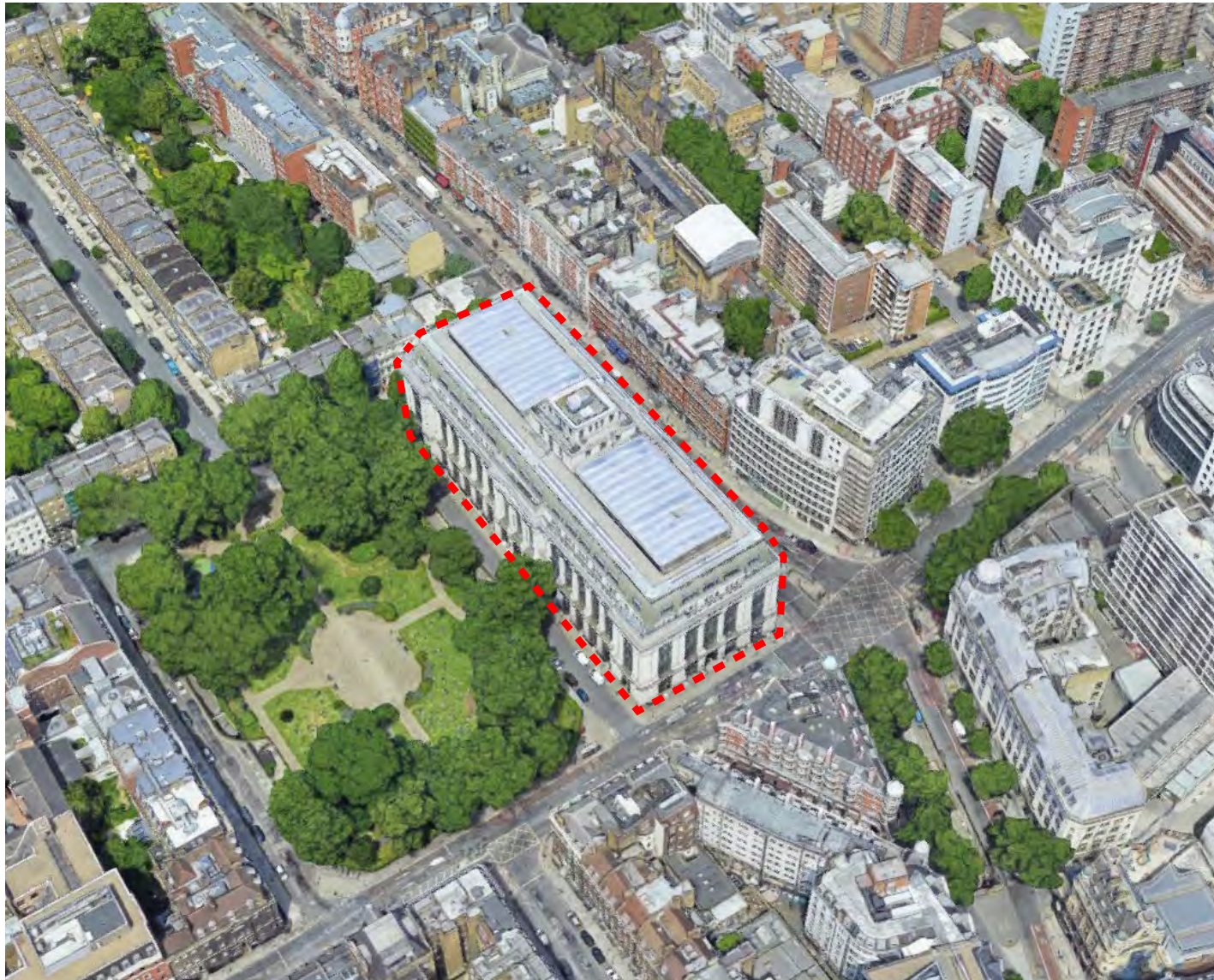
Existing Aerial Photo

The site is located to on the east side of Bloomsbury Square. It is within the Bloomsbury Conservation Area and part of the London Borough of Camden. It is well connected, with Holborn Underground Station to the South, and a number of bus routes that run past the building. A notable feature of the area is its Central London and historic nature.

- Site Location
- 01. British Museum
- 02. Bloomsbury Square
- 03. Lincoln's Inn Fields

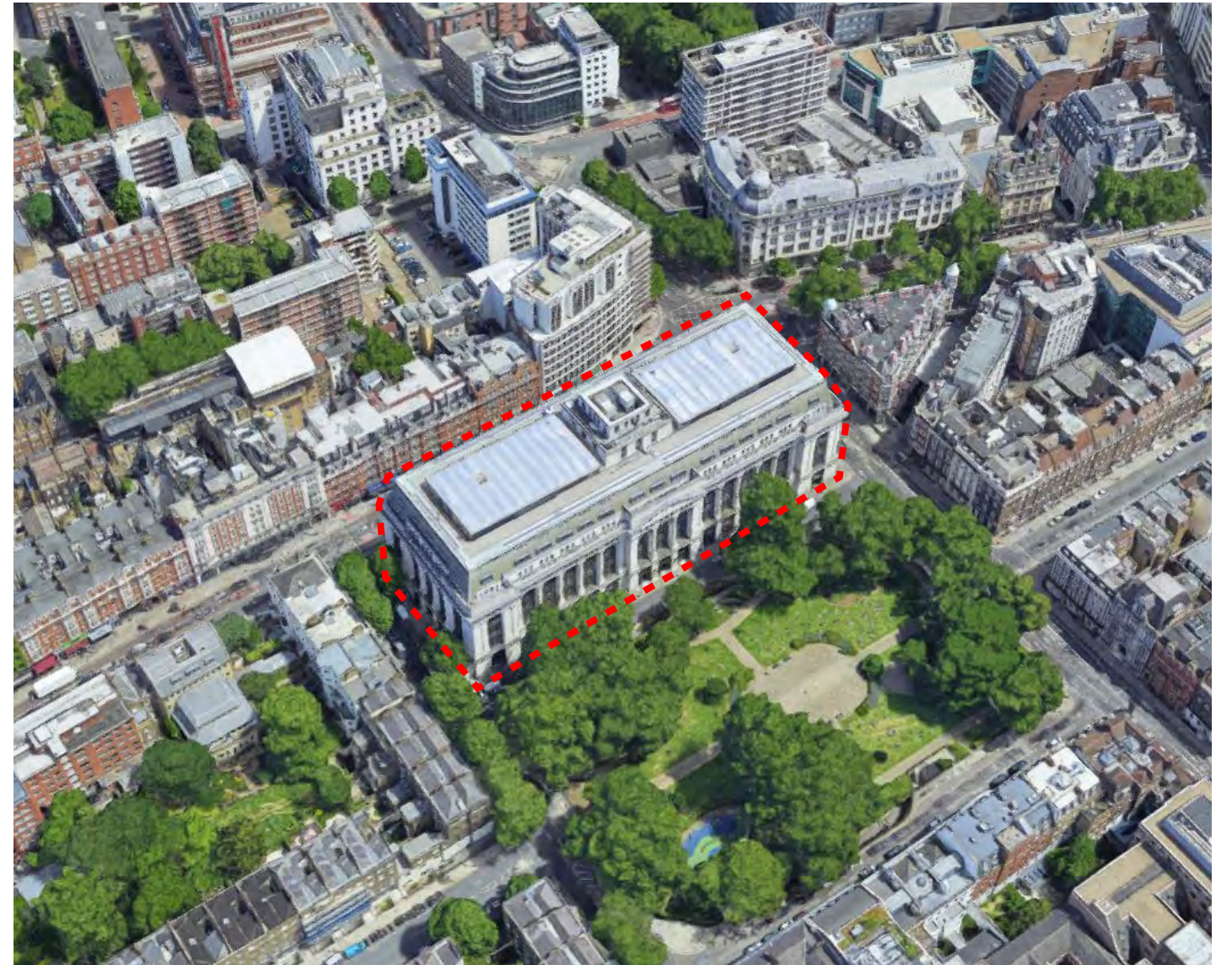
- Bloomsbury Conservation Area
- Seven Dials Conservation Area (Covent Garden)
- Kingsway Conservation Area

02.02 Bird's Eye Views



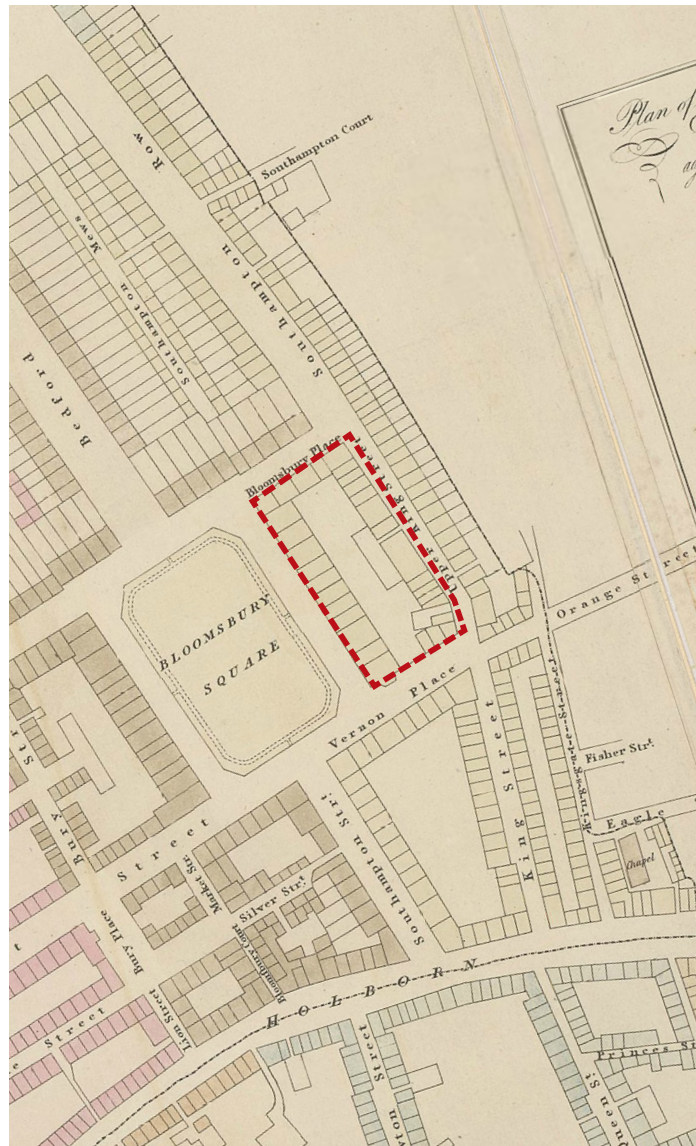
Bird's Eye View facing North

The building occupies an island site facing Bloomsbury Square, Theobalds Road, Southampton Row and Bloomsbury Place. The building's relationship with the formal green space of Bloomsbury Square is of particular note. The building, at its tallest point, is nine storeys, and at such a height and footprint it is an imposing, and impressive, addition to the city.

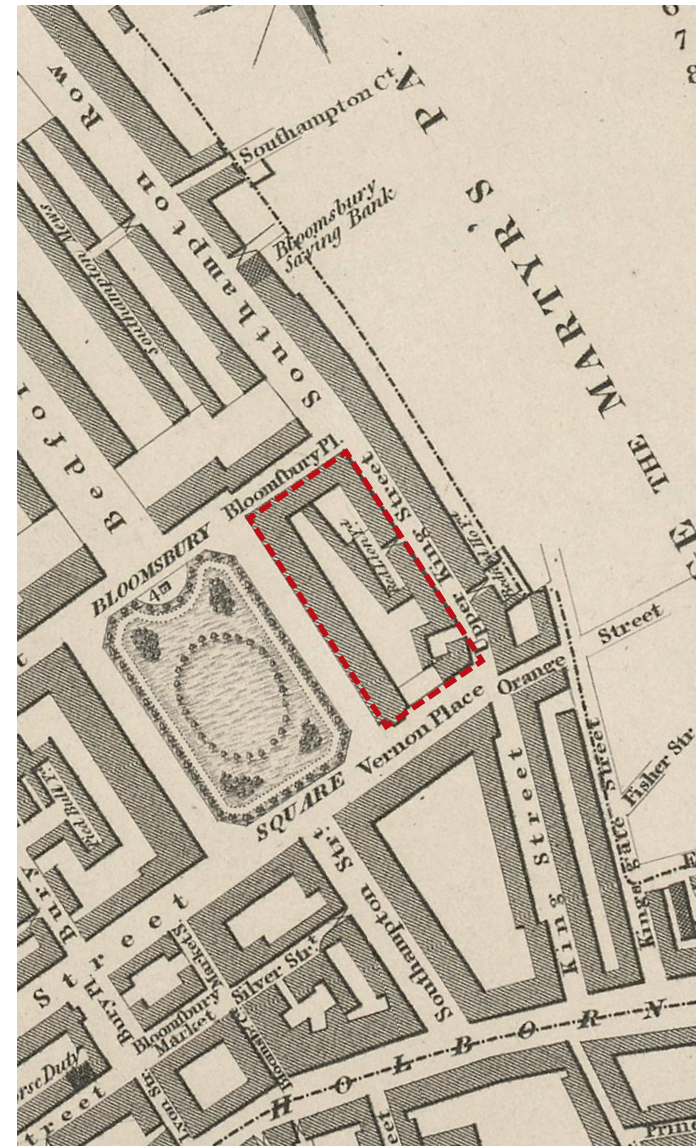


Bird's Eye View facing East

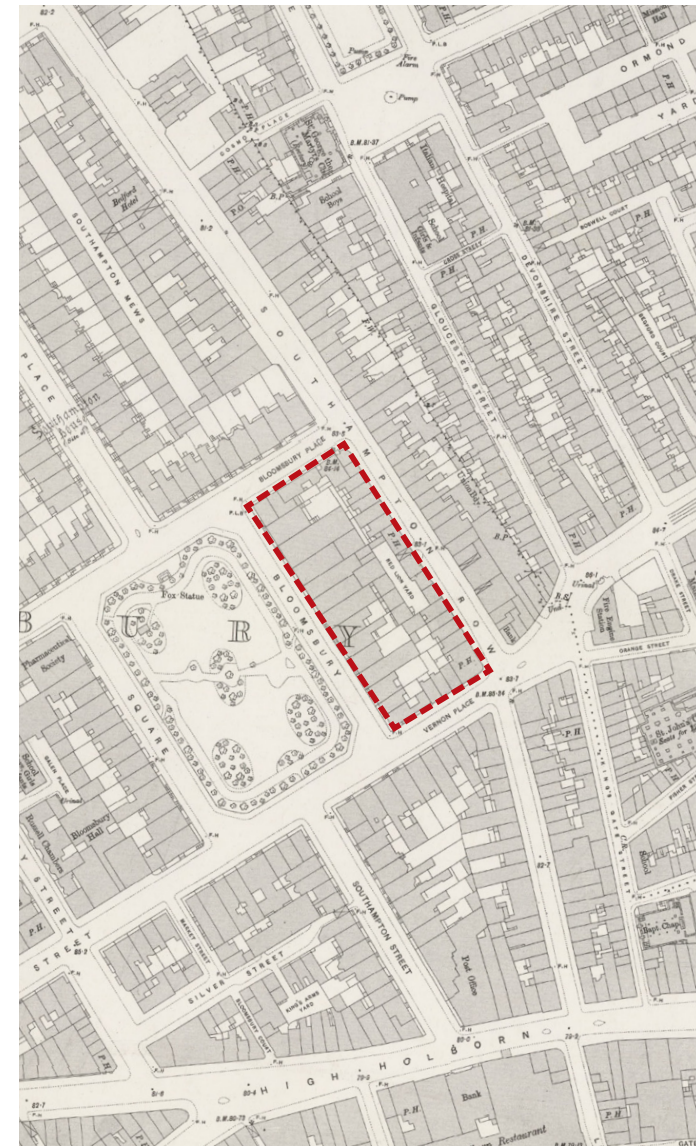
02.03 Historical Development



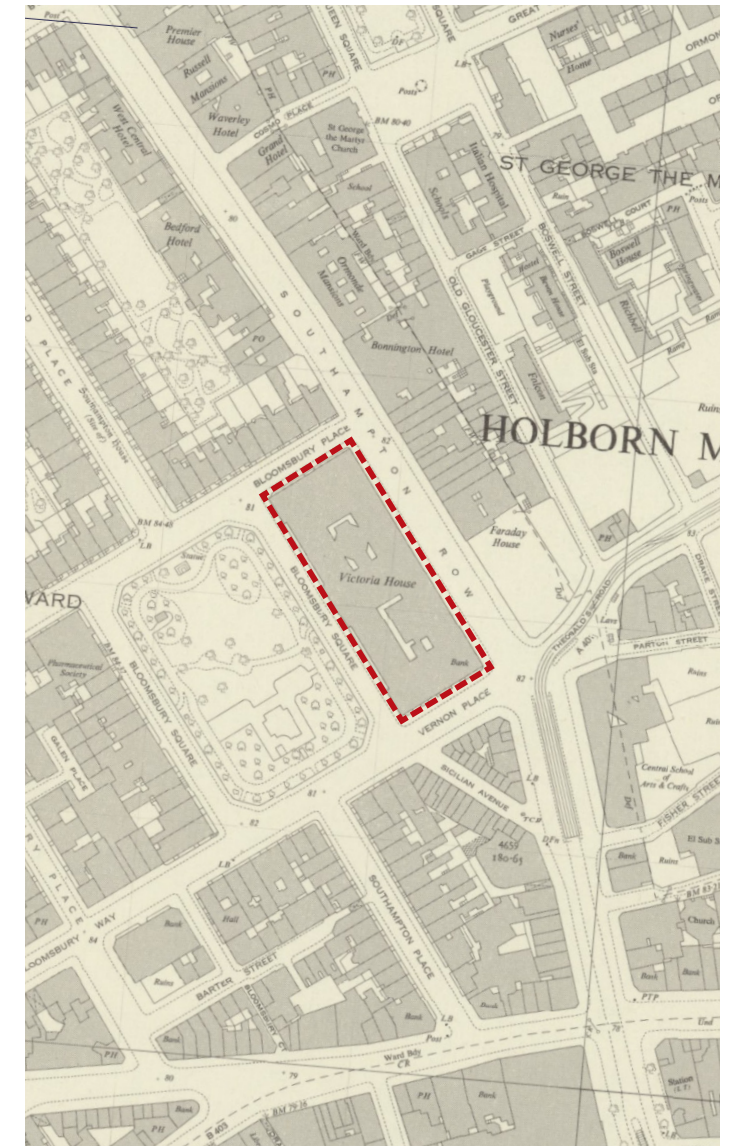
Bloomsbury Map, 1816



Bloomsbury Map, 1824



OS London Map, 1893-1896



OS London Map, 1953

Bloomsbury Square, originally known as Southampton Square was developed in the late 17th century for the Earl of Southampton. The site of Victoria House was occupied at this time by typical terraced houses of the time and occupied by aristocracy. Throughout the 18th and 19th century the area was no longer fashionable with the upper classes,

and became occupied by middle class professionals. In the 1920's, Victoria House was constructed for and occupied by the Liverpool Victoria Friendly Society. The building is a Grade II listed neoclassical building with Portland stone clad exterior, bronze infill panels, and copperlite glazing surrounds, with ornamental brasswork. Notably the building includes

fireplaces within the building from the 18th century houses previously on the site.

02.04 Heritage Assets of the Interior



Light fixtures and coffered ceiling of the main reception



Inticate neo-classical marble detailing to the main reception



Brass staircase handrail finial to the entrance on Southampton Place



Wooden post box from the original 1920's design



Brass signage in the main reception



Brasswork clock by the Bromsgrove Guild

The images above depict a few of the original features of the interior of the building that contribute towards its listed status.