

Existing Perspective 1

New wall constructed with 1.8m wide by 2.1m high double, hinged door matching existing style (shown open) with architrave to lobby and office side, also to match existing.

Frameless, double glazed door 2.1m high with sidelights and fanlight above, total 3.2m high forming entrance lobby. Solid downstand above providing abutment for ceiling cornices.



Proposed Perspective 1



Existing Perspective 2



Proposed Perspective 2



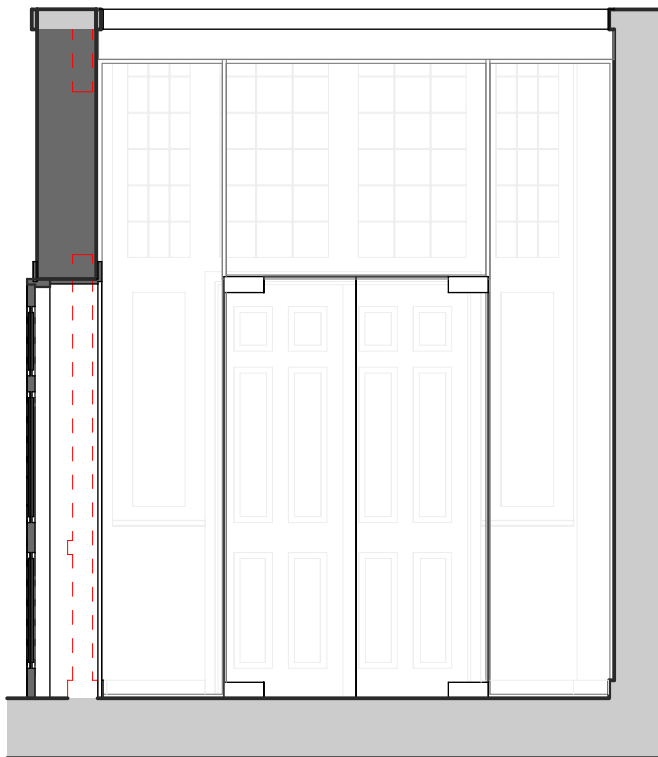
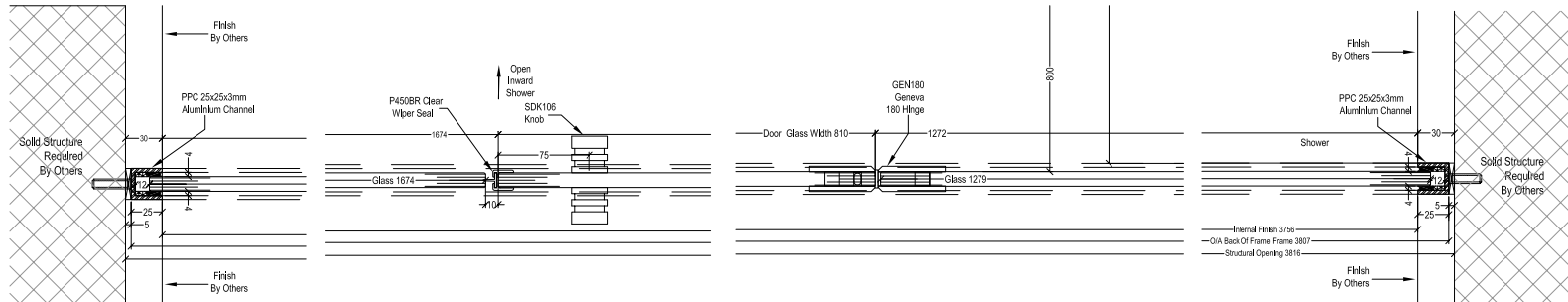
Existing Perspective 3



Proposed Perspective 3




Example internal frameless glazed doors (IQ Glass) with typical section drawing.



Proposed Elevation of Frameless Glazed Doors

P04	13/12/19	Amendments following conservation officers comments.	DLa	DBr
P03	12/11/19	Pocket sliding door height amended following client meeting.	DLa	MHo
P02	31/10/19	Revised following site inspection with Conservation officer.	DLa	MHo
P01	13/05/19	First issue.	HTa	MHo

rev	date	description					by	ckd			
LISTED BUILDING APPLICATION											
project	59-60 Russell Square, London										
document	Existing and Proposed Internal Views										
reference	project	origin	zone	level	type	role	no.	status	rev.		
	Rusq	MA	XX	XX	M3	A	00103	S4	P04		
int. job no.	3111	paper size			A2				scale		NTS



**architecture / interiors / landscape**  
Email • info@maber.co.uk  
Tel • 0121 794 8969  
**maber.co.uk**  
issuing office  
**Birmingham**

**00103**

Do not scale from this drawing • dimensions and levels to be checked on site by the contractor  
all dimensions in millimetres unless otherwise noted • all levels in metres unless otherwise noted.  
The title, copyright and confidential information in this document belongs to Maber Associates Limited.  
Copyright 2019. All rights reserved. You may not reproduce this document or disclose it to others without the consent of Maber Associates Limited.