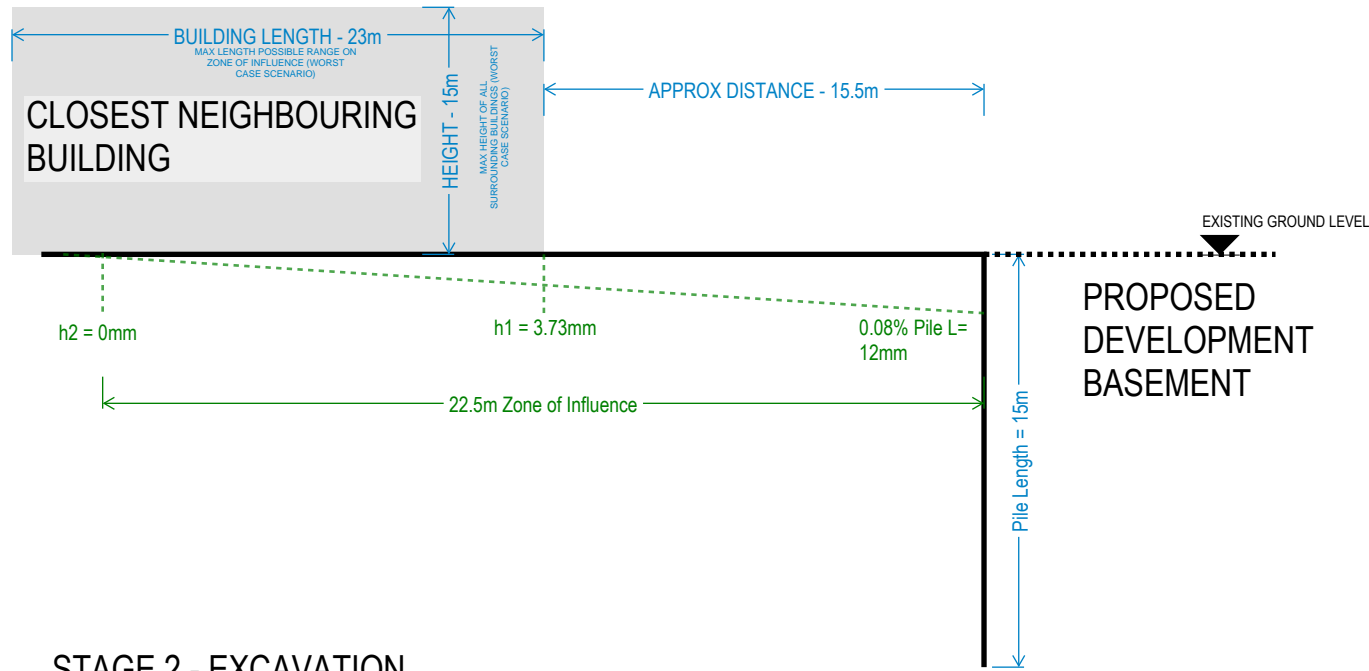


BUILDING IMPACT ASSESSMENT - WORST CASE SCENARIO

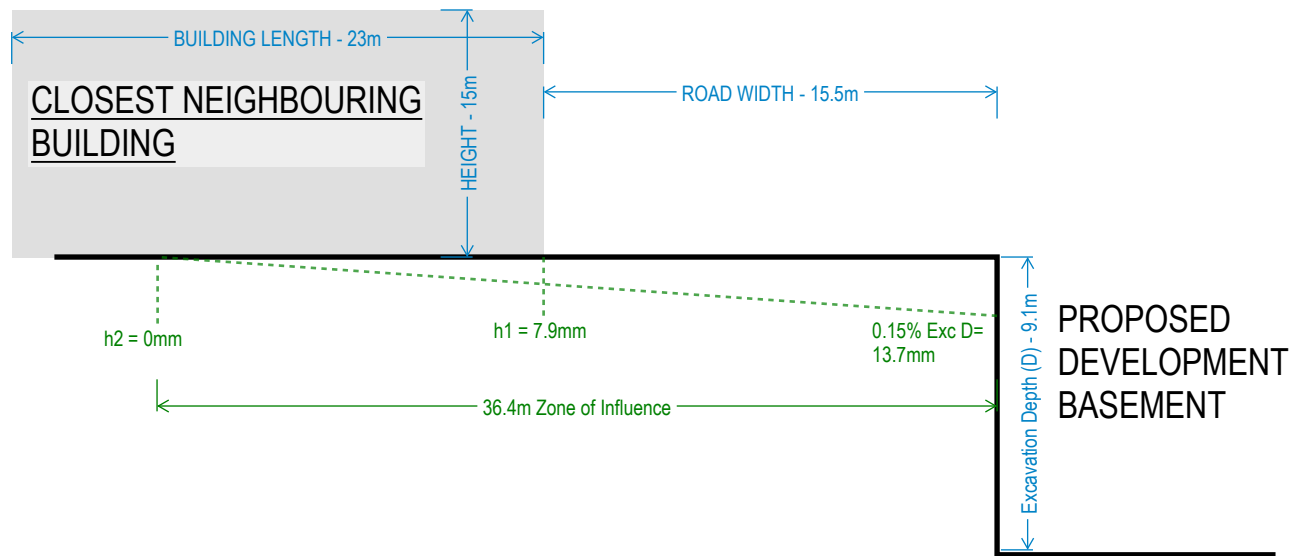
STAGE 1 - PILE INSTALLATION

a) HORIZONTAL MOVEMENT



STAGE 2 - EXCAVATION

a) HORIZONTAL MOVEMENT



NOTE
 - DESIGN VALUES BASED ON BOTH CIRIA C760 AND CALIBRATED WITH SITE SPECIFIC 2D FE ANALYSIS
 - MOVEMENTS PLOTS ARE NOT DRAWN TO SCALE

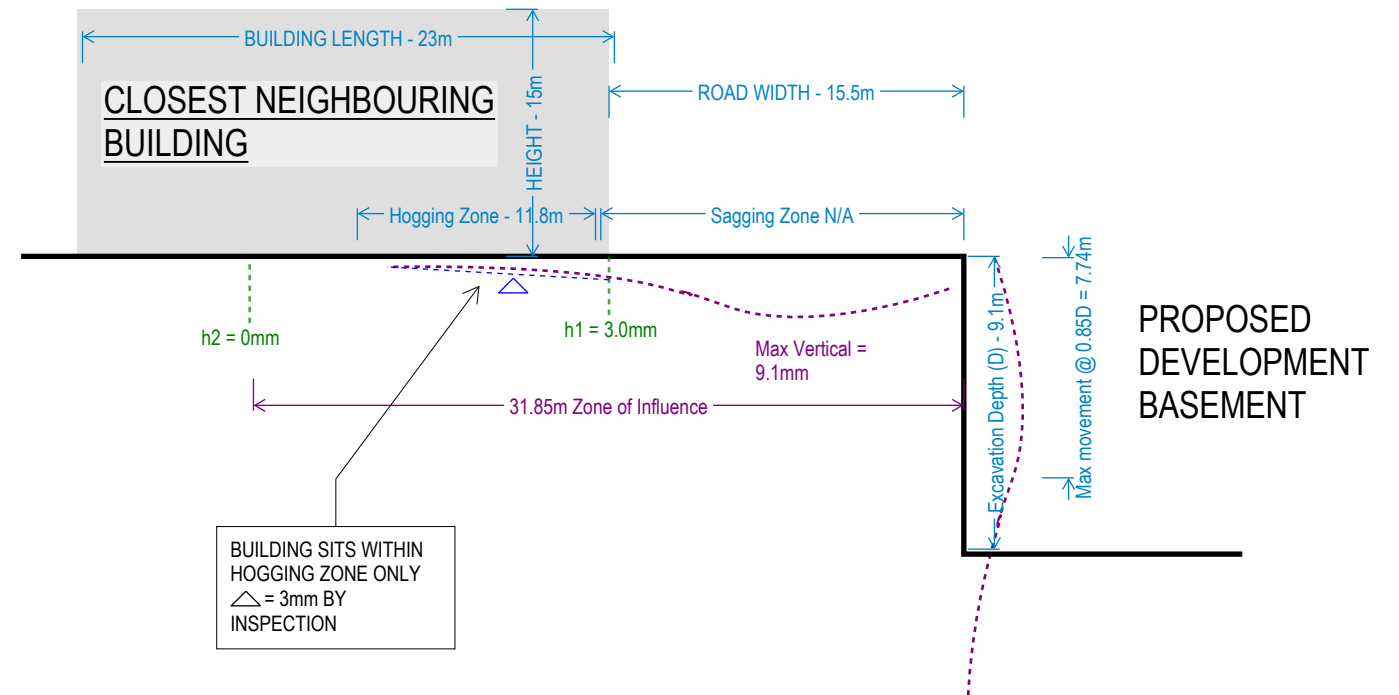
REV	DATE	DESCRIPTION	BY	CHECKED
-----	------	-------------	----	---------

b) VERTICAL MOVEMENT

NOTE - Vertical movement during pile installation phase does not cause damage as explained in CIRIA C760

DAMAGE CATEGORY = CLASS 1

b) VERTICAL MOVEMENT



PROJECT	St Pancras Campus	TITLE	BIA DAMAGE CATEGORY ASSESSMENT	
DATE	09/12/2019	SCALE	NTS	STATUS INFORMATION
		CAD FILENAME	N/A	
DRAWN	DP	CHECKED	GM	PROJECT No. 4409
				DRAWING No. SHEET 1/1
				REV 01