

Three-room flat. 925 sq ft (excl balcony)

Four-room flat. 1240 sq ft (excl. balcony)

dotted line thro' living room shows possibility of conversion into five-room flat with separate dining room.

218  
4 APR 1960

LOUIS de SOISSONS, PEACOCK, HODGES & ROBERTSON.  
LONDON EXETER  
WELWYN GARDEN CITY

52 ETON AVENUE

SKETCH PLANS OF THREE & FOUR ROOM FLATS.

DRAWING NO 23/P.2.

SCALE 4' = 1"

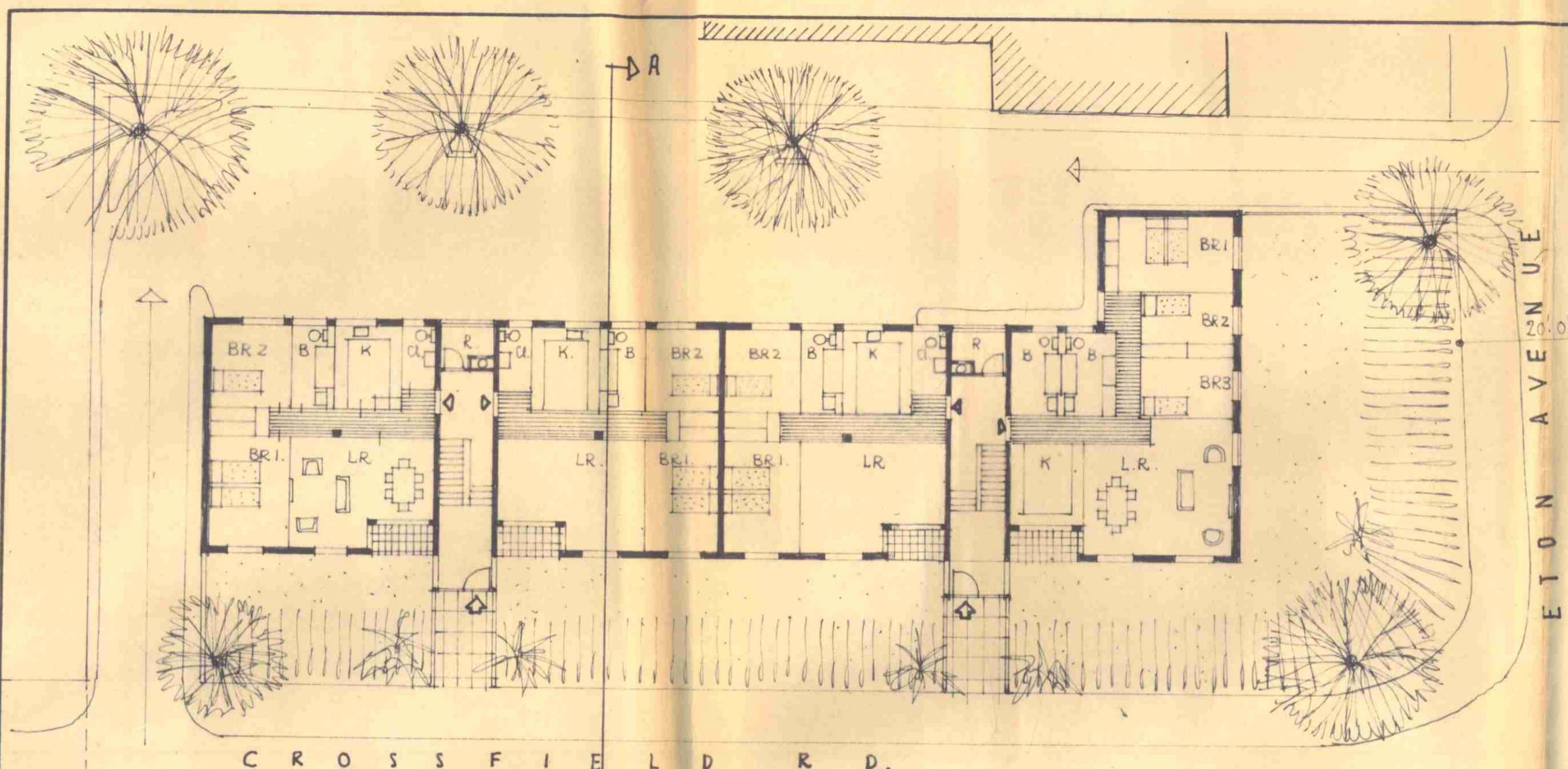
AMENDMENTS

DATE MARCH 31<sup>st</sup> '60

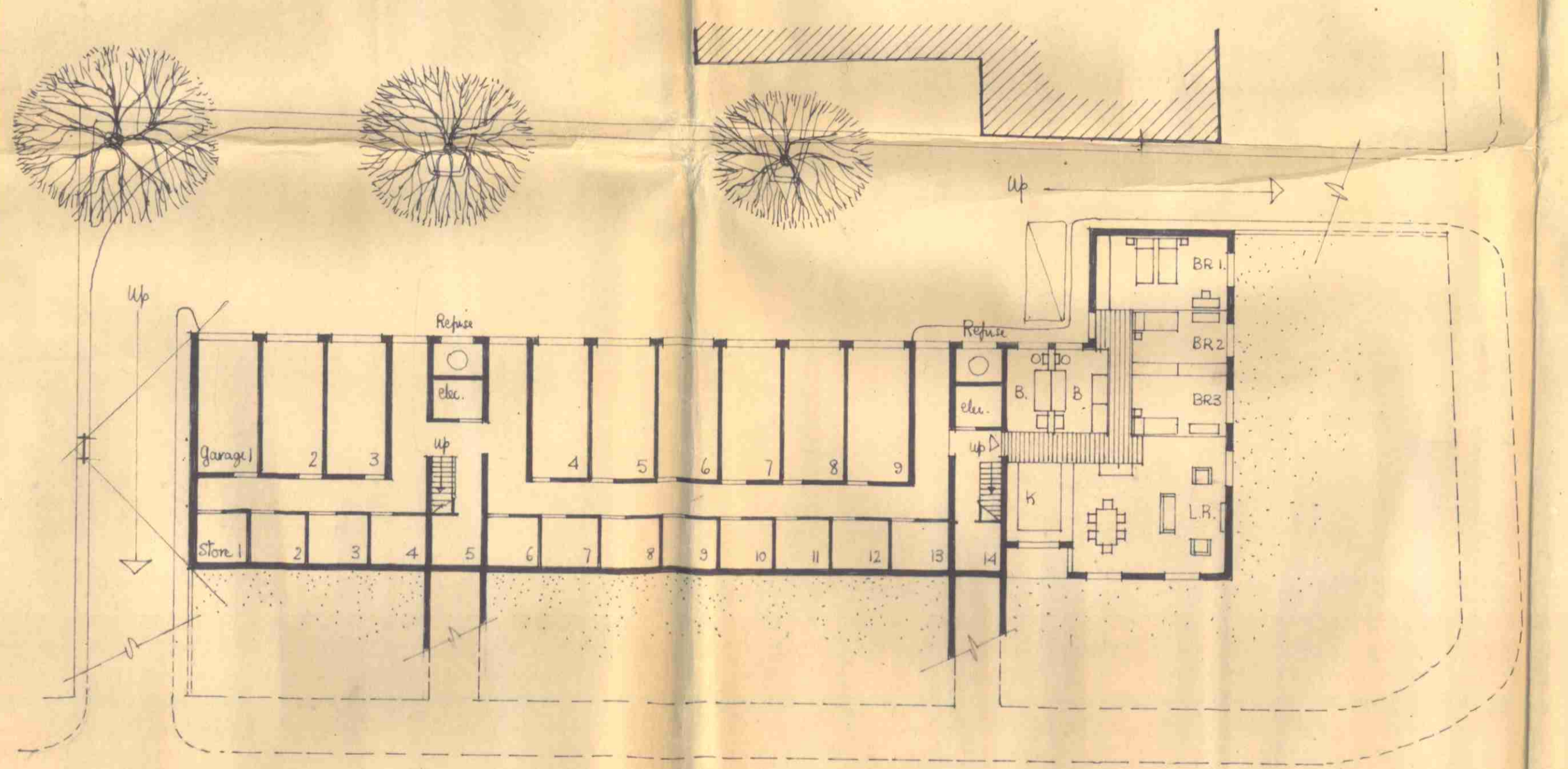
DRAWN BY *Jmy*

CHECKED BY

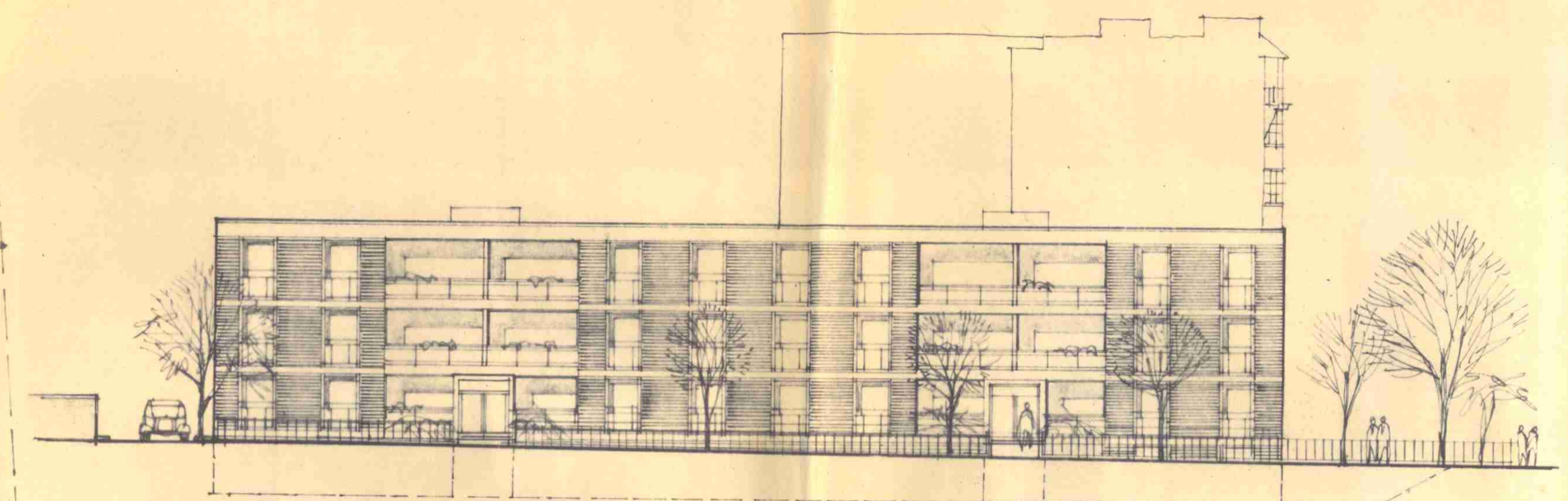
A



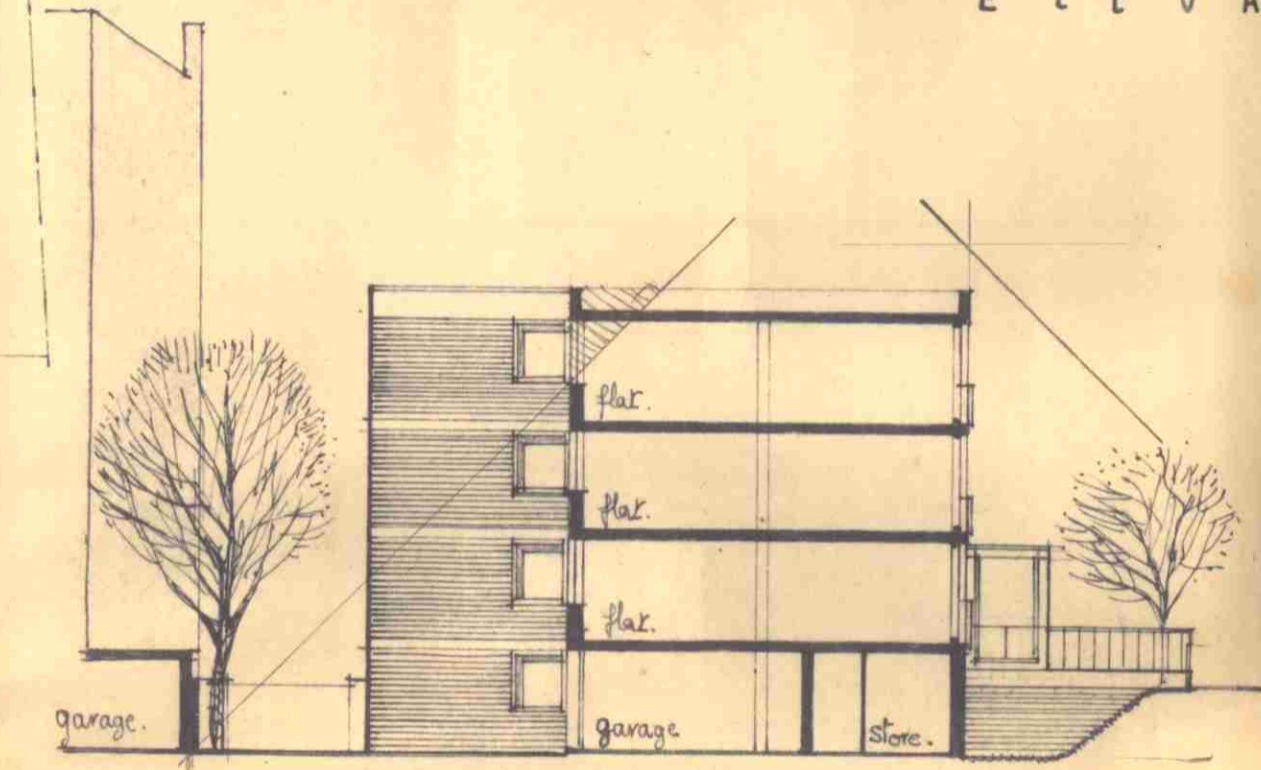
PLAN AT GROUND FLOOR LEVEL.  
(UPPER FLOORS SIMILAR)



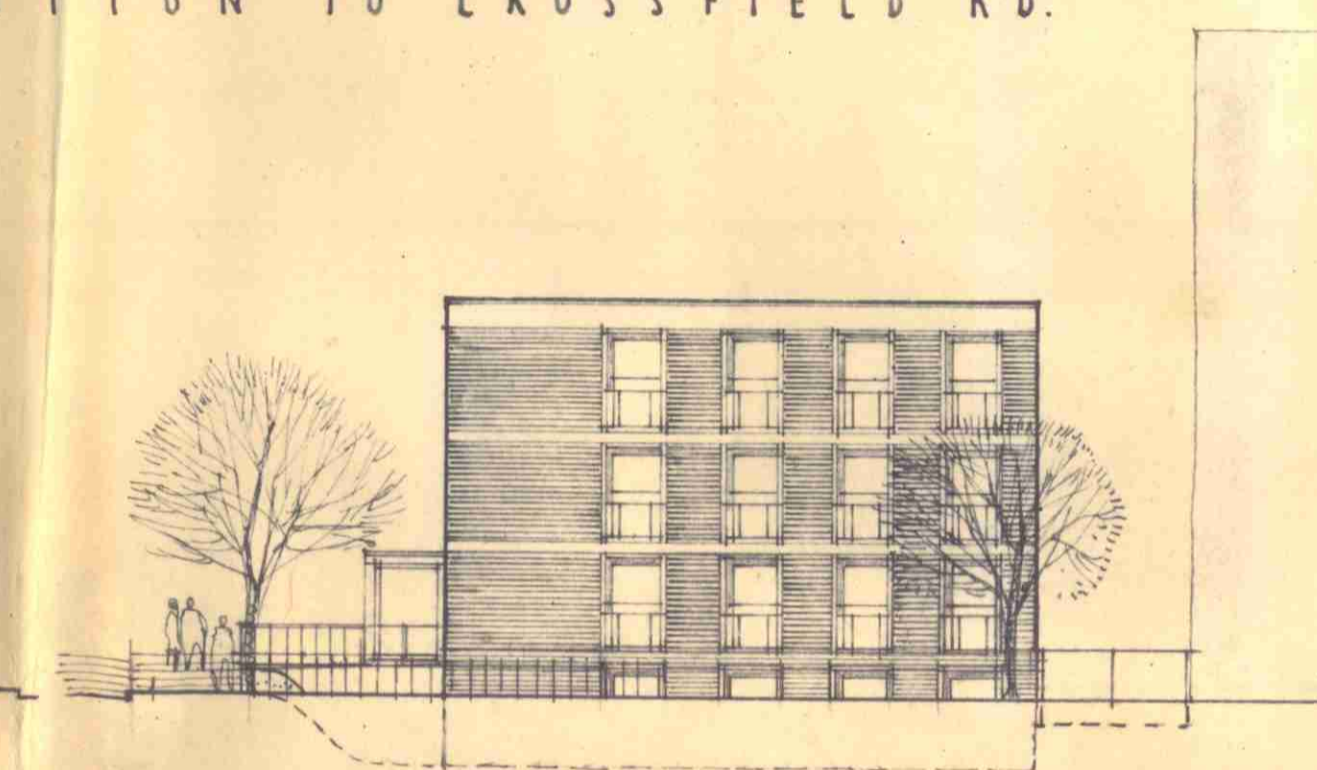
PLAN AT LOWER GROUND FLOOR LEVEL.



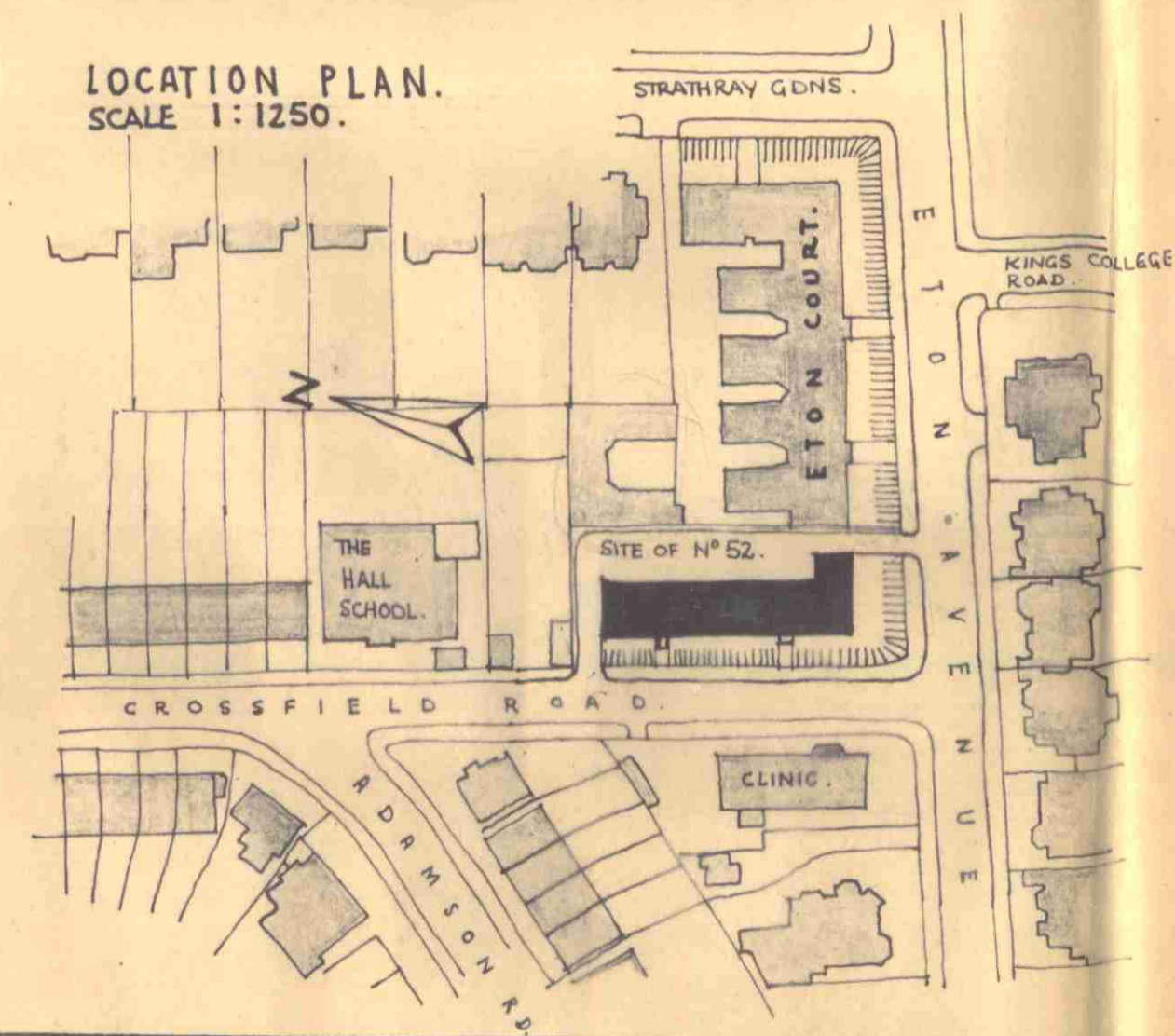
ELEVATION TO CROSSFIELD RD.



SECTION A.A.



ELEVATION TO ETON AVENUE.



LOCATION PLAN.  
SCALE 1:1250.

CROSS AREA OF SITE .49 ACRE.  
MAX. N° OF PERSONS 49.  
AT 100 TO THE ACRE.

ACCOMMODATION PROVIDED:  
9 x 3-room flats = 27 HABITABLE ROOMS.  
4 x 4-room flats = 16 " " "  
TOTAL. 13 flats = 43 " " "  
X 1.1 PERSONS PER HABITABLE ROOM = 47.3 PERSONS.

218

4 APR 1960

52 ETON AVENUE

LOUIS de SOISSONS, PEACOCK, HODGES & ROBERTSON.  
LONDON EXETER  
WELWYN GARDEN CITY

PLANS, SECTION & ELEVATION.		DRAWING N°
		23/P.1.
SCALE 1/4" = 1'	AMENDMENTS	
DATE MARCH 1960	DRAWN BY <i>dy</i>	CHECKED BY