

© BOWKER SADLER PARTNERSHIP LIMITED
 THIS DRAWING IS THE SUBJECT OF COPYRIGHT WHICH VESTS IN BOWKER SADLER PARTNERSHIP LIMITED. IT IS AN INFRAINGEMENT OF COPYRIGHT TO REPRODUCE THIS DRAWING BY ANY MEANS, INCLUDING ELECTRONIC, WITHOUT THE EXPRESS WRITTEN CONSENT OF BOWKER SADLER PARTNERSHIP LIMITED WHICH RESERVES ALL ITS RIGHTS.
 BOWKER SADLER PARTNERSHIP LIMITED ASSERTS ITS RIGHTS TO BE IDENTIFIED AS THE AUTHOR OF THIS DESIGN.
 REPORT ERRORS & OMISSIONS TO ARCHITECT
 CHECK ALL DIMENSIONS ON SITE
 DRAWING TO BE READ IN CONJUNCTION WITH THE HEALTH AND SAFETY PLAN AND ALL RELEVANT RISK ASSESSMENTS

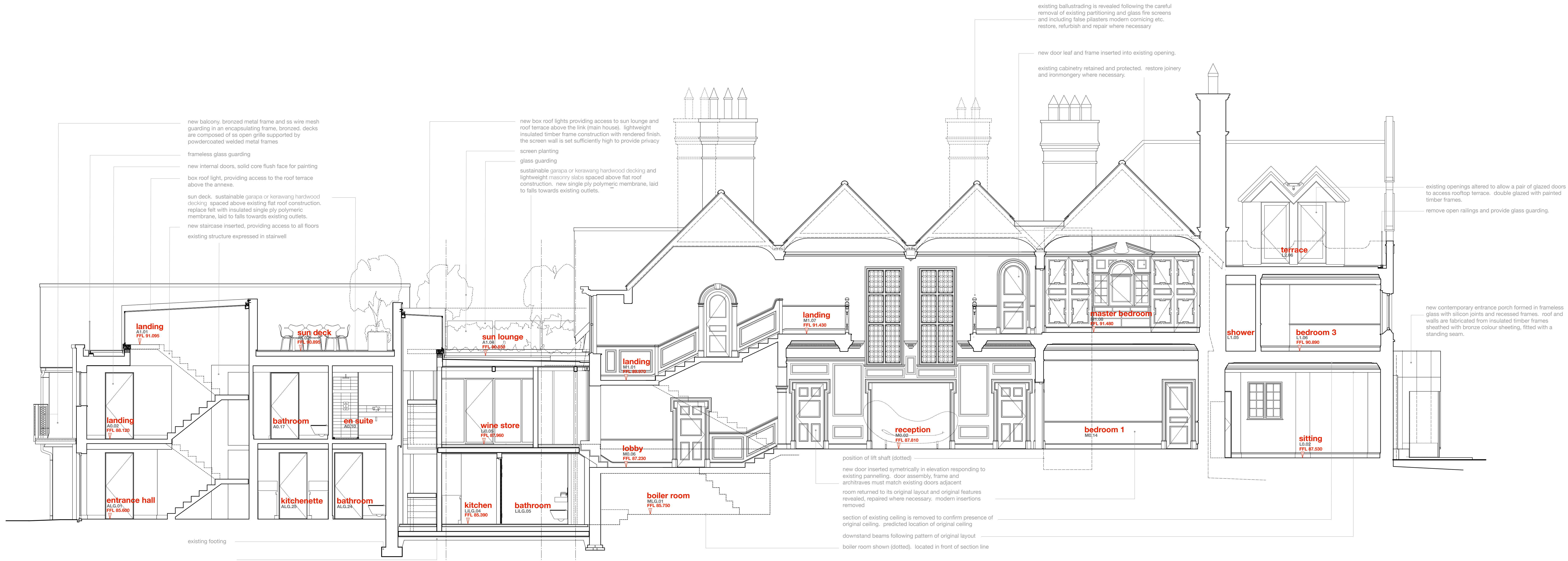
Survey drawings are kindly provided by Mazon Hughes Land Surveys Ltd and are assumed to accurately describe the existing buildings, services and external spaces.

KEY

Features

- windows**
- bhc bottom hung casement window
- thc top hung casement window
- ahc side hung casement window
- vss vertical sliding sash window
- tt tilt and turn window
- ff fixed light window
- rt roof light (flat roof)
- vtl value style roof light pitched roof
- h ceiling hatch
- sd sliding door
- pd pivot door
- f new wall / roof mounted flue to gas boiler / gas fire. terminal colour is powder coated bronze
- abx new extract terminal as air brick, such as nylon reinforced, colour coded to suit brickwork
- fxx mushroom extract terminal for flat roof
- pxx fabricated lead pitched roof vent as extract terminal, such as provided by o'rien sheet lead fabricators ltd

note: existing windows are generally timber frames with leaded glazing (single glazed) and fine painted metal sashes. some metalwork has been replaced with painted timber to match the original sash on the south and the west elevations of the main house the windows are simpler with single glazing and painted timber frames. there are a pair of painted metal frame windows on the north elevation
 the timber casement windows found on the annex will be replaced by low energy double glazed units with an anodised bronze aluminium frame
 Existing building fabric and structure, including roof, floor, masonry, windows, and hardware goods are to be maintained and repaired/consolidated where necessary. the conditions survey will form the basis from which the maintenance works will be scheduled and agreed.



Section AA: South

DATUM 82.000



Section BB West

DATUM 82.000

REV	DATE	DRN	CHKD
PROJECT			
The Hoop, 17 Lyndhurst Gardens, Hampstead, London			
Residing & Grand Victorian House for Private Domestic Accommodation, NW3 5NU			
CLIENT			
Mr and Mrs Yu			
REPRESENTED BY			
JAGA Developments (London)			
DRAWING			
Sections DD and EE as Proposed			
SCALE	SHEET SIZE	DRAWN	CHECKED
1:50	A0	GMG	
DATE		DATE	
Oct 2019		Oct 2019	

BOWKER SADLER ARCHITECTURE
 A: Hatheflow House, Hatheflow, Romley, Stockport SK6 3DY
 T: 0161 406 7333
 E: info@bowker-sadler.co.uk
 W: www.bowker-sadler.co.uk

DATE	NO	REVISION
19013	1150	A
STATUS		
FOR PLANNING		