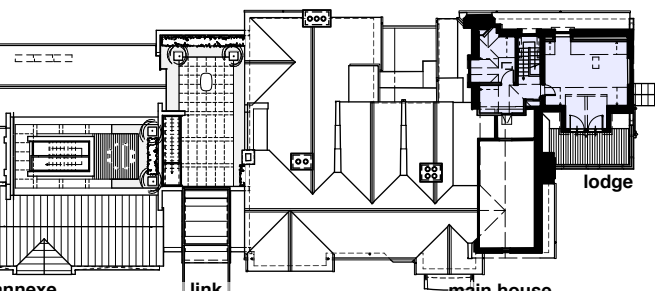


© BOWKER SADLER PARTNERSHIP LIMITED  
THIS DRAWING IS THE SUBJECT OF COPYRIGHT WHICH VESTS IN BOWKER SADLER PARTNERSHIP LIMITED. IT IS AN INFRINGEMENT OF COPYRIGHT TO REPRODUCE THIS DRAWING, BY WHATEVER MEANS, INCLUDING ELECTRONIC, WITHOUT THE EXPRESS WRITTEN CONSENT OF BOWKER SADLER PARTNERSHIP LIMITED WHICH RESERVES ALL ITS RIGHTS.  
BOWKER SADLER PARTNERSHIP LIMITED ASSERTS ITS RIGHTS TO BE IDENTIFIED AS THE AUTHOR OF THIS DESIGN.  
■ REPORT ERRORS & OMISSIONS TO ARCHITECT  
■ CHECK ALL DIMENSIONS ON SITE  
■ DRAWING TO BE READ IN CONJUNCTION WITH THE HEALTH AND SAFETY PLAN AND ALL RELEVANT RISK ASSESSMENTS

Survey drawings are kindly provided by Mazon-Hughes Land Surveys Ltd and are assumed to accurately describe the existing buildings, services and external spaces.

#### KEY



- Existing Walls  
New walls to be inserted

#### Features

##### windows

- bhc bottom hung hung timber casement window  
the top hung hung timber casement window  
shc side hung casement  
vss vertical sliding sash timber window  
fl fixed light timber window  
fri roof light (flat roof)  
vri velux style roof light (pitched roof)  
h ceiling hatch  
hf floor hatch  
sd sliding door  
sfd sliding folding door

##### drainage services and landscape

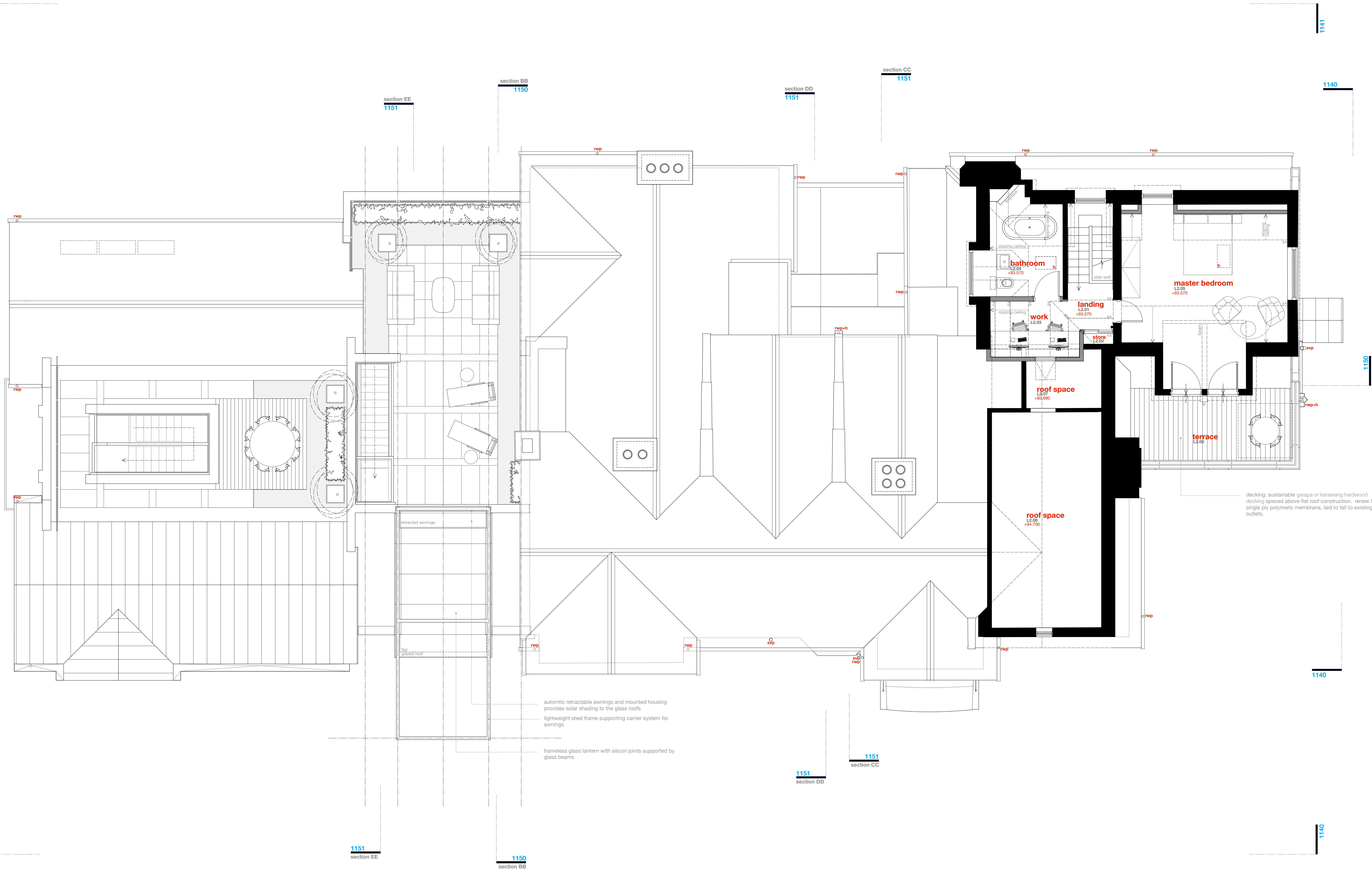
- mh Existing manhole  
ic Existing inspection chamber  
wic Existing water service inspection chamber

##### FWIC 01

- fwic Inspection chamber collecting foul water drainage  
syp Soil vent pipe and underground foul water drainage  
rwp Rainwater pipe, gully and underground surface water drainage  
rwp-h Rainwater hopper draining into rainwater hood  
sp Rainwater spout

##### mechanical heating

- gas gas fired boiler and wall mounted flue  
unvented cylinder



automatic retractable awnings and mounted housing provides solar shading to the glass roofs  
lightweight steel frame supporting carrier system for awnings  
frameless glass lantern with silicon joints supported by glass beams

decking: sustainable garapa or kerawang hardwood  
cladding spaced above flat roof construction, renew felt single ply polymeric membrane, laid to fall to existing outlets.

REV DATE DRN CHD

PROJECT  
**The Hoo,  
17 Lyndhurst Gardens,  
Hampstead, London**  
Returning A Grand Victorian House to Private Domestic Accommodation  
NWS SNU

CLIENT  
**Mr and Mrs Yu**  
REPRESENTED BY  
**JAGA Developments (London)**

DRAWING  
**Second Floor Layout  
as Proposed**

SCALE	SHEET SIZE	DRAWN	CHECKED	DATE
1:50	A0	GMcG		Aug 2019

**BOWKER SADLER ARCHITECTURE**  
A: Hatherlow House, Hatherlow, Romley, Stockport SK6 3DY  
T: 0161 406 7333  
E: info@bowker-sadler.co.uk  
W: www.bowker-sadler.co.uk

JOB No.	DRAWING No.	REVISION
<b>19013</b>	<b>1123</b>	<b>A</b>
STATUS <b>FOR PLANNING</b>		