

© BOWKER SADLER PARTNERSHIP LIMITED
■ THIS DRAWING IS THE SUBJECT OF COPYRIGHT WHICH VESTS IN BOWKER SADLER PARTNERSHIP LIMITED. IT IS AN INFRINGEMENT OF COPYRIGHT TO REPRODUCE THIS DRAWING, BY WHATEVER MEANS, INCLUDING ELECTRONIC, WITHOUT THE EXPRESS WRITTEN CONSENT OF BOWKER SADLER PARTNERSHIP LIMITED WHICH RESERVES ALL ITS RIGHTS
BOWKER SADLER PARTNERSHIP LIMITED ASSERTS ITS RIGHTS TO BE IDENTIFIED AS THE AUTHOR OF THIS DESIGN
■ REPORT ERRORS & OMISSIONS TO ARCHITECT.
■ CHECK ALL DIMENSIONS ON SITE.
■ DRAWING TO BE READ IN CONJUNCTION WITH THE HEALTH AND SAFETY PLAN AND ALL RELEVANT RISK ASSESSMENTS

DTB - DOWN TO BELOW
DFA - " FROM ABOVE

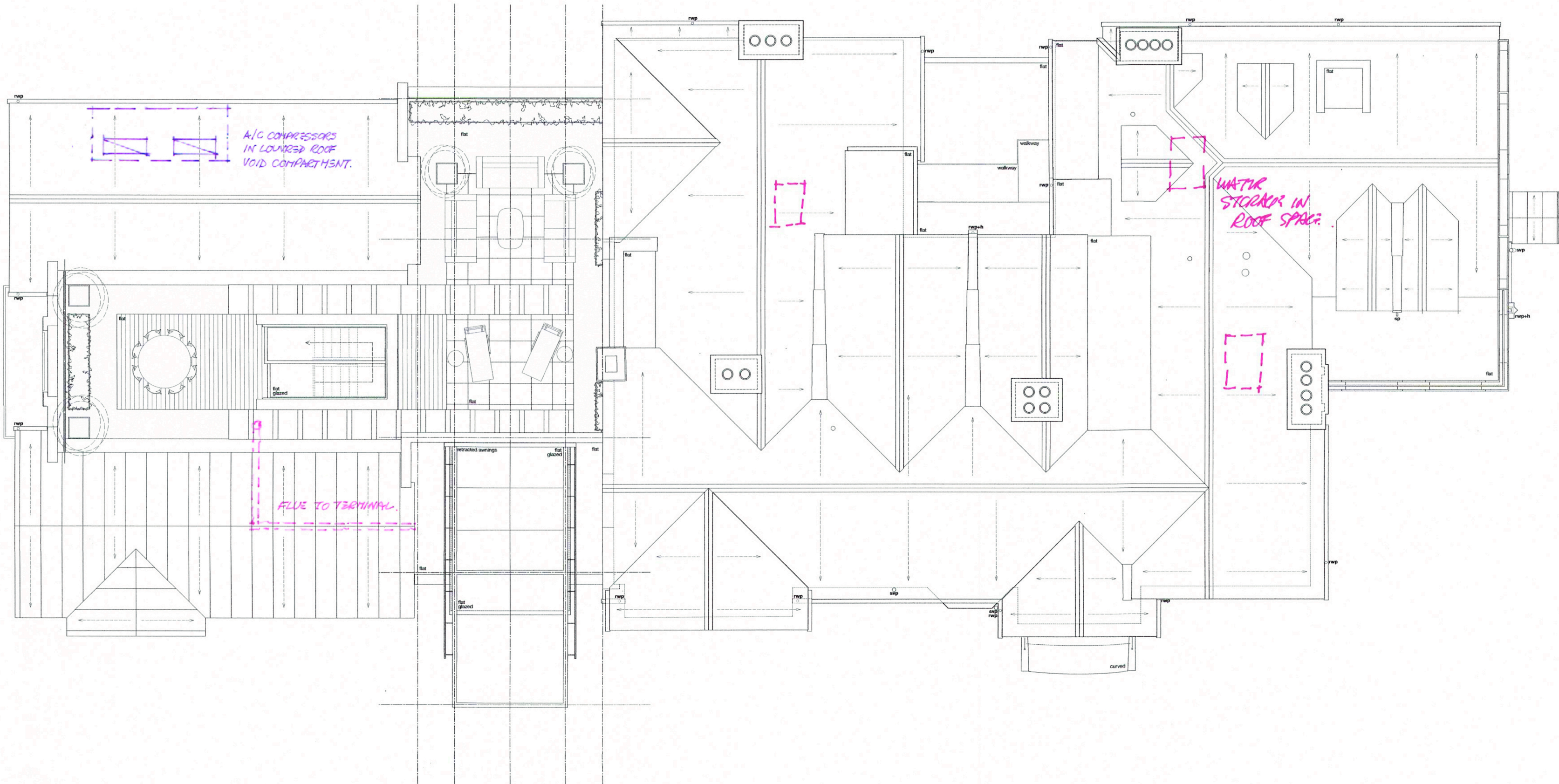
INTERNAL + EXTERNAL DRAINAGE

EXTG.
PROPOSED

NEW HEATING PUMP AND MAIN PIPE RUNS + RISERS.

AIR CONDITIONING

A/C COMPRESSORS IN LOUVERED ROOF RECESS.



REV. DATE DRN. CHKD.

PROJECT
The Hoo,
17 Lyndhurst Gardens,
Hampstead, London
Returning A Grand Victorian House To Private Domestic Accommodation
NW3 5NU

CLIENT
Mr and Mrs Yu
REPRESENTED BY
JAGA Developments (London)

DRAWING
Drainage and Services
Roof Layout

SCALE	SHEET SIZE	DRAWN	CHECKED	DATE
1:100	@ A2	WDH		Nov 2019

BOWKER SADLER ARCHITECTURE
A: Hatherlow House, Hatherlow, Romiley, Stockport SK6 3DY
T: 0161 406 7333
E: bsp@bowker-sadler.co.uk
W: www.bowker-sadler.co.uk

JOB No	DRAWING No	REVISION
19013	4504	A
STATUS FOR PLANNING		