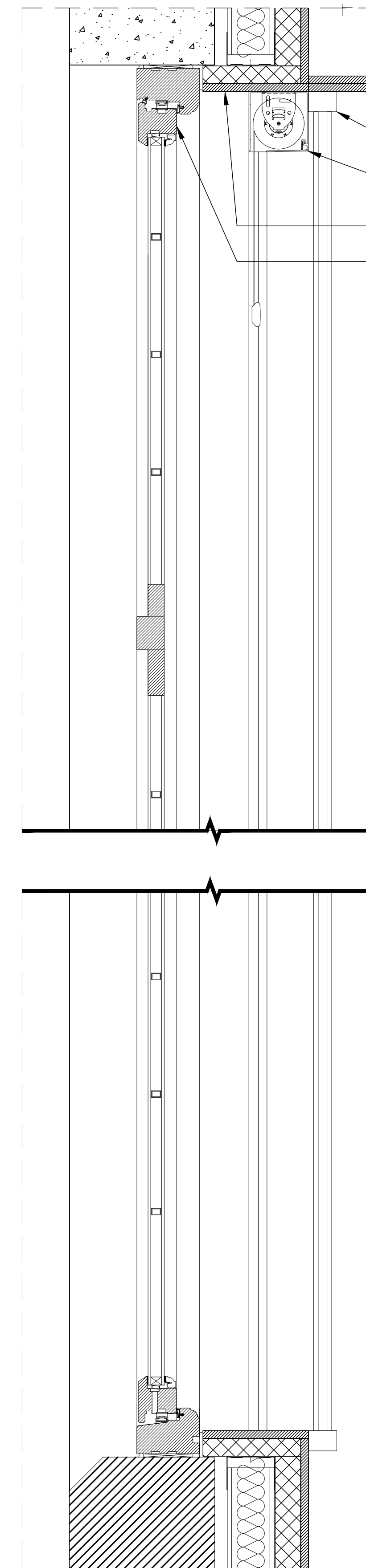


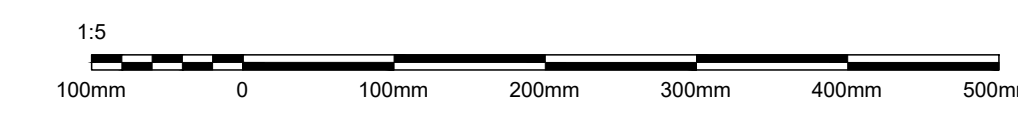
01 Front Elevation  
dW03 Window detail: Type C



03 Plan  
dW03 Window detail: Type C



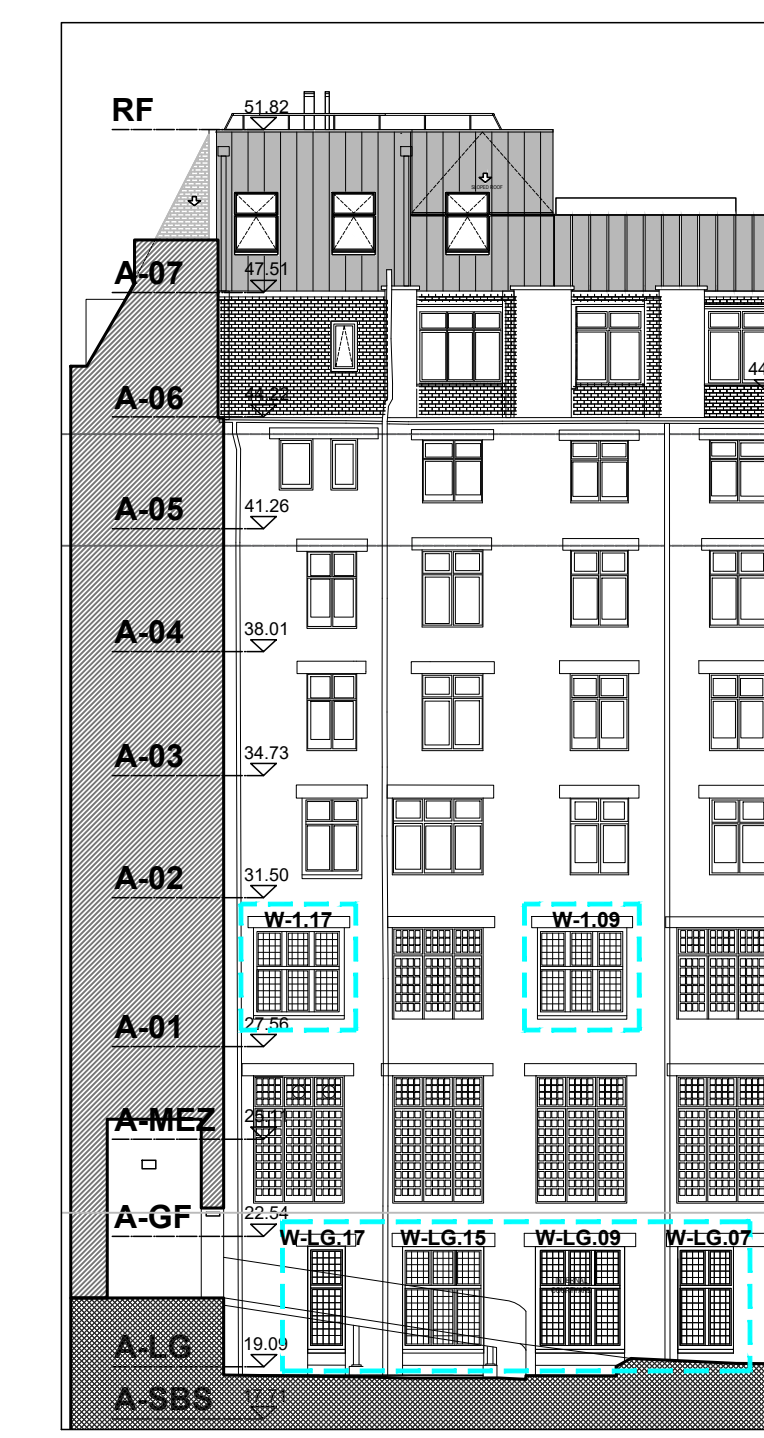
02 Section AA  
dW03 Window detail: Type C



GENERAL NOTES

Do not scale from drawings.  
Errors to be reported immediately to the Architect.  
To be read in conjunction with all relevant Architects', Services and Structural Engineers' drawings.  
All dimensions to be checked on site.

- 2 x 12.5mm plasterboard ceiling
- Proposed vertical, sliding secondary glazing
- Proposed black-out blind
- Proposed insulated plasterboard to return into the window reveal
- Timber frame matching the existing window



Rev.	Date	Description	DB	CB
P2	26.11.19	Design amended	MS	PA
P1	11.11.19	For planning	MS	PA

TT Architects

2 Eustace House  
Old Paradise Street  
London, SE11 6AN

Project  
Z-WILD COURT  
4 Wild Court & 75 Kingsway  
London  
WC2B 4AU

Client  
Z Hotels

Drawing Name  
Assembly detail: Window Type C

Date  
29.10.2018  
Issue  
Planning

Scale  
1:5 @ A1  
Drawn/Checked  
MS/PA

Drawing No. & Revision  
005-dW03-P2