

Key:

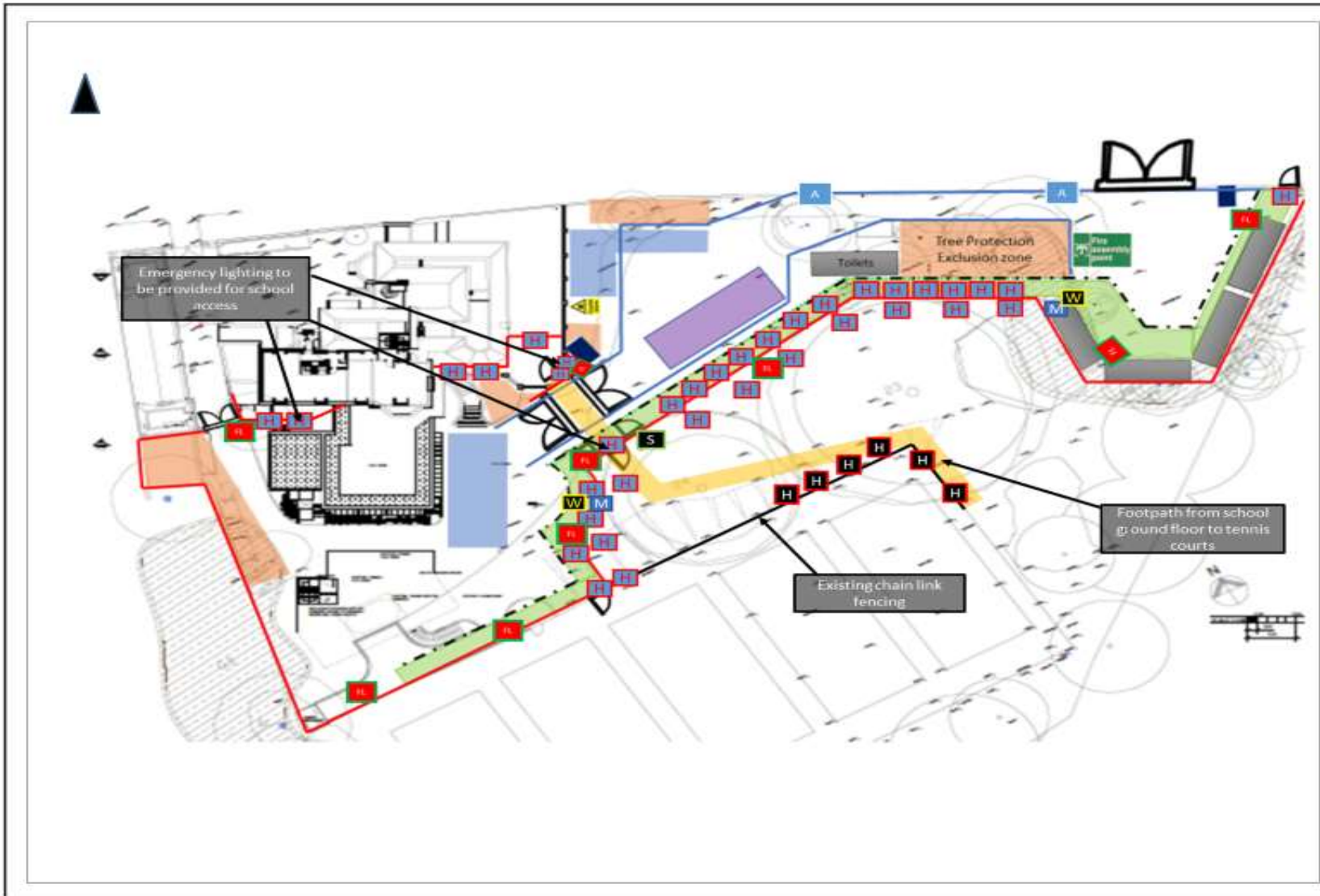
[Red outline]	Heating
[Grey area]	Site Accommodation & Welfare
[M in blue box]	MDU Location
[T in purple box]	10 KVA Transformer
[FL in green box]	150w Heanding Light
[FL in red box]	150w Wall Mounted Floodlight
[Water tap symbol]	Water tap
[Orange box]	32A RCD Supply
[FL in green box]	Fluorescent Light
[FL in green box]	Fluorescent Emergency Light
[ADM Monitor symbol]	ADM Monitor 240v supply - centrally powered

Notes:

Project Title:
Charming Junior School
Drawing Title:
Site Temporary Electrical plan
Client:
Charming Junior School
Scale:
N/A
Date:
04-10-2018
Dwg No:
001



Curo Construction Ltd
Suite 6, Sandhurst House,
297 Yorktown Road, Sandhurst,
Berkshire, GU47 0QA
www.curoconstruction.com



Key:

[Red square]	Hoarding
[Grey square]	Site Accommodation & Welfare
[Blue square]	MDU Location
[Purple square]	10 kVA Transformer
[Red square with L]	110v Hoarding Light
[Red square with F]	110v Wall Mounted Floodlight
[Yellow square with W]	Water tap
[Orange square with R]	30A RCD Supply
[Green square with FL]	Fluorescent Light
[Green square with EL]	Fluorescent Emergency Light
[Blue square with S]	100A 110v supply - constantly powered

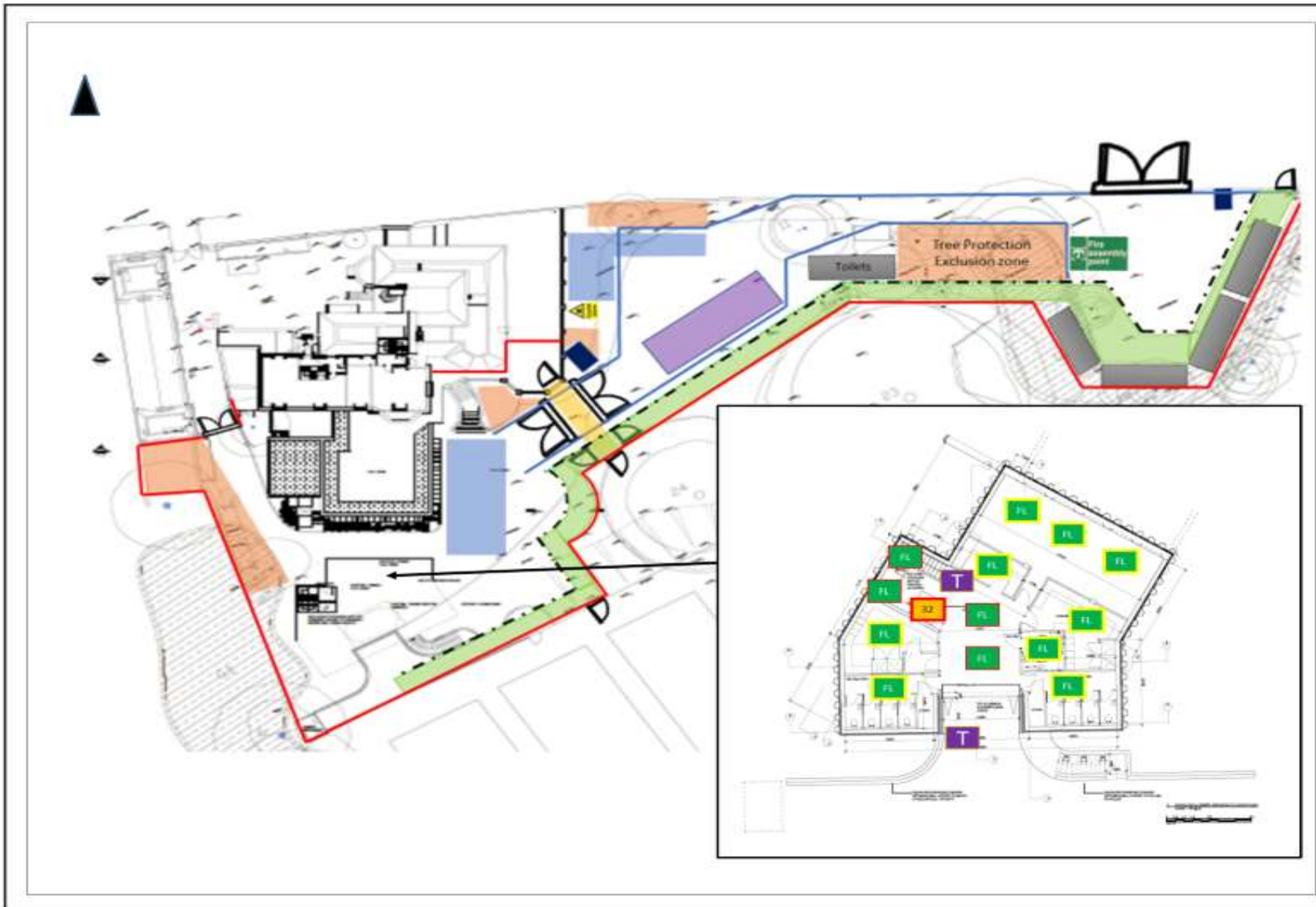
- Notes:**
- H** 110v Hoarding lights to be installed for school
 - S** Switch for Hoarding lights on school Chain link fencing – located on key-clamp Hand rail

- All exterior site lights to be powered by photo-cell.
- JWK to relocate drainage for new toilet block 12-10-18
- Hensall to relocate power and water supply for toilet block – disconnect existing toilet block on 12-10-18
- Hensall to trim and alter ductwork to allow units to be placed closer to the sports hall.

Project Title: Channing Junior School
 Drawing Title: Site Temporary Electrical Plan
 Client: Channing Junior School
 Scale: NTS
 Date: 04-10-2018
 Dwg No: 001



Curo Construction Ltd
 Suite 6, Sandhurst House,
 297 Yorktown Road, Sandhurst,
 Berkshire, GU47 0QA
www.curoconstruction.com



- Key:**
- Hoarding
 - Site Accommodation & Welfare
 - MOU Location
 - 25 KVA Transformer
 - 110v Hoarding Light
 - 110v Wall Mounted Floodlight
 - Water Tap
 - T2A-RCD Supply
 - Fluorescent Light
 - Fluorescent Emergency Light
 - ADM Monitor 110v supply
→ constantly powered.

Notes:

Project Title:
Channing Junior School
Drawing Title:
Site Temporary Electrical plan
Client:
Channing Junior School
Scale:
N/T/S
Date:
04-10-2018
Dwg No:
002



Curo Construction Ltd
Suite 6, Sandhurst House,
297 Yorktown Road, Sandhurst,
Berkshire, GU47 0QA
www.curoconstruction.com