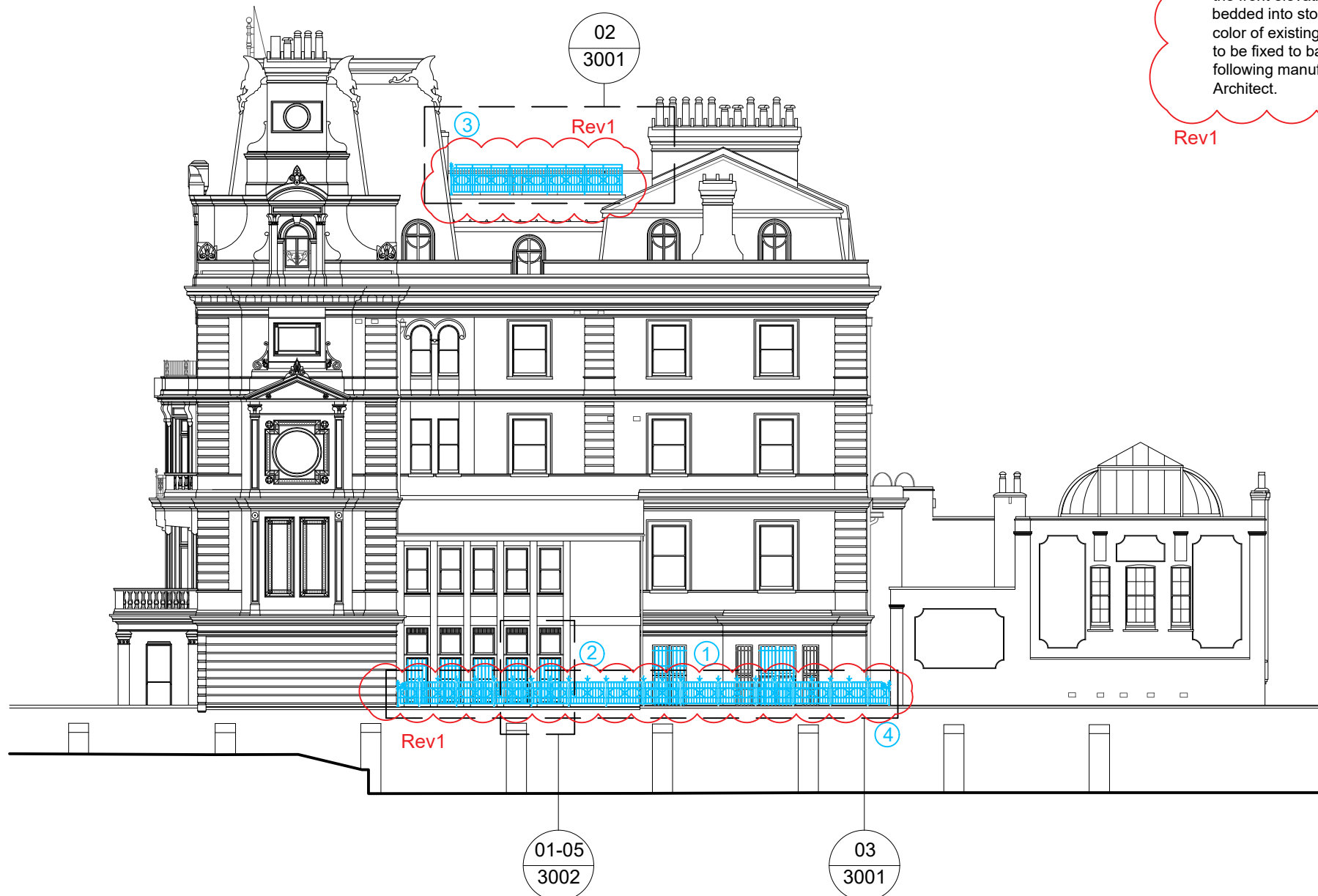


00 Key Plan
2201 1:500



01 Front Elevation as Proposed
2201 1:200

Purpose of Issue:
FOR_PLANNING

NOTES:

Proposed Alterations

- Drawing to be printed in colour. Drawing not for construction purposes.

1. New black painted cast iron window bars set within window architrave and traditionally bedded into stone cill. Casement windows to be re-hung for inwards opening.
2. New black painted cast iron window bars to all five bays set within window architrave and traditionally bedded into stone cill.
3. New metal railings to prevent access from adjacent roofs. Design adapted from existing railings on the front elevation of Cambridge Gate; gaps reduced to 100mm max. to comply with current Building Regulations, minimum height of screen 1100 mm. Back supports to main standards to be fixed to back of screen. Design to be confirmed following manufacturer's shop drawings, for comments by Architect.
4. Proposed black painted cast iron railings to run on top of boundary wall. Design adapted from existing railings on the front elevation of Cambridge Gate. Traditionally bedded into stone coping with resin bond, color to match color of existing stone. Back supports to main standards to be fixed to back of wall. Design to be confirmed following manufacturer's shop drawings, for comments by Architect.

Rev1

Notes

1. Any dwg format drawing is to be read in conjunction with and at the scale of the accompanying pdf.
2. Where colours other than black or grey are used, the drawing must be plotted in colour.
3. For status 'C' (Construction) drawings all dimensions are to be checked on site by the contractor, scaling is for Local Authority purposes only.
4. Unless otherwise indicated, all dimensions are in millimeters.
5. All information on this drawing is to be read in conjunction with the relevant Donald Insall Associates specification and trade contractors' drawings and information by specialists.
6. In the event of any discrepancy, please contact us immediately.
7. This drawing may contain survey information by others and is to be used solely for the purposes for which it was issued.
8. These are uncontrolled documents issued for information purposes only. If you have any queries regarding the drawings, please contact DIA immediately.
9. Please note DIA cannot be held responsible for any errors arising from changes made to an uncontrolled dwg file.

© 2017 DONALD INSALL ASSOCIATES LTD

Drawing Status		
F Feasibility	B Building Control	T Tender
S Sketch Design	D Design Development	C Construction
P Planning	M Measurement	R Record

Rev	Date	Dwn	Auth	Revision
1	19-11-19	MXV	RMD	Railing design updated following comments
0	25-03-19	MXV	RMD	Initial Issue

1 Cambridge Gate
London, NW1

Side Elevation
As Proposed

Project	CAMG1	No	2201
Scale (A3)	1:200	Status	P
		Revision	1

Donald Insall Associates
Chartered Architects and Historic Building Consultants

12 Devonshire Street, London W1G 7AB
(+44) 020 7245 8888
london@insall-architects.co.uk

