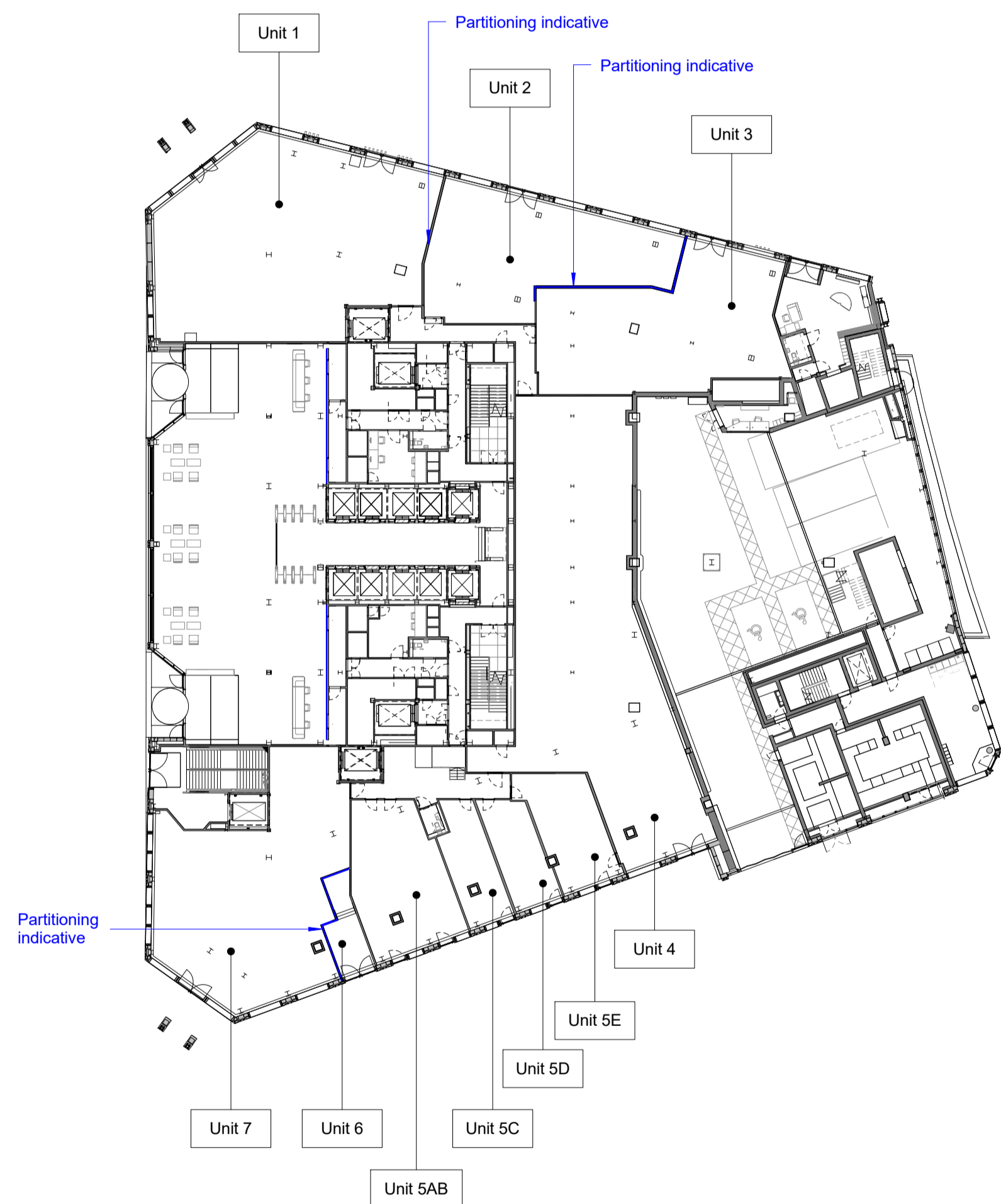
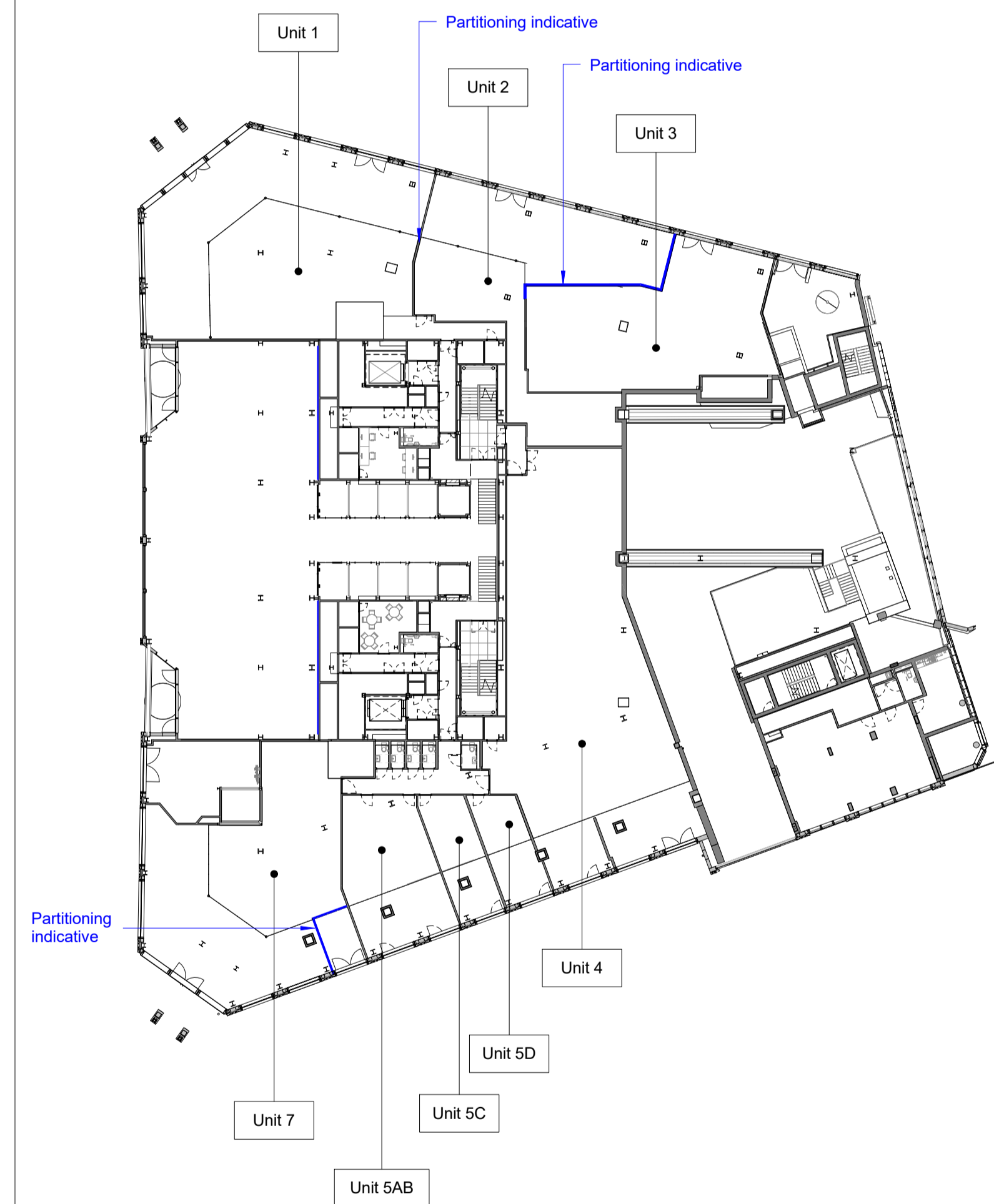




1 Level B1 - Retail Areas 1 : 400



2 Level 00 - Retail Areas 1 : 400

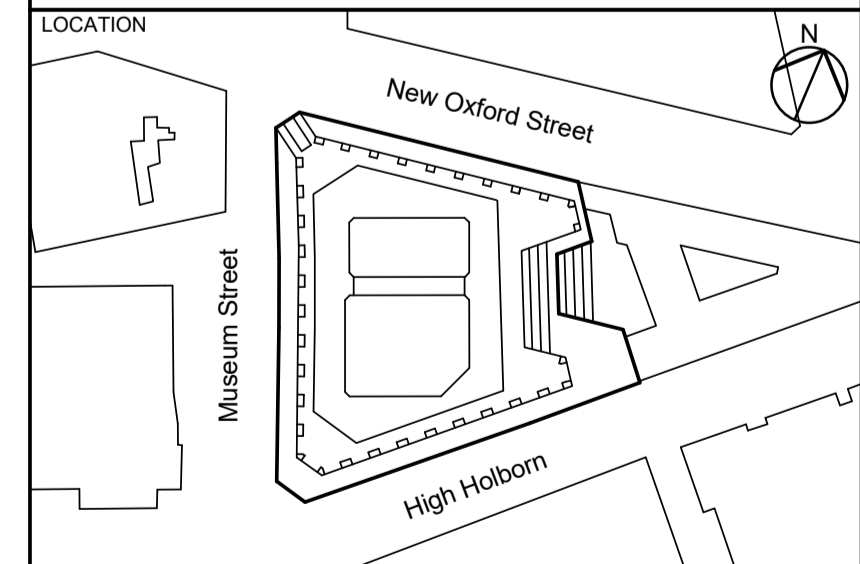


3 Level 00M - Retail Areas 1 : 400

REV	DATE	DESCRIPTION
P01	010519	Planning Condition 8
P02	270919	Planning Condition 8
P03	061119	Planning Condition 8

CONSULTANTS	
CLIENT:	21-31 New Oxford Street Development Ltd.
CONTRACTOR:	Laing O'Rourke
PROJECT MANAGER:	Gardiner & Theobald
STRUCTURAL ENGINEER:	Anup Structures
MECHANICAL ENGINEER:	Anup M&E
ACOUSTIC CONSULTANT:	Anup Acoustics
CLADDING CONSULTANT:	Anup Facades
COST CONSULTANT:	Arcadis

- NOTE
1. Do not scale from this drawing.
 2. All dimensions to be checked on site by the contractor and such dimensions to be his responsibility. Report all drawing errors, omissions and discrepancies to the architect.
 3. This document may be issued in an uncontrolled CAD format to enable others to use it as background information to make alterations and/or additions. In that instance the file will be accompanied by a PDF version. It is for those making such alterations and additions to ensure that they make use of current background information.
 4. AHMM Ltd accepts no liability for any such alterations or additions to the background information or arising out of changes to background information which occur prior to alterations of additions being made.
 5. Landscape shown is indicative only. Please refer to Landscape Consultant's report for details.



ALLFORD HALL MONAGHAN MORRIS
 ARCHITECTS Ltd
 MORELANDS, 5-23 OLD STREET LONDON EC1V 9HL
 TEL 020 7251 5261 FAX 020 7251 5123 WEB WWW.AHMM.CO.UK

job title
The Post Building
 drawing title / location
Retail Layout Plans

drawn by	checked	scale	status
FB	MM	1 : 400 @ A1	PLANNING
project	drawing no.	revision	
12141	PL_(00)_506	P03	